

## 14-Bit, Serial Input Multiplying Digital-to-Analog Converter

## FEATURES

- **14-Bit Monotonic**
- **$\pm 1$  LSB INL**
- **$\pm 0.5$  LSB DNL**
- **Low Noise:  $12 \text{ nV}/\sqrt{\text{Hz}}$**
- **Low Power:  $I_{DD} = 2 \text{ } \mu\text{A}$**
- **+2.7 V to +5.5 V Analog Power Supply**
- **2 mA Full-Scale Current  $\pm 20\%$   
with  $V_{REF} = 10 \text{ V}$**
- **0.5  $\mu\text{s}$  Settling Time**
- **4-Quadrant Multiplying Reference-Input**
- **Reference Bandwidth: 10 MHz**
- **$\pm 10 \text{ V}$  Reference Input**
- **Reference Dynamics: -105 THD**
- **3-Wire 50-MHz Serial Interface**
- **Tiny 8-Lead 3 x 3 mm SON and 3 x 5 mm MSOP Packages**
- **Industry-Standard Pin Configuration**

## APPLICATIONS

- **Automatic Test Equipment**
- **Instrumentation**
- **Digitally Controlled Calibration**
- **Industrial Control PLCs**

## DESCRIPTION

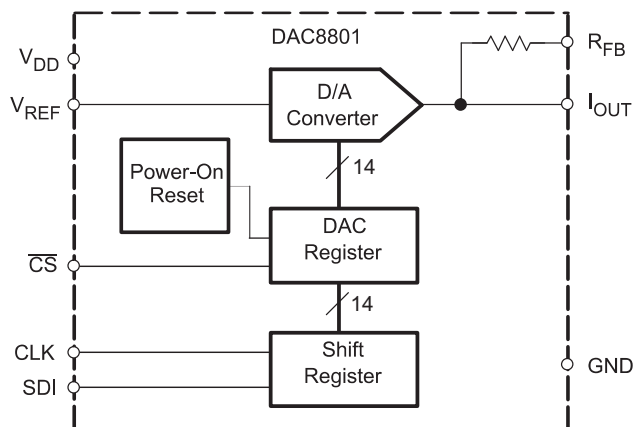
The DAC8801 multiplying digital-to-analog converter is designed to operate from a single 2.7-V to 5.5-V supply.

The applied external reference input voltage  $V_{REF}$  determines the full-scale output current. An internal feedback resistor ( $R_{FB}$ ) provides temperature tracking for the full-scale output when combined with an external I-to-V precision amplifier.

A serial-data interface offers high-speed, three-wire microcontroller compatible inputs using data-in (SDI), clock (CLK), and chip select ( $\overline{\text{CS}}$ ).

On power-up, the DAC register is filled with zeroes, and the DAC output is at zero scale.

The DAC8801 is packaged in space-saving 8-lead SON and MSOP packages.



Please be aware that an important notice concerning availability, standard warranty, and use in critical applications of Texas Instruments semiconductor products and disclaimers thereto appears at the end of this data sheet.

PRODUCTION DATA information is current as of publication date. Products conform to specifications per the terms of the Texas Instruments standard warranty. Production processing does not necessarily include testing of all parameters.

Copyright © 2004–2007, Texas Instruments Incorporated



This integrated circuit can be damaged by ESD. Texas Instruments recommends that all integrated circuits be handled with appropriate precautions. Failure to observe proper handling and installation procedures can cause damage.

ESD damage can range from subtle performance degradation to complete device failure. Precision integrated circuits may be more susceptible to damage because very small parametric changes could cause the device not to meet its published specifications.

### PACKAGE/ORDERING INFORMATION <sup>(1)</sup>

| PRODUCT | MINIMUM<br>RELATIVE<br>ACCURACY<br>(LSB) | DIFFERENTIAL<br>NONLINEARITY<br>(LSB) | PACKAGE-<br>LEAD | PACKAGE<br>DESIGNATOR | SPECIFIED<br>TEMPERATURE<br>RANGE | PACKAGE<br>MARKING | ORDERING<br>NUMBER | TRANSPORT<br>MEDIA,<br>QUANTITY |
|---------|--|---------------------------------------|------------------|-----------------------|-----------------------------------|--------------------|--------------------|---------------------------------|
| DAC8801 | ±1                                       | ±0.5                                  | MSOP-8           | DGK                   | -40°C to 85°C                     | F01                | DAC8801IDGKT       | Tape and Reel,<br>250           |
| DAC8801 | ±1                                       | ±0.5                                  | MSOP-8           | DGK                   | -40°C to 85°C                     | F01                | DAC8801IDGKR       | Tape and Reel,<br>2500          |
| DAC8801 | ±1                                       | ±0.5                                  | SON-8            | DRB                   | -40°C to 85°C                     | E01                | DAC8801IDRBT       | Tape and Reel,<br>250           |
| DAC8801 | ±1                                       | ±0.5                                  | SON-8            | DRB                   | -40°C to 85°C                     | E01                | DAC8801IDRBR       | Tape and Reel,<br>2500          |

(1) For the most current package and ordering information, see the Package Option Addendum at the end of this data sheet, or refer to our web site at [www.ti.com](http://www.ti.com).

### ABSOLUTE MAXIMUM RATINGS <sup>(1)</sup>

over operating free-air temperature range (unless otherwise noted)

|   |                   | DAC8801                                   | UNITS |
|---|-------------------|---|-------|
| $V_{DD}$ to GND                         |                   | -0.3 to 7                                 | V     |
| Digital Input voltage to GND            |                   | -0.3 to $V_{DD} + 0.3$                    | V     |
| $V_{OUT}$ to GND                        |                   | -0.3 to $V_{DD} + 0.3$                    | V     |
| Operating temperature range             |                   | -40 to 105                                | °C    |
| $V_{REF}$ , $R_{FB}$ to GND             |                   | -25 to 25                                 | V     |
| Storage temperature range               |                   | -65 to 150                                | °C    |
| Junction temperature range ( $T_J$ max) |                   | 125                                       | °C    |
| Power dissipation                       |                   | $(T_J \text{ max} - T_A) / R_{\theta JA}$ | W     |
| Thermal impedance, $R_{\theta JA}$      |                   | 55  | °C/W  |
| Lead temperature, soldering             | Vapor phase (60s) | 215                                       | °C    |
| Lead temperature, soldering             | Infrared (15s)    | 220                                       | °C    |
| ESD rating, HBM                         |                   | 4000                                      | V     |
| ESD rating, CDM                         |                   | 1000                                      | V     |

(1) Stresses above those listed under Absolute Maximum Ratings may cause permanent damage to the device. Exposure to absolute maximum conditions for extended periods may affect device reliability.

## ELECTRICAL CHARACTERISTICS

$V_{DD} = 2.7\text{ V to }5.5\text{ V}$ ;  $I_{OUT} = \text{Virtual GND}$ ,  $GND = 0\text{ V}$ ;  $V_{REF} = 10\text{ V}$ ;  $T_A = \text{Full Operating Temperature}$ ; all specifications  $-40^\circ\text{C}$  to  $85^\circ\text{C}$  unless otherwise noted.

| PARAMETER                              |  | CONDITIONS  | DAC8801 |     |               | UNITS |
|--|--|---|---------|-----|---------------|-------|
|  |  |   | MIN     | TYP | MAX           |       |
| STATIC PERFORMANCE                     |  |   |         |     |               |       |
| Resolution                             |  |   | 14      |     | Bits          |       |
| Relative accuracy                      |  |   | ±1      |     | LSB           |       |
| Differential nonlinearity              |  |   | ±0.5    |     | LSB           |       |
| Output leakage current                 |  | Data = 0000h, T <sub>A</sub> = 25°C                             | 10      |     | nA            |       |
| Output leakage current                 |  | Data = 0000h, T <sub>A</sub> = T <sub>MAX</sub>                 | 10      |     | nA            |       |
| Full-scale gain error                  |  | All ones loaded to DAC register                                 | ±1      | ±4  | mV            |       |
| Full-scale tempco                      |  |   | ±3      |     | ppm of FSR/°C |       |
| OUTPUT CHARACTERISTICS <sup>(1)</sup>  |  |   |         |     |               |       |
| Output current                         |  |   | 2       |     | mA            |       |
| Output capacitance                     |  | Code dependent  | 50      |     | pF            |       |
| REFERENCE INPUT <sup>(1)</sup>         |  |   |         |     |               |       |
| V <sub>REF</sub> Range                 |  |   | −15     | 15  | V             |       |
| Input resistance                       |  |   | 5       |     | kΩ            |       |
| Input capacitance                      |  |   | 5       |     | pF            |       |
| LOGIC INPUTS AND OUTPUT <sup>(1)</sup> |  |   |         |     |               |       |
| V <sub>IL</sub>                        | Input low voltage                          | V <sub>DD</sub> = 2.7V  | 0.6     |     | V             |       |
|  |  | V <sub>DD</sub> = 5V  | 0.8     |     | V             |       |
| V <sub>IH</sub>                        | Input high voltage                         | V <sub>DD</sub> = 2.7V  | 2.1     |     | V             |       |
|  |  | V <sub>DD</sub> = 5V  | 2.4     |     | V             |       |
| I <sub>IL</sub>                        | Input leakage current                      |   | 10      |     | μA            |       |
| C <sub>IL</sub>                        | Input capacitance                          |   | 10      |     | pF            |       |
| INTERFACE TIMING                       |  |   |         |     |               |       |
| f <sub>CLK</sub>                       | Clock input frequency                      |   | 50      |     | MHz           |       |
| t <sub>(CH)</sub>                      | Clock pulse width high                     |   | 10      |     | ns            |       |
| t <sub>(CL)</sub>                      | Clock pulse width low                      |   | 10      |     | ns            |       |
| t <sub>(CSS)</sub>                     | $\overline{\text{CS}}$ to Clock setup time |   | 0       |     | ns            |       |
| t <sub>(CSH)</sub>                     | Clock to $\overline{\text{CS}}$ hold time  |   | 10      |     | ns            |       |
| t <sub>(DS)</sub>                      | Data setup time                            |   | 5       |     | ns            |       |
| t <sub>(DH)</sub>                      | Data hold time                             |   | 10      |     | ns            |       |
| POWER REQUIREMENTS                     |  |   |         |     |               |       |
| V <sub>DD</sub>                        |  |   | 2.7     | 5.5 | V             |       |
| I <sub>DD</sub> (normal operation)     |  | Logic inputs = 0 V  | 5       |     | μA            |       |
| V <sub>DD</sub> = 4.5 V to 5.5 V       |  | V <sub>IH</sub> = V <sub>DD</sub> and V <sub>IL</sub> = GND     | 3       | 5   | μA            |       |
| V <sub>DD</sub> = 2.7 V to 3.6 V       |  | V <sub>IH</sub> = V <sub>DD</sub> and V <sub>IL</sub> = GND     | 1       | 2.5 | μA            |       |
| AC CHARACTERISTICS <sup>(1)(2)</sup>   |  |   |         |     |               |       |
| t <sub>s</sub>                         | Output voltage settling time               | To ±0.1% of full-scale, Data = 0000h to 3FFFh to 0000h          | 0.3     |     | μs            |       |
|  |  | To ±0.006% of full-scale, Data = 0000h to 3FFFh to 0000h        | 0.5     |     |               |       |
| Reference multiplying BW               |  | V <sub>REF</sub> = 5 V <sub>PP</sub> , Data = 3FFFh             | 10      |     | MHz           |       |
| DAC glitch impulse                     |  | V <sub>REF</sub> = 0 V, Data = 3FFFh to 2000h                   | 2       |     | nV/s          |       |
| Feedthrough error                      |  | V <sub>REF</sub> = 100 mV <sub>RMS</sub> , 100kHz, Data = 0000h | −70     |     | dB            |       |
| Digital feedthrough                    |  | $\overline{\text{CS}}$ = 1 and f <sub>CLK</sub> = 1MHz          | 2       |     | nV/s          |       |

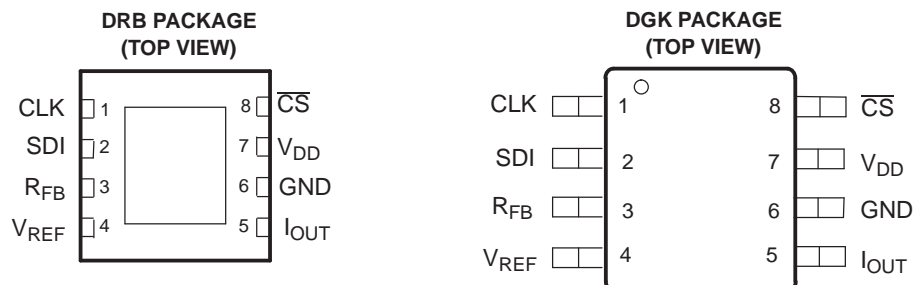
(1) Specified by design and characterization, not production tested.

(2) All ac characteristic tests are performed in a closed-loop system using the THS4011 I-to-V converter amplifier.

**ELECTRICAL CHARACTERISTICS (continued)**

$V_{DD} = 2.7\text{ V to }5.5\text{ V}$ ;  $I_{OUT} = \text{Virtual GND}$ ,  $\text{GND} = 0\text{ V}$ ;  $V_{REF} = 10\text{ V}$ ;  $T_A = \text{Full Operating Temperature}$ ; all specifications  $-40^\circ\text{C}$  to  $85^\circ\text{C}$  unless otherwise noted.

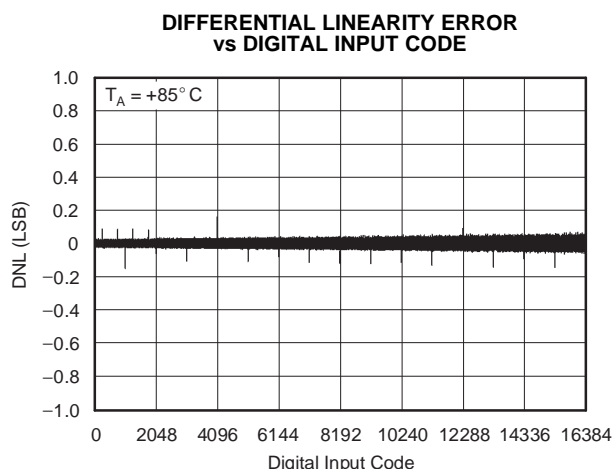
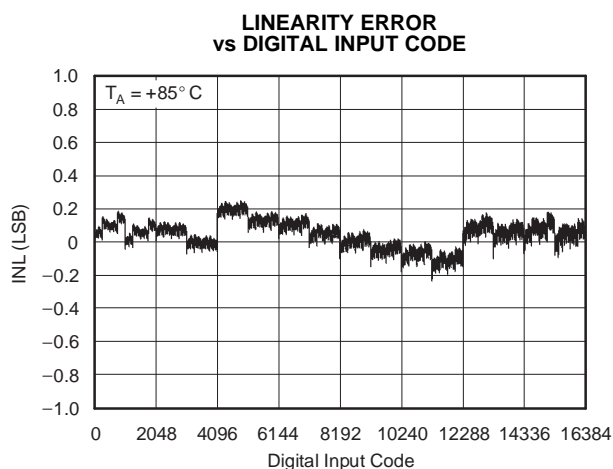
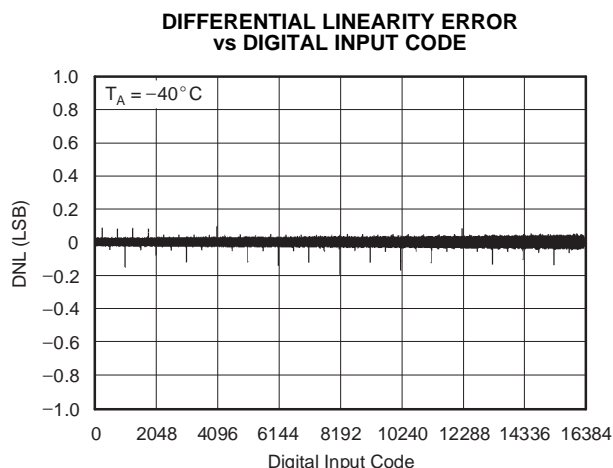
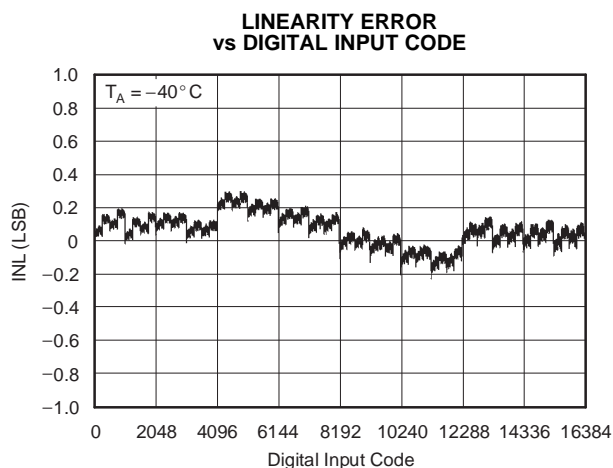
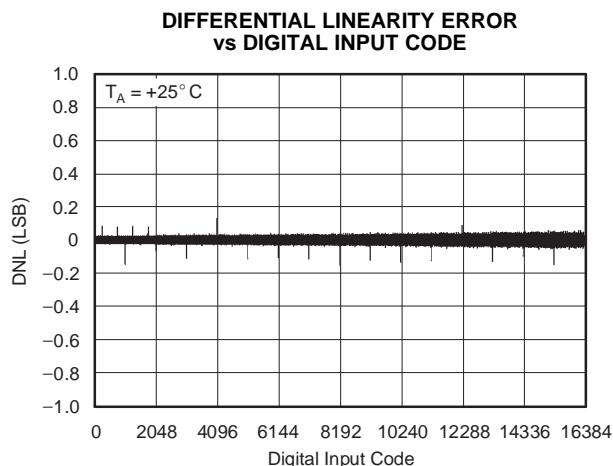
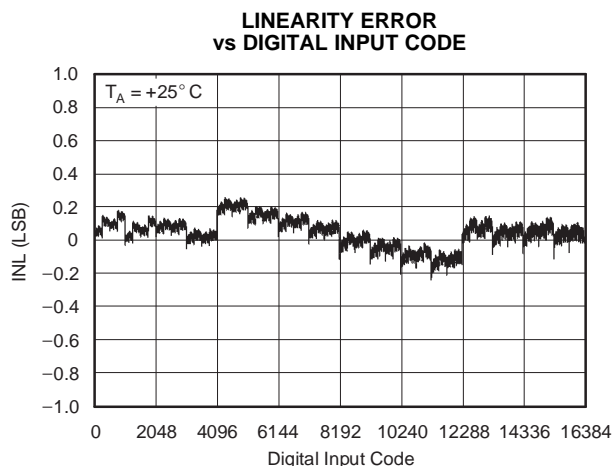
| PARAMETER                 | CONDITIONS   | DAC8801 |      |     | UNITS                  |
|---------------------------|--|---------|------|-----|------------------------|
|                           |  | MIN     | TYP  | MAX |                        |
| Total harmonic distortion | $V_{REF} = 5\text{ V}_{PP}$ , Data = 3FFFh, $f = 1\text{ kHz}$ |         | –105 |     | dB                     |
| Output spot noise voltage | $f = 1\text{ kHz}$ , BW = 1 Hz                                 |         | 12   |     | nV/ $\sqrt{\text{Hz}}$ |

**PIN ASSIGNMENTS****TERMINAL FUNCTIONS**

| PIN | NAME                   | DESCRIPTION   |
|-----|------------------------|---|
| 1   | CLK                    | Clock input, positive edge triggered clocks data into shift register  |
| 2   | SDI                    | Serial register input, data loads directly into the shift register MSB first. Extra leading bits are ignored.                                   |
| 3   | $R_{FB}$               | Internal matching feedback resistor. Connect to external op amp output.   |
| 4   | $V_{REF}$              | DAC reference input pin. Establishes DAC full-scale voltage. Constant input resistance versus code.   |
| 5   | $I_{OUT}$              | DAC current output. Connects to inverting terminal of external precision I to V op amp.   |
| 6   | GND                    | Analog and digital ground   |
| 7   | $V_{DD}$               | Positive power supply input. Specified range of operation 2.7 V to 5.5 V.   |
| 8   | $\overline{\text{CS}}$ | Chip select, active low digital input. Transfers shift register data to DAC register on rising edge. See <a href="#">Table 1</a> for operation. |

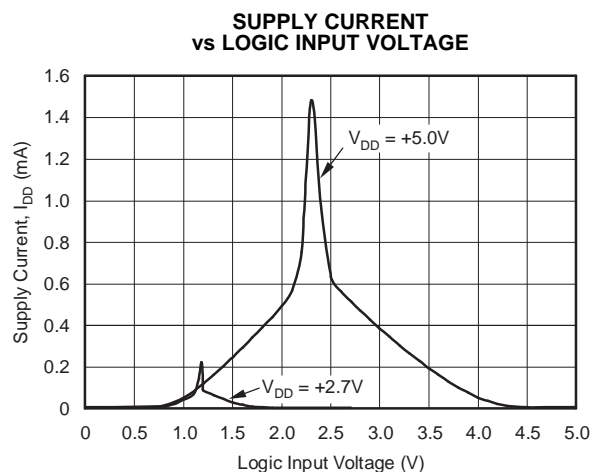
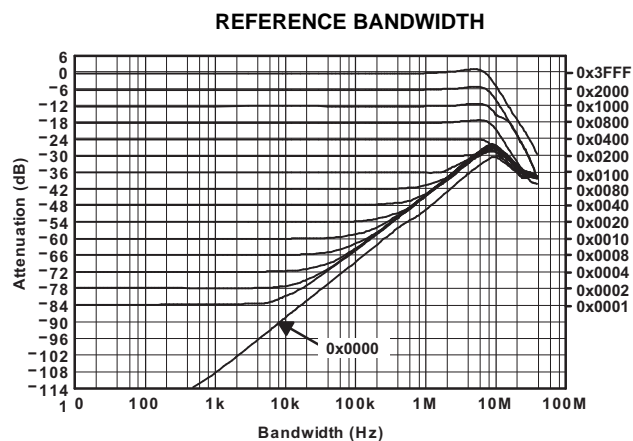
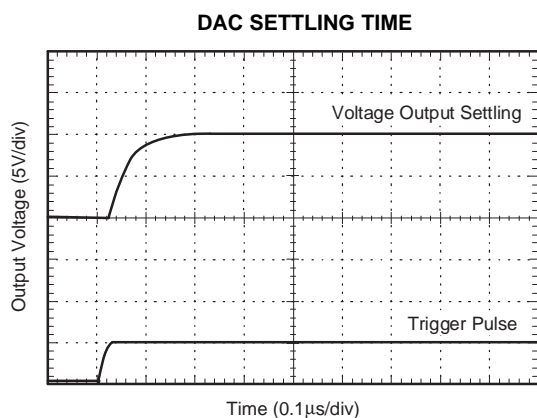
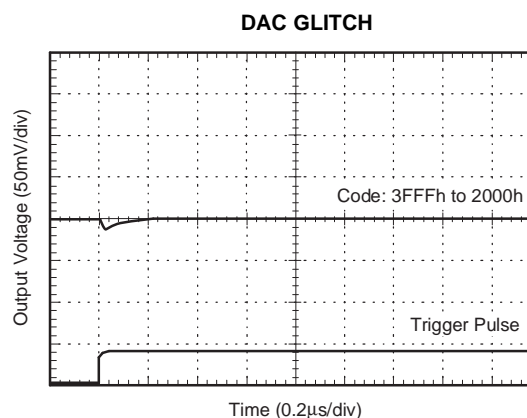
## TYPICAL CHARACTERISTICS: $V_{DD} = 5\text{ V}$

At  $T_A = 25^\circ\text{C}$ ,  $+V_{DD} = 5\text{ V}$ , unless otherwise noted.



**TYPICAL CHARACTERISTICS:  $V_{DD} = 5\text{ V}$  (continued)**

At  $T_A = 25^\circ\text{C}$ ,  $+V_{DD} = 5\text{ V}$ , unless otherwise noted.

**Figure 7.****Figure 8.****Figure 9.****Figure 10.**

# **TYPICAL CHARACTERISTICS: $V_{DD} = 2.7\text{ V}$**

At  $T_A = 25^\circ\text{C}$ ,  $+V_{DD} = 2.7\text{ V}$ , unless otherwise noted.

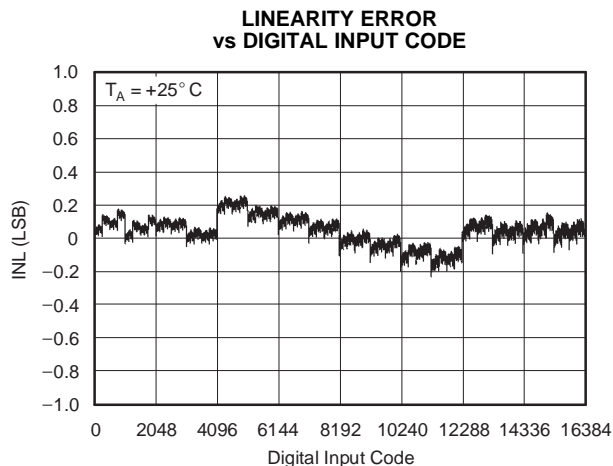


Figure 11.

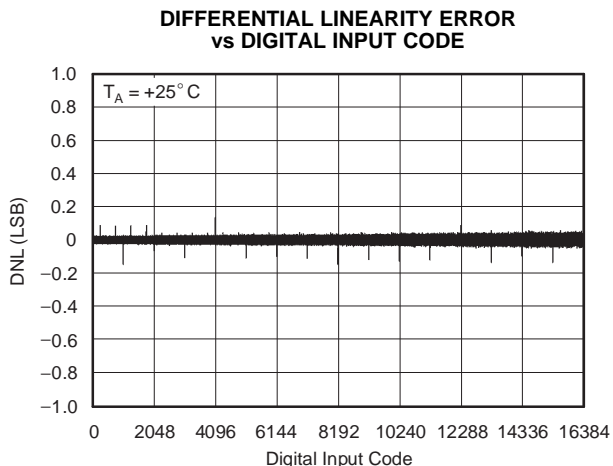


Figure 12.

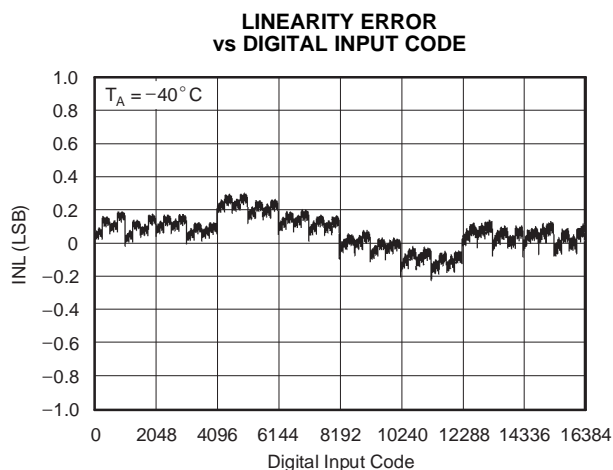


Figure 13.

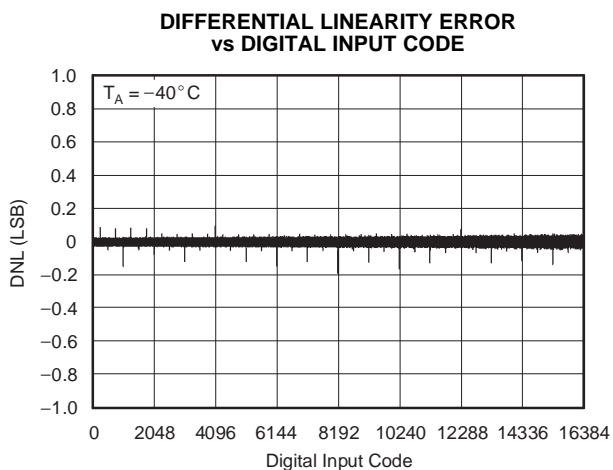


Figure 14.

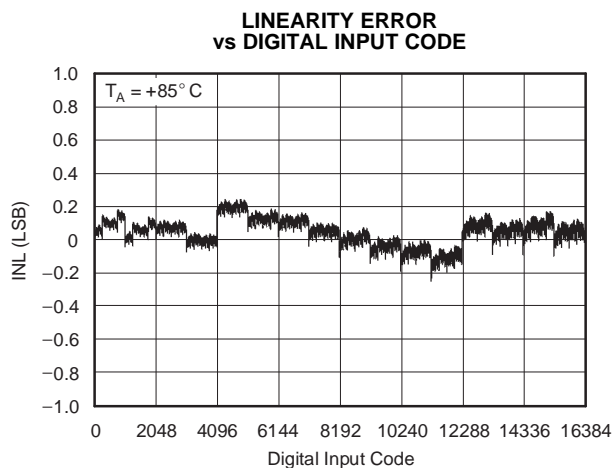


Figure 15.

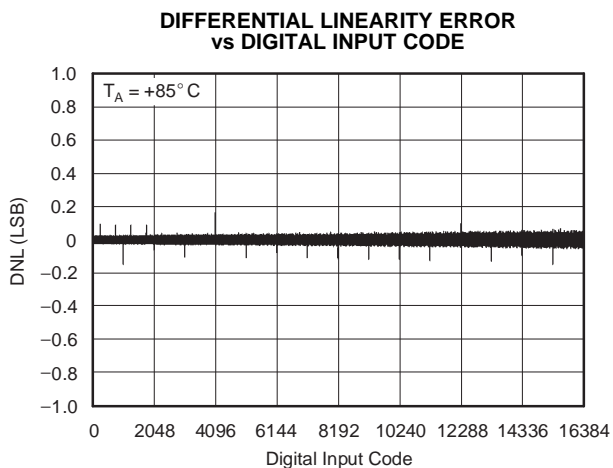


Figure 16.

## THEORY OF OPERATION

The DAC8801 is a single channel current output, 16-bit digital-to-analog converter (DAC). The architecture, illustrated in Figure 17, is an R-2R ladder configuration with the three MSBs segmented. Each 2R leg of the ladder is either switched to GND or the  $I_{OUT}$  terminal. The  $I_{OUT}$  terminal of the DAC is held at a virtual GND potential by the use of an external I/V converter op amp. The R-2R ladder is connected to an external reference input  $V_{REF}$  that determines the DAC full-scale current. The R-2R ladder presents a code independent load impedance to the external reference of  $5\text{ k}\Omega \pm 25\%$ . The external reference voltage can vary in a range of -10 V to 10 V, thus providing bipolar  $I_{OUT}$  current operation. By using an external I/V converter and the DAC8801  $R_{FB}$  resistor, output voltage ranges of  $-V_{REF}$  to  $V_{REF}$  can be generated.

When using an external I/V converter and the DAC8801  $R_{FB}$  resistor, the DAC output voltage is given by Equation 1:

$$V_{OUT} = -V_{REF} \times \frac{\text{CODE}}{16384} \quad (1)$$

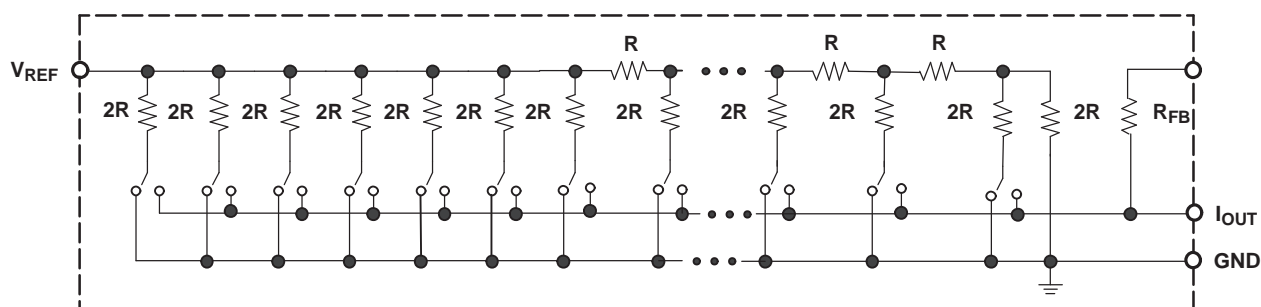


Figure 17. Equivalent R-2R DAC Circuit

Each DAC code determines the 2R leg switch position to either GND or  $I_{OUT}$ . Because the DAC output impedance as seen looking into the  $I_{OUT}$  terminal changes versus code, the external I/V converter noise gain will also change. Because of this, the external I/V converter op amp must have a sufficiently low offset voltage such that the amplifier offset is not modulated by the DAC  $I_{OUT}$  terminal impedance change. External op amps with large offset voltages can produce INL errors in the transfer function of the DAC8801 due to offset modulation versus DAC code. For best linearity performance of the DAC8801, an op amp (OPA277) as shown in Figure 18 is recommended. This circuit allows  $V_{REF}$  to swing from -10V to +10V.

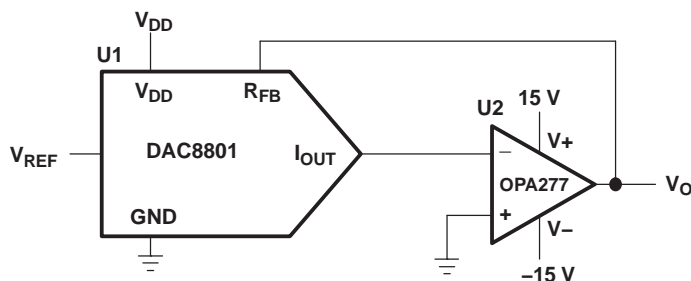


Figure 18. Voltage Output Configuration



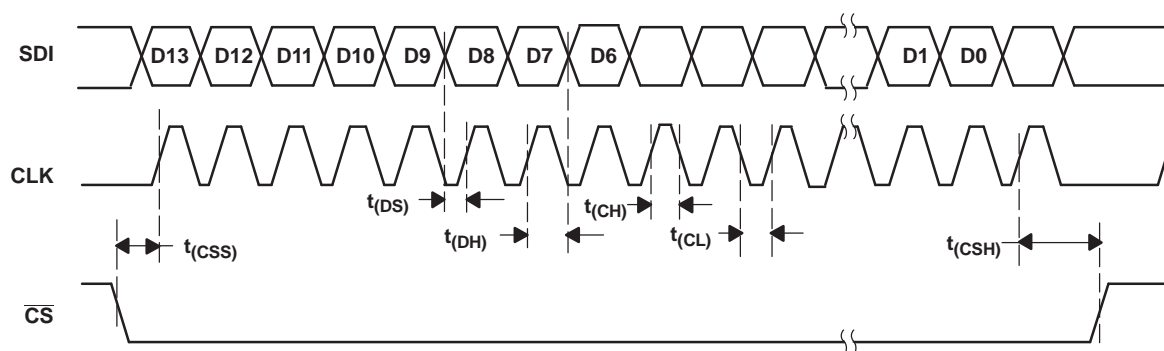


Figure 19. DAC8801 Timing Diagram

Table 1. Control Logic Truth Table<sup>(1)</sup>

| CLK         | $\overline{CS}$ | Serial Shift Register                           | DAC Register                         |
|-------------|-----------------|---|--------------------------------------|
| X           | H               | No effect                                       | Latched                              |
| $\uparrow+$ | L               | Shift register data advanced one bit            | Latched                              |
| X           | H               | No effect                                       | Latched                              |
| X           | $\uparrow+$     | Shift register data transferred to DAC register | New data loaded from serial register |

(1)  $\uparrow+$  Positive logic transition; X = Don't care

Table 1. Serial Input Register Data Format, Data Loaded MSB First

| Bit                 | B13 (MSB) | B12 | B11 | B10 | B9 | B8 | B7 | B6 | B5 | B4 | B3 | B2 | B1 | B0 (LSB) |
|---------------------|-----------|-----|-----|-----|----|----|----|----|----|----|----|----|----|----------|
| Data <sup>(1)</sup> | D13       | D12 | D11 | D10 | D9 | D8 | D7 | D6 | D5 | D4 | D3 | D2 | D1 | D0       |

(1) A full 16-bit data word can be loaded into the serial register, but only the last 14 bits are transferred to the DAC register when  $\overline{CS}$  goes high.

## APPLICATION INFORMATION

### Stability Circuit

For a current-to-voltage design as shown in [Figure 20](#), the DAC8801 current output ( $I_{OUT}$ ) and the connection with the inverting node of the op amp should be as short as possible and according to correct PCB layout design. For each code change there is a step function. If the GBP of the op amp is limited and parasitic capacitance is excessive at the inverting node then gain peaking is possible. Therefore, for circuit stability, a compensation capacitor C1 (4 pF to 20 pF typ) can be added to the design as shown in [Figure 20](#).

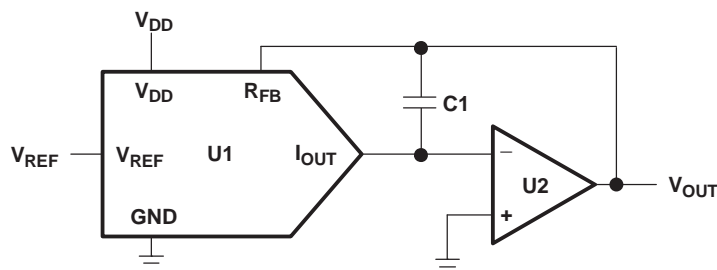


Figure 20. Gain Peaking Prevention Circuit With Compensation Capacitor

### Positive Voltage Output Circuit

As shown in [Figure 21](#), in order to generate a positive voltage output, a negative reference is input to the DAC8801. This design is suggested instead of using an inverting amp to invert the output due to tolerance errors of the resistor. For a negative reference,  $V_{OUT}$  and GND of the reference are level-shifted to a virtual ground and a -2.5 V input to the DAC8801 with an op amp.

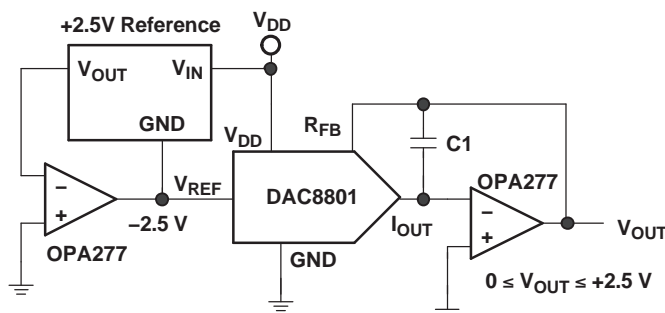


Figure 21. Positive Voltage Output Circuit

## APPLICATION INFORMATION (continued)

### Bipolar Output Circuit

The DAC8801, as a 2-quadrant multiplying DAC, can be used to generate a unipolar output. The polarity of the full-scale output  $I_{OUT}$  is the inverse of the input reference voltage at  $V_{REF}$ .

Some applications require full 4-quadrant multiplying capabilities or bipolar output swing. As shown in Figure 22, external op amp U4 is added as a summing amp and has a gain of 2X that widens the output span to 5 V. A 4-quadrant multiplying circuit is implemented by using a 2.5-V offset of the reference voltage to bias U4. According to the circuit transfer equation given in Equation 2, input data (D) from code 0 to full scale produces output voltages of  $V_{OUT} = -2.5\text{ V}$  to  $V_{OUT} = 2.5\text{ V}$ .

$$V_{OUT} = \left( \frac{D}{16,384} - 1 \right) \times V_{REF} \quad (2)$$

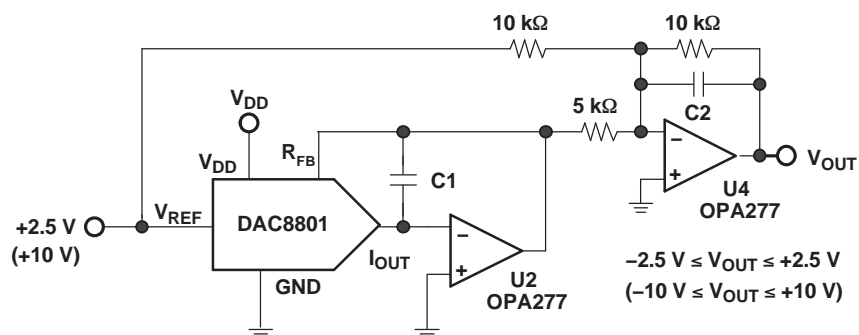


Figure 22. Bipolar Output Circuit

### Programmable Current Source Circuit

A DAC8801 can be integrated into the circuit in Figure 23 to implement an improved Howland current pump for precise voltage to current conversions. Bidirectional current flow and high voltage compliance are two features of the circuit. A application of this circuit includes a 4-mA to 20-mA current transmitter with up to a 500-Ω load. With a matched resistor network, the load current of the circuit is shown in Equation 3:

$$I_L = \frac{(R2 + R3) / R1}{R3} \times V_{REF} \times D \quad (3)$$

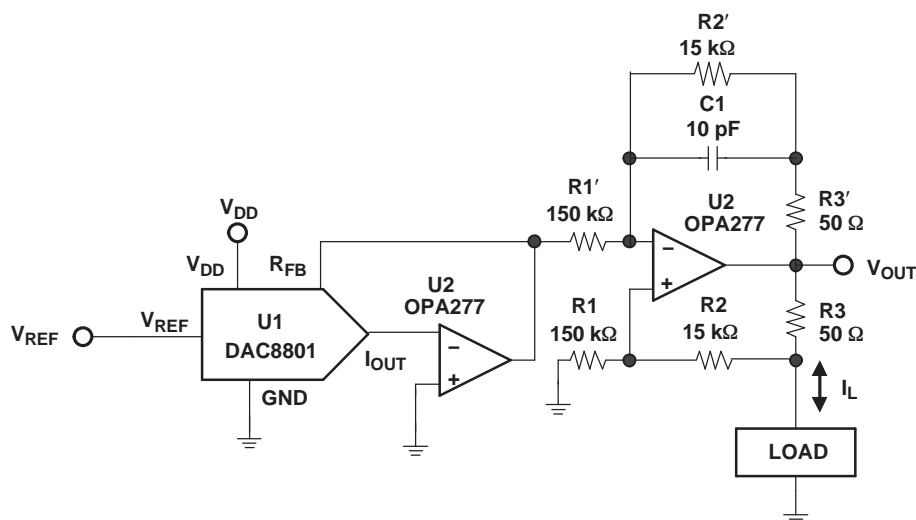


Figure 23. Programmable Bidirectional Current Source Circuit

**APPLICATION INFORMATION (continued)**

The value of R3 in the previous equation can be reduced to increase the output current drive of U3. U3 can drive  $\pm 20$  mA in both directions with voltage compliance limited up to 15 V by the U3 voltage supply. Elimination of the circuit compensation capacitor C1 in the circuit is not suggested because of the change in the output impedance  $Z_O$ , according to [Equation 4](#):

$$Z_O = \frac{R1'R3(R1 + R2)}{R1(R2' + R3') - R1'(R2 + R3)} \quad (4)$$

As shown in [Equation 4](#), with matched resistors,  $Z_O$  is infinite and the circuit is optimum for use as a current source. However, if unmatched resistors are used,  $Z_O$  is positive or negative with negative output impedance being a potential cause of oscillation. Therefore, by incorporating C1 into the circuit, possible oscillation problems are eliminated. The value of C1 can be determined for critical applications; however, for most applications a value of several pF is suggested.

**Cross-Reference**

The DAC8801 has an industry-standard pinout. [Table 2](#) provides the cross-reference information.

**Table 2. Cross Reference**

| PRODUCT     | INL (LSB) | DNL (LSB) | SPECIFIED TEMPERATURE RANGE | PACKAGE DESCRIPTION  | PACKAGE OPTION | CROSS REFERENCE |
|-------------|-----------|-----------|-----------------------------|----------------------|----------------|-----------------|
| DAC8801IDGK | $\pm 1$   | $\pm 1$   | -40°C to +85°C              | 8-Lead MicroSOIC     | MSOP-8         | ADS5553CRM      |
| DAC8801IDRB | $\pm 1$   | $\pm 1$   | -40°C to +85°C              | 8-Lead Small Outline | SON-8          | N/A             |

**Table 3. DAC8801 Revision History**

| Revision | Date  | Description  |
|----------|-------|--|
| A        | 12/04 | Removed the "Product Preview" label.   |
|          |       | Added information to the Features.   |
|          |       | Added Output leakage current Data = 0000h, $T_A = T_{MAX}$ in the Electrical Characteristics table.                            |
|          |       | Added Input high voltage for 2.7 V and 5 V in the Electrical Characteristics table.  |
|          |       | Changed the values of the <i>Power Requirements</i> and the <i>AC characteristics</i> in the Electrical Characteristics table. |
| B        | 10/06 | Changed the ESD rating, HBM from 1500 to 4000 in the Absolute Maximum Ratings.   |
|          |       | Revised <a href="#">Figure 8</a> .   |

## PACKAGING INFORMATION

| Orderable Device | Status<br>(1) | Package Type | Package<br>Drawing | Pins | Package<br>Qty | Eco Plan<br>(2) | Lead finish/<br>Ball material<br>(6) | MSL Peak Temp<br>(3) | Op Temp (°C) | Device Marking<br>(4/5) | Samples                 |
|------------------|---------------|--------------|--------------------|------|----------------|-----------------|--------------------------------------|----------------------|--------------|-------------------------|-------------------------|
| DAC8801IDGKR     | ACTIVE        | VSSOP        | DGK                | 8    | 2500           | RoHS & Green    | NIPDAU   NIPDAUAG                    | Level-2-260C-1 YEAR  | -40 to 85    | F01                     | <a href="#">Samples</a> |
| DAC8801IDGKT     | ACTIVE        | VSSOP        | DGK                | 8    | 250            | RoHS & Green    | NIPDAU   NIPDAUAG                    | Level-2-260C-1 YEAR  | -40 to 85    | F01                     | <a href="#">Samples</a> |
| DAC8801IDGKTG4   | ACTIVE        | VSSOP        | DGK                | 8    | 250            | RoHS & Green    | NIPDAU                               | Level-2-260C-1 YEAR  | -40 to 85    | F01                     | <a href="#">Samples</a> |
| DAC8801IDRBT     | ACTIVE        | SON          | DRB                | 8    | 250            | RoHS & Green    | NIPDAU                               | Level-2-260C-1 YEAR  | -40 to 85    | E01                     | <a href="#">Samples</a> |

(1) The marketing status values are defined as follows:

**ACTIVE:** Product device recommended for new designs.

**LIFEBUY:** TI has announced that the device will be discontinued, and a lifetime-buy period is in effect.

**NRND:** Not recommended for new designs. Device is in production to support existing customers, but TI does not recommend using this part in a new design.

**PREVIEW:** Device has been announced but is not in production. Samples may or may not be available.

**OBSELETE:** TI has discontinued the production of the device.

(2) **RoHS:** TI defines "RoHS" to mean semiconductor products that are compliant with the current EU RoHS requirements for all 10 RoHS substances, including the requirement that RoHS substance do not exceed 0.1% by weight in homogeneous materials. Where designed to be soldered at high temperatures, "RoHS" products are suitable for use in specified lead-free processes. TI may reference these types of products as "Pb-Free".

**RoHS Exempt:** TI defines "RoHS Exempt" to mean products that contain lead but are compliant with EU RoHS pursuant to a specific EU RoHS exemption.

**Green:** TI defines "Green" to mean the content of Chlorine (Cl) and Bromine (Br) based flame retardants meet JS709B low halogen requirements of <=1000ppm threshold. Antimony trioxide based flame retardants must also meet the <=1000ppm threshold requirement.

(3) MSL, Peak Temp. - The Moisture Sensitivity Level rating according to the JEDEC industry standard classifications, and peak solder temperature.

(4) There may be additional marking, which relates to the logo, the lot trace code information, or the environmental category on the device.

(5) Multiple Device Markings will be inside parentheses. Only one Device Marking contained in parentheses and separated by a "~" will appear on a device. If a line is indented then it is a continuation of the previous line and the two combined represent the entire Device Marking for that device.

(6) Lead finish/Ball material - Orderable Devices may have multiple material finish options. Finish options are separated by a vertical ruled line. Lead finish/Ball material values may wrap to two lines if the finish value exceeds the maximum column width.

**Important Information and Disclaimer:** The information provided on this page represents TI's knowledge and belief as of the date that it is provided. TI bases its knowledge and belief on information provided by third parties, and makes no representation or warranty as to the accuracy of such information. Efforts are underway to better integrate information from third parties. TI has taken and

continues to take reasonable steps to provide representative and accurate information but may not have conducted destructive testing or chemical analysis on incoming materials and chemicals. TI and TI suppliers consider certain information to be proprietary, and thus CAS numbers and other limited information may not be available for release.

In no event shall TI's liability arising out of such information exceed the total purchase price of the TI part(s) at issue in this document sold by TI to Customer on an annual basis.

## TAPE AND REEL INFORMATION



\*All dimensions are nominal

| Device       | Package Type | Package Drawing | Pins | SPQ  | Reel Diameter (mm) | Reel Width W1 (mm) | A0 (mm) | B0 (mm) | K0 (mm) | P1 (mm) | W (mm) | Pin1 Quadrant |
|--------------|--------------|-----------------|------|------|--------------------|--------------------|---------|---------|---------|---------|--------|---------------|
| DAC8801IDGKR | VSSOP        | DGK             | 8    | 2500 | 330.0              | 12.4               | 5.3     | 3.4     | 1.4     | 8.0     | 12.0   | Q1            |

## TAPE AND REEL BOX DIMENSIONS



\*All dimensions are nominal

| Device       | Package Type | Package Drawing | Pins | SPQ  | Length (mm) | Width (mm) | Height (mm) |
|--------------|--------------|-----------------|------|------|-------------|------------|-------------|
| DAC8801IDGKR | VSSOP        | DGK             | 8    | 2500 | 350.0       | 350.0      | 43.0        |



DGK (S-PDSO-G8)

PLASTIC SMALL-OUTLINE PACKAGE



## NOTES:

- A. All linear dimensions are in millimeters.
- B. This drawing is subject to change without notice.
- C. Body length does not include mold flash, protrusions, or gate burrs. Mold flash, protrusions, or gate burrs shall not exceed 0.15 per end.
- D. Body width does not include interlead flash. Interlead flash shall not exceed 0.50 per side.
- E. Falls within JEDEC MO-187 variation AA, except interlead flash.

DGK (S-PDSO-G8)

PLASTIC SMALL OUTLINE PACKAGE



- NOTES:
- All linear dimensions are in millimeters.
  - This drawing is subject to change without notice.
  - Publication IPC-7351 is recommended for alternate designs.
  - Laser cutting apertures with trapezoidal walls and also rounding corners will offer better paste release. Customers should contact their board assembly site for stencil design recommendations. Refer to IPC-7525 for other stencil recommendations.
  - Customers should contact their board fabrication site for solder mask tolerances between and around signal pads.

**DRB 8**

**GENERIC PACKAGE VIEW**

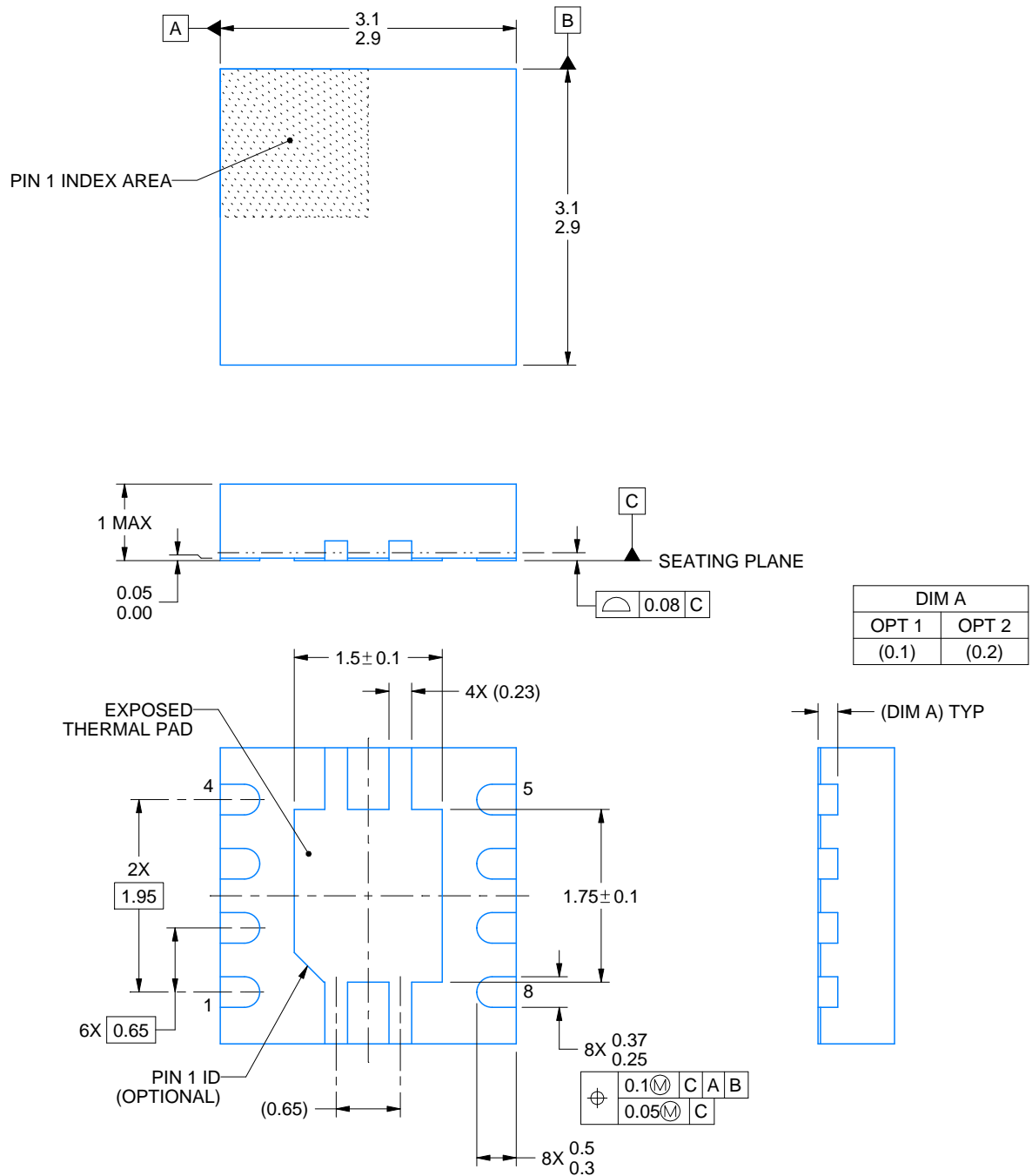
**VSON - 1 mm max height**

PLASTIC SMALL OUTLINE - NO LEAD



Images above are just a representation of the package family, actual package may vary.  
Refer to the product data sheet for package details.

4203482/L



4218875/A 01/2018

## NOTES:

1. All linear dimensions are in millimeters. Any dimensions in parenthesis are for reference only. Dimensioning and tolerancing per ASME Y14.5M.
2. This drawing is subject to change without notice.
3. The package thermal pad must be soldered to the printed circuit board for thermal and mechanical performance.

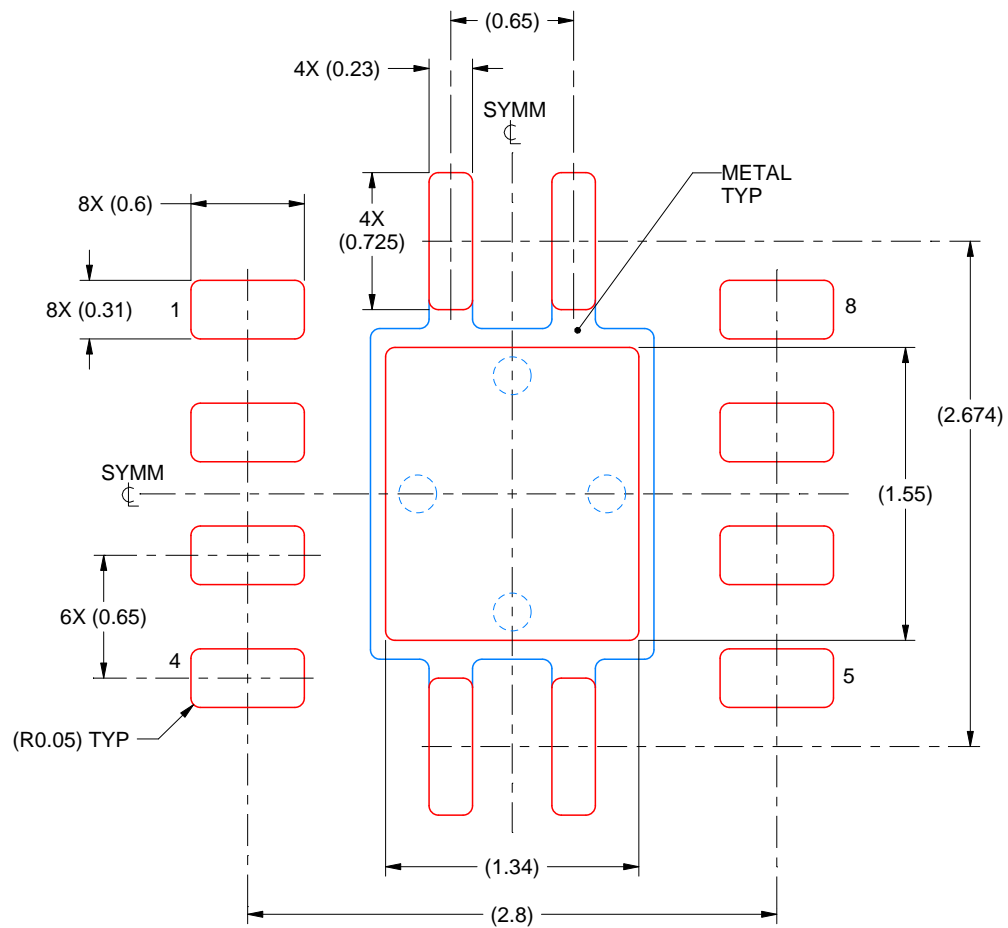


# EXAMPLE STENCIL DESIGN

DRB0008A

VSON - 1 mm max height

PLASTIC SMALL OUTLINE - NO LEAD



SOLDER PASTE EXAMPLE  
BASED ON 0.125 mm THICK STENCIL

EXPOSED PAD  
84% PRINTED SOLDER COVERAGE BY AREA  
SCALE:25X

4218875/A 01/2018

NOTES: (continued)

6. Laser cutting apertures with trapezoidal walls and rounded corners may offer better paste release. IPC-7525 may have alternate design recommendations.

## IMPORTANT NOTICE AND DISCLAIMER

TI PROVIDES TECHNICAL AND RELIABILITY DATA (INCLUDING DATA SHEETS), DESIGN RESOURCES (INCLUDING REFERENCE DESIGNS), APPLICATION OR OTHER DESIGN ADVICE, WEB TOOLS, SAFETY INFORMATION, AND OTHER RESOURCES "AS IS" AND WITH ALL FAULTS, AND DISCLAIMS ALL WARRANTIES, EXPRESS AND IMPLIED, INCLUDING WITHOUT LIMITATION ANY IMPLIED WARRANTIES OF MERCHANTABILITY, FITNESS FOR A PARTICULAR PURPOSE OR NON-INFRINGEMENT OF THIRD PARTY INTELLECTUAL PROPERTY RIGHTS.

These resources are intended for skilled developers designing with TI products. You are solely responsible for (1) selecting the appropriate TI products for your application, (2) designing, validating and testing your application, and (3) ensuring your application meets applicable standards, and any other safety, security, regulatory or other requirements.

These resources are subject to change without notice. TI grants you permission to use these resources only for development of an application that uses the TI products described in the resource. Other reproduction and display of these resources is prohibited. No license is granted to any other TI intellectual property right or to any third party intellectual property right. TI disclaims responsibility for, and you will fully indemnify TI and its representatives against, any claims, damages, costs, losses, and liabilities arising out of your use of these resources.

TI's products are provided subject to [TI's Terms of Sale](#) or other applicable terms available either on [ti.com](#) or provided in conjunction with such TI products. TI's provision of these resources does not expand or otherwise alter TI's applicable warranties or warranty disclaimers for TI products.

TI objects to and rejects any additional or different terms you may have proposed.

Mailing Address: Texas Instruments, Post Office Box 655303, Dallas, Texas 75265  
Copyright © 2023, Texas Instruments Incorporated