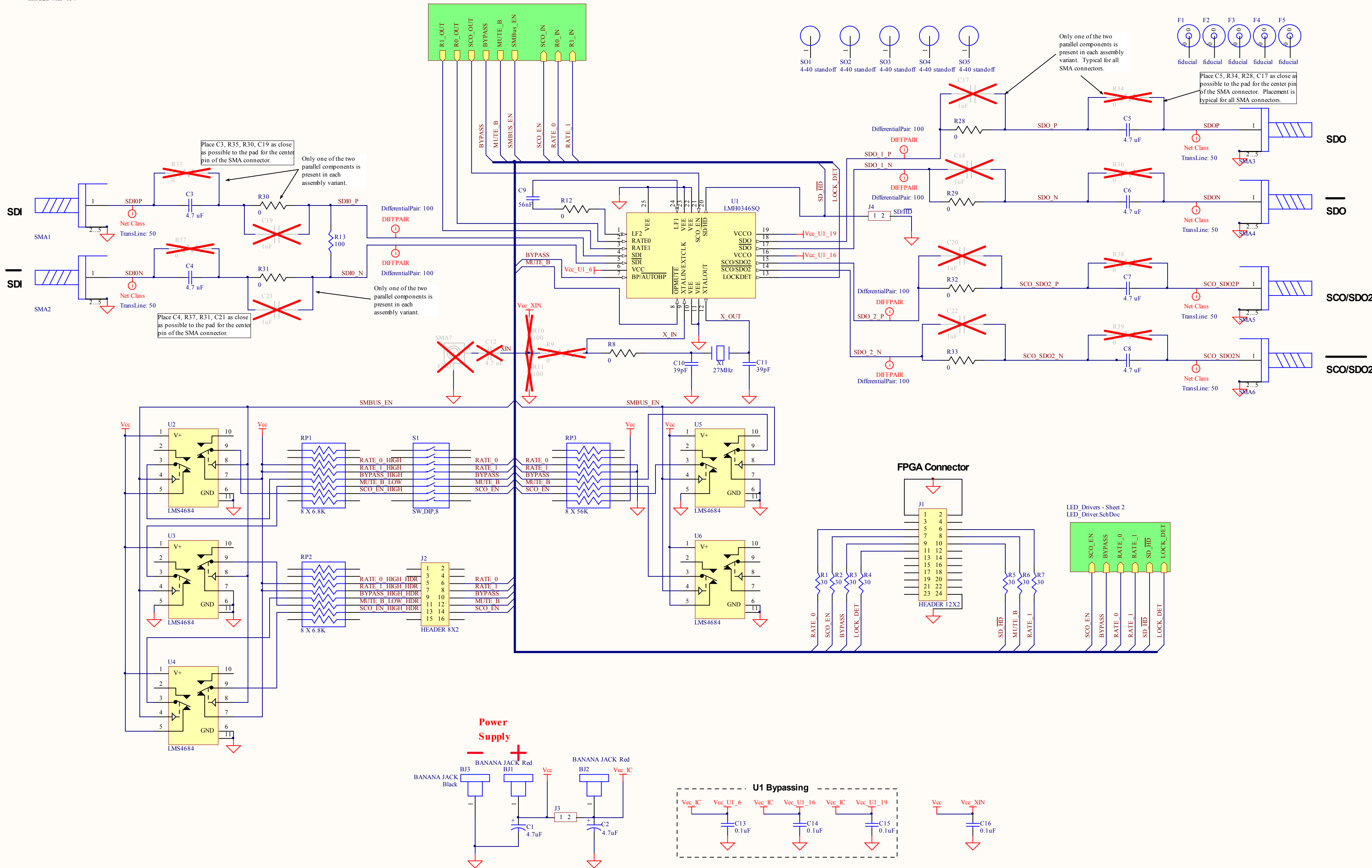
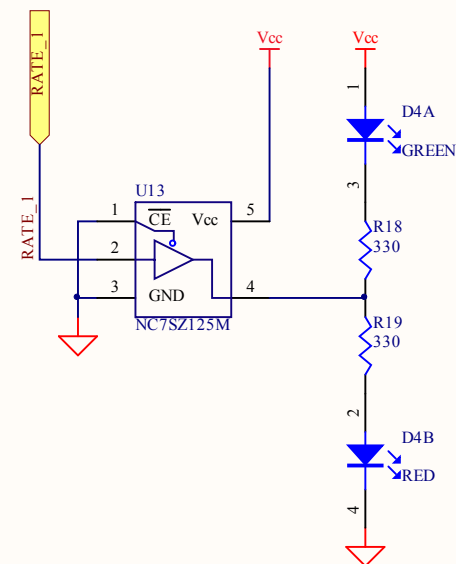
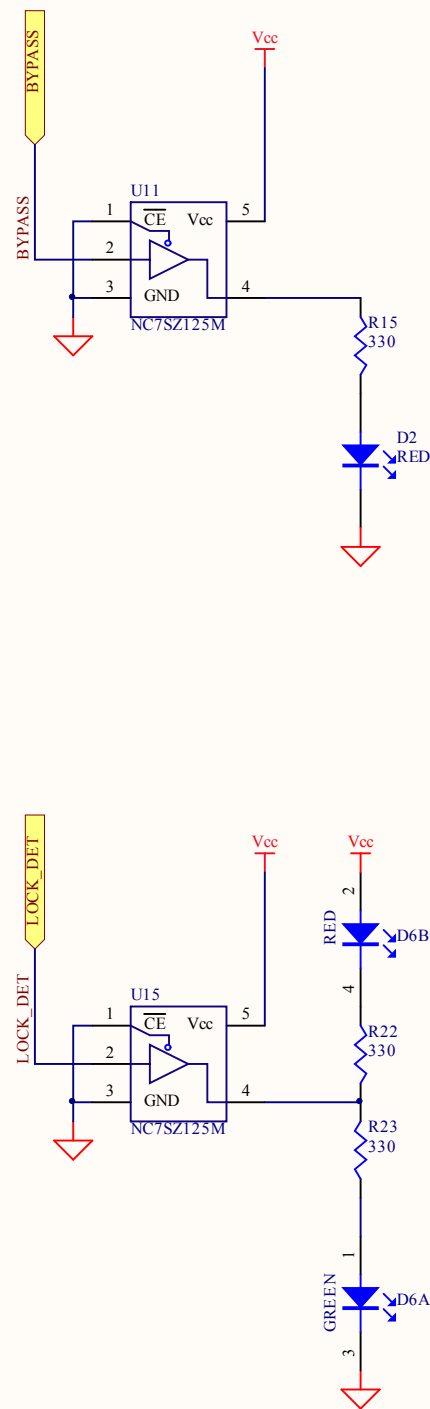
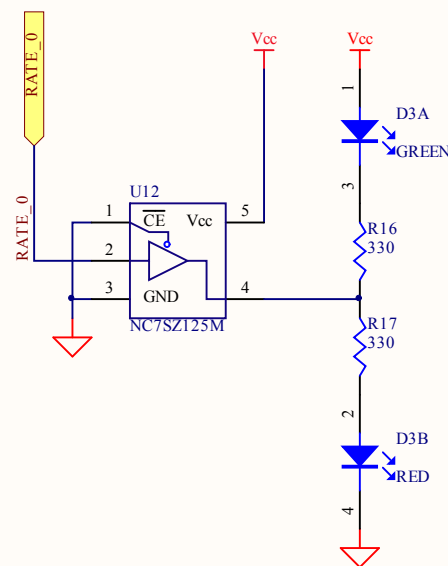
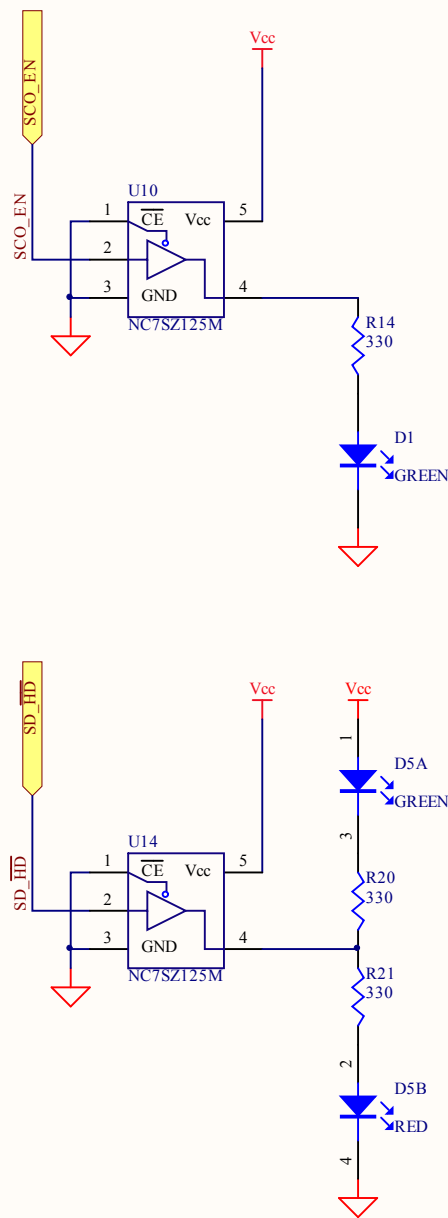


Notes:

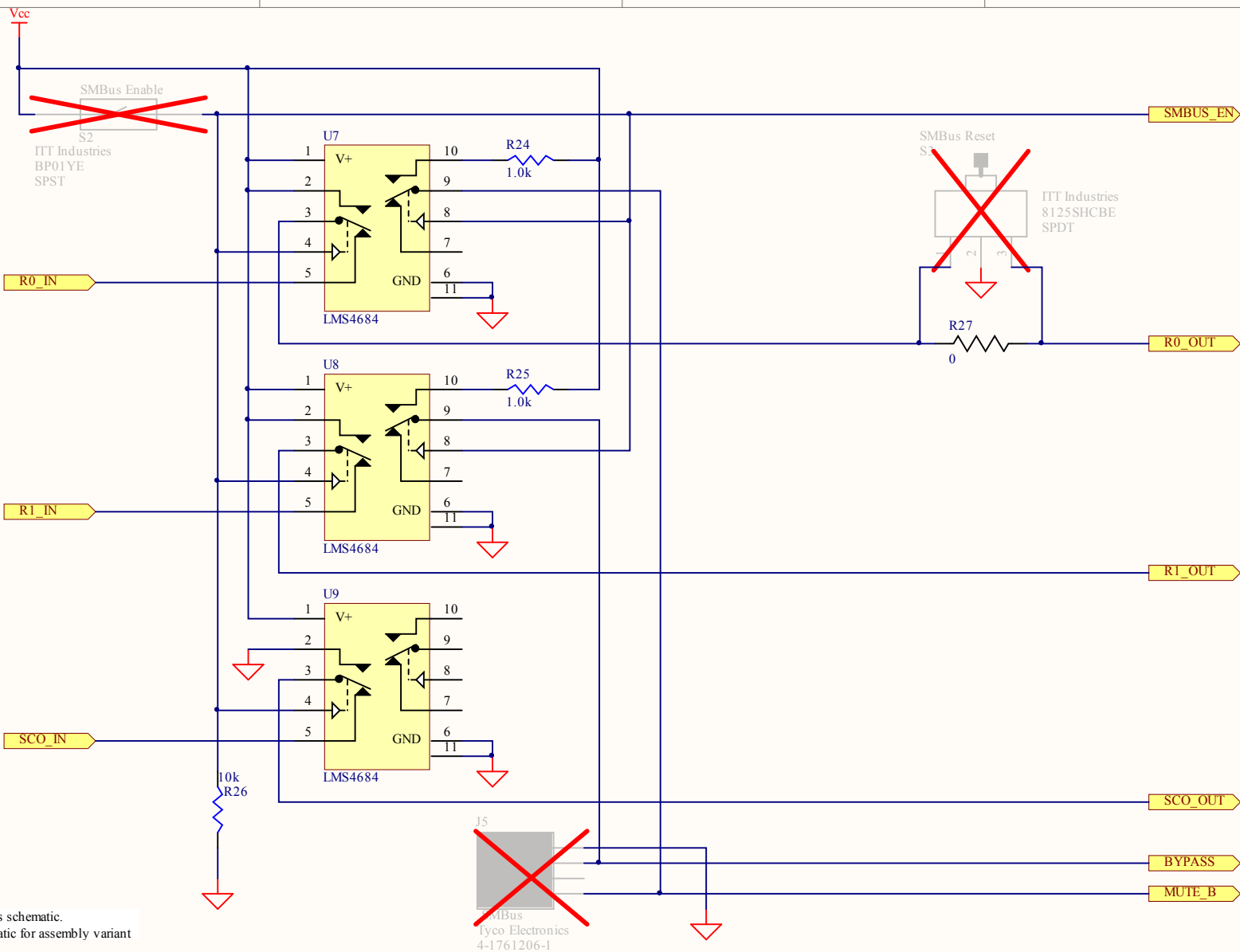
1. Top level schematic.
2. Schematic for assembly variant
Assembly Variant: **SD346_EVK_REV_D_600090 0603 Coupling Caps**
3. Unplaced components for this assembly variant are shown marked through with "X".

SMBus - Sheet 3
SMBus.SchDoc





Notes:
 1. LED and drivers schematic.
 2. Schematic for assembly variant
Assembly Variant: SD346_EVK_REV_D_600090 0603 Coupling Caps
 3. Unplaced components for this assembly variant are shown marked through with "X".



Notes:

1. SMBus schematic.
2. Schematic for assembly variant

Assembly Variant: SDB46_EVK_REV_D_600090 0603 Coupling Caps

3. Unplaced components for this assembly variant are shown marked through with "X".

National Semiconductor and/or its licensors do not warrant the accuracy or completeness of this specification or any information contained therein. National and/or its licensors do not warrant that this design will meet the specifications, will be suitable for your application or fit for any particular purpose, or will operate in an implementation. National and/or its licensors do not warrant that the design is production worthy. You should completely validate and test your design.

Title: **SCHEMATIC, LMH0346SQ EVK**

Size: ANSI-A Number: 870600090-00 Revision F

Date: 8/1/2008

File: SMBus.SchDoc

Technical Support: <http://www.national.com/support/>

Sheet: 3 of 3

National Semiconductor
The Sight & Sound of Information
<http://www.national.com>

© Copyright, National Semiconductor, 2007