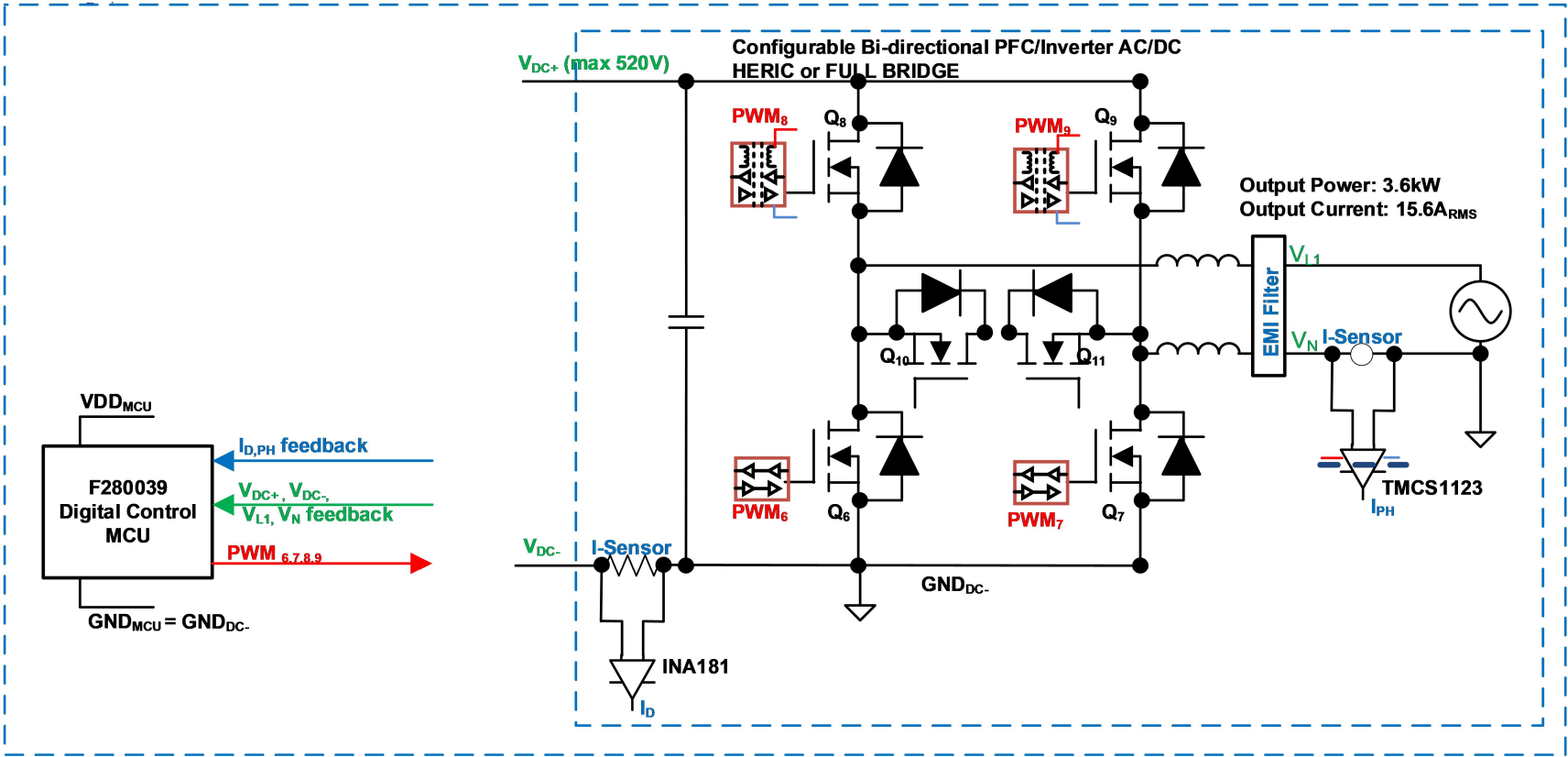
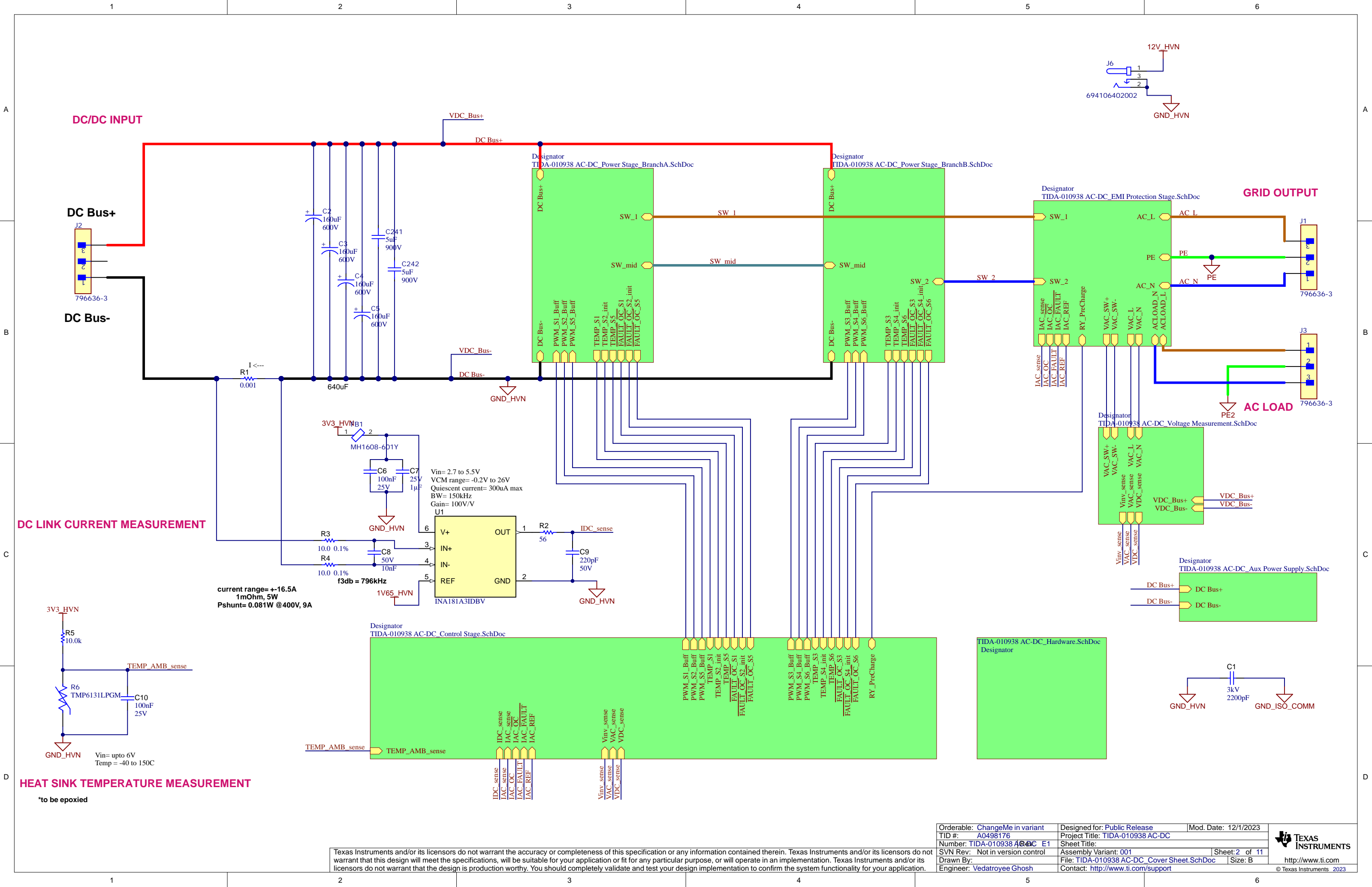


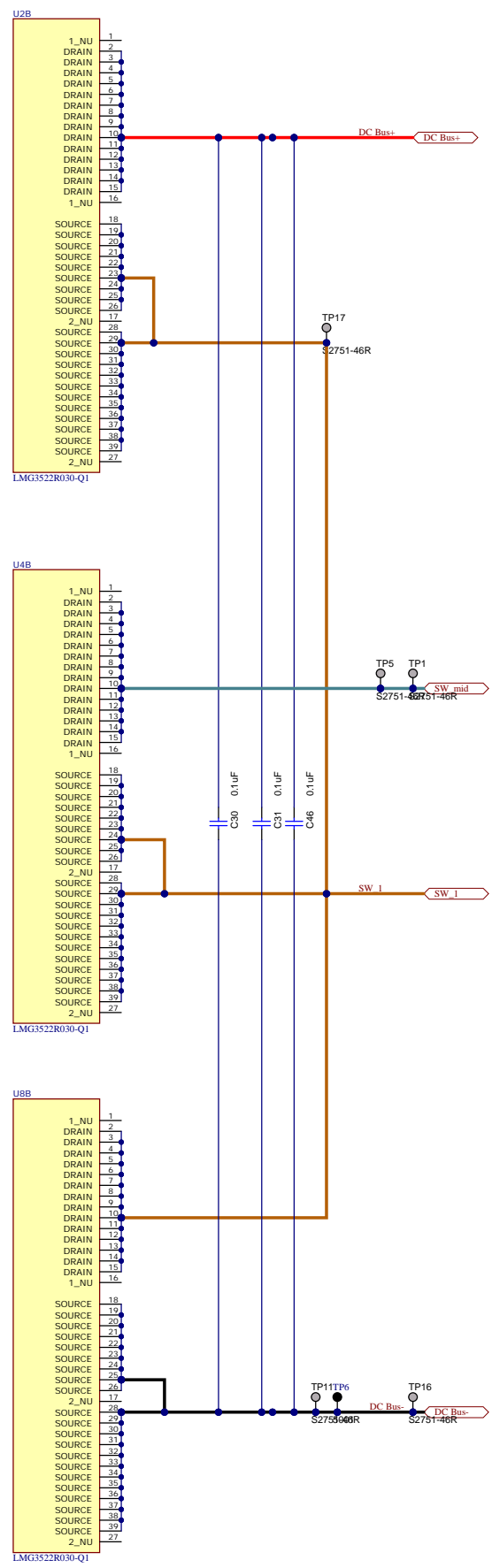
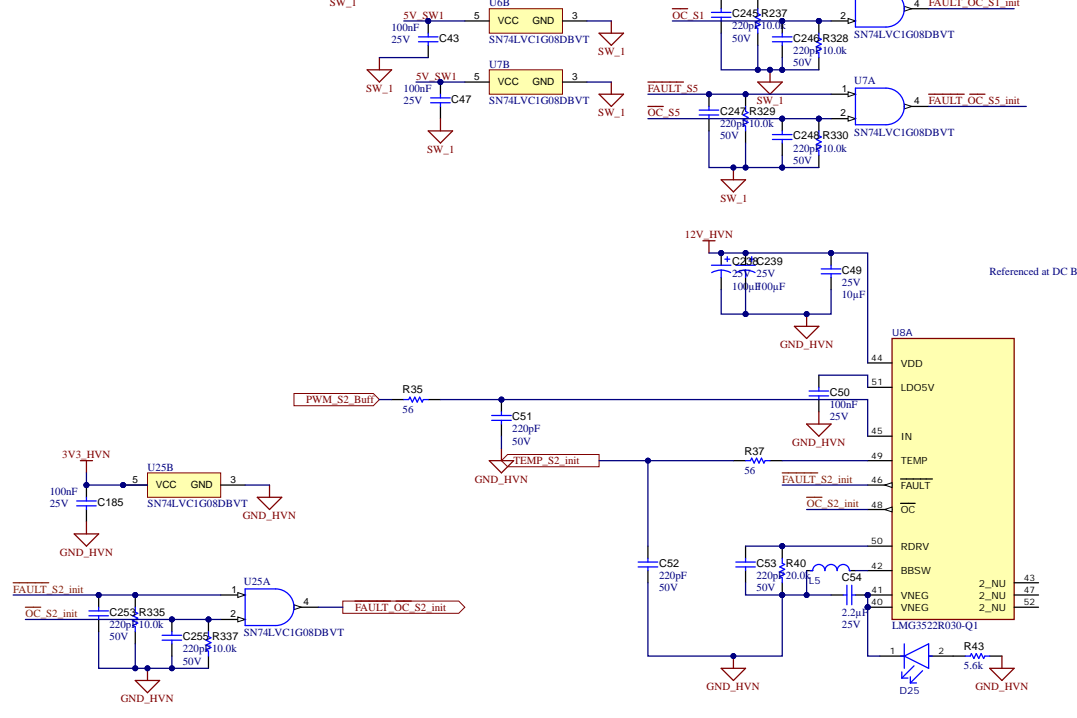
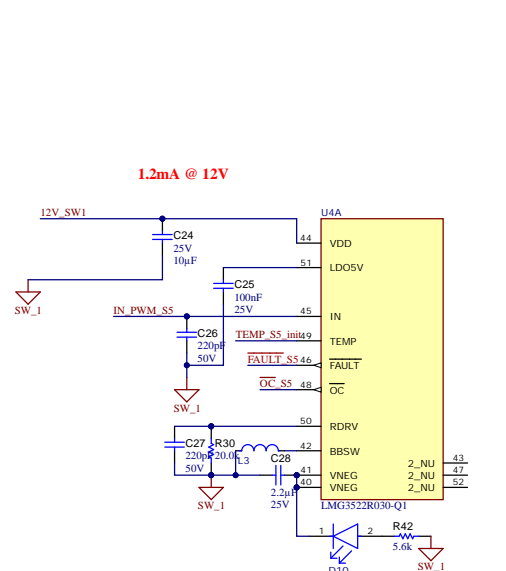
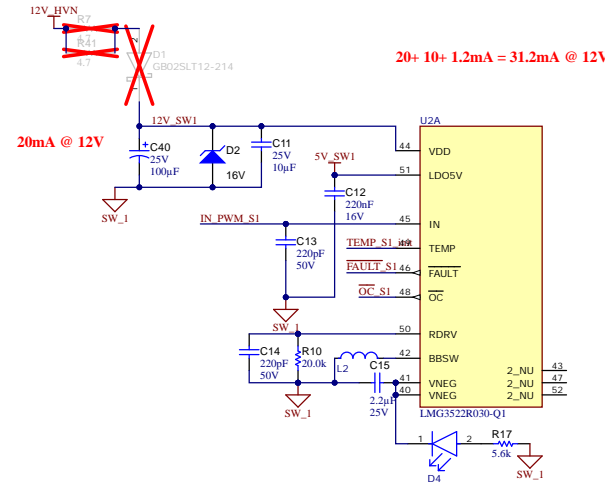
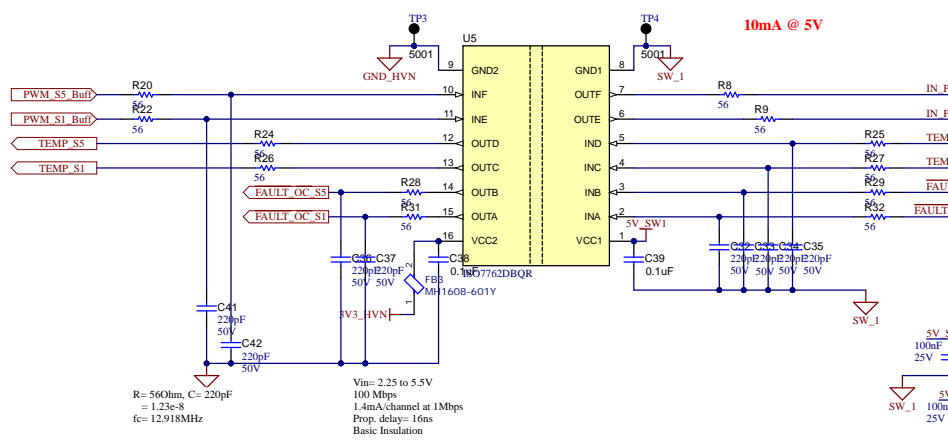
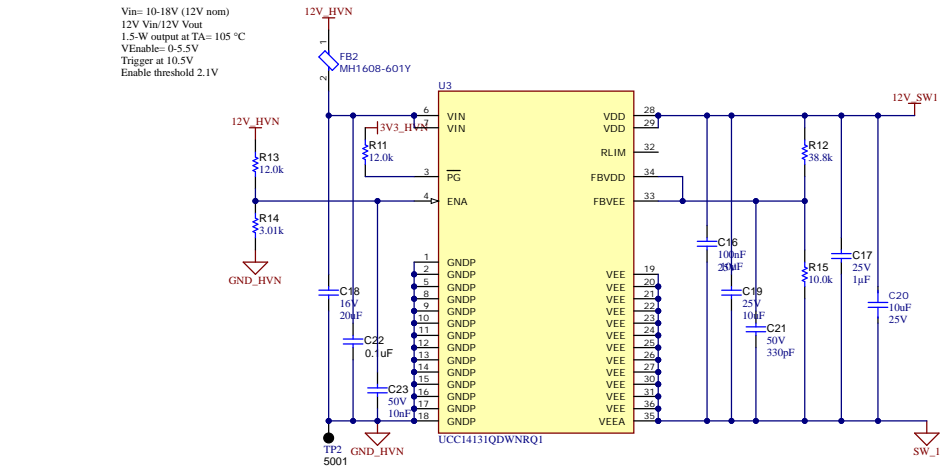
Revision History				
Rev	ECN #	Approved Date	Approved by	Notes
N/A	N/A	N/A	N/A	N/A





Texas Instruments and/or its licensors do not warrant the accuracy or completeness of this specification or any information contained therein. Texas Instruments and/or its licensors do not warrant that this design will meet the specifications, will be suitable for your application or fit for any particular purpose, or will operate in an implementation. Texas Instruments and/or its licensors do not warrant that the design is production worthy. You should completely validate and test your design implementation to confirm the system functionality for your application.

Orderable: ChangeMe in variant	Designed for: Public Release	Mod. Date: 12/1/2023
TID #: A0498176	Project Title: TIDA-010938 AC-DC	
Number: TIDA-010938 AC-DC E1	Sheet Title:	
SVN Rev: Not in version control	Assembly Variant: 001	Sheet: 2 of 11
Drawn By:	File: TIDA-010938 AC-DC_Cover Sheet.SchDoc	Size: B
Engineer: Vedatroyee Ghosh	Contact: http://www.ti.com/support	

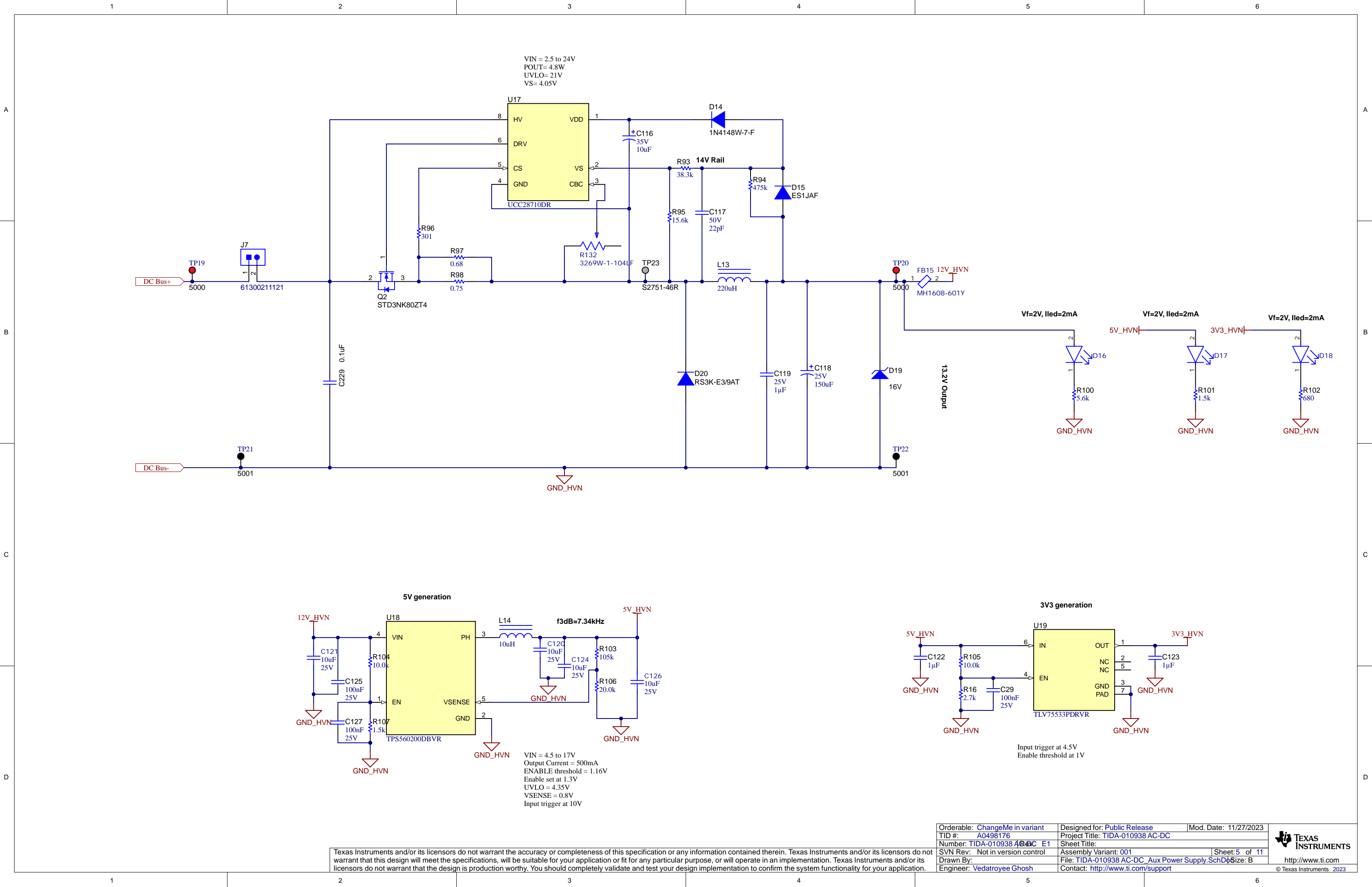


Vin= 10-18V (12V nom)
12V Vin/12V Vout
1.5-W output at TA= 105 °C
VEnable= 0-5.5V
Trigger at 10.5V
Enable threshold 2.1V

Vin= 2.25 to 5.5V
100 Mbps
1.4mA/channel at 1Mbps
Prop. delay= 11ns
Basic Insulation

R= 560hm C= 220pF
= 1.23e-8
fc= 12.918MHz

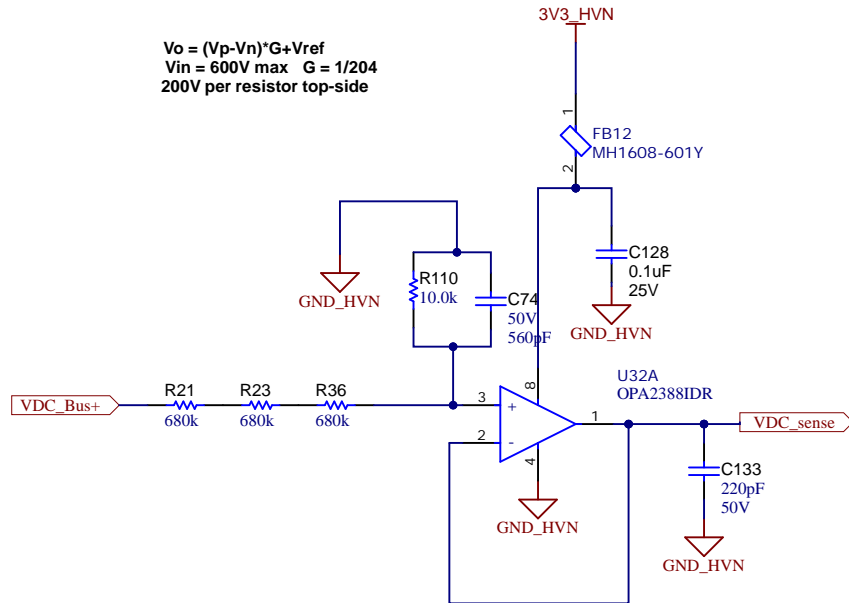
Texas Instruments and/or its licensors do not warrant the accuracy or completeness of this specification or any information contained therein. Texas Instruments and/or its licensors do not warrant that this design will meet the specifications, will be suitable for your application or fit for any particular purpose, or will operate in an implementation. Texas Instruments and/or its licensors do not warrant that the design is production worthy. You should completely validate and test your design implementation to confirm the system functionality for your application.



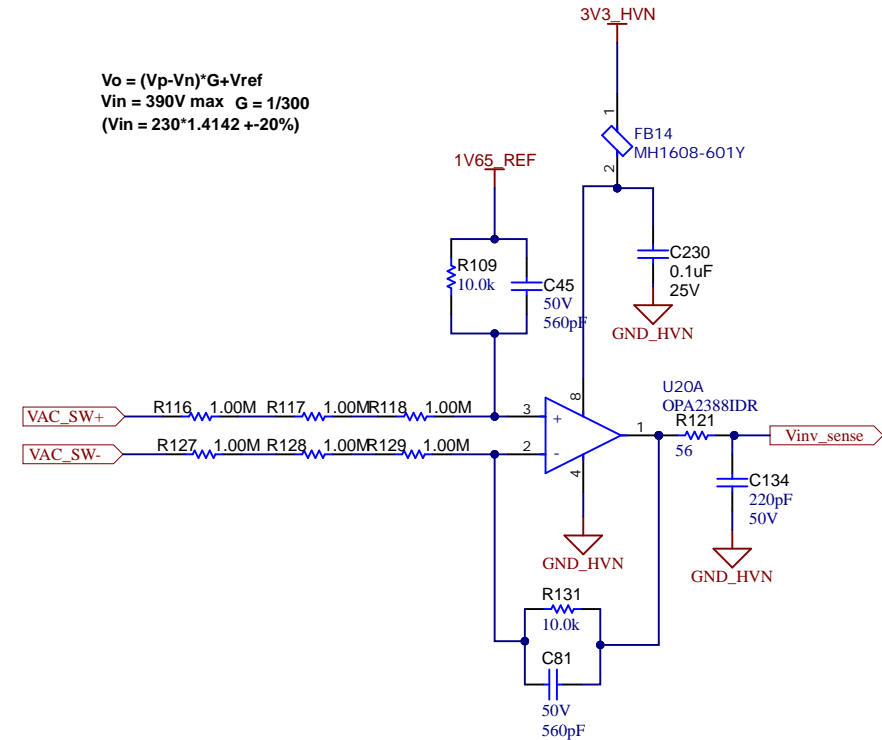
Texas Instruments and/or its licensors do not warrant the accuracy or completeness of this specification or any information contained therein. Texas Instruments and/or its licensors do not warrant that this design will meet the specifications, will be suitable for your application or fit for any particular purpose, or will operate in an implementation. Texas Instruments and/or its licensors do not warrant that the design is production worthy. You should completely validate and test your design implementation to confirm the system functionality for your application.

Orderable: ChangeMe in variant	Designed for: Public Release	Mod. Date: 11/27/2023
TID #: A0498176	Project Title: TIDA-010938 AC-DC	
Number: TIDA-010938 AC-DC E1	Sheet Title:	
SVN Rev: Not in version control	Assembly Variant: 001	Sheet: 5 of 11
Drawn By:	File: TIDA-010938 AC-DC_Aux Power Supply_SchDoc	Size: B
Engineer: Vedatroyee Ghosh	Contact: http://www.ti.com/support	

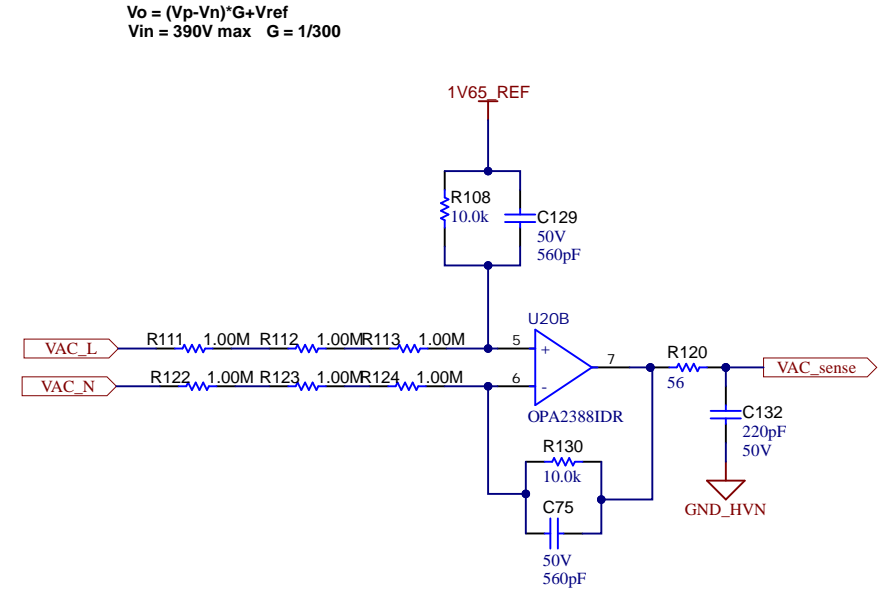
BUS VOLTAGE SENSING



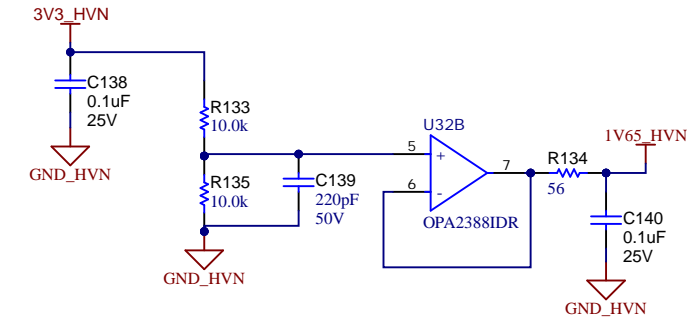
EMI INPUT VOLTAGE SENSING

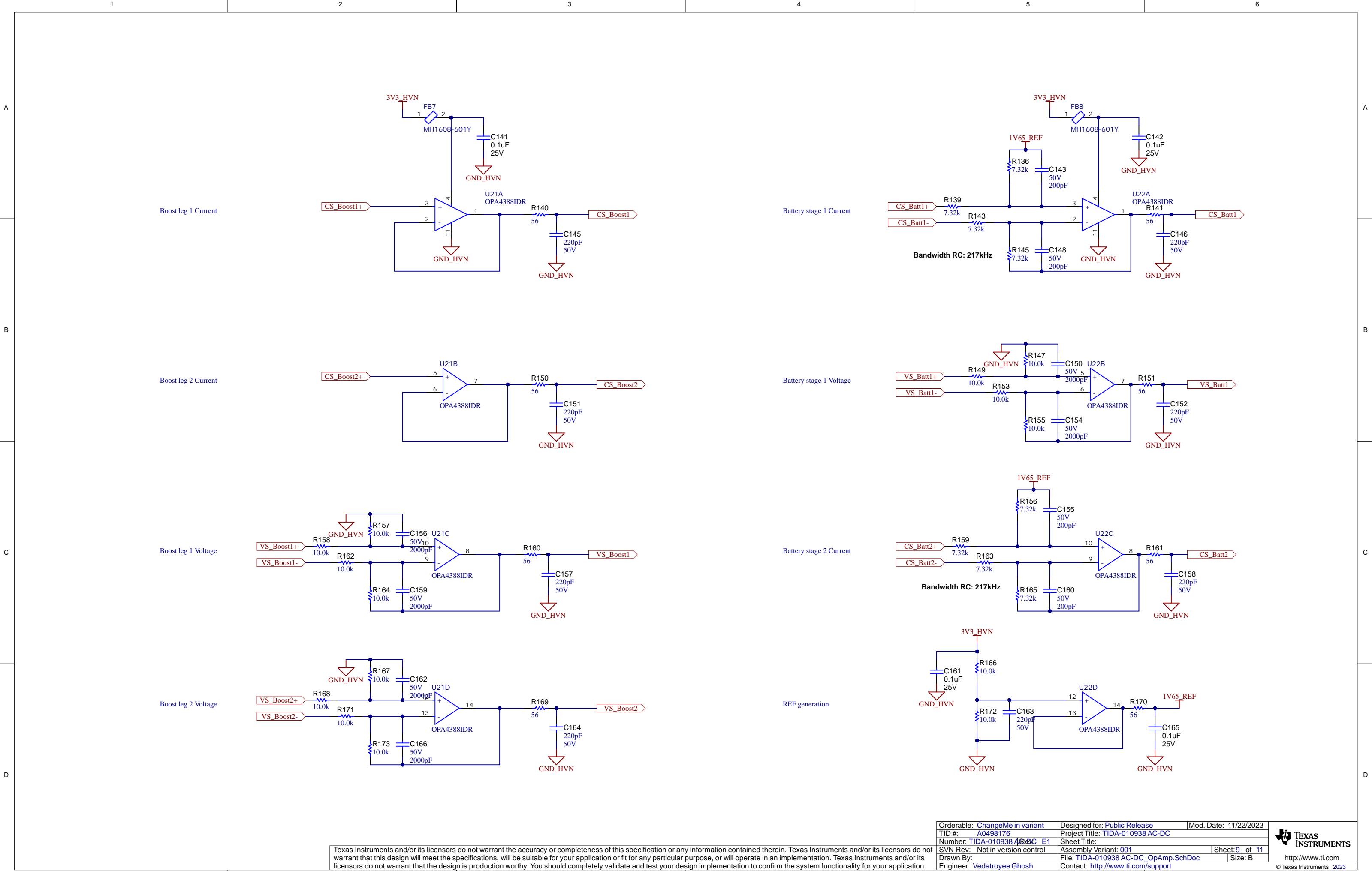


INVERTER OUTPUT VOLTAGE SENSING



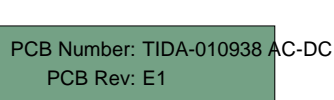
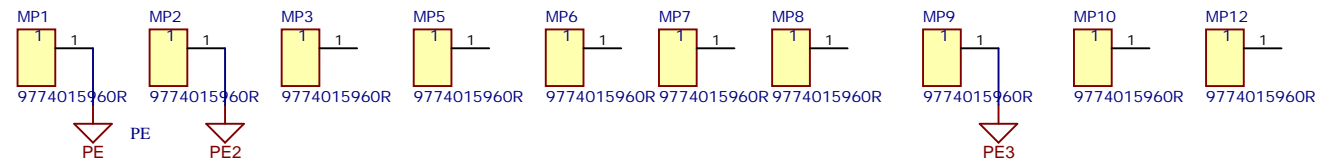
1V65 generation





Texas Instruments and/or its licensors do not warrant the accuracy or completeness of this specification or any information contained therein. Texas Instruments and/or its licensors do not warrant that this design will meet the specifications, will be suitable for your application or fit for any particular purpose, or will operate in an implementation. Texas Instruments and/or its licensors do not warrant that the design is production worthy. You should completely validate and test your design implementation to confirm the system functionality for your application.

Orderable: ChangeMe in variant	Designed for: Public Release	Mod. Date: 11/22/2023
TID #: A0498176	Project Title: TIDA-010938 AC-DC	
Number: TIDA-010938 AC-DC E1	Sheet Title:	
SVN Rev: Not in version control	Assembly Variant: 001	Sheet: 9 of 11
Drawn By:	File: TIDA-010938 AC-DC_OpAmp.SchDoc	Size: B
Engineer: Vedatroyee Ghosh	Contact: http://www.ti.com/support	

[illegible]

LBL1

PCB Label

THT-14-423-10
Size: 0.65" x 0.20"

ZZ1

Label Assembly Note

This Assembly Note is for PCB labels only

ZZ2

Assembly Note

These assemblies are ESD sensitive, ESD precautions shall be observed.

ZZ3

Assembly Note

These assemblies must be clean and free from flux and all contaminants. Use of no clean flux is not acceptable.

ZZ4

Assembly Note

These assemblies must comply with workmanship standards IPC-A-610 Class 2, unless otherwise specified.