

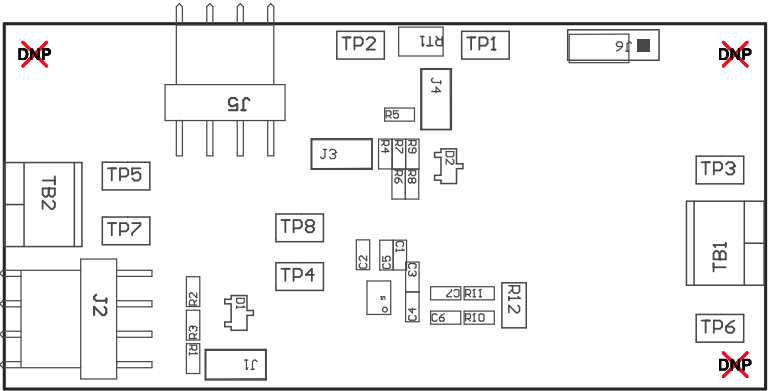
- ZZ1

■Install label in silkscreened box after final wash. Text shall be 8 pt font. Text shall be per the Label Table in the PDF schematic.
- ZZ2

■These assemblies are ESD sensitive, ESD precautions shall be observed.
- ZZ3

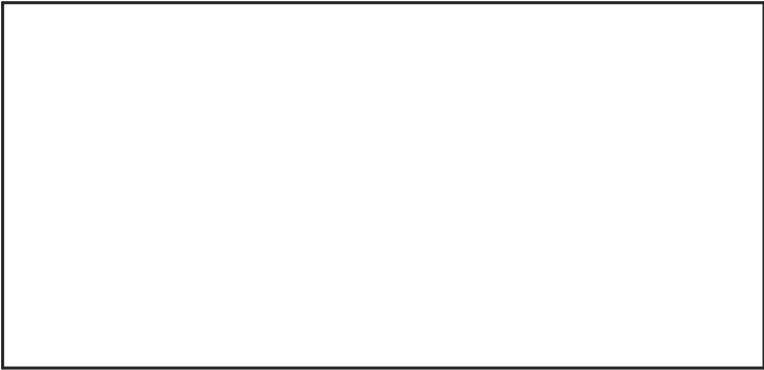
■These assemblies must be clean and free from flux and all contaminants. Use of no clean flux is not acceptable.
- ZZ4

■These assemblies must comply with workmanship standards IPC-A-610 Class 2, unless otherwise specified.



COMPONENTS MARKED 'DNP' SHOULD NOT BE POPULATED.
ASSEMBLY VARIANT: 001

PCB VIEWED FROM TOP SIDE	BOARD #: PWR702	REV: A	SUN REV: Not In VersionControl
IGNORE ->			
PLOT NAME = Top Assembly Drawing	GENERATED : 2/26/2015 12:37:17 PM	TEXAS INSTRUMENTS	



COMPONENTS MARKED 'DNP' SHOULD NOT BE POPULATED.
ASSEMBLY VARIANT: 001

PCB VIEWED FROM BOTTOM SIDE	BOARD #: PWR702	REV: A	SUN REV: Not In VersionControl
	IGNORE ->		
PLOT NAME = Bottom Assembly Drawing	GENERATED : 2/26/2015 12:37:17 PM		TEXAS INSTRUMENTS