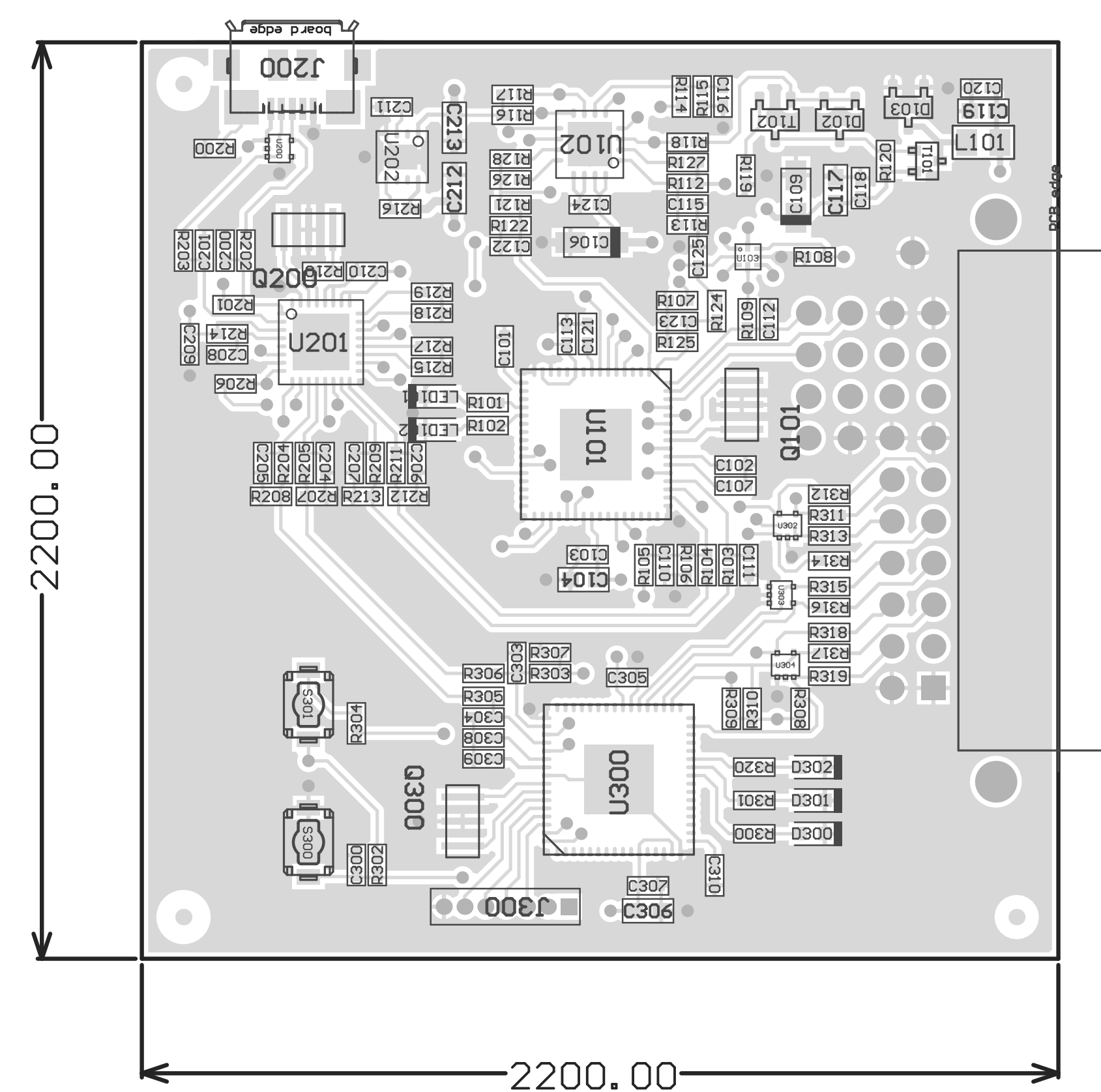


MSP Board Dimensions

Z22 ■ These assemblies are ESD sensitive, ESD precautions shall be observed.

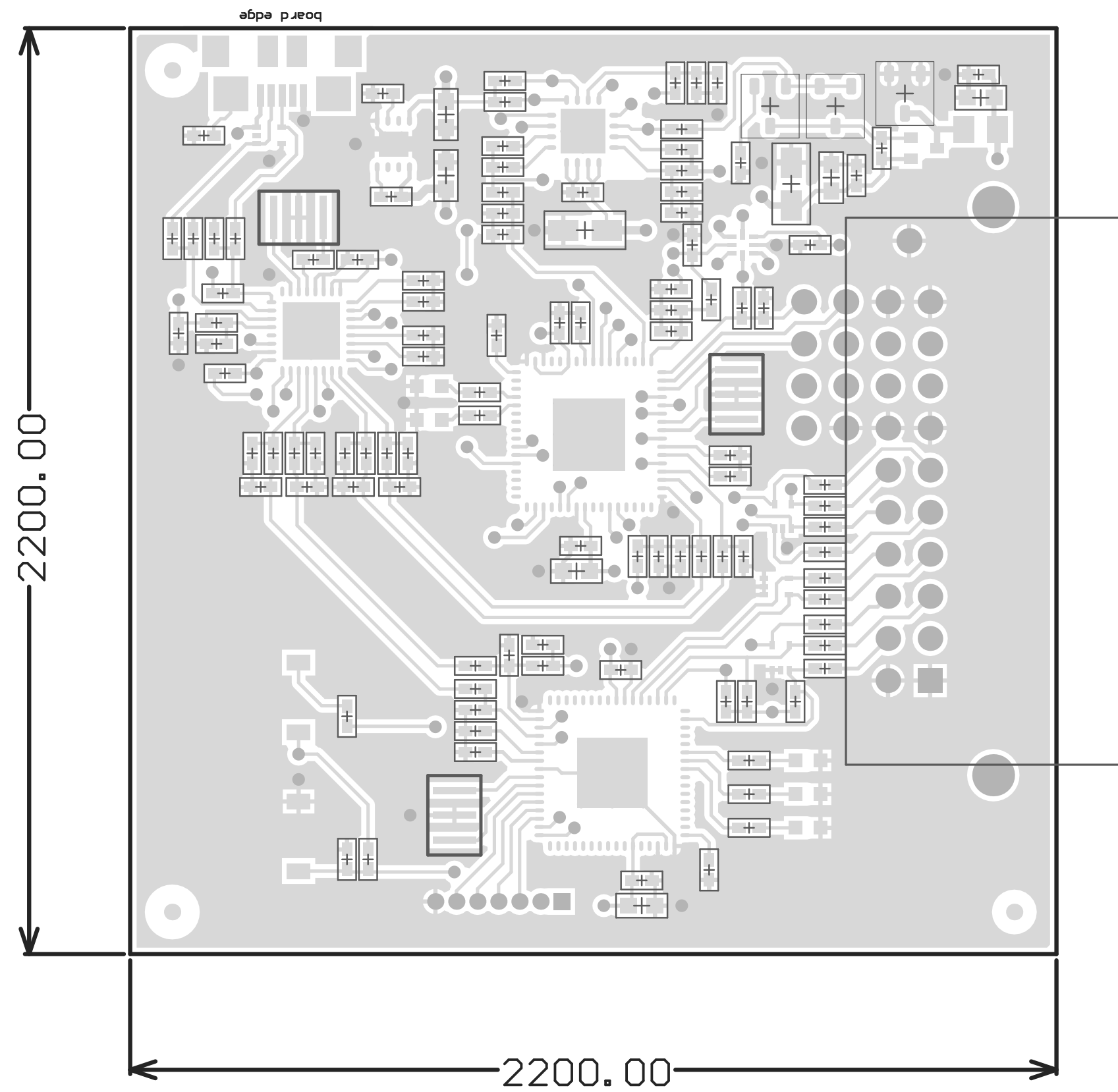
Z23 ■ These assemblies must be clean and free from flux and all contaminants. Use of no clean flux is not acceptable.

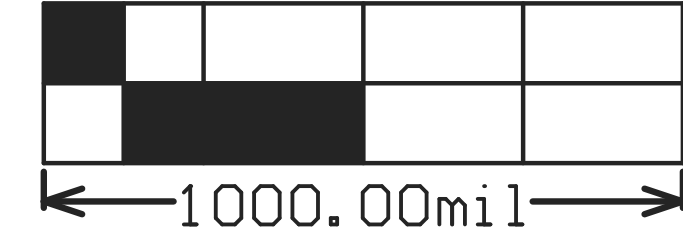
Z24 ■ These assemblies must comply with workmanship standards IPC-A-610 Class 2, unless otherwise specified.



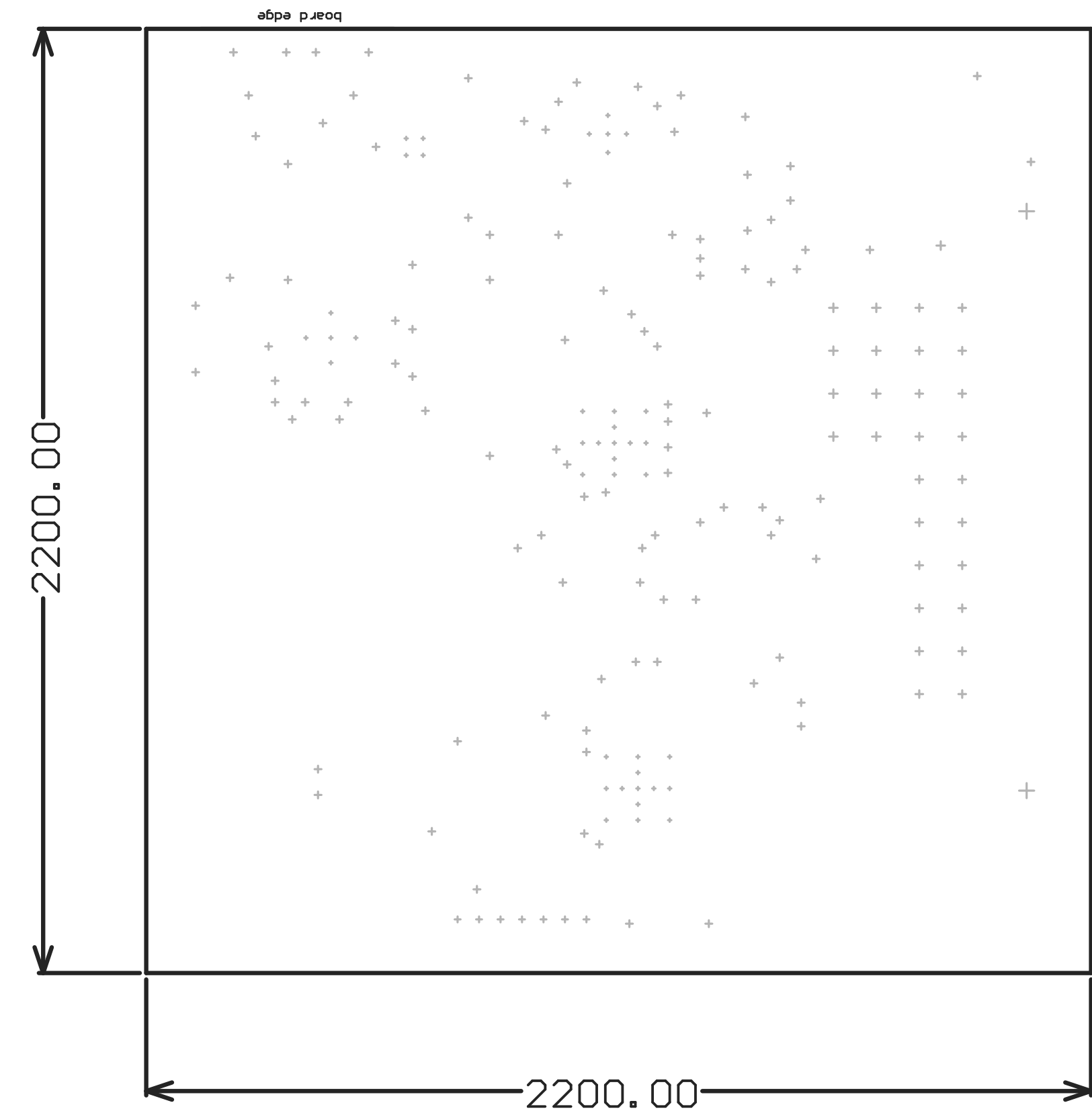
COMPONENTS MARKED 'DNP' SHOULD NOT BE POPULATED.
ASSEMBLY VARIANT: [No Variations]

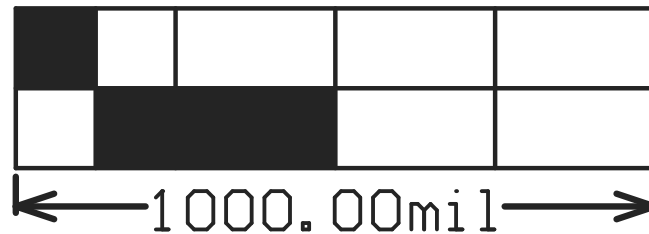
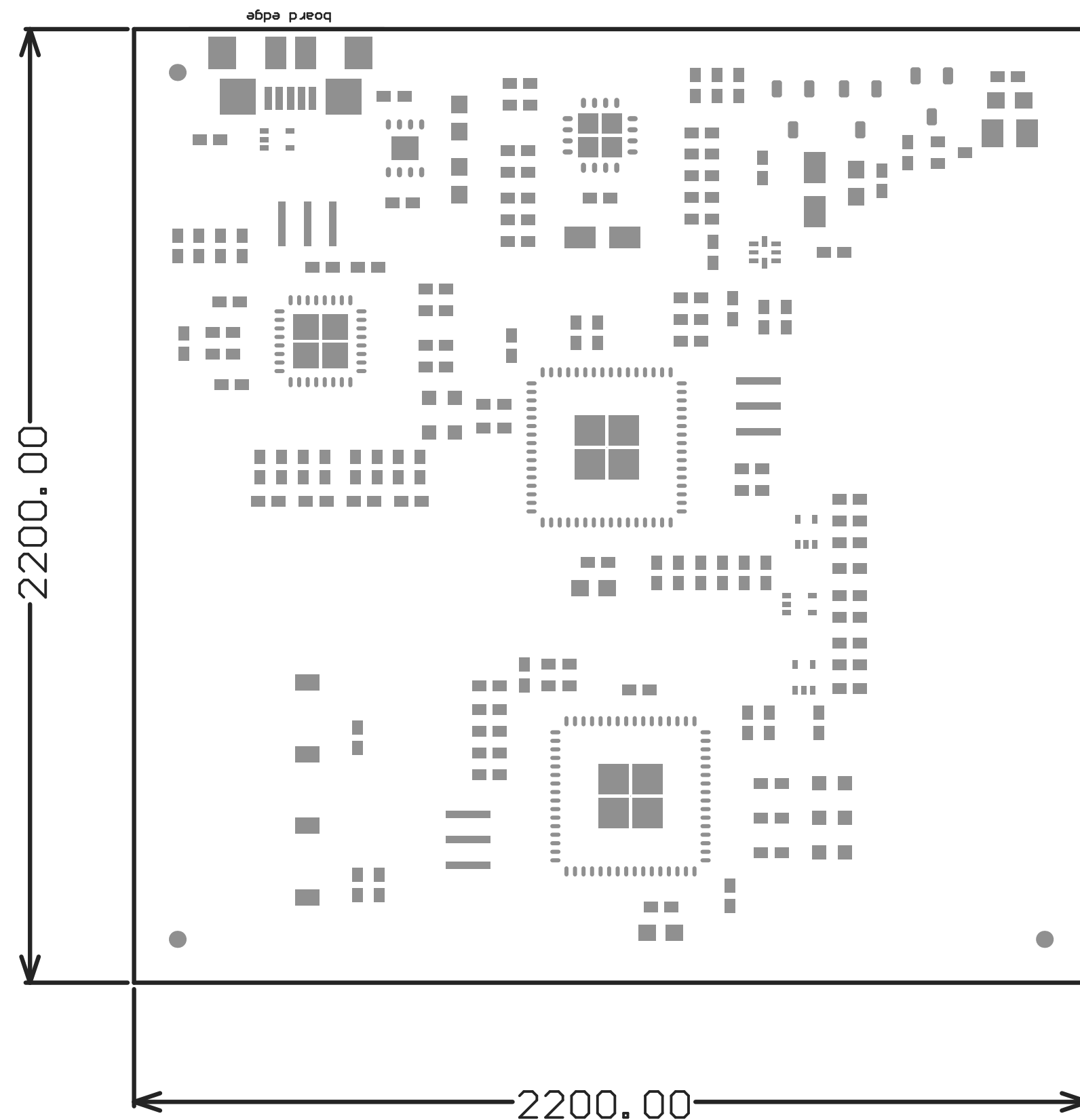
PCB VIEWED FROM TOP SIDE	BOARD #: CAPTIVATE-PCB	SMRREV: C	SUN REV: Not In VersionControl
M2 Board Dimensions			
PLOT NAME = TIDM-1CHP-DTECT-CO-Mechanical	GENERATED : 8/3/2016 8:23:04 AM		TEXAS INSTRUMENTS





M2 Board Dimensions

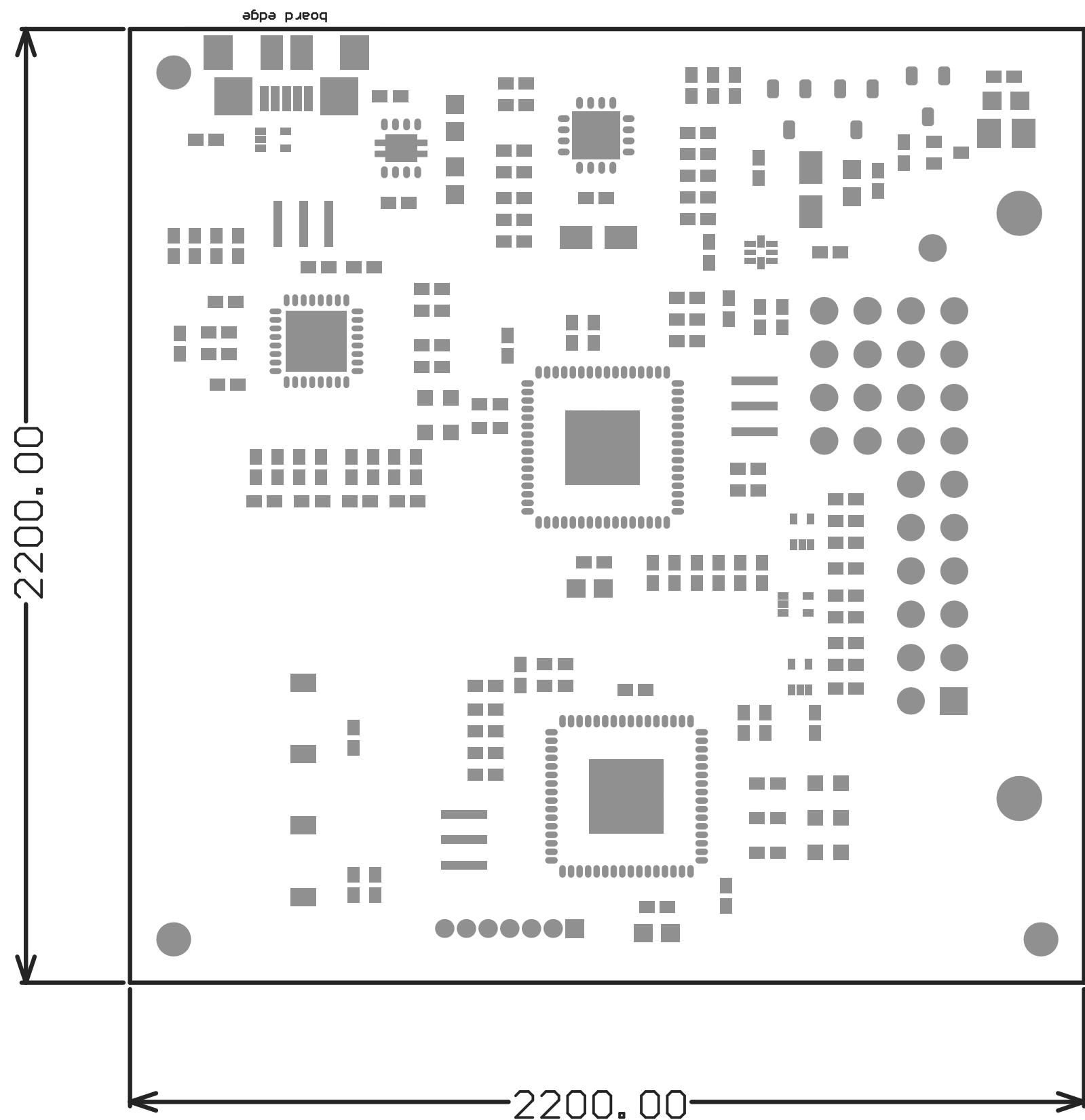


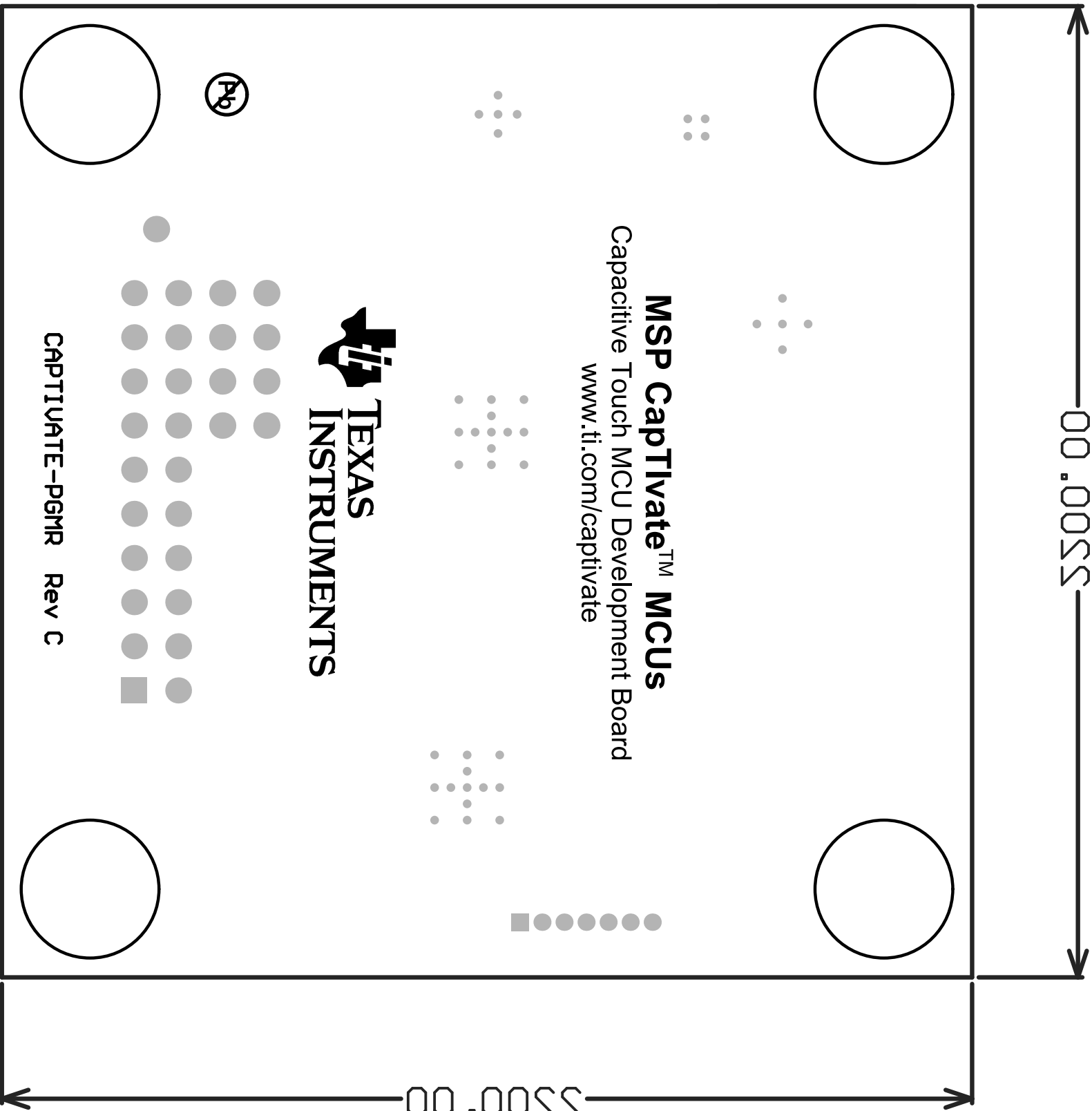
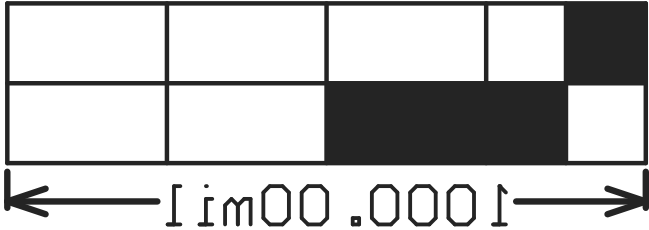


M2 Board Dimensions



M2 Board Dimensions





2019年12月10日

