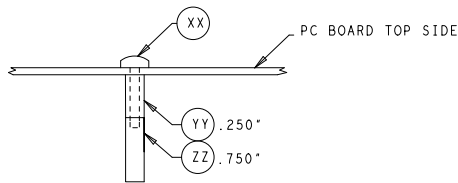
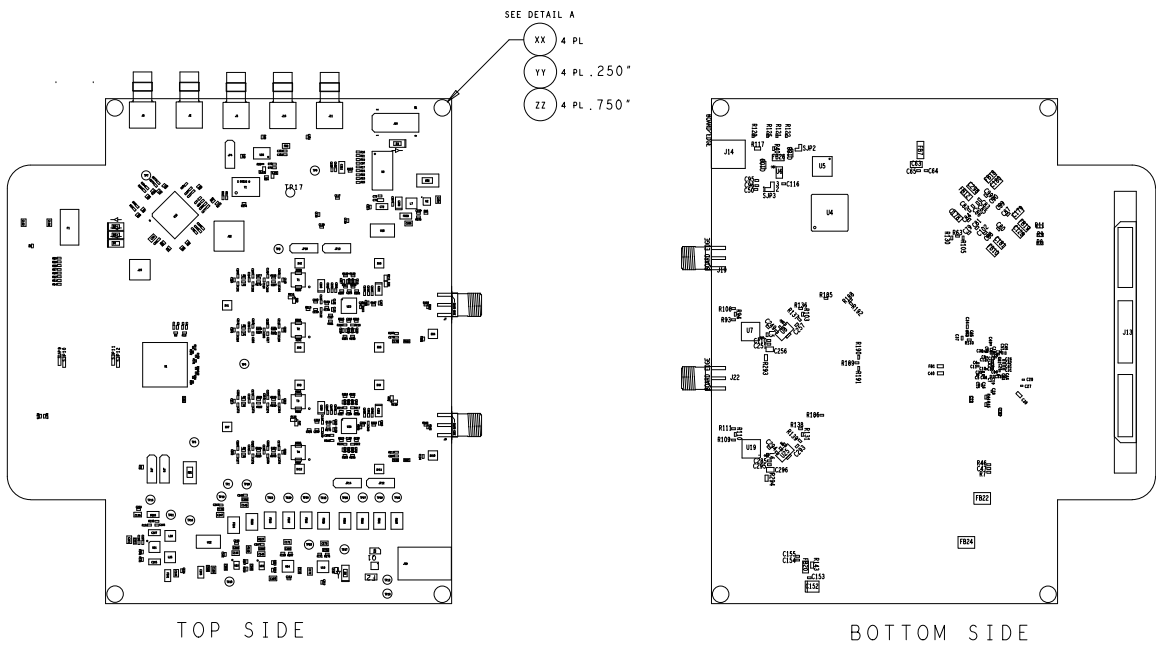


THIS DRAWING IS INTENDED TO HELP IN THE ASSEMBLY OF THE DESIGN.

1. REFER TO ODB++ FILE FOR SPECIFIC COMPONENT LOCATION INFORMATION.
2. FINISHED BOARD SHALL BE RoHS COMPLIANT.
3. 2 RF SHIELDS ARE REQUIRED PER BOARD.
4. MOUNT THE RF FENCE ON THE TOP OF THE PCB AFTER BOARD ASSEMBLY.  
SOLDER THE FENCE DOWN TO THE BOARD AROUND THE EDGES. NO GAPS.  
PLACE THE RF COVER ON THE FENCE.



DETAIL A (SIDE VIEW) - NO SCALE  
INSTALL SPACERS (YY & ZZ) AND SCREWS (XX) AS SHOWN.



TOP SIDE

BOTTOM SIDE

UNLESS OTHERWISE SPECIFIED DIMENSIONS ARE IN INCHES TOLERANCES ARE: FRACTIONS    DECIMALS    ANGLES +/-    .XX +/- .01    +/- .XXX +/- .005    +/-	CONTRACT NO.		TEXAS INSTRUMENTS INC.			
	APPROVALS		DATE		ASSEMBLY DRAWING TSW30H/SH84EVM	
	DRAWN    L. NGUYEN		07-06-12			
	ENGR    K. HSIA					
MATERIAL  SEE NOTE 5					SIZE    CODE IDENT NO.    DRAWING NO.    REV.  B	