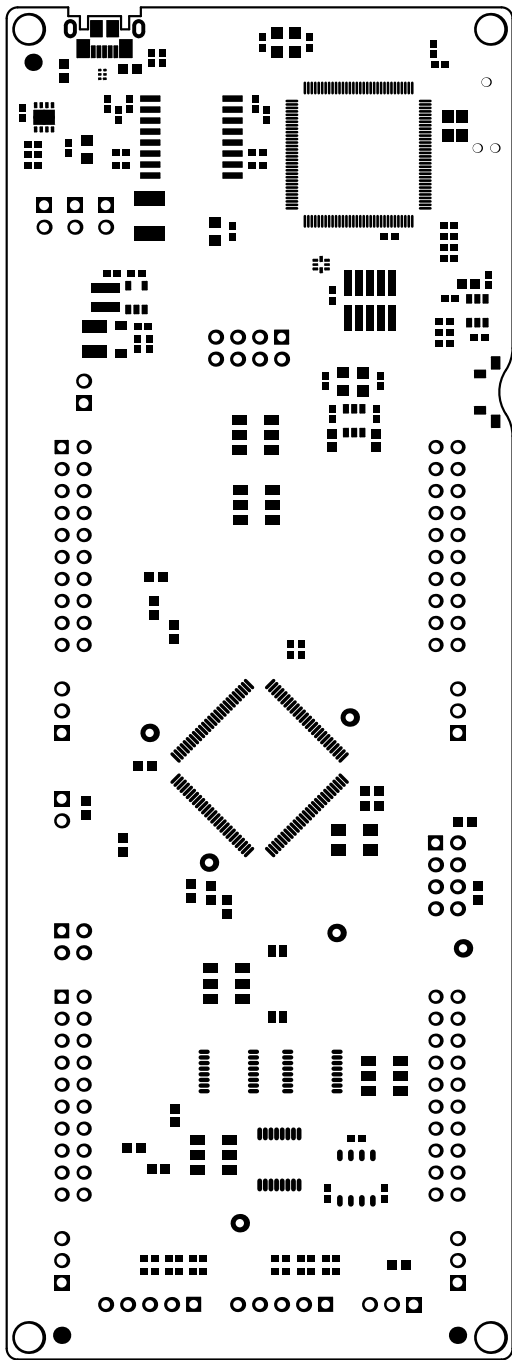
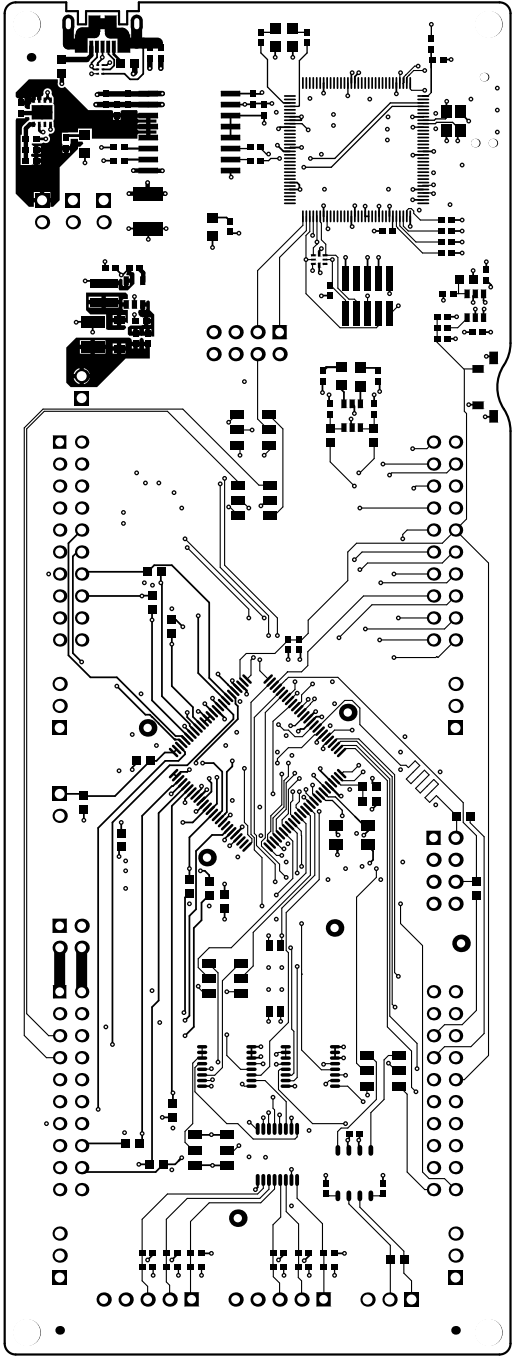


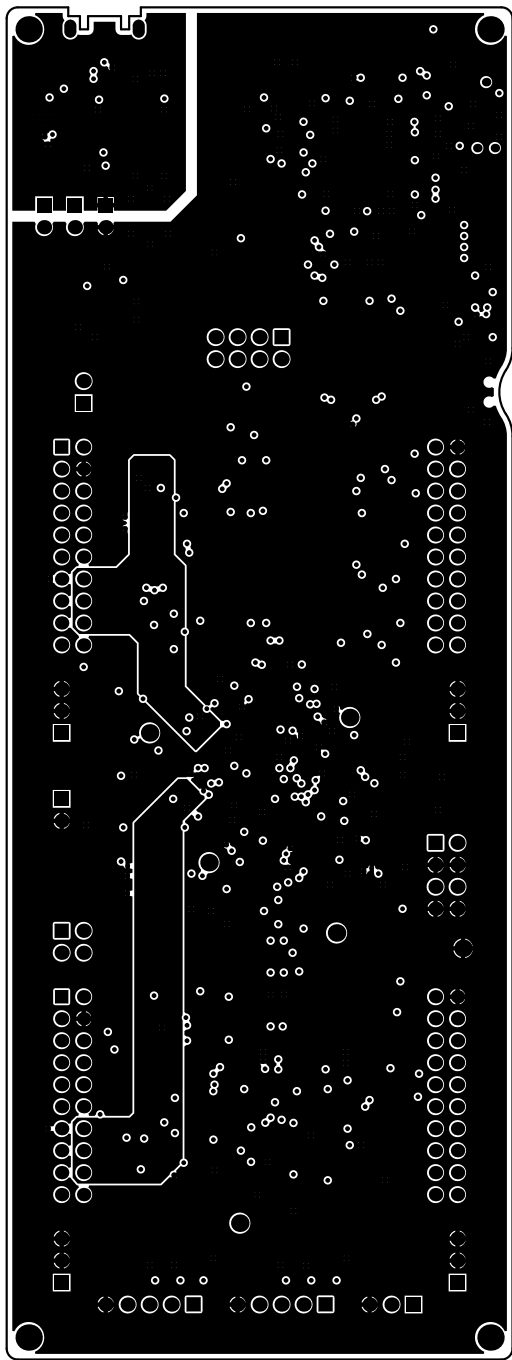
ALL ARTWORK VIEWED FROM TOP SIDE	BOARD #: MCU025	REV: A	SUN REV: Not In VersionControl
LAYER NAME = Top OverlayInformation	TID #: N/A		
PLOT NAME = Top Overlay	GENERATED : 4/13/2018 9:01:05 AM		TEXAS INSTRUMENTS



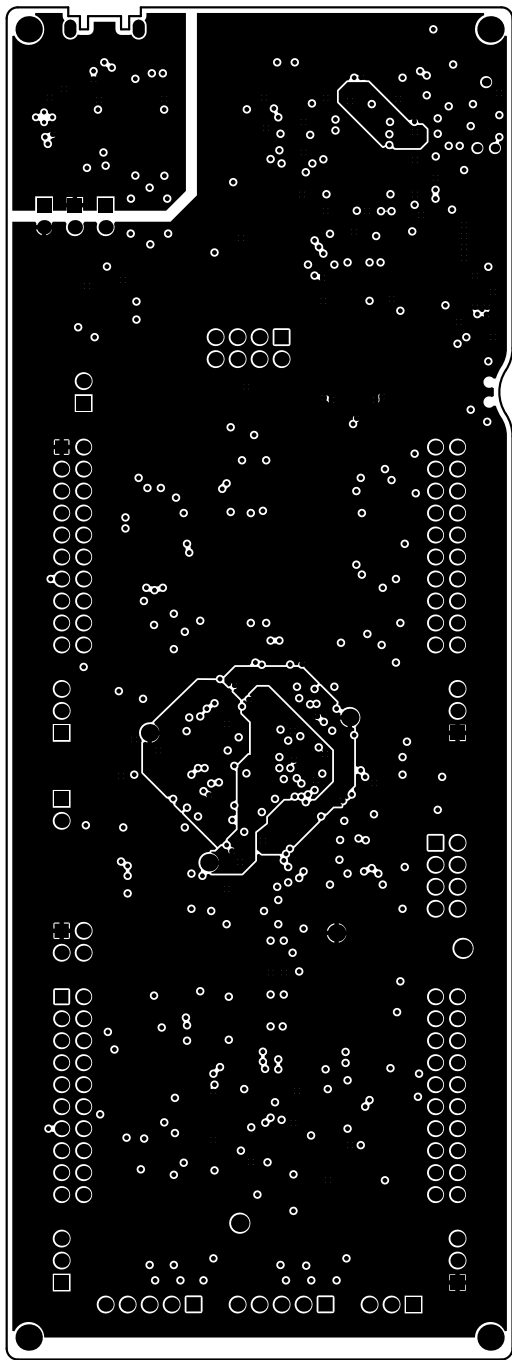
ALL ARTWORK VIEWED FROM TOP SIDE	BOARD #: MCU025	REV: A	SUN REV: Not In VersionControl
LAYER NAME = Top Solder Mask	TID #: N/A		
PLOT NAME = Top Solder Mask	GENERATED : 4/13/2018 9:01:06 AM		TEXAS INSTRUMENTS



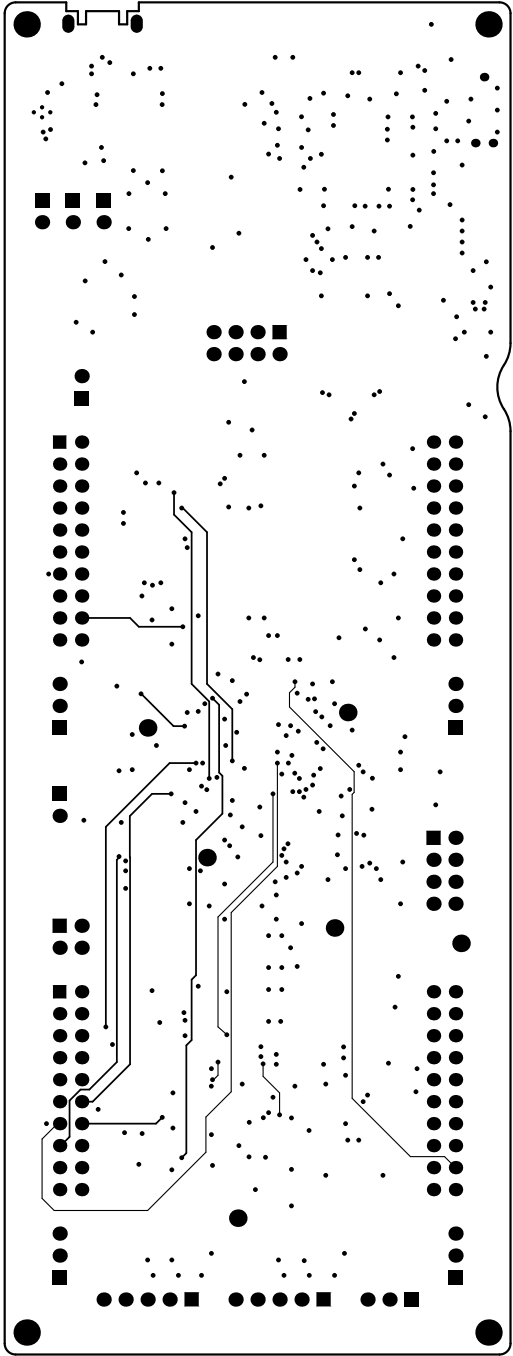
ALL ARTWORK VIEWED FROM TOP SIDE	BOARD #: MCU025	REV: A	SUN REV: Not In VersionControl
LAYER NAME = Top Layer	TID #: N/A		
PLOT NAME = Top Layer	GENERATED : 4/13/2018 9:01:07 AM		TEXAS INSTRUMENTS



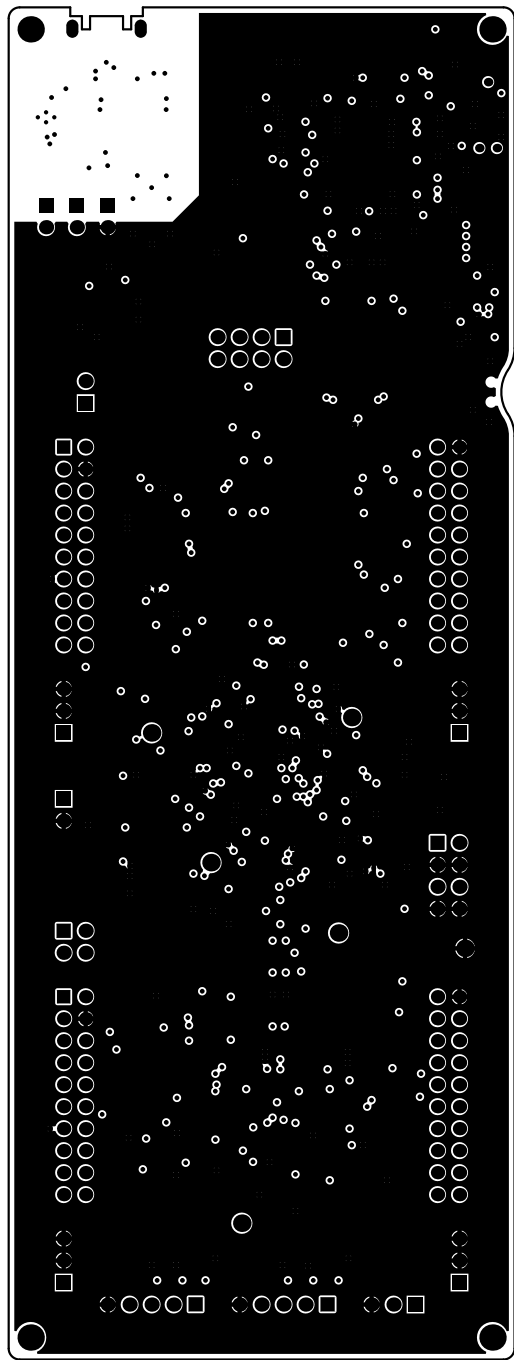
ALL ARTWORK VIEWED FROM TOP SIDE	BOARD #: MCU025	REV: A	SUN REV: Not In VersionControl
LAYER NAME = 0 ND Gerber Information	TID #: N/A		
PLOT NAME = Signal 1	GENERATED : 4/13/2018 9:01:09 AM		TEXAS INSTRUMENTS



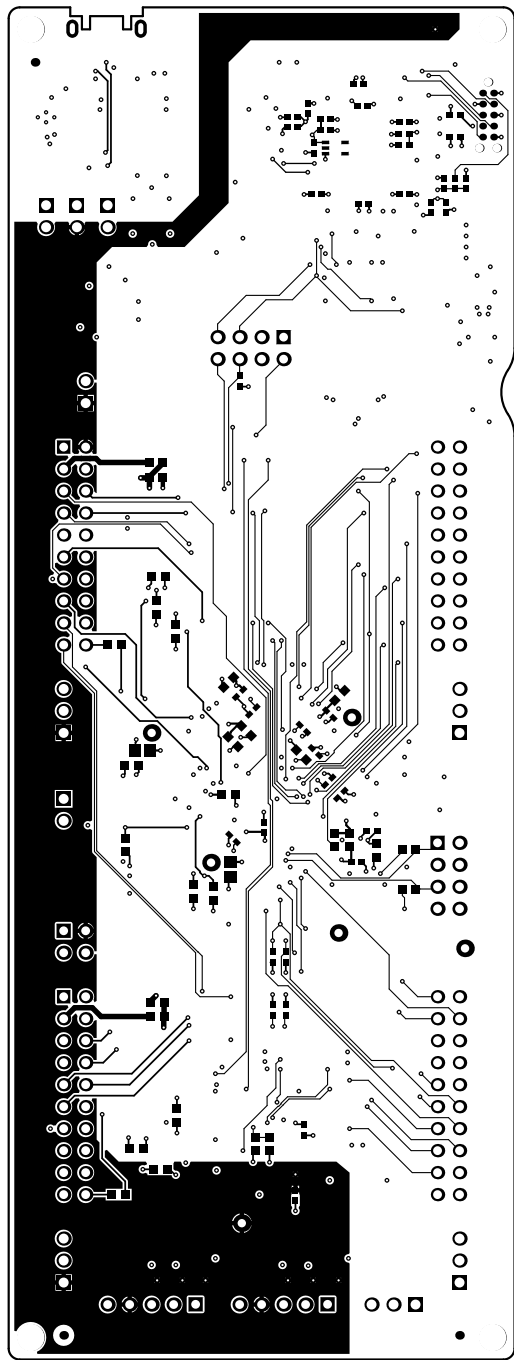
ALL ARTWORK VIEWED FROM TOP SIDE	BOARD #: MCU025	REV: A	SUN REV: Not In VersionControl
LAYER NAME = MR Gerber Information	TID #: N/A		
PLOT NAME = Signal 2	GENERATED : 4/13/2018 9:01:10 AM		TEXAS INSTRUMENTS



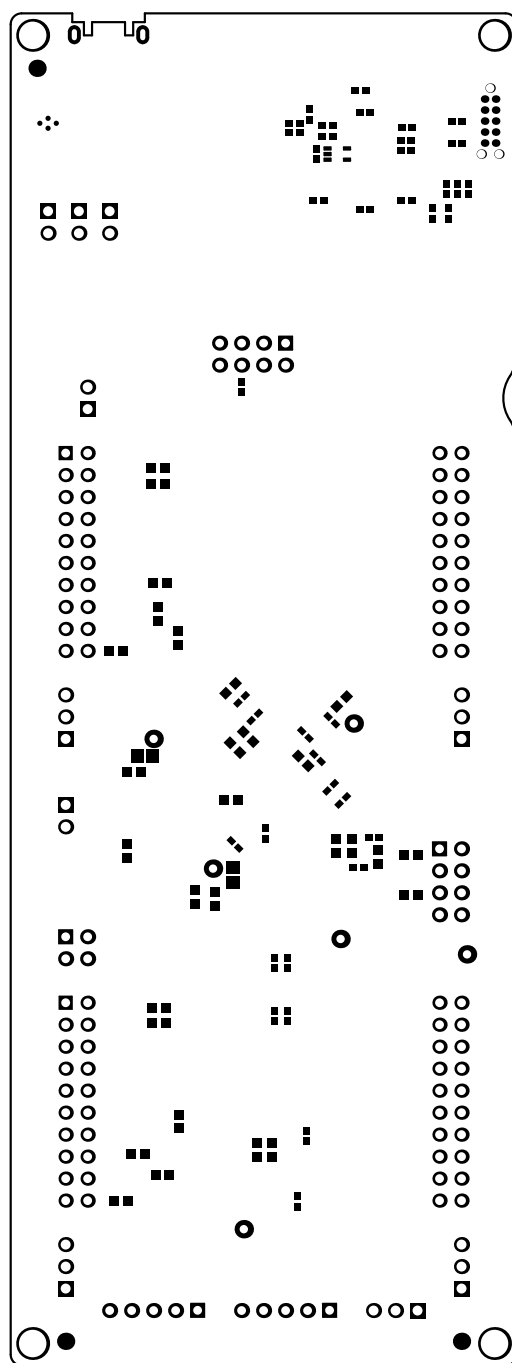
ALL ARTWORK VIEWED FROM TOP SIDE	BOARD #: MCU025	REV: A	SUN REV: Not In VersionControl
LAYER NAME = Middle Signal 3	TID #: N/A		
PLOT NAME = Signal 3	GENERATED : 4/13/2018 9:01:11 AM		TEXAS INSTRUMENTS



ALL ARTWORK VIEWED FROM TOP SIDE	BOARD #: MCU025	REV: A	SUN REV: Not In VersionControl
LAYER NAME = 0ND2 Gerber Information	TID #: N/A		
PLOT NAME = Signal 4	GENERATED : 4/13/2018 9:01:12 AM		TEXAS INSTRUMENTS

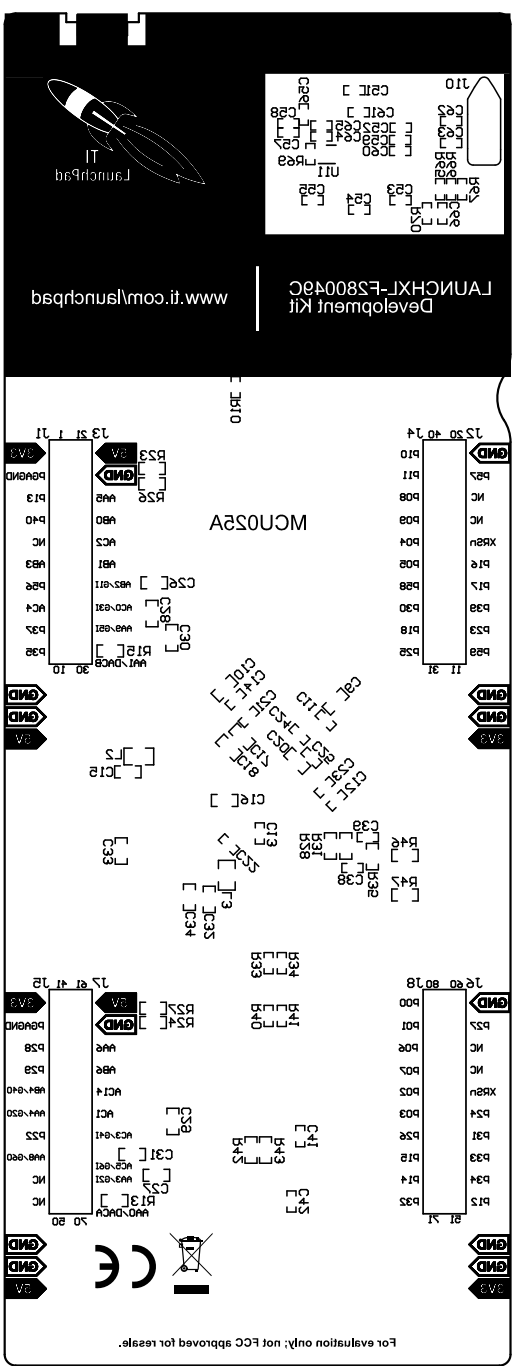


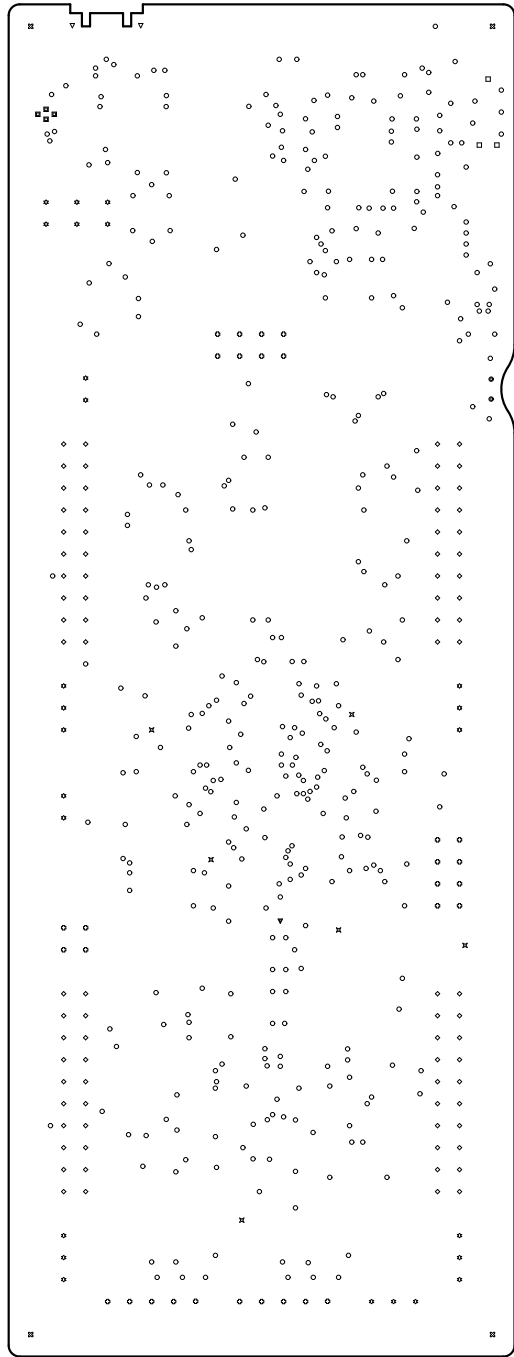
ALL ARTWORK VIEWED FROM TOP SIDE	BOARD #: MCU025	REV: A	SUN REV: Not In VersionControl
LAYER NAME = Bot6or6gnah	TID #: N/A		
PLOT NAME = Bottom Layer	GENERATED : 4/13/2018 9:01:14 AM		TEXAS INSTRUMENTS



ALL ARTWORK VIEWED FROM TOP SIDE	BOARD #: MCU025	REV: A	SUN REV: Not In VersionControl
LAYER NAME = Bottom Solder Mask Information	TID #: N/A		
PLOT NAME = Bottom Solder Mask	GENERATED : 4/13/2018 9:01:15 AM		TEXAS INSTRUMENTS

ALL ARTWORK VIEWED FROM TOP SIDE	BOARD #: MCU025	REV: A	SUN REV: Not In VersionControl
LAYER NAME = Bottom Overlay Bottom OverlayInformation	TID #: N/A		
PLOT NAME = Bottom Overlay	GENERATED : 4/13/2018 9:01:16 AM		TEXAS INSTRUMENTS

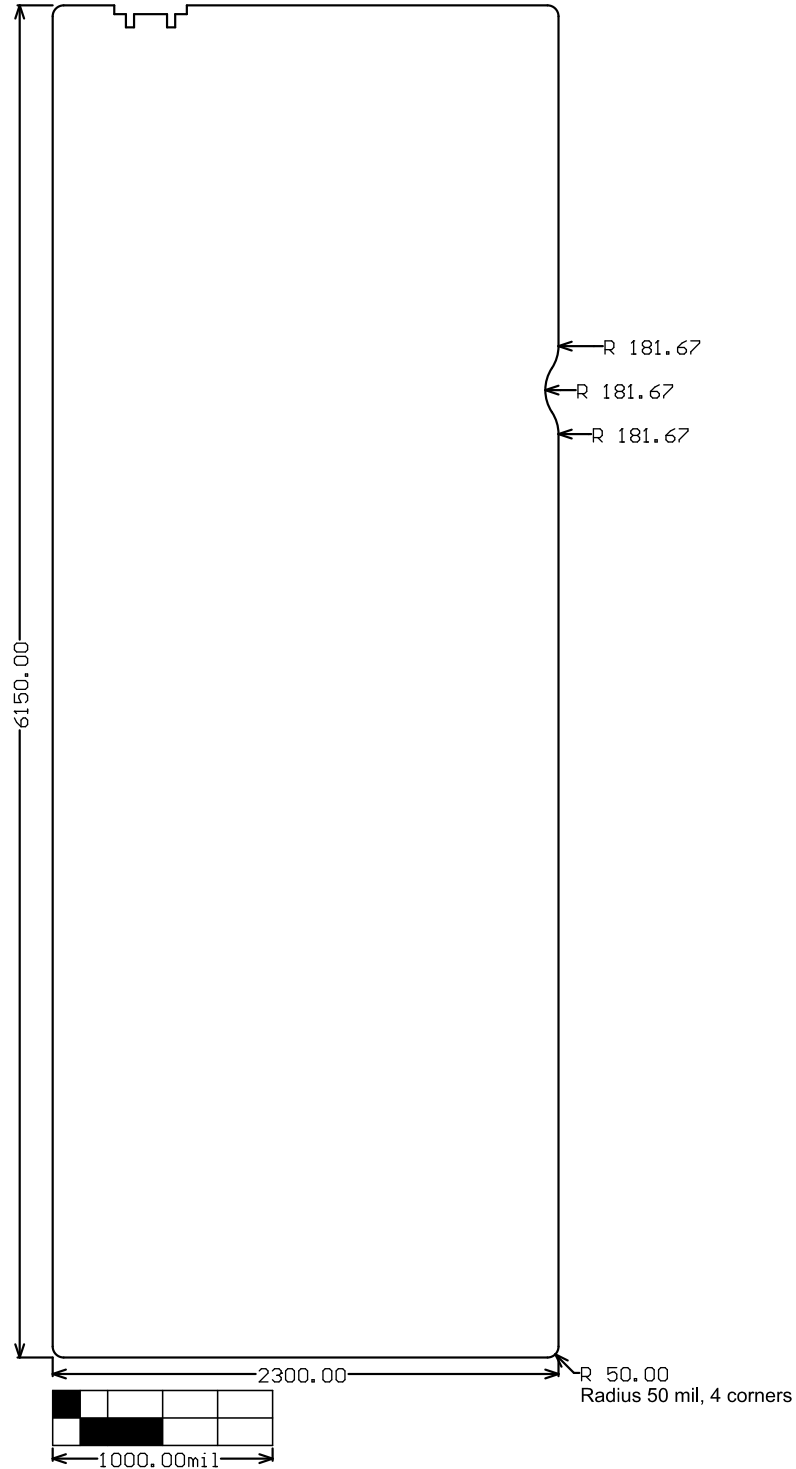




Symbol	Quantity	Finished Hole Size	Plated	Hole Type	Drill Layer Pair	Hole Tolerance
⊙	2	35.43mil (0.900mm)	NPTH	Round	Top Signal - Bottom Signal	+/-5.00mil
□	3	39.00mil (0.991mm)	NPTH	Round	Top Signal - Bottom Signal	
⊗	4	125.00mil (3.175mm)	NPTH	Round	Top Signal - Bottom Signal	
■	4	7.87mil (0.200mm)	PTH	Round	Top Signal - Bottom Signal	
▼	1	10.00mil (0.254mm)	PTH	Round	Top Signal - Bottom Signal	
○	404	10.00mil (0.254mm)	PTH	Round	Top Signal - Bottom Signal	
⊗	6	37.99mil (0.965mm)	PTH	Round	Top Signal - Bottom Signal	
⊕	30	40.00mil (1.016mm)	PTH	Round	Top Signal - Bottom Signal	
◇	80	40.16mil (1.020mm)	PTH	Round	Top Signal - Bottom Signal	
☆	25	45.28mil (1.150mm)	PTH	Round	Top Signal - Bottom Signal	
▽	2	23.62mil (0.600mm)	PTH	Slot	Top Signal - Bottom Signal	
	561 Total					

Slot definitions : Routed Path Length = Calculated from tool start centre position to tool end centre position.
Hole Length = Routed Path Length + Tool Size = Slot length as defined in the PCB layout

ALL ARTWORK VIEWED FROM TOP SIDE	BOARD #: MCU025	REV: A	SUN REV: Not In VersionControl
LAYER NAME = Drill Drawing	TID #: N/A		
PLOT NAME = Drill Drawing	GENERATED : 4/13/2018 9:01:18 AM		TEXAS INSTRUMENTS



ALL ARTWORK VIEWED FROM TOP SIDE	BOARD #: MCU025	REV: A	SUN REV: Not In VersionControl
LAYER NAME = M21 Board Dimensions	TID #: N/A		
PLOT NAME = Board Dimensions	GENERATED : 4/13/2018 9:01:20 AM		TEXAS INSTRUMENTS