

# **Load Sharing Concepts: Implementation for Large-Signal Applications**

*Kristoffer Flores, Xavier Ramus*
*High-Speed Products*

## **ABSTRACT**

Selecting a suitable large-signal swing operational amplifier driver for instrumentation or test and measurement applications can be challenging. In addition to developing the necessary theoretical background for load sharing, this report provides bench results to demonstrate the implementation and benefits of load sharing and output paralleling.

## **Contents**

1	What Constitutes a Large Signal? .....	2
2	Load Sharing Amplifiers .....	3
3	Load Sharing Amplifiers and Distortion Performance .....	7
4	THS3091 Test Circuits and Load Sharing Performance .....	9
5	Conclusion .....	12

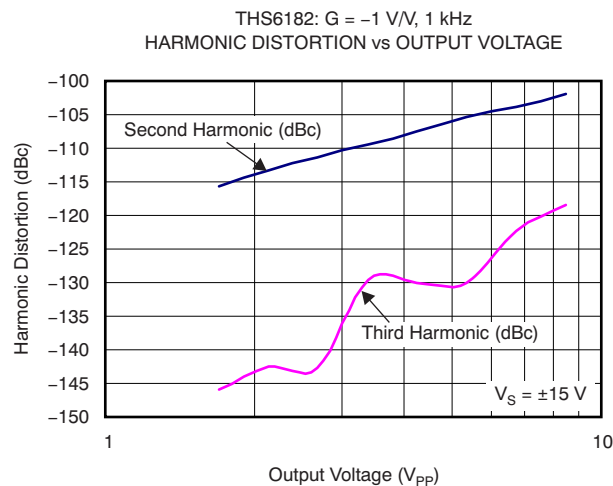
## **List of Figures**

1	1-kHz Harmonic Distortion vs. Output Voltage (THS6182).....	2
2	Load Sharing Conceptual Block Diagram .....	3
3	Two THS3091 Amplifiers in Load Sharing Configuration.....	4
4	Simplified Load Sharing Circuit .....	5
5	Example of Mismatched Amplifier Output Voltages Producing Unbalanced Amplifier Currents .....	6
6	Difference in Amplifier Currents for Two Load Sharing THS3091 Amplifiers vs Series Output Resistor.....	7
7	Harmonic Distortion vs. Load Resistance Graph from OPA695 Data Sheet.....	8
8	Reference THS3091 and THS3091 Load Sharing Test Configurations .....	9
9	32-MHz Sine Wave Output (Gain = 5 V/V, Signal Amplitude Referred to Amplifier Output), Single THS3091 Circuit Configuration .....	10
10	32-MHz Sine Wave Output (Gain = 5 V/V, Signal Amplitude Referred to Amplifier Output), Two THS3091 Amplifiers in Load Sharing Configuration .....	10
11	64-MHz Sine Wave Output (Gain = 5 V/V, Signal Amplitude Referred to Amplifier Output), Single THS3091 Circuit Configuration .....	11
12	64-MHz Sine Wave Output (Gain = 5 V/V, Signal Amplitude Referred to Amplifier Output), Two THS3091 Amplifiers in Load Sharing Configuration .....	11
13	Harmonic Distortion vs Frequency, Single THS3091 Circuit Configuration.....	12
14	Harmonic Distortion vs Frequency, Two THS3091 Amplifiers in Load Sharing Configuration .....	12

## 1 What Constitutes a Large Signal?

Most operational amplifier data sheets define *large signal* as any output signal that swings greater than  $2 V_{PP}$  for  $\pm 5\text{-V}$  amplifiers and  $5 V_{PP}$  for  $\pm 15\text{-V}$  amplifiers. However, the performance that is specified as *large signal* depends on the intended application as well as the internal architecture of the specific device. For example, a low-voltage,  $+5\text{-V}$ , fully-differential, voltage-feedback architecture analog-to-digital converter (ADC) driver amplifier such as the [THS4521](#) specifies a  $2\text{-}V_{PP}$  large-signal bandwidth because  $2 V_{PP}$  is a common ADC analog input range. On the other hand, a high-voltage,  $+28\text{-V}$ , current-feedback architecture, high output power line driver device such as the [THS6204](#) specifies large-signal performance for  $4\text{-}V_{PP}$  to  $20\text{-}V_{PP}$  output.

In fact, the output voltage swing of an amplifier can affect the bandwidth by more than 50% at  $20\text{-}V_{PP}$  output compared to a small-signal ( $200\text{ mV}_{PP}$ ) bandwidth as a direct result of slew rate limitation or loading. For a detailed discussion on the parameters affected by the output voltage swing, refer to the application note *Large-Signal Specifications for High-Voltage Line Drivers* ([SBOA126](#)), available for download from the [TI website](#). As a first-order rule, distortion performance is also degraded by 6 dB for second-harmonic distortion and 12 dB for third-harmonic distortion every time the signal doubles. This behavior is shown in [Figure 1](#) for a 1-kHz signal using the THS6182.



**Figure 1. 1-kHz Harmonic Distortion vs. Output Voltage (THS6182)**

Slew rate, output voltage swing, and output current are key operational amplifier parameters to consider for large signals applications, in particular when targeting low distortion as key design parameter. As a reminder, here is a brief summary of these three specific parameters and the respective relationships to bandwidth, distortion, and amplifier architecture.

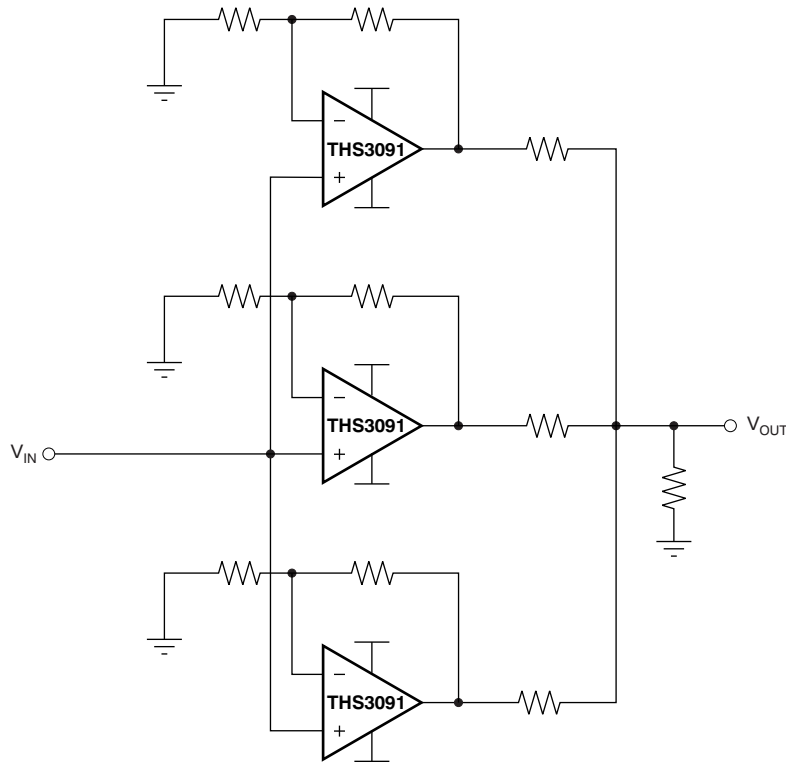
1. Slew rate is directly related to the large-signal bandwidth of an operational amplifier. Slew rate limitation may also be a factor in the distortion of the amplifier. As a rule of thumb, to be able to support 80 dBc for a given frequency, the amplifier achievable slew rate must be 20x the slew rate requirement to support the signal at that frequency.
2. The amplifier output current sourcing and sinking ability into the load determine the output voltage swing range of the device. As the load current increases, distortion suffers. Additionally, high-speed large signal swings into a capacitive load require the amplifier to quickly charge and discharge the load. Depending on the load capacitance, the limited amplifier current sourcing and sinking ability may lead to a lower effective slew rate into the capacitive load.
3. The amplifier output is distorted as it approaches the output voltage swing range as a result of compression because the transistor swing is getting too close to the voltage rail.

In high voltage swing applications, where an operational amplifier is pushed to drive close to its supply rail, it is possible to drive several identical operational amplifiers in parallel and combine the outputs to achieve higher bandwidth and lower distortion. The remainder of this application report develops this concept of load sharing, and demonstrates how this technique can be used to reduce current sourcing and sinking requirements in the amplifier.

## 2 Load Sharing Amplifiers

### 2.1 Concepts

The fundamental concept of load sharing is to drive a load using two or more of the same operational amplifiers. Each amplifier is driven by the same source. [Figure 2](#) shows three [THS3091](#) amplifiers sharing the same load.

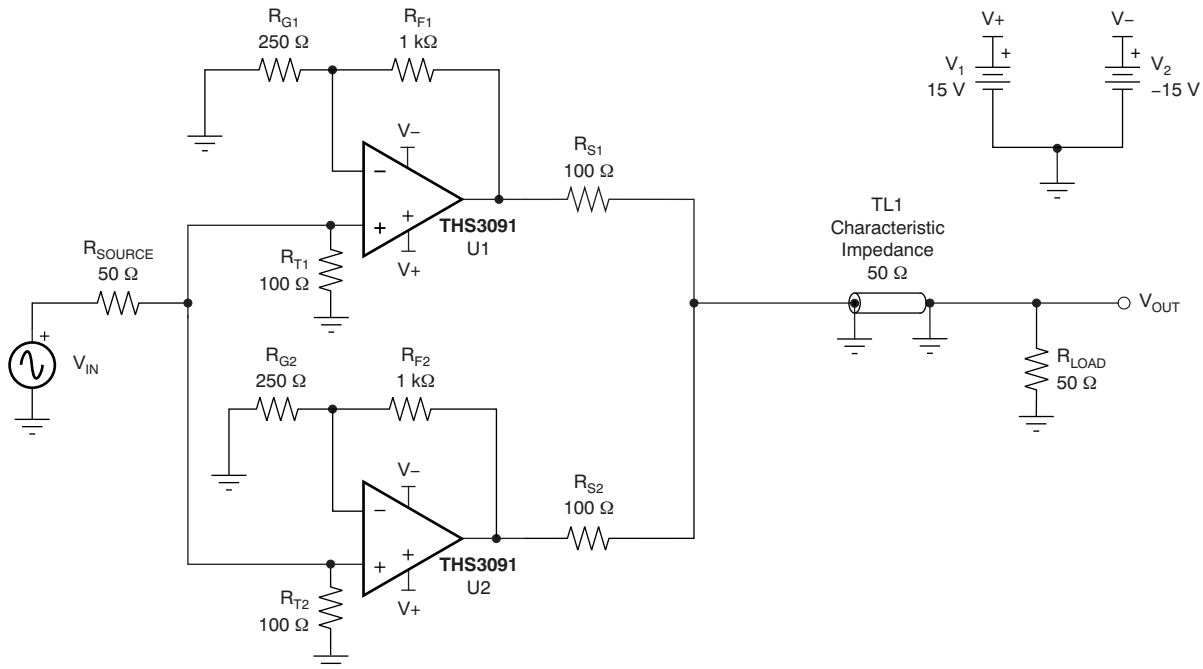


**Figure 2. Load Sharing Conceptual Block Diagram**

This concept effectively reduces the current load of each amplifier by  $1/N$ , where  $N$  is the number of amplifiers.

The balance of this report focuses on selection of component values and demonstrated performance improvements.

Figure 3 shows two THS3091 devices configured in a typical load sharing configuration.



**Figure 3. Two THS3091 Amplifiers in Load Sharing Configuration**

In this example, each THS3091 is configured in a noninverting gain of +5 V/V with the two noninverting inputs tied to a common input signal,  $V_{IN}$ . Several items are worth noting:

- Each output has 100- $\Omega$  resistors in series. This configuration provides matching to the 50- $\Omega$  load. Looking from the load, then, both resistors appear to be in parallel, presenting a 50- $\Omega$  matched impedance to the 50- $\Omega$  load through the transmission line.
- The matched load 50- $\Omega$  impedance minimizes reflections at the load end of the transmission line. This reduced reflection, however, comes at the expense of 6-dB attenuation of the signal that reaches the load.
- The matched input impedance is realized with two 100- $\Omega$  resistance that appear to be in parallel with the 50- $\Omega$  source.

For applications where back or double termination is not required or desired, a non-zero resistor on each amplifier output is highly recommended; the resistors help to balance the current load so that each amplifier provides the same current. Because both amplifiers are low-impedance, this configuration also minimizes the tendency of one amplifier driving the other amplifier, as could be the case if the output offset voltages were different.

The next section focuses on the dc offset contribution that results in unequal load current distribution. Differences in gain from one amplifier to the next because of mismatched resistors also leads to imbalanced output voltages and load currents.

Note that the topic of gain mismatch is not developed in this report, but may need to be considered, depending on the final application.

## 2.2 Output DC Offset

One guideline for selecting the value of the series output resistors can be determined by analyzing the circuit of Figure 3. The goal of load sharing amplifiers is for the current load of each amplifier to be reduced by sharing the load current requirement. This method requires that neither amplifier supplies the majority of the load current and that neither amplifier sources current into or sinks current from the output of the other amplifier. If these conditions were to occur, the circuit would not work at all, and the purpose of the load sharing approach is defeated entirely.

Note that on one hand, the current requirement for a given amplifier has been reduced, but the amplifier must support the full voltage swing. This approach only relaxes the driving capability requirement of the driver and increases the pool of amplifiers to select from. This increased selection pool further allows the design to achieve higher bandwidth than would otherwise have been possible with monolithic amplifiers.

Unequal load currents can result when load sharing amplifier outputs are mismatched in voltage. One source of mismatch is output-referred offset voltage. The worst-case, output-referred offset voltage can be calculated using Equation 1.

$$V_{OS\_RTO} = |V_{OS}| \cdot \left(1 + \frac{R_F}{R_G}\right) + |I_{B+}| \cdot R_{NE} \cdot \left(1 + \frac{R_F}{R_G}\right) + |I_{B-}| \cdot R_F \quad (1)$$

Where  $V_{OS}$  is the input offset voltage,  $I_{B+}$  is the noninverting input bias current,  $I_{B-}$  is the inverting bias current, and  $R_{NE}$  is the equivalent resistance looking out of the noninverting terminal.

For the THS3091, the maximum input offset voltage is 4 mV; the maximum noninverting and inverting input bias currents are both 20  $\mu$ A. Looking out of the noninverting terminal of either amplifier, the equivalent resistance is  $R_{T1} \parallel R_{T2} \parallel R_{SOURCE} = 25 \Omega$ . Using these values in Equation 1, the output-referred offset voltage is calculated as Equation 2 shows.

$$V_{OS\_RTO} = 4 \text{ mV} \cdot \left(1 + \frac{1 \text{ k}\Omega}{250 \Omega}\right) + 20 \mu\text{A} \cdot 25 \Omega \cdot \left(1 + \frac{1 \text{ k}\Omega}{250 \Omega}\right) + 20 \mu\text{A} \cdot 1000 \Omega = 42.5 \text{ mV} \quad (2)$$

For a worst-case analysis, it is typical to presume that the offset can either be positive or negative; consequently, the final output-referred offset voltage is  $\pm 42.5$  mV. For two amplifiers in a load sharing configuration, an offset of  $\pm 42.5$  mV for each amplifier indicates that a voltage as high as 85 mV can be developed between the two outputs at dc, assuming perfectly-matched gain-setting resistors.

Although dual amplifiers should have better matching than single operation amplifier, a dual operational amplifier in a single package approach is not recommended because of limited power-supply rejection (PSR) isolation in the standard dual footprint package. In a dual standard footprint package, the power-supply pins are shared; this configuration could lead to positive feedback on the other amplifier, and result in oscillations. The other issue to consider if looking into a dual operational amplifier in a single package is thermal power dissipation, especially where heavy loads are concerned.

The circuit shown in Figure 3 can be simplified for further analysis as shown in Figure 4. Consider a case where the input to the load sharing amplifiers is at 0 V. Because of the non-ideal offset and bias currents of the amplifiers, the outputs are not 0 V. In the worst-case situation, the output of Amplifier U1 is the positive worst-case, output-referred offset voltage and the output of Amplifier U2 is the negative worst-case offset.

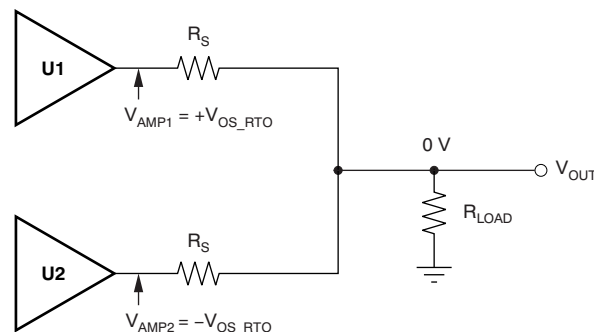


Figure 4. Simplified Load Sharing Circuit

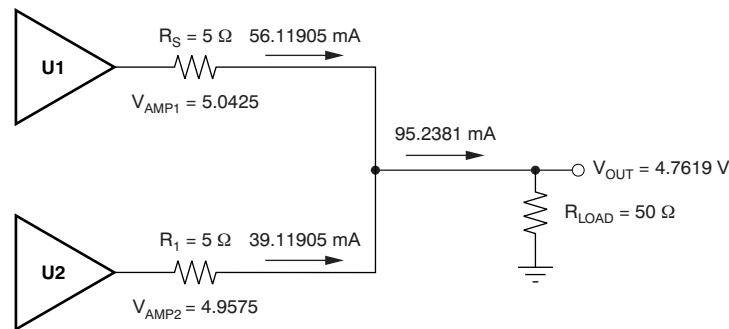
With matched series output resistors ( $R_S$ ), the voltage at the load ( $V_{OUT}$ ) is 0 V. The current from Amplifier 1 is simply  $+V_{OS\_RTO}/R_S$  and the current from Amplifier 2 is  $-V_{OS\_RTO}/R_S$ .

Amplifier U1 is sourcing current into the output of Amplifier U2 without generating any signal on the load. This event is not a desired behavior; at best, this configuration would dissipate power, and at worst, it could damage the amplifiers.  $R_S$  is therefore necessary in order to limit the current that one amplifier attempts to drive into the other in this worst-case condition.

The difference in the two currents is given by [Equation 3](#).

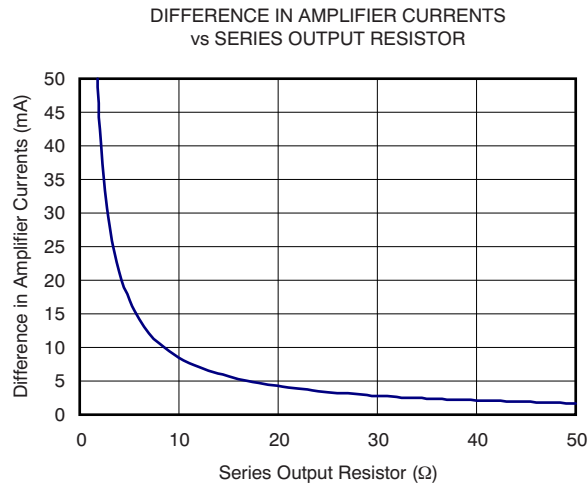
$$I_{DIFF} = \frac{V_{OS\_RTO}}{R_S} - \left( -\frac{V_{OS\_RTO}}{R_S} \right) = 2 \cdot \frac{V_{OS\_RTO}}{R_S} \quad (3)$$

The effect of this difference in current is best illustrated with an example. If  $R_S$  is chosen to be  $5 \Omega$  for a configuration with two THS3091 amplifiers in a load sharing configuration, the worst-case difference in the two amplifier output currents is 17 mA ( $= 2 \bullet 42.5 \text{ mV} / 5 \Omega$ ). During normal operation, if the nominal output of each amplifier in [Figure 5](#) is 5 V, the worst case is that the output of Amplifier U1 is 5.0425 V and the output of Amplifier 2 is 4.9575 V (or the other way around) because of the mismatched offset voltages. [Figure 5](#) shows the resulting currents. As expected, Amplifier U1 supplies 17 mA more current to the load than does Amplifier U2. The total current to the load is the same, but one amplifier always appears to be hotter than the other, and will be more susceptible to failure. In this example, Amplifier U1 also shows harmonic distortion that is worse than expected.



**Figure 5. Example of Mismatched Amplifier Output Voltages Producing Unbalanced Amplifier Currents**

The difference in amplifier currents can be plotted against the series resistor,  $R_S$ . Figure 6 shows the difference in amplifier currents for two load sharing THS3091 amplifiers versus the series resistor,  $R_S$ . With an  $R_S$  of 10  $\Omega$ , the difference in amplifier currents is reduced to 4.25 mA.



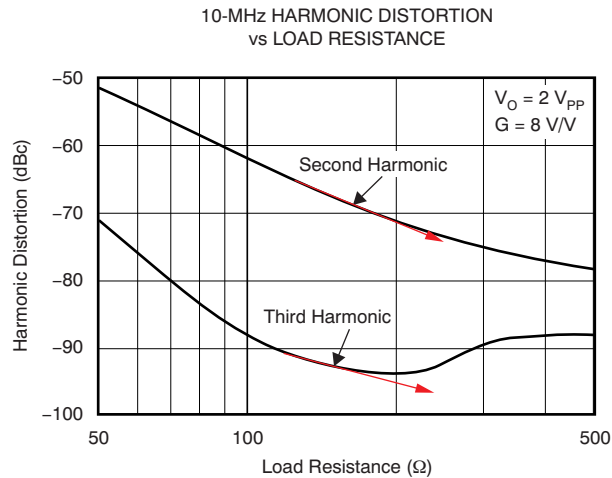
**Figure 6. Difference in Amplifier Currents for Two Load Sharing THS3091 Amplifiers vs Series Output Resistor**

### 3 Load Sharing Amplifiers and Distortion Performance

In addition to providing higher output current drive to the load, the load sharing configuration can also provide improved distortion performance. In many cases, an operational amplifier shows better distortion performance as the load current decreases (that is, for higher resistive loads) until the feedback resistor starts to dominate the current load. In a load sharing configuration of  $N$  amplifiers in parallel, the equivalent current load that each amplifier drives is  $1/N$  times the total load current. For example, in a two-amplifier load sharing configuration with matching resistance (refer to Figure 3) driving a resistive load,  $R_L$ , each series resistance is  $2 \bullet R_L$  and each amplifier drives  $2 \bullet R_L$ .

A convenient indicator of whether an op amp will function well in a load sharing configuration is the characteristic performance graph of harmonic distortion versus load resistance. Such graphs can be found in most of TI's high-speed amplifier data sheets. These graphs can be used to obtain a general sense of whether or not an amplifier will show improved distortion performance in load sharing configurations.

For example, [Figure 7](#) (from the [OPA695 product data sheet](#)) provides a figure of 10-MHz harmonic distortion versus load resistance. This graph shows 9-dB improvement in second-order harmonic performance with a load of 200  $\Omega$  compared to a 100- $\Omega$  load. Third-order harmonic performance also shows an improvement of about 6 dB. Consequently, the OPA695 may be a good candidate for a load sharing configuration of two OPA695 amplifiers driving a 100- $\Omega$  load. The apparent load to each OPA695 will be double the shared resistor load, or 200  $\Omega$ .



**Figure 7. Harmonic Distortion vs. Load Resistance Graph from OPA695 Data Sheet**

It is important to note, however, that harmonic distortion does not always improve monotonically as the load resistance increases. [Figure 7](#) shows that for the OPA695, for example, third-harmonic distortion reaches a minimum at a 200- $\Omega$  load. With a 500- $\Omega$  load, third-harmonic distortion is virtually the same as that observed with a 100- $\Omega$  load, while second-harmonic distortion continues to improve. Distortion performance also varies with the output signal swing, typically degrading as the output swing increases, though not always monotonically.

Product data sheets that do not include harmonic distortion versus load resistance graphs usually include distortion versus frequency graphs for different load resistances. The typical distortion performance at a specific frequency for two different loads may also be included in the Electrical Specifications table. For example, the [THS3091 data sheet](#) includes typical distortion performance graphs for 100- $\Omega$  and 1-k $\Omega$  loads. The distortion performance at 10 MHz for a 2-V/V gain configuration and 2- $V_{pp}$  output are also included in the Electrical Characteristics table for this device, and are given in [Table 1](#). The data show that second-harmonic distortion performance is better with a 1-k $\Omega$  load than with a 100- $\Omega$  load; however, third-harmonic distortion is better with a 100- $\Omega$  load than with a 1-k $\Omega$  load.

Suppose the THS3091 is chosen to drive a 20- $V_{pp}$  signal into a 100- $\Omega$  load (in other words, a double-terminated, 50- $\Omega$  cable) and load sharing is being considered. No definitive conclusion can be reached from the available 100- $\Omega$  and 1-k $\Omega$  performance data and additional characterization would be required.

**Table 1. Harmonic Distortion for 100- $\Omega$  and 1-k $\Omega$  Loads (from THS3091 Product Data Sheet)**

PARAMETER	CONDITIONS	THS3091				UNIT
		TYP	MIN/MAX OVER TEMPERATURE			
			+25°C	0°C to 70°C	-40°C to +85°C	
Second Harmonic Distortion	G = 2, R <sub>F</sub> = 1.21 k $\Omega$ , V <sub>O</sub> = 2 V <sub>pp</sub> , f = 10 MHz	R <sub>L</sub> = 100 $\Omega$	66			dBc
		R <sub>L</sub> = 1 k $\Omega$	77			dBc
Third Harmonic Distortion	G = 2, R <sub>F</sub> = 1.21 k $\Omega$ , V <sub>O</sub> = 2 V <sub>pp</sub> , f = 10 MHz	R <sub>L</sub> = 100 $\Omega$	74			dBc
		R <sub>L</sub> = 1 k $\Omega$	69			dBc



#### 4 THS3091 Test Circuits and Load Sharing Performance

As is the case in every design, lab evaluation is the best gauge of performance. Two test circuits are shown in Figure 8, one for a single THS3091 amplifier driving a double-terminated, 50-Ω cable and one with two THS3091 amplifiers in a load sharing configuration. In the load sharing configuration, the two 100-Ω series output resistors act in parallel to provide 50-Ω back-matching to the 50-Ω cable.

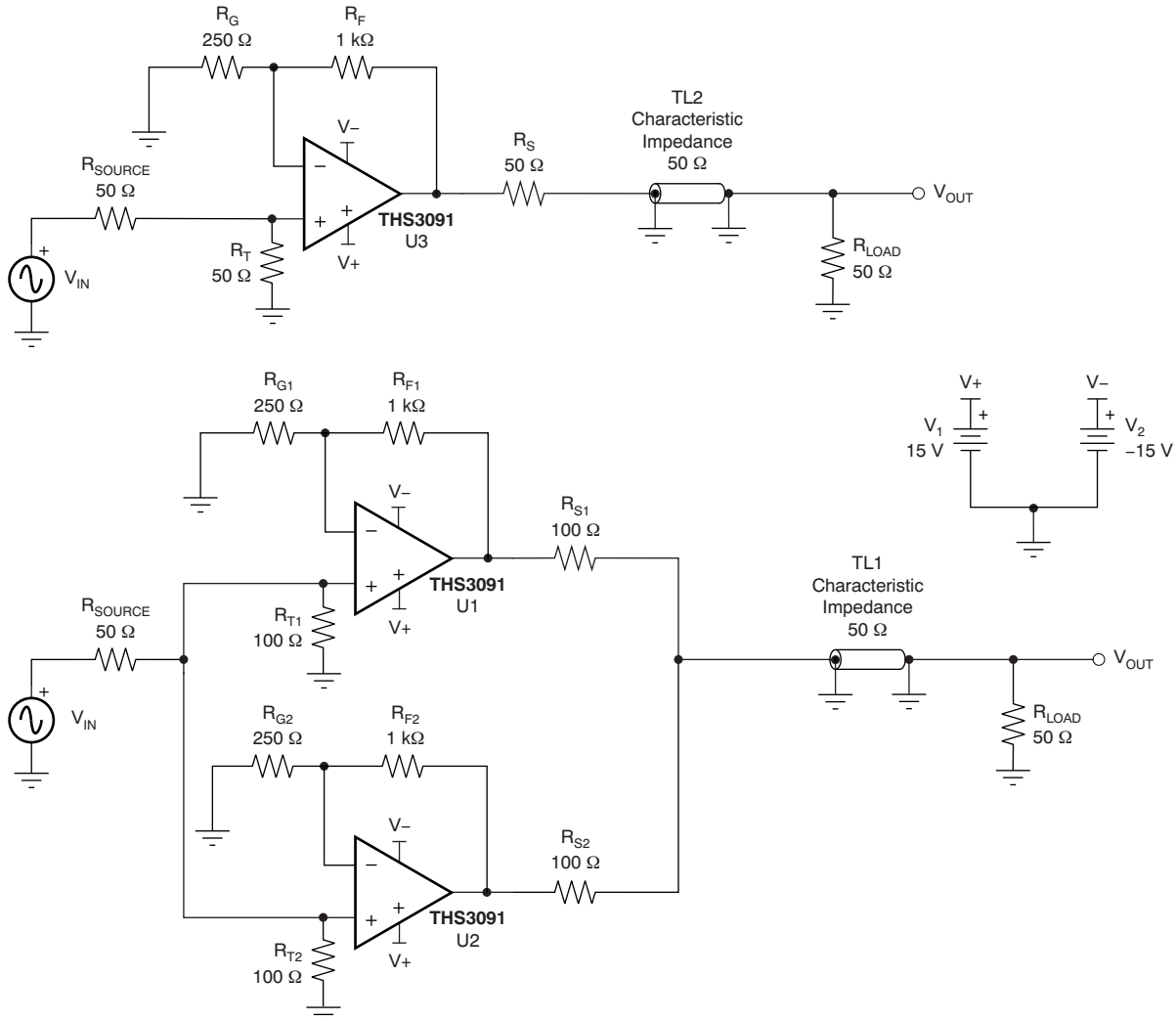


Figure 8. Reference THS3091 and THS3091 Load Sharing Test Configurations

Figure 9 and Figure 10 show the 32-MHz, 18-V<sub>PP</sub> sine wave output amplitudes for the single THS3091 configuration and the load sharing configuration, respectively, measured using an oscilloscope. An ideal sine wave is also included as a visual reference (the dashed red line).

Figure 9 shows visible distortion in the single THS3091 output. In the load sharing configuration of Figure 10, however, no obvious degradation is visible.

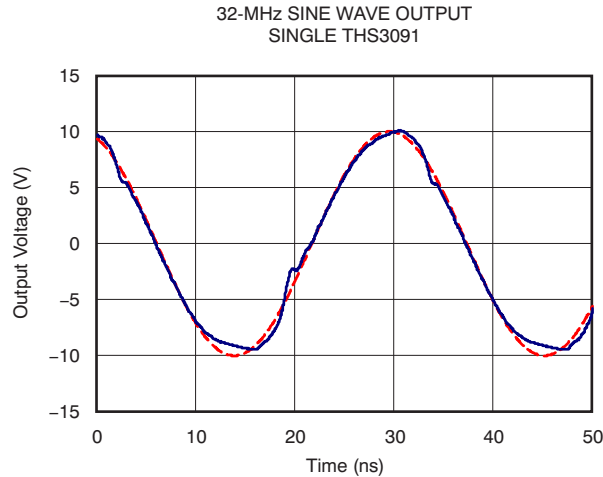


Figure 9. 32-MHz Sine Wave Output (Gain = 5 V/V, Signal Amplitude Referred to Amplifier Output), Single THS3091 Circuit Configuration

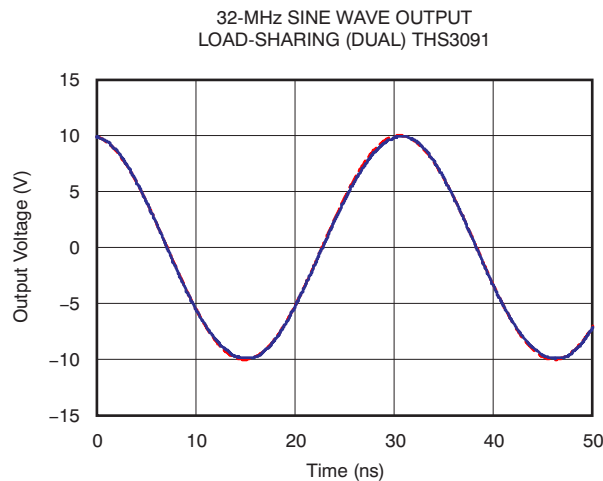
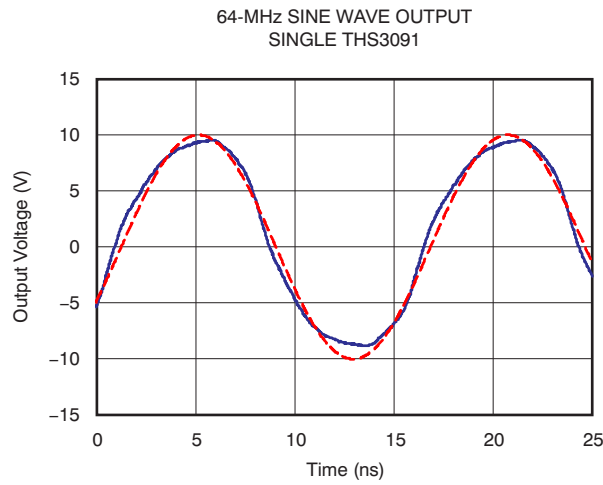
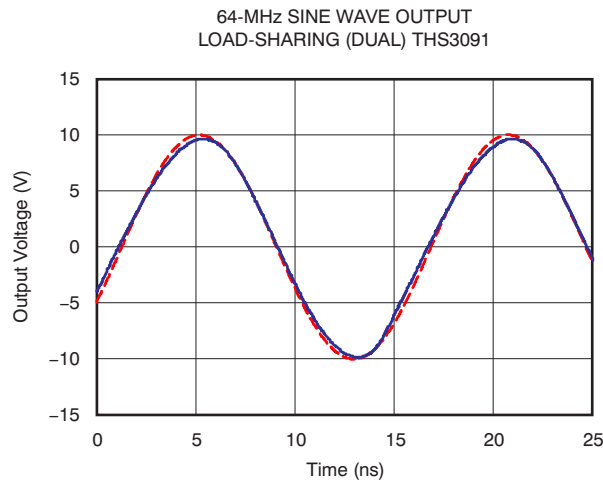


Figure 10. 32-MHz Sine Wave Output (Gain = 5 V/V, Signal Amplitude Referred to Amplifier Output), Two THS3091 Amplifiers in Load Sharing Configuration

Figure 11 and Figure 12 show the 64-MHz sine wave outputs of the two configurations from Figure 8. While the single THS3091 output is clearly distorted in Figure 11, the output of the load sharing configuration in Figure 12 shows only minor deviations from the ideal sine wave.

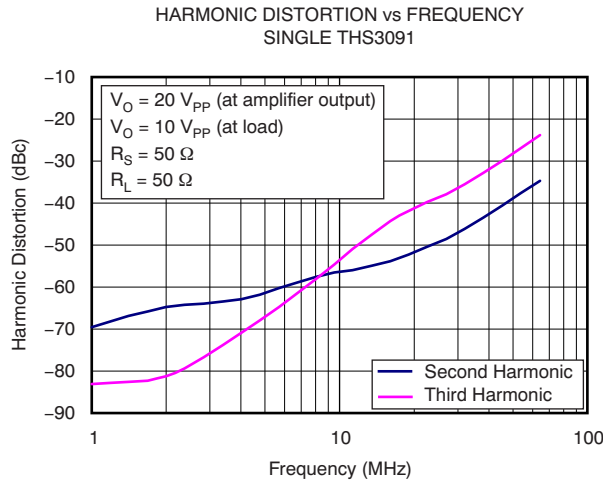


**Figure 11. 64-MHz Sine Wave Output (Gain = 5 V/V, Signal Amplitude Referred to Amplifier Output), Single THS3091 Circuit Configuration**

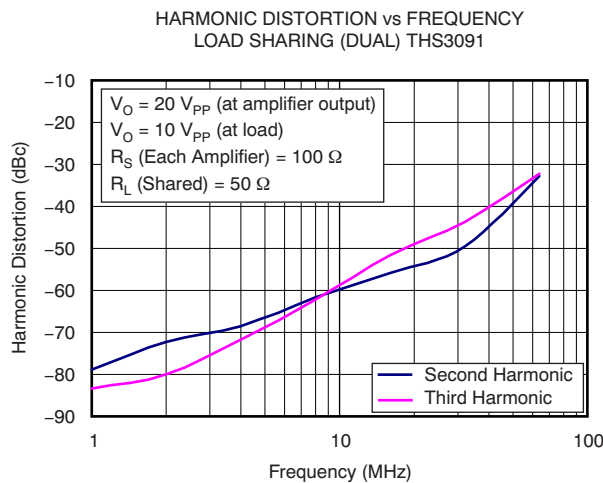


**Figure 12. 64-MHz Sine Wave Output (Gain = 5 V/V, Signal Amplitude Referred to Amplifier Output), Two THS3091 Amplifiers in Load Sharing Configuration**

The improved output waveform as a result of load sharing is quantified in the harmonic distortion versus frequency graphs shown in [Figure 13](#) and [Figure 14](#) for the single amplifier and load sharing configurations, respectively. While second-harmonic distortion remains largely the same between the single and load sharing cases, third-harmonic distortion is improved by approximately 8 dB in the frequency range between 20 MHz to 64 MHz.



**Figure 13. Harmonic Distortion vs Frequency, Single THS3091 Circuit Configuration**



**Figure 14. Harmonic Distortion vs Frequency, Two THS3091 Amplifiers in Load Sharing Configuration**

## 5 Conclusion

The operational amplifier limitations imposed by slew rate and output current must be considered when an application requires large output signal swings. Output current is an especially important factor. This application note reviewed and explained a load sharing method to increase the output current ability of an amplifier and potentially improve distortion performance.

## IMPORTANT NOTICE

Texas Instruments Incorporated and its subsidiaries (TI) reserve the right to make corrections, modifications, enhancements, improvements, and other changes to its products and services at any time and to discontinue any product or service without notice. Customers should obtain the latest relevant information before placing orders and should verify that such information is current and complete. All products are sold subject to TI's terms and conditions of sale supplied at the time of order acknowledgment.

TI warrants performance of its hardware products to the specifications applicable at the time of sale in accordance with TI's standard warranty. Testing and other quality control techniques are used to the extent TI deems necessary to support this warranty. Except where mandated by government requirements, testing of all parameters of each product is not necessarily performed.

TI assumes no liability for applications assistance or customer product design. Customers are responsible for their products and applications using TI components. To minimize the risks associated with customer products and applications, customers should provide adequate design and operating safeguards.

TI does not warrant or represent that any license, either express or implied, is granted under any TI patent right, copyright, mask work right, or other TI intellectual property right relating to any combination, machine, or process in which TI products or services are used. Information published by TI regarding third-party products or services does not constitute a license from TI to use such products or services or a warranty or endorsement thereof. Use of such information may require a license from a third party under the patents or other intellectual property of the third party, or a license from TI under the patents or other intellectual property of TI.

Reproduction of TI information in TI data books or data sheets is permissible only if reproduction is without alteration and is accompanied by all associated warranties, conditions, limitations, and notices. Reproduction of this information with alteration is an unfair and deceptive business practice. TI is not responsible or liable for such altered documentation. Information of third parties may be subject to additional restrictions.

Resale of TI products or services with statements different from or beyond the parameters stated by TI for that product or service voids all express and any implied warranties for the associated TI product or service and is an unfair and deceptive business practice. TI is not responsible or liable for any such statements.

TI products are not authorized for use in safety-critical applications (such as life support) where a failure of the TI product would reasonably be expected to cause severe personal injury or death, unless officers of the parties have executed an agreement specifically governing such use. Buyers represent that they have all necessary expertise in the safety and regulatory ramifications of their applications, and acknowledge and agree that they are solely responsible for all legal, regulatory and safety-related requirements concerning their products and any use of TI products in such safety-critical applications, notwithstanding any applications-related information or support that may be provided by TI. Further, Buyers must fully indemnify TI and its representatives against any damages arising out of the use of TI products in such safety-critical applications.

TI products are neither designed nor intended for use in military/aerospace applications or environments unless the TI products are specifically designated by TI as military-grade or "enhanced plastic." Only products designated by TI as military-grade meet military specifications. Buyers acknowledge and agree that any such use of TI products which TI has not designated as military-grade is solely at the Buyer's risk, and that they are solely responsible for compliance with all legal and regulatory requirements in connection with such use.

TI products are neither designed nor intended for use in automotive applications or environments unless the specific TI products are designated by TI as compliant with ISO/TS 16949 requirements. Buyers acknowledge and agree that, if they use any non-designated products in automotive applications, TI will not be responsible for any failure to meet such requirements.

Following are URLs where you can obtain information on other Texas Instruments products and application solutions:

### Products

Audio	<a href="http://www.ti.com/audio">www.ti.com/audio</a>
Amplifiers	<a href="http://amplifier.ti.com">amplifier.ti.com</a>
Data Converters	<a href="http://dataconverter.ti.com">dataconverter.ti.com</a>
DLP® Products	<a href="http://www.dlp.com">www.dlp.com</a>
DSP	<a href="http://dsp.ti.com">dsp.ti.com</a>
Clocks and Timers	<a href="http://www.ti.com/clocks">www.ti.com/clocks</a>
Interface	<a href="http://interface.ti.com">interface.ti.com</a>
Logic	<a href="http://logic.ti.com">logic.ti.com</a>
Power Mgmt	<a href="http://power.ti.com">power.ti.com</a>
Microcontrollers	<a href="http://microcontroller.ti.com">microcontroller.ti.com</a>
RFID	<a href="http://www.ti-rfid.com">www.ti-rfid.com</a>
OMAP Mobile Processors	<a href="http://www.ti.com/omap">www.ti.com/omap</a>
Wireless Connectivity	<a href="http://www.ti.com/wirelessconnectivity">www.ti.com/wirelessconnectivity</a>

### Applications

Communications and Telecom	<a href="http://www.ti.com/communications">www.ti.com/communications</a>
Computers and Peripherals	<a href="http://www.ti.com/computers">www.ti.com/computers</a>
Consumer Electronics	<a href="http://www.ti.com/consumer-apps">www.ti.com/consumer-apps</a>
Energy and Lighting	<a href="http://www.ti.com/energy">www.ti.com/energy</a>
Industrial	<a href="http://www.ti.com/industrial">www.ti.com/industrial</a>
Medical	<a href="http://www.ti.com/medical">www.ti.com/medical</a>
Security	<a href="http://www.ti.com/security">www.ti.com/security</a>
Space, Avionics and Defense	<a href="http://www.ti.com/space-avionics-defense">www.ti.com/space-avionics-defense</a>
Transportation and Automotive	<a href="http://www.ti.com/automotive">www.ti.com/automotive</a>
Video and Imaging	<a href="http://www.ti.com/video">www.ti.com/video</a>

TI E2E Community Home Page

[e2e.ti.com](http://e2e.ti.com)

Mailing Address: Texas Instruments, Post Office Box 655303, Dallas, Texas 75265  
Copyright © 2011, Texas Instruments Incorporated