

LED Driver Based on UCC28060 Interleaved ACDC Single Stage Flyback

Application Report



Literature Number: SLUA625

October 2011

LED Driver Based on UCC28060 Interleaved ACDC Single Stage Flyback

Tony Huang

Power management products/Field Applications

ABSTRACT

UCC28060 can be implemented in an ACDC single stage solution with transition mode interleaved Flyback topology. This note will discuss the design considerations and give a practical design example.

Contents

1	Single stage LED lighting Introduction	3
2	Design considerations	4
2.1	Transition mode single stage analysis	4
2.1.1	With “CC” load	9
2.1.2	With “LED” load	11
2.1.3	With “CR” load	13
2.2	Ripple current cancellation of UCC28060 single stage	13
2.3	Interleaved single stage design considerations for the UCC28060.....	13
3	Loop stability analysis	15
4	A practical interleaved single stage LED driver design based on the UCC28060	17
5	150W Interleaved Single Stage Design and Test Results	21
5.1	Test Data.....	22
5.1.1	Efficiency versus Line	22
5.1.2	Power Factor versus Line Voltage.....	22
5.1.3	Output Peak to Peak Ripple Voltage	23
6	Conclusion:	23

Figures

Figure 1.	Primary side switching current and input average current waveforms.....	4
Figure 2.	THD Vs. K ($K=V_p/nV_o$).....	6
Figure 3.	Secondary side peak current and average current waveforms.....	7
Figure 4.	Secondary side parameters Vs. “K” with “CC” load.....	10
Figure 5.	A typical V/I characteristic of a single die LED.....	11
Figure 6.	Dynamic model for an LED load.....	11
Figure 7.	Secondary side parameters Vs “K” with “LED” load ($C_{out}=1000\mu F$, $R_{LED}=3R$).....	12
Figure 8.	The average model of the single stage.....	15
Figure 9.	The small signal model of the single stage.....	15
Figure 10.	The LED current closed loop control implementation.....	16
Figure 11.	Input RMS current and its 1st Harmonic at 85VAC & 265VAC.....	17
Figure 12.	Closed-loop compensation with 85V line input.....	18
Figure 13.	Closed-loop compensation with 265V line input.....	19
Figure 14.	A 60W LED driver overall schematic.....	20
Figure 15.	150W Interleaved Single Date Schematic.....	21
Figure 16.	150W Efficiency versus input voltage and load.....	22
Figure 17.	Power factor versus input voltage and load.....	22
Figure 18.	Output peak to peak ripple voltage, 2.6Vpp.....	23

Tables

Table 1.	Parameter table for primary side single stage.....	6
Table 2.	Parameter table for secondary side.....	9

1 Single stage LED lighting Introduction

A recent trend in LED lighting is to implement the driver with a single stage offline ACDC. A single stage ACDC employs only one controller and one Flyback power stage to implement an isolated PFC (power factor correction) solution. The benefit is a very low BOM cost and high efficiency.

The usual approach is to employ a transition mode Flyback topology for increased efficiency, as well as a regulated constant t_{on} (switch on-time) to implement the PFC. This solution can significantly decrease the turn-on power loss not only in the main MOSFET, using valley voltage mode, but also the turn-off power loss in the secondary side rectifier with ZCS (zero current switching).

However, the one phase transition mode, with boundary current mode in the transformer, produces much higher input and output ripple current than continuous current mode. This significantly reduces EMI performance and efficiency, so that a bigger EMI filter is necessary. The higher the power rating of the ACDC, the higher the ripple current and EMI filter volume. Moreover, very high peak currents in a one phase single stage LED driver may increase the risk and cost on the main MOSFET and output rectifier.

An interleaved transition mode PFC controller such as the UCC28060, can be used to implement an interleaved, two phase single stage Flyback, which significantly decreases the ripple current due to the ripple current cancellation effect. Thereby the input EMI filter and output capacitor volume can be decreased greatly. It also allows for higher flexibility in selecting the MOSFET, rectifier etc. because they only handle half the peak current of the original single phase.

2 Design considerations

2.1 Transition mode single stage analysis

Using the following parameter definitions and analysis of the transition mode single stage flyback can be performed.

AC input voltage (RMS): V_{AC} ; Line AC frequency: f_{AC} ; Rated input power: P_{in}

Output voltage: V_o ; Transformer turns ratio: $n=N_p/N_s$;

Let: $\omega = 2\pi f_{AC}$;

On the primary side, it's essential that the transition mode single stage can maintain the switching current and input average current as shown in figure1.

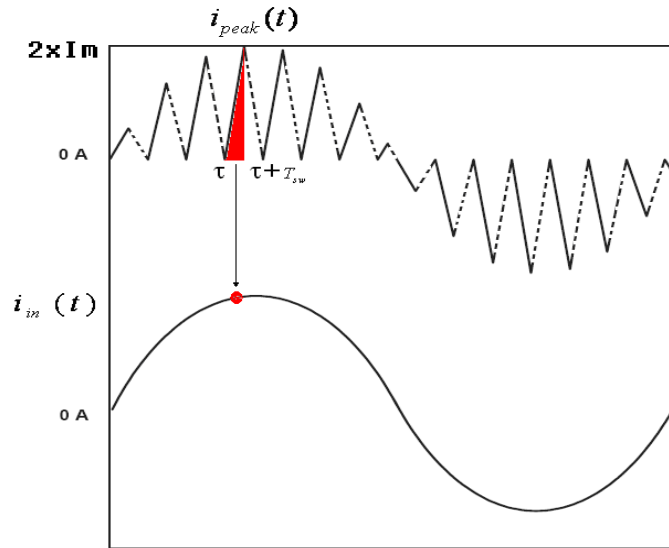


Figure 1. Primary side switching current and input average current waveforms.

During the high frequency switching cycle $t \in [\tau, \tau + T_{sw}]$, the duty cycle and primary side peak current should follow the equations below:

$$D(\omega t) = \frac{nV_o}{nV_o + \sqrt{2}V_{AC}\text{Sin}(\omega t)}; i_{peak}(\omega t) = \frac{\sqrt{2}V_{AC}t_{ON}}{L_p}\text{Sin}(\omega t)$$

Let: $K = \frac{\sqrt{2}V_{AC}}{nV_o}$, And $I_m = \frac{\sqrt{2}V_{AC}}{2L_p}t_{ON}$, then the duty cycle is:

$$D(\omega t) = \frac{1}{1 + K \times \text{Sin}(\omega t)}; \text{ And peak current } i_{peak}(\omega t) = 2I_m\text{Sin}(\omega t)$$

As a result, during the high frequency switching cycle $t \in [\tau, \tau + T_{sw}]$, the continuous input current can be solved as below:

$$i_{in}(\omega t) = I_m \frac{\sin(\omega t)}{1 + K \times \sin(\omega t)} \quad (\text{Eq.1})$$

Considering a practical design for peak current mode, “K” should be greater than “1”.

The above equation shows the input current isn't a pure sine wave, but contains higher order harmonic elements.

The total input RMS current can be found as below:

$$I_{in} = \sqrt{\frac{\int_0^\pi i_{in}^2(\omega t) d\omega t}{\pi}} = \frac{I_m}{\sqrt{\pi}} \sqrt{\int_0^\pi \frac{\sin^2(\omega t)}{(1 + K \times \sin(\omega t))^2} d\omega t}$$

Then,

$$I_{in} = \frac{I_m}{\sqrt{\pi K}} \sqrt{\pi - 4K + 2 \frac{(2K^2 - 1)}{(K^2 - 1)} \left(K + \frac{\ln(K - \sqrt{K^2 - 1})}{\sqrt{K^2 - 1}} \right)} \quad (\text{Eq.2})$$

Considering the harmonic elements of the input current, the 1st harmonic RMS current would be:

$$I_{1RMS} = \frac{1}{\sqrt{2}} \frac{2}{\pi} \int_0^\pi i_{in}(\omega t) \sin(\omega t) d\omega t = \frac{\sqrt{2}}{\pi} \int_0^\pi I_m \frac{\sin^2(\omega t)}{1 + K \times \sin(\omega t)} d\omega t$$

Then:

$$I_{1RMS} = \frac{\sqrt{2} I_m}{\pi K^2} \left[2K - \pi + \frac{2 \ln(K + \sqrt{K^2 - 1})}{\sqrt{K^2 - 1}} \right] \quad (\text{Eq.3})$$

In practice, most of the input power comes from the input line AC voltage times the 1st harmonic RMS current.

The total harmonic distortion “THD” should be:

$$THD = \sqrt{1 - \frac{2(2K - \pi + 2 \frac{\ln(K + \sqrt{K^2 - 1})}{\sqrt{K^2 - 1}})^2}{\pi K^2 \left[\pi - 4K + \frac{2(2K^2 - 1)}{K^2 - 1} \left(K + \frac{\ln(K - \sqrt{K^2 - 1})}{\sqrt{K^2 - 1}} \right) \right]}} \quad (\text{Eq.4})$$

Figure 1 shows how THD changes with different “K” values.

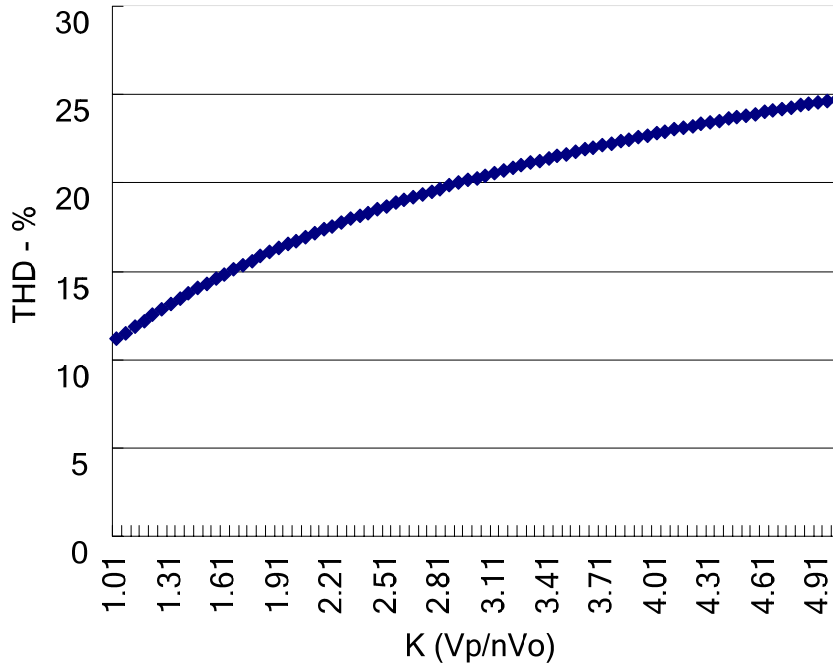


Figure 2. THD Vs. K (K=Vp/nVo)

Figure 2 shows that increasing “K” increases “THD” (total harmonic distortion). Also, the higher the input voltage, the higher the “THD”. The transformer turns ratio, n (n=Np/Ns) should be high enough to allow for a lower “K”.

Then the calculated values for the primary side parameters can be found in table 1.

Table 1. Parameter table for primary side single stage

<i>K</i> (K=1.414xVin/nVout)	<i>I_{1RMS}/I_m</i>	<i>I_{in}/I_m</i>	THD(%)
1.1	0.369906584	0.372508356	11.79836876
1.7	0.294776679	0.298289401	15.30155777
2.3	0.245307257	0.249340574	17.91373988
2.9	0.210200682	0.214517309	19.95998672
3.2	0.196199425	0.200599691	20.83025343
3.35	0.18988264	0.194313938	21.2343145
3.5	0.183963855	0.188420071	21.61978758

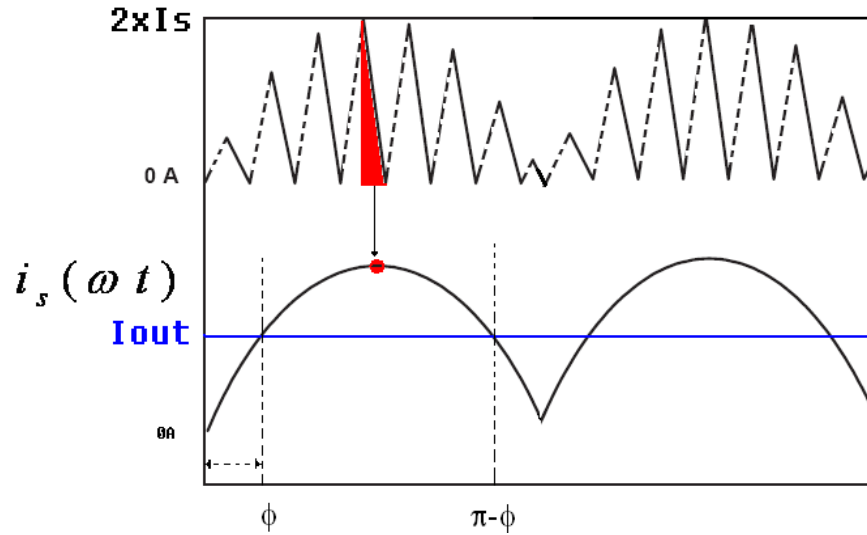


Figure 3. Secondary side peak current and average current waveforms.

On the transformer secondary side, during the high frequency switching cycle $t \in [\tau, \tau + T_{sw}]$, the average output current of the secondary side transformer can be found as below:

$$i_s(\omega t) = I_s \sin(\omega t) [1 - D(\omega t)] = I_s \frac{K \times \sin^2(\omega t)}{1 + K \times \sin(\omega t)}$$

$2 \times I_s$ is the peak current of the secondary side transformer.

Consider a low frequency cycle $\omega t \in [0, \pi]$, during $\omega t \in [\phi, \pi - \phi]$, the output capacitor is being charged, and during $\omega t \in [0, \phi] \cup [\pi - \phi, \pi]$, the output capacitor is being discharged. Then:

$$i_s(\phi) = I_{out} = I_s \frac{K \sin^2 \phi}{1 + K \sin \phi}$$

$$I_{out} \pi = \int_0^\pi i_s(\omega t) d\omega t$$

Then:

$$I_{out} = \frac{I_s}{\pi K} \left[2K - \pi + \frac{2 \ln(K + \sqrt{K^2 - 1})}{\sqrt{K^2 - 1}} \right] \quad (\text{Eq.5})$$

And

$$\frac{\pi \sin^2 \phi}{1 + K \sin \phi} = \frac{[2K - \pi + \frac{2 \ln(K + \sqrt{K^2 - 1})}{\sqrt{K^2 - 1}}]}{K^2} \quad (\text{Eq.6})$$

According to table 2 and figure 4, the approximated rectifier angle “ ϕ ” is 0.72rad.

Obviously the ripple frequency in the secondary is double the line AC frequency. An approximated analysis is to use the 1st harmonic element to estimate the output ripple. Based on this assumption, we can get the results below:

Consider the AC current part, $i_s(t) - I_{out}$, and a doubled AC line frequency, the amplitude of the 1st harmonic element should be:

$$I_{SAC-1} = \frac{2}{\pi} \int_0^{\pi} [I_{out} - i_s(\omega t)] \text{Cos}(2\omega t) d\omega t$$

Then:

$$I_{SAC-1} = \frac{8I_s}{\pi K^3} \left[\frac{2}{3} K^3 - \frac{\pi}{4} K^2 + K - \frac{\pi}{2} + \frac{\text{Ln}(K + \sqrt{K^2 - 1})}{\sqrt{K^2 - 1}} \right] - 2I_{out} \quad (\text{Eq.7})$$

$$\frac{I_{SAC-1}}{I_{out}} = \frac{8}{K^2} \frac{\left[\frac{2}{3} K^3 - \frac{\pi}{4} K^2 + K - \frac{\pi}{2} + \frac{\text{Ln}(K + \sqrt{K^2 - 1})}{\sqrt{K^2 - 1}} \right]}{\left[2K - \pi + \frac{2\text{Ln}(K + \sqrt{K^2 - 1})}{\sqrt{K^2 - 1}} \right]} - 2 \quad (\text{Eq.8})$$

Table 2 and Figure 4 reveals a critical phenomena is the current ratio “ I_{SAC-1}/I_{out} ”, it is almost constant with an approximated value of 0.85.

2.1.1 With “CC” load

The output peak to peak ripple voltage:

$$\frac{U_{p-p}}{I_{out}} = \frac{I_{SAC-1}}{I_{out}} \times \frac{1}{2\pi f_{AC} C_{out}} \approx \frac{0.85}{2\pi f_{AC} C_{out}} \quad (\text{Eq.9})$$

The calculated values for the secondary side parameters for various K values can be found in table 2.

Table 2. Parameter table for secondary side.

<i>K</i> (<i>K</i>=1.414xVin/nVout)	<i>I_s/I_{out}</i>	<i>ϕ</i> (RAD)	<i>U_{p-p}/I_{out}</i> (<i>C</i>=1mF)	<i>I_{SAC-1}/I_{out}</i>
1.1	3.475604	0.7411552	2.352463628	0.886859968
1.7	2.822104	0.7300354	2.267692253	0.854901838
2.3	2.506552	0.7225061	2.206355423	0.831778344
2.9	2.319973	0.7171003	2.15957335	0.814141876
3.5	2.196415	0.7130522	2.122532599	0.800177809

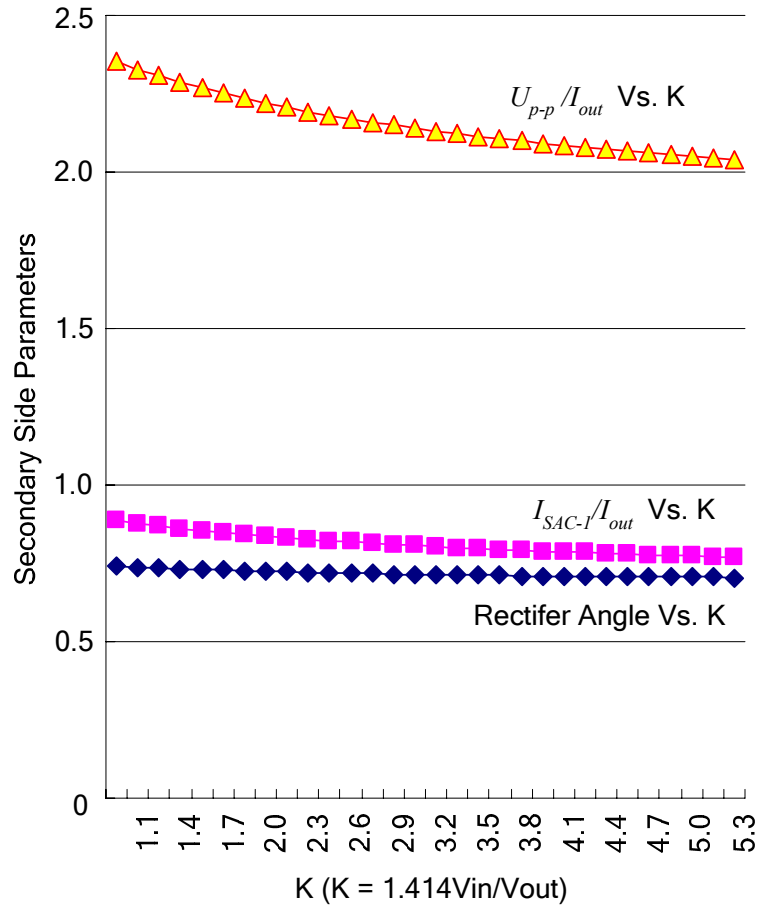


Figure 4. Secondary side parameters Vs. “K” with “CC” load.

With “LED” or “CR” load setup, the ripple current flowing into capacitor “Cout” can be decreased by a part of it flowing into “RLED” or “RL”, which decreases the output ripple voltage significantly. The lower the “RLED” or “RL” resistance, the lower the output ripple voltage.

2.1.2 With “LED” load

A typical “V-I” characteristic of an LED:

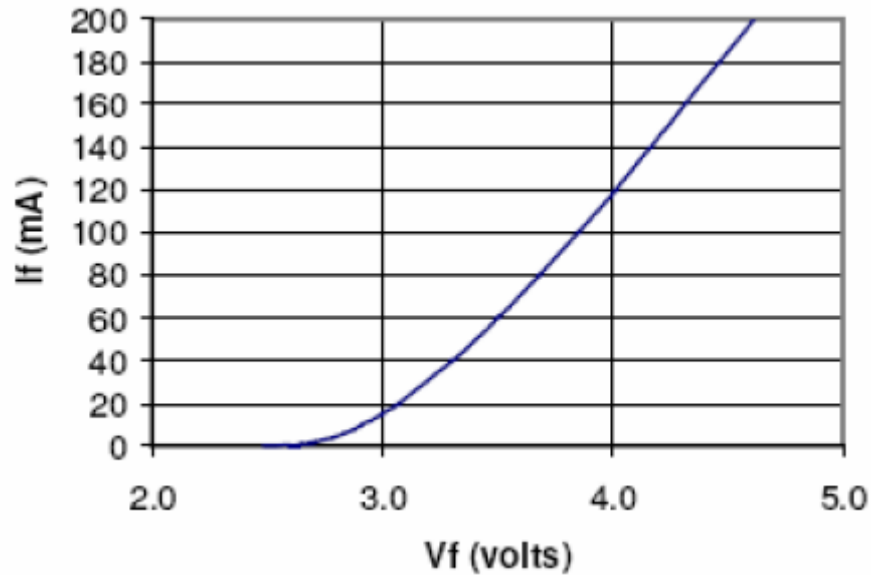


Figure 5. A typical V/I characteristic of a single die LED

$R_{LED} = n_{LED} \frac{\Delta V_{LED}}{\Delta i_{LED}} \Big|_{I_{LED}=I_{out}}$; This represents the slope rate at the working point specified for the light brightness.

“ n_{LED} ” is the quantity of the LEDs in series.

Based on the V/I characteristic, the practical electrical characteristic can be simulated by the circuit below :

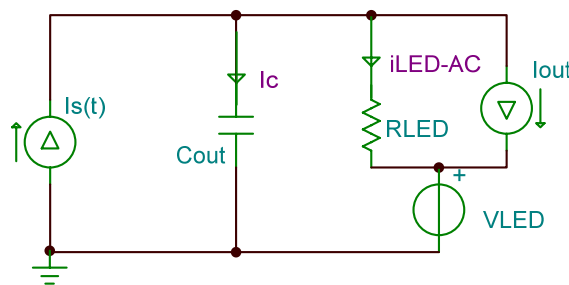


Figure 6. Dynamic model for an LED load

The output peak to peak ripple voltage U_{p-p} should be:

$$\frac{U_{p-p}}{I_{out}} = \frac{I_{SAC-1}}{I_{out}} \times \frac{2R_{LED}}{\sqrt{1+16\pi^2 R_{LED}^2 C_{out}^2 f_{AC}^2}} \approx \frac{1.7R_{LED}}{\sqrt{1+16\pi^2 R_{LED}^2 C_{out}^2 f_{AC}^2}} \tag{Eq.10}$$

With $R_{LED}=3R$ & $C_{out}=1000\mu F$, the secondary side parameters are as shown in Figure 7.

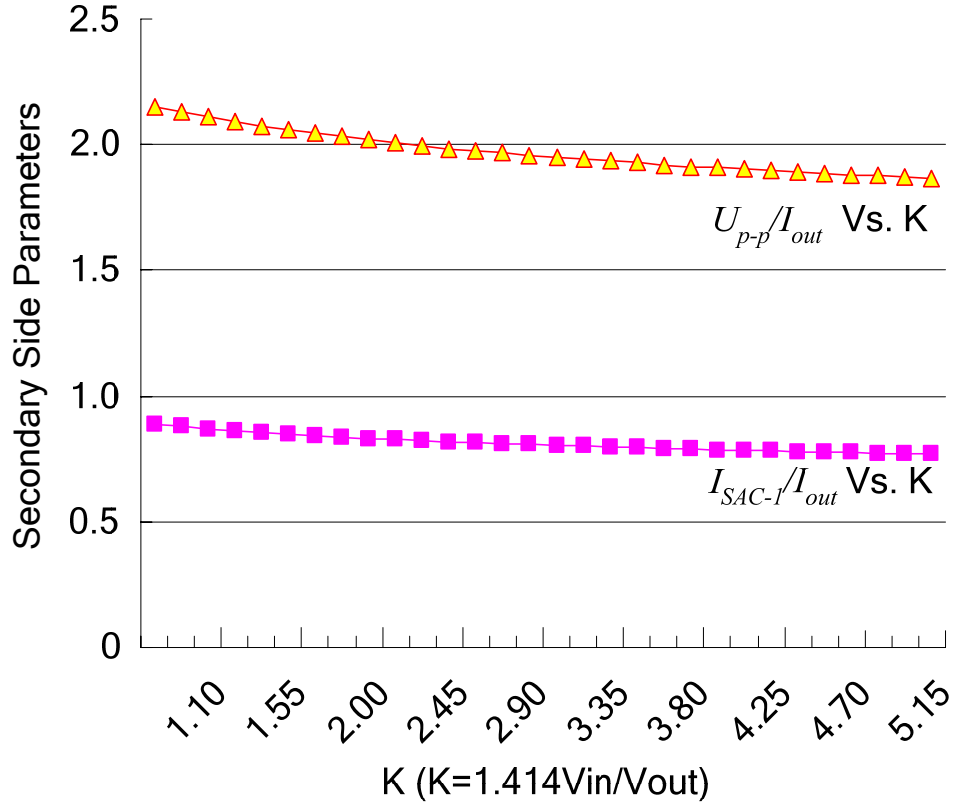


Figure 7. Secondary side parameters Vs “K” with “LED” load ($C_{out}=1000\mu F$, $R_{LED}=3R$)

2.1.3 With “CR” load

Similar to the “LED” load, the output peak to peak ripple voltage will be:

$$\frac{U_{p-p}}{I_{out}} = \frac{I_{SAC-1}}{I_{out}} \times \frac{2R_L}{\sqrt{1+16\pi^2 R_L^2 C_{out}^2 f_{AC}^2}} \approx \frac{1.7R_L}{\sqrt{1+16\pi^2 R_L^2 C_{out}^2 f_{AC}^2}}$$

2.2 Ripple current cancellation of UCC28060 single stage

The UCC28060 employs natural interleaving transition mode control. Two flyback power stages work in transition mode allowing for lower switching power dissipation in the MOSFET and rectifier because of valley voltage switching in MOSFET and zero current turn-off of the secondary side rectifiers, this also results in a better EMI performance. Furthermore, considering the higher input peak current in transition mode than in average mode, UCC28060’s natural interleaving mode, with peak current ripple cancellation, can significantly decrease the current ripple, which benefits the volume reduction of the EMI filter, and also increases the efficiency.

2.3 Interleaved single stage design considerations for the UCC28060

Step 1: Define the input maximum power, AC voltage range and output voltage range:

$$P_{MAX}; V_{ACMIN}; V_{ACMAX}; V_{outMAX}; V_{outMIN}$$

Step 2: Transformer design.

$$K = \frac{\sqrt{2}V_{ACMIN}}{nV_{outMAX}} > 1$$

According to the THD analysis in 2.1, a lower “K” produces a lower “THD”. So for example we can let K=1.1 at low line. Thereby we can get a turns ratio “n” for the transformer.

At low line input:

A. the 1st harmonic RMS current in each phase will be:

$$I_{1RMS} = \frac{P_{MAX}}{2V_{ACMIN}};$$

B. Assuming a minimum operating frequency is “ f_{MIN} ”, then the constant On-Time is

$$t_{on} = \frac{1}{f_{MIN}(1+K)} \quad (\text{Eq.11})$$

According to Eq.3, we can get “ I_m ” as

$$I_m = \frac{I_{peak}}{2} = \frac{\sqrt{2}V_{ACMIN}}{2L_p} t_{on} \quad (\text{Eq.12})$$

Per the above “ t_{on} ” and “ I_m ”, we can find the primary side inductor value “ L_p ”.

Step 3. From the datasheet for the UCC28060:

$$t_{on} = K_T (V_{comp} - 125mv)$$

Using “ t_{on} ” and “ K_T ”, a maximum “ V_{comp} ” at low line can be calculated. An optimized “ K_T ” can be used to set up a suitable “ V_{comp} ”, considering a typical limit value of 4.95V.

A resistor on “TSET” pin of the UCC28060 can configure an optimized “ K_T ”.

Step 4. According to equation 9, the output capacitor can be selected by the pre-decided output low frequency peak to peak ripple voltage:

According to equation 9, or table 2, as input AC Line varies from 85V to 265V, or K varies from “1.1” to “3.4”, assuming an output peak to peak ripple voltage range, then the output capacitor value can be found.

3 Loop stability analysis

Consider the boundary mode, the magnetizing current of the transformer will be discharged fully, and the lossless resistor “Rm” and constant transferred power “P” model can be used to describe the average model per figure 8.

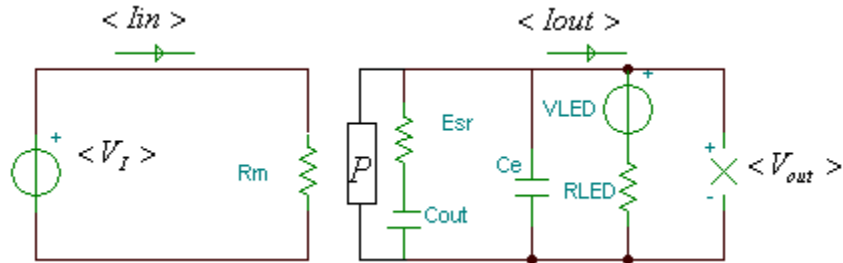


Figure 8. The average model of the single stage

$$\text{Here, } R_m = \frac{2L_p \left(1 + \frac{\langle V_I \rangle}{n \langle V_{out} \rangle}\right)}{t_{on}}; \text{ And } P = \frac{\langle V_I \rangle^2}{R_m}$$

Note, $\langle * \rangle$ means the average value during a switching cycle.

The small signal circuitry can be found as in figure 9:

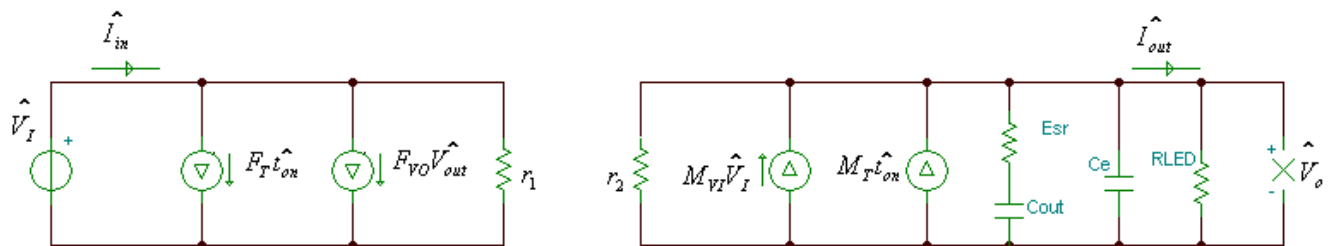


Figure 9. The small signal model of the single stage

And,

$$F_T = \frac{V_I}{2L_p(1 + \frac{V_I}{nV_o})}; \quad F_{VO} = \frac{V_I^2 t_{on}}{2nL_p V_o^2 (1 + \frac{V_I}{nV_o})^2}; \quad r_1 = \frac{2L_p(1 + \frac{V_I}{nV_o})^2}{t_{on}}$$

$$M_T = \frac{V_I^2}{2L_p(1 + \frac{V_I}{nV_o})V_o}; \quad M_{VI} = \frac{V_I(2 + \frac{V_I}{nV_o})t_{on}}{2L_p V_o (1 + \frac{V_I}{nV_o})^2}; \quad r_2 = \frac{2L_p(1 + \frac{V_I}{nV_o})^2 V_o^2}{V_I^2 t_{on}}$$

Here, $V_I = \sqrt{2}V_{AC}$

Thereby, the control block diagram can be implemented as in figure10:

Consider the low frequency ripple, a lower crossover frequency is necessary to dampen the low frequency ripple caused by the input AC voltage. The recommended crossover frequency should be far less than the AC line frequency.

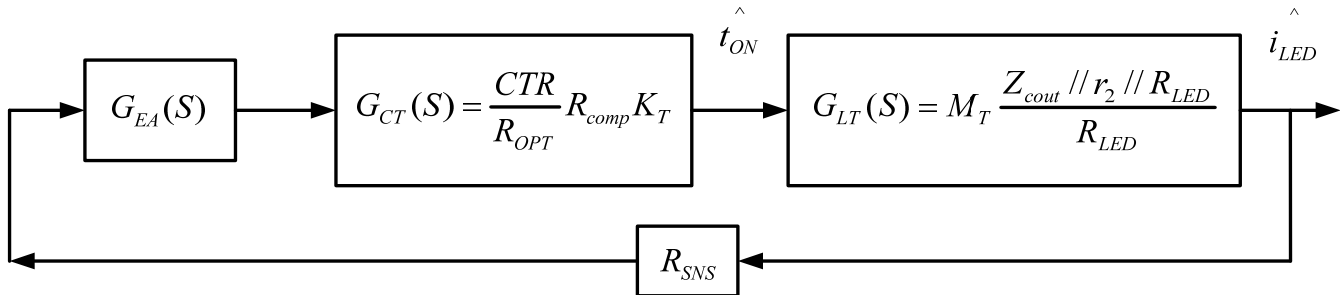


Figure 10. The LED current closed loop control implementation

4 A practical interleaved single stage LED driver design based on the UCC28060

$$P_{MAX} = 60W; V_{ACMIN} = 85V; V_{ACMAX} = 265V; V_{out} = 35V$$

Using the steps in section 2.3, assuming “ $f_{MIN}=65Khz$ ” and “ $K=1.1$ ” at low line input AC voltage, the transformer can be designed as below:

$$L_p = 440\mu H; n = 3$$

At low line input, on time of the UCC28060 is 7.12us.

At high line input, on time of UCC28060 is 1.46us.

The input current and 1st harmonic element in phase A or B can be simulated as below:

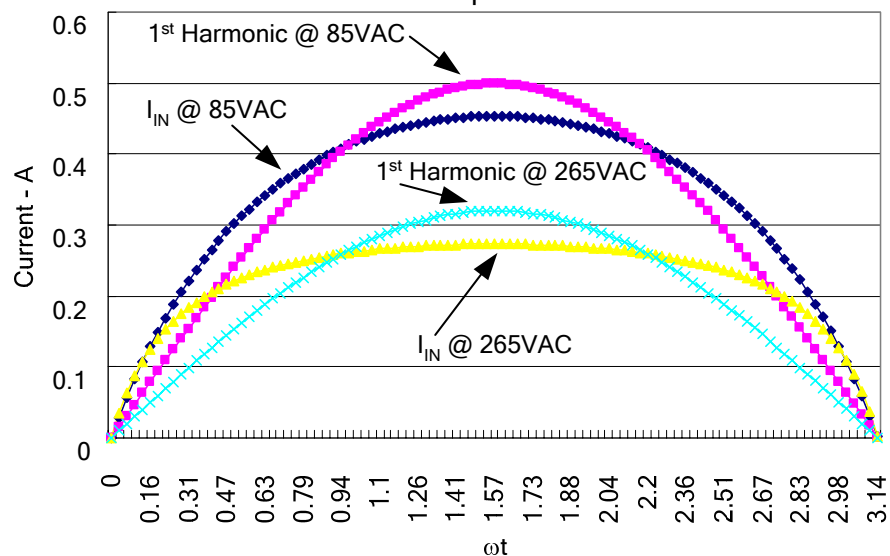


Figure 11. Input RMS current and its 1st Harmonic at 85VAC & 265VAC

Output capacitor on the secondary side:

According to table 2, as input AC line varies from 85V to 265V, or K varies from “1.1” to “3.4”, assuming “ $R_{LED}=3R$ ”, and the output peak to peak ripple voltage is within 1.7V, then the output capacitor can be selected based on equations (8) and (10).

$$I_{out} = \frac{60W}{35V} = 1.7A$$

$$\text{Then } \frac{U_{p-p}}{I_{out}} = \frac{1.7}{1.7} = 1$$

$$C_{out} \approx 2200\mu F$$

As a result, we can use 3x 680uF/68V Capacitors in parallel for the output capacitor configuration.

Loop compensation consideration:

According to the compensation solution in figure 9, loop compensation can be implemented as figure 9. The simulated closed loop regulation bode plot are shown in figures 12 and 13.

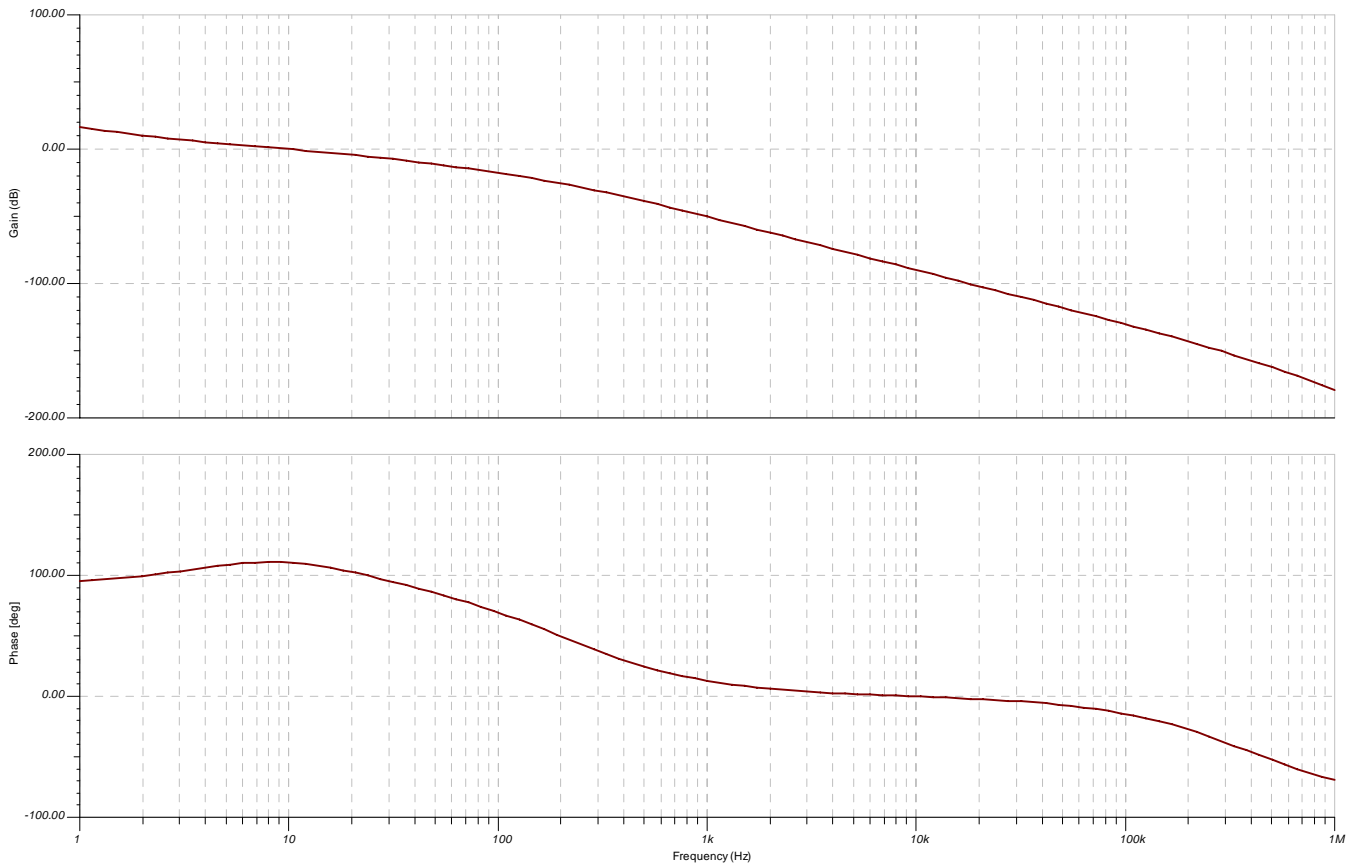


Figure 12. Closed-loop compensation with 85V line input

At 85V AC input, the phase margin is 110° , and crossover frequency is 10Hz.

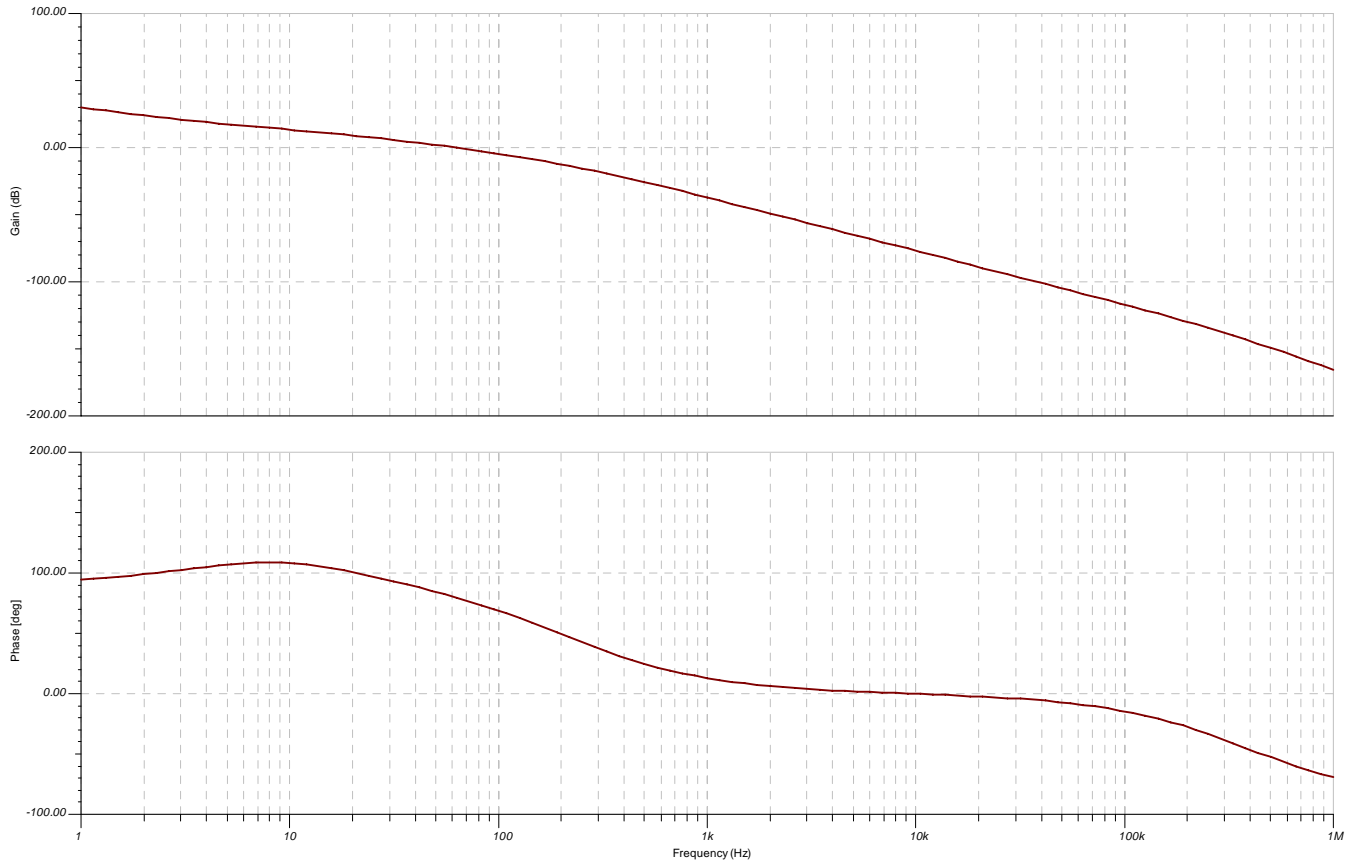


Figure 13. Closed-loop compensation with 265V line input

With 265VAC input, phase margin is 80° , and crossover frequency is 60Hz.

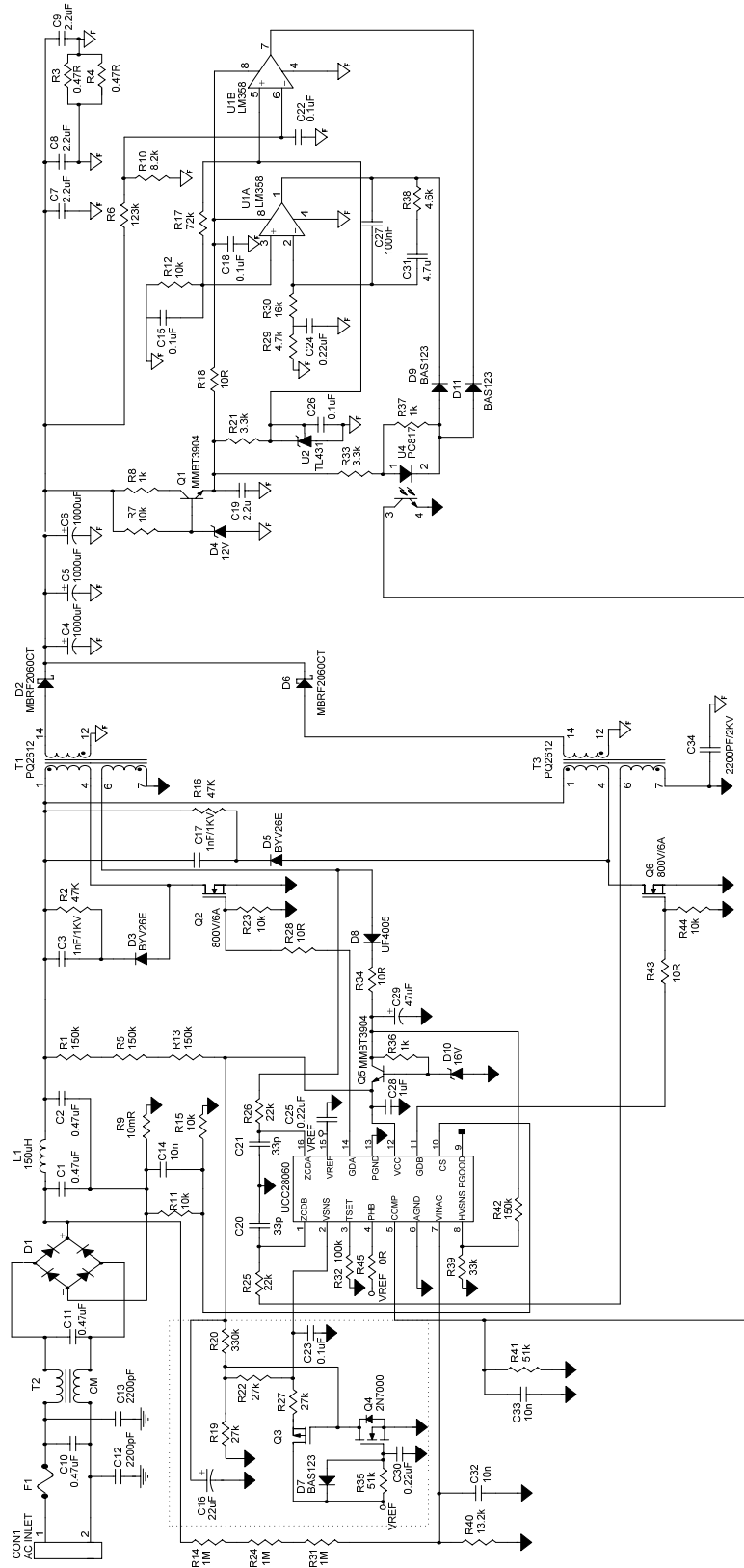


Figure 14. A 60W LED driver overall schematic

5 150W Interleaved Single Stage Design and Test Results

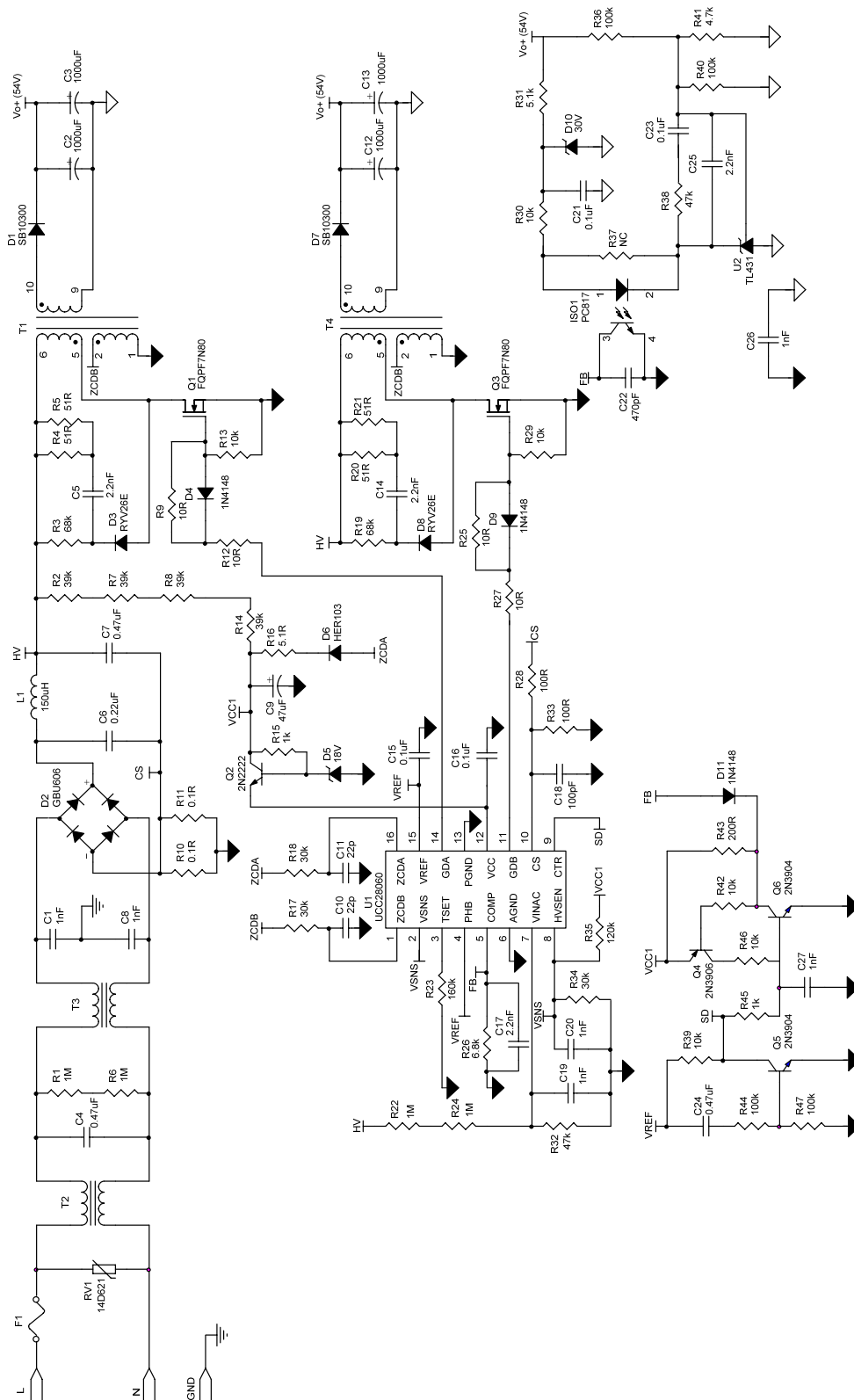


Figure 15. 150W Interleaved Single Date Schematic

5.1 Test Data

5.1.1 Efficiency versus Line

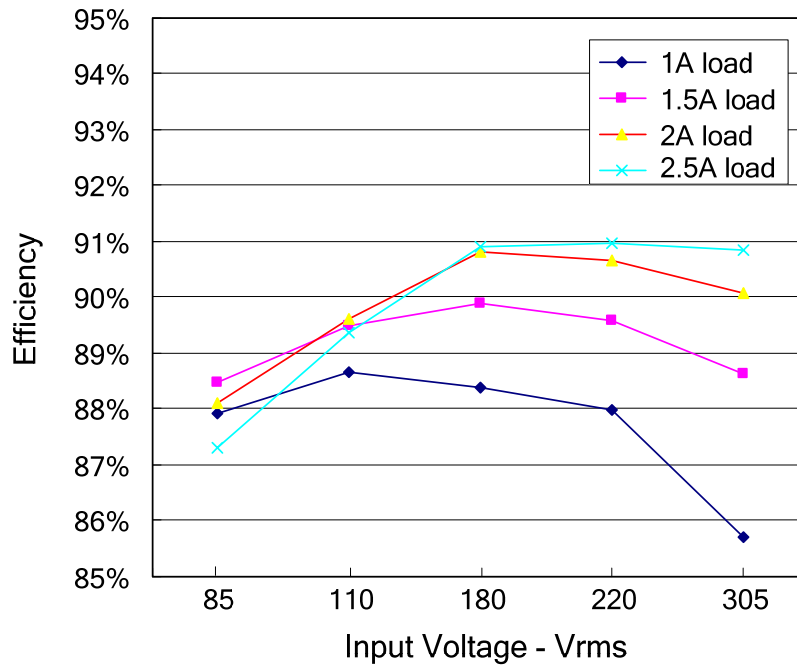


Figure 16. 150W Efficiency versus input voltage and load

5.1.2 Power Factor versus Line Voltage

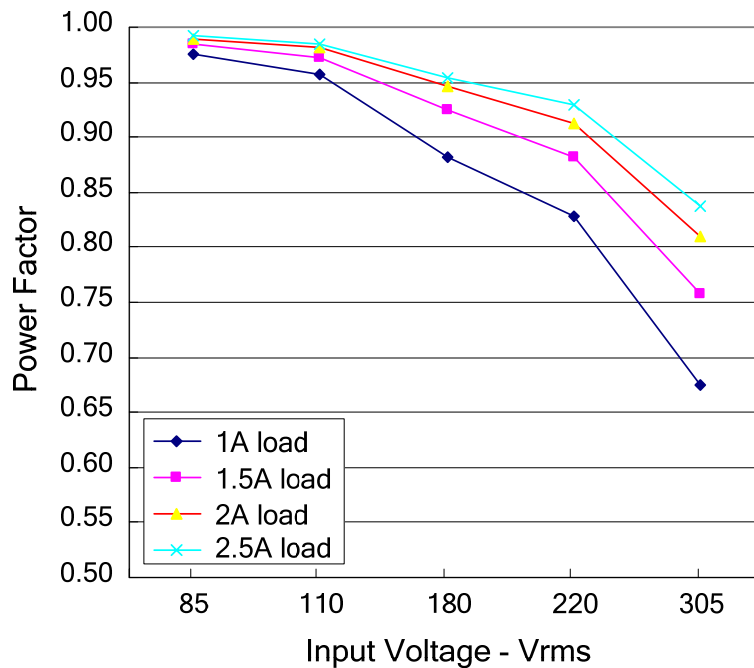


Figure 17. Power factor versus input voltage and load

5.1.3 Output Peak to Peak Ripple Voltage

Test conditions: Input = 220Vrms at 50Hz. Output current 3A.

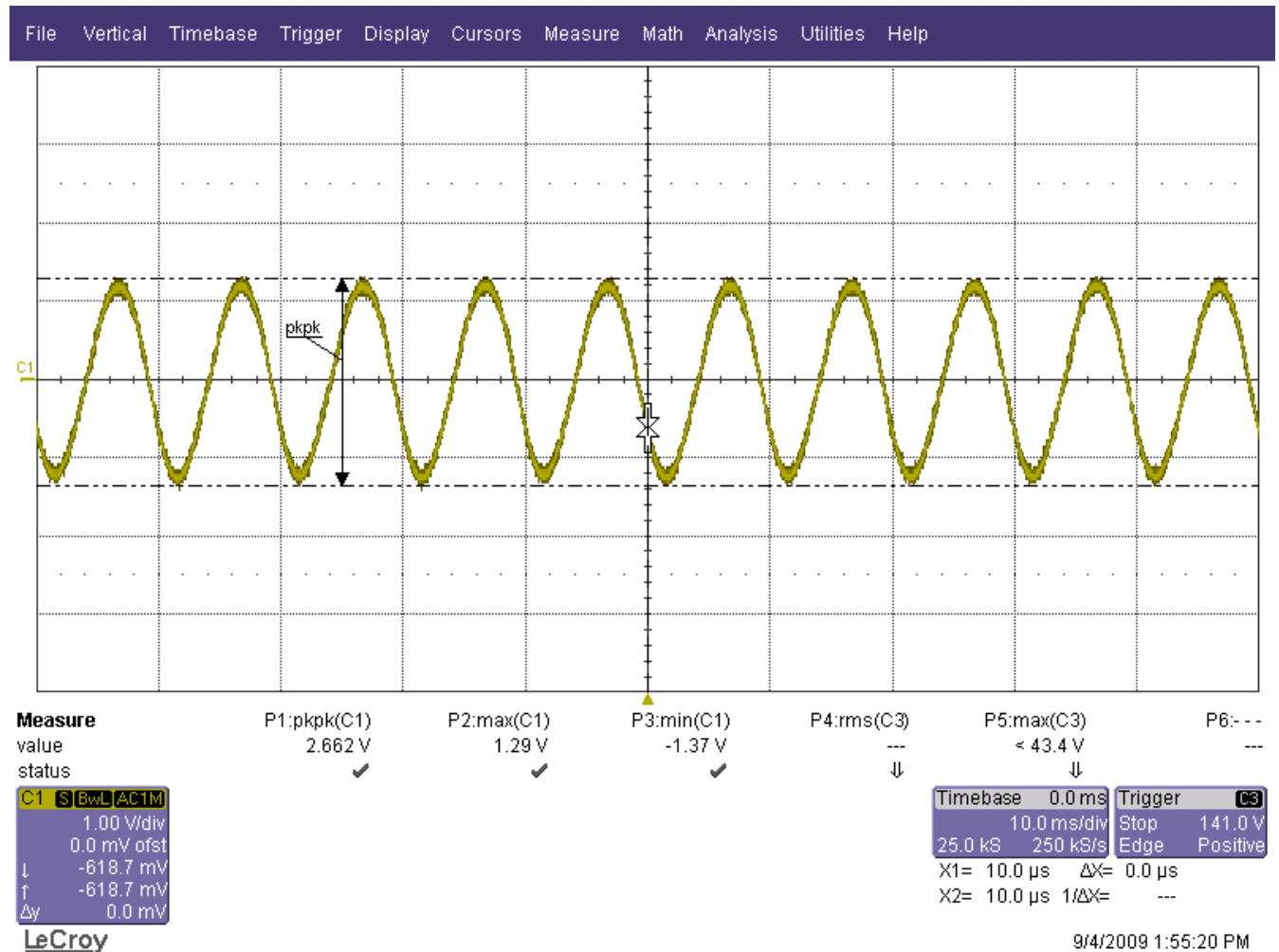


Figure 18. Output peak to peak ripple voltage, 2.6Vpp

6 Conclusion:

This note shows the analysis of a single stage Flyback LED driver, and the benefit of using an interleaved single stage topology for an LED driver based on the UCC28060. Meanwhile, a practical design has been implemented. It showed UCC28060 solution benefits with low cost and high efficiency.

IMPORTANT NOTICE

Texas Instruments Incorporated and its subsidiaries (TI) reserve the right to make corrections, modifications, enhancements, improvements, and other changes to its products and services at any time and to discontinue any product or service without notice. Customers should obtain the latest relevant information before placing orders and should verify that such information is current and complete. All products are sold subject to TI's terms and conditions of sale supplied at the time of order acknowledgment.

TI warrants performance of its hardware products to the specifications applicable at the time of sale in accordance with TI's standard warranty. Testing and other quality control techniques are used to the extent TI deems necessary to support this warranty. Except where mandated by government requirements, testing of all parameters of each product is not necessarily performed.

TI assumes no liability for applications assistance or customer product design. Customers are responsible for their products and applications using TI components. To minimize the risks associated with customer products and applications, customers should provide adequate design and operating safeguards.

TI does not warrant or represent that any license, either express or implied, is granted under any TI patent right, copyright, mask work right, or other TI intellectual property right relating to any combination, machine, or process in which TI products or services are used. Information published by TI regarding third-party products or services does not constitute a license from TI to use such products or services or a warranty or endorsement thereof. Use of such information may require a license from a third party under the patents or other intellectual property of the third party, or a license from TI under the patents or other intellectual property of TI.

Reproduction of TI information in TI data books or data sheets is permissible only if reproduction is without alteration and is accompanied by all associated warranties, conditions, limitations, and notices. Reproduction of this information with alteration is an unfair and deceptive business practice. TI is not responsible or liable for such altered documentation. Information of third parties may be subject to additional restrictions.

Resale of TI products or services with statements different from or beyond the parameters stated by TI for that product or service voids all express and any implied warranties for the associated TI product or service and is an unfair and deceptive business practice. TI is not responsible or liable for any such statements.

TI products are not authorized for use in safety-critical applications (such as life support) where a failure of the TI product would reasonably be expected to cause severe personal injury or death, unless officers of the parties have executed an agreement specifically governing such use. Buyers represent that they have all necessary expertise in the safety and regulatory ramifications of their applications, and acknowledge and agree that they are solely responsible for all legal, regulatory and safety-related requirements concerning their products and any use of TI products in such safety-critical applications, notwithstanding any applications-related information or support that may be provided by TI. Further, Buyers must fully indemnify TI and its representatives against any damages arising out of the use of TI products in such safety-critical applications.

TI products are neither designed nor intended for use in military/aerospace applications or environments unless the TI products are specifically designated by TI as military-grade or "enhanced plastic." Only products designated by TI as military-grade meet military specifications. Buyers acknowledge and agree that any such use of TI products which TI has not designated as military-grade is solely at the Buyer's risk, and that they are solely responsible for compliance with all legal and regulatory requirements in connection with such use.

TI products are neither designed nor intended for use in automotive applications or environments unless the specific TI products are designated by TI as compliant with ISO/TS 16949 requirements. Buyers acknowledge and agree that, if they use any non-designated products in automotive applications, TI will not be responsible for any failure to meet such requirements.

Following are URLs where you can obtain information on other Texas Instruments products and application solutions:

Products

Audio	www.ti.com/audio
Amplifiers	amplifier.ti.com
Data Converters	dataconverter.ti.com
DLP® Products	www.dlp.com
DSP	dsp.ti.com
Clocks and Timers	www.ti.com/clocks
Interface	interface.ti.com
Logic	logic.ti.com
Power Mgmt	power.ti.com
Microcontrollers	microcontroller.ti.com
RFID	www.ti-rfid.com
OMAP Mobile Processors	www.ti.com/omap
Wireless Connectivity	www.ti.com/wirelessconnectivity

Applications

Communications and Telecom	www.ti.com/communications
Computers and Peripherals	www.ti.com/computers
Consumer Electronics	www.ti.com/consumer-apps
Energy and Lighting	www.ti.com/energy
Industrial	www.ti.com/industrial
Medical	www.ti.com/medical
Security	www.ti.com/security
Space, Avionics and Defense	www.ti.com/space-avionics-defense
Transportation and Automotive	www.ti.com/automotive
Video and Imaging	www.ti.com/video

TI E2E Community Home Page

e2e.ti.com

Mailing Address: Texas Instruments, Post Office Box 655303, Dallas, Texas 75265
Copyright © 2011, Texas Instruments Incorporated