

**Test Data
For PMP20330 Flybuck
12/20/2016**



Table of Contents

1. Design Specifications	3
2. Circuit Description.....	3
3. PMP20330 Board Photos	3
4 Efficiency	4
4.1 Efficiency Chart	4
4.2 Efficiency Data.....	5
4.3 Load Regulation	6
5 Thermal	7
6 Waveform	8
6.1 Switching Waveform	8
6.2 Switching Output Ripple	10
6.3 Start Up	11
6.4 Transient Response.....	13

1. Design Specifications

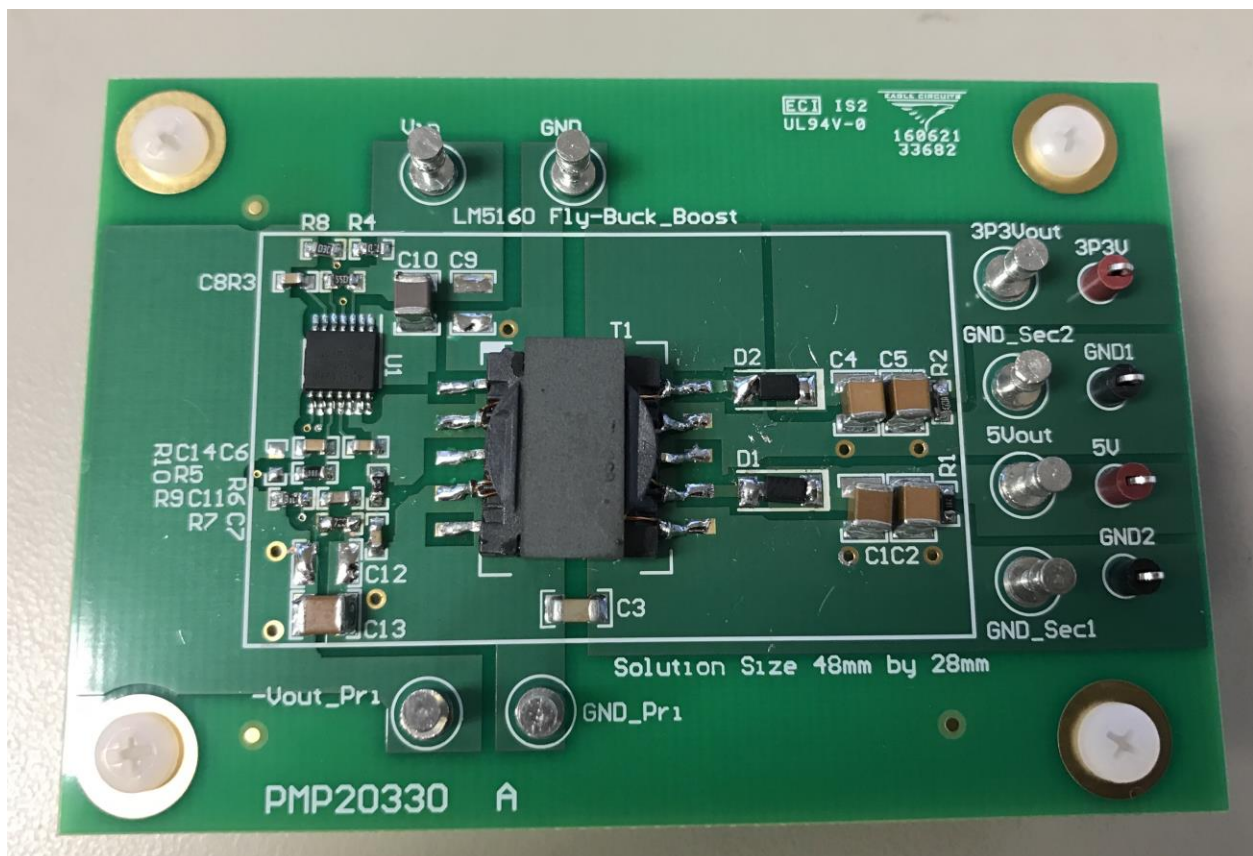
Vin Minimum	18VDC
Vin Maximum	31VDC
Vout	+3.3VDC @ 1A and +5VDC @ 0.5A
Nominal Switching Frequency	≈ 200KHz

2. Circuit Description

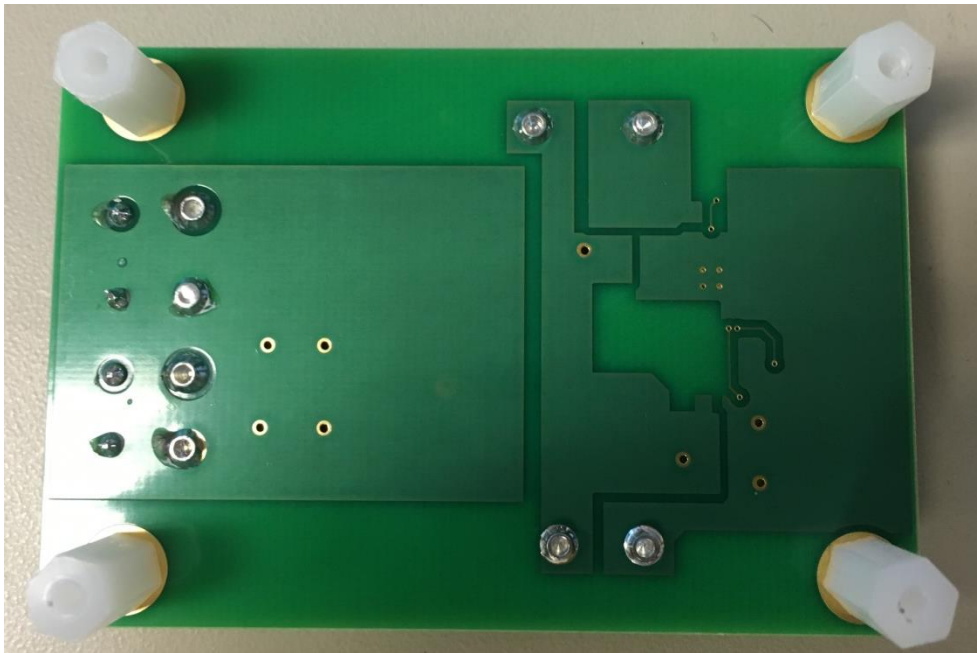
PMP20330 is an isolated Flyback converter utilizing the LM5160 for industrial applications. This design has a minimum operating input voltage of 18V and a maximum input voltage of 31V. The design is capable of sourcing 1A continuous current at 3.3Vout and 0.5A current at 5Vout. Switching frequency is set to 200kHz. A custom transformer from Wurth is used.

3. PMP20330 Board Photos

Board Dimensions: 79mm x 107mm



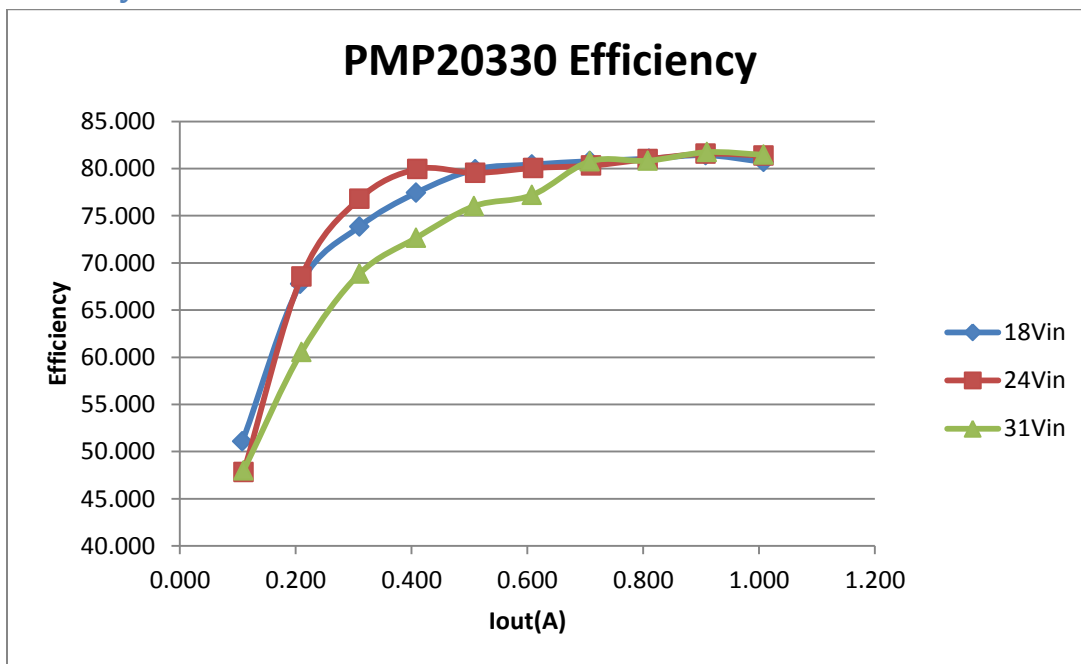
Board Photo (Top)



Board Photo (Bottom)

4 Efficiency

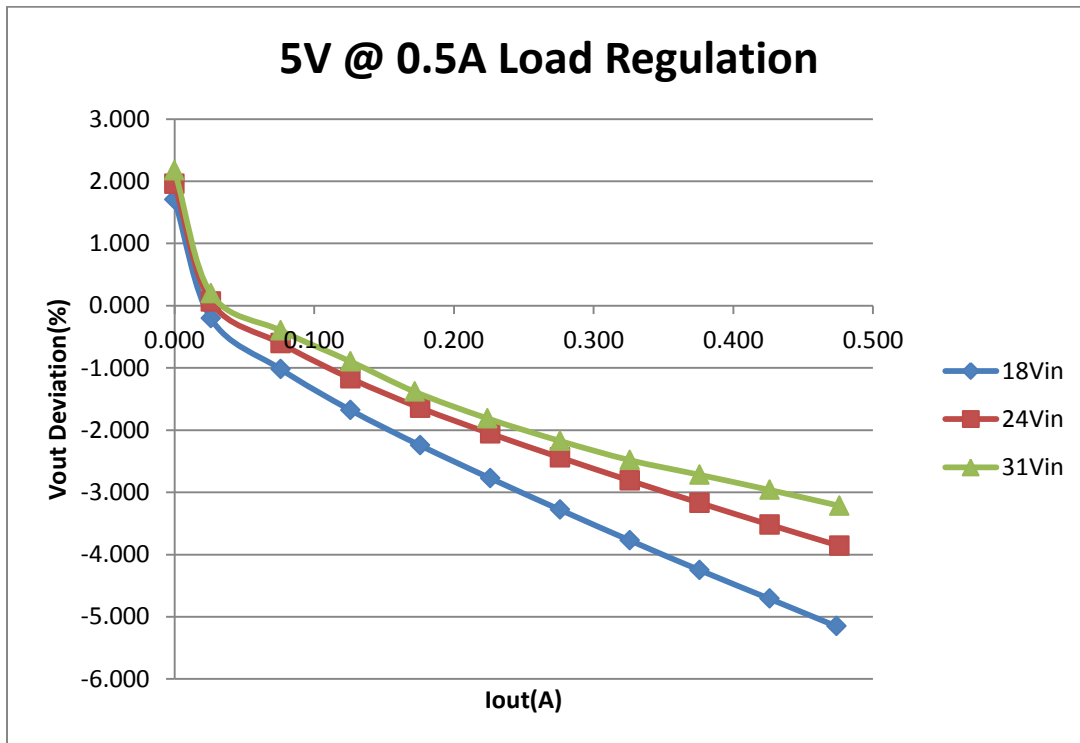
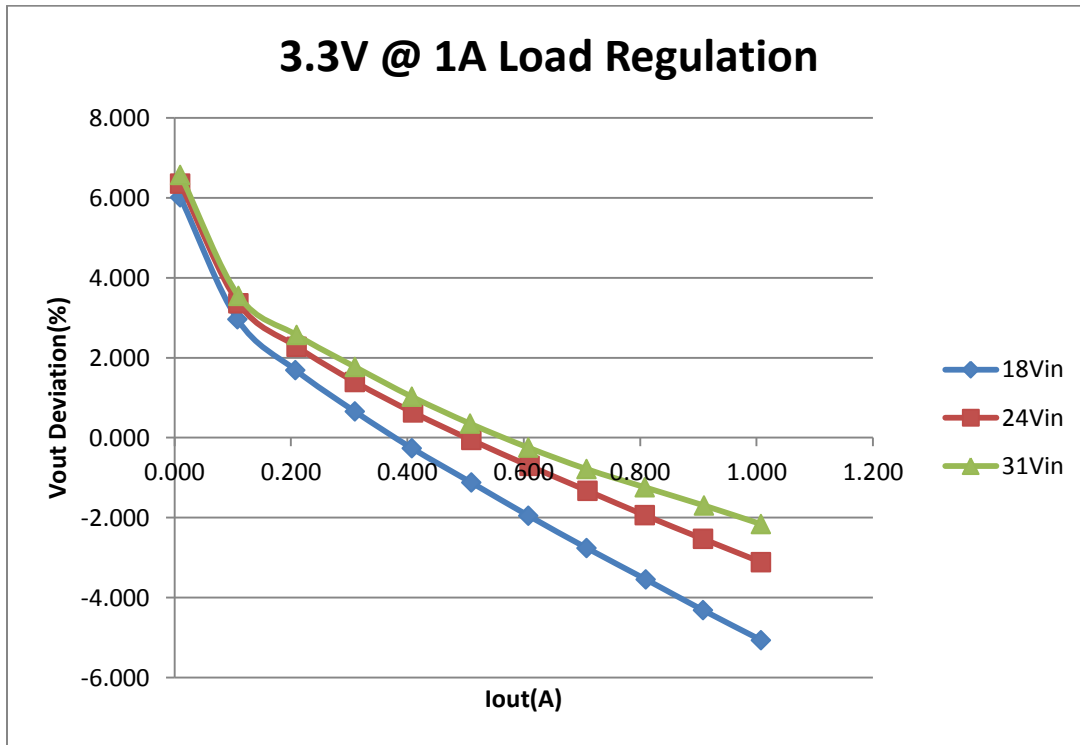
4.1 Efficiency Chart



4.2 Efficiency Data

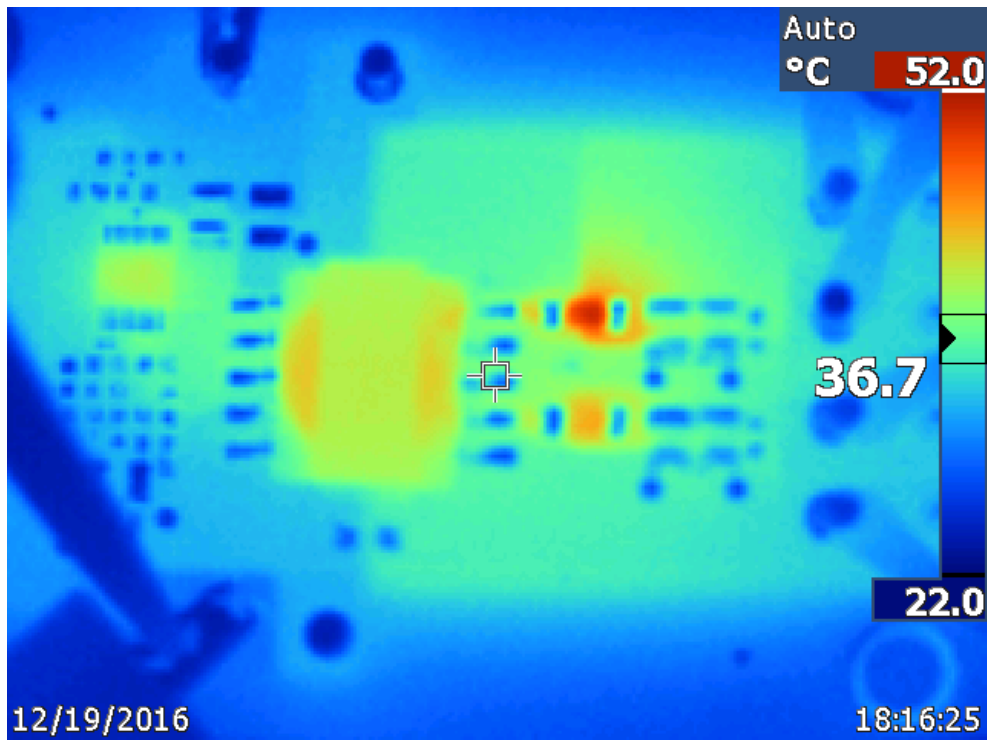
Vin (V)	Iin (A)	Vout1 (V)	Iout (A)	Vout2 (V)	Iout2 (A)	Pin (W)	Pout(W)	Losses (W)	Efficiency
18.007	0.018	5.085	0.000	3.498	0.010	0.324	0.035	0.289	10.802
18.007	0.054	4.990	0.026	3.398	0.108	0.972	0.497	0.476	51.081
18.007	0.088	4.949	0.076	3.356	0.208	1.585	1.074	0.510	67.786
18.007	0.124	4.916	0.126	3.322	0.310	2.233	1.649	0.584	73.858
18.007	0.158	4.888	0.176	3.291	0.408	2.845	2.203	0.642	77.435
18.006	0.192	4.861	0.226	3.263	0.510	3.457	2.763	0.694	79.913
18.006	0.228	4.836	0.276	3.236	0.608	4.105	3.302	0.803	80.429
18.006	0.264	4.811	0.326	3.209	0.708	4.754	3.840	0.913	80.790
18.006	0.300	4.787	0.376	3.183	0.810	5.402	4.378	1.024	81.052
18.006	0.334	4.764	0.426	3.158	0.908	6.014	4.897	1.117	81.423
18.007	0.372	4.742	0.474	3.133	1.008	6.698	5.406	1.293	80.704
24.014	0.018	5.098	0.000	3.510	0.010	0.432	0.035	0.397	8.100
24.014	0.044	5.003	0.026	3.411	0.110	1.057	0.505	0.551	47.820
24.014	0.066	4.970	0.076	3.375	0.210	1.585	1.086	0.498	68.551
24.014	0.090	4.942	0.126	3.346	0.310	2.161	1.660	0.501	76.802
24.014	0.116	4.918	0.176	3.321	0.410	2.786	2.227	0.559	79.949
24.014	0.146	4.897	0.226	3.298	0.510	3.506	2.789	0.717	79.543
24.014	0.174	4.878	0.276	3.277	0.610	4.178	3.345	0.833	80.056
24.014	0.202	4.859	0.326	3.256	0.710	4.851	3.896	0.955	80.317
24.014	0.228	4.841	0.376	3.236	0.808	5.475	4.435	1.040	81.005
24.014	0.254	4.824	0.426	3.216	0.908	6.099	4.976	1.124	81.574
24.014	0.282	4.807	0.476	3.197	1.008	6.772	5.511	1.261	81.381
31.013	0.018	5.109	0.000	3.517	0.010	0.558	0.035	0.523	6.272
31.012	0.034	5.010	0.026	3.417	0.110	1.054	0.506	0.548	48.001
31.012	0.058	4.980	0.076	3.385	0.210	1.799	1.089	0.709	60.557
31.012	0.078	4.955	0.126	3.358	0.310	2.419	1.665	0.754	68.850
31.012	0.098	4.931	0.172	3.334	0.408	3.039	2.208	0.831	72.660
31.012	0.118	4.909	0.224	3.312	0.508	3.659	2.782	0.877	76.022
31.012	0.140	4.891	0.276	3.292	0.608	4.342	3.351	0.990	77.191
31.012	0.156	4.876	0.326	3.274	0.708	4.838	3.908	0.930	80.771
31.012	0.178	4.864	0.376	3.259	0.808	5.520	4.462	1.058	80.835
31.012	0.198	4.852	0.426	3.244	0.910	6.140	5.019	1.121	81.738
31.012	0.220	4.839	0.476	3.229	1.008	6.823	5.558	1.265	81.464

4.3 Load Regulation

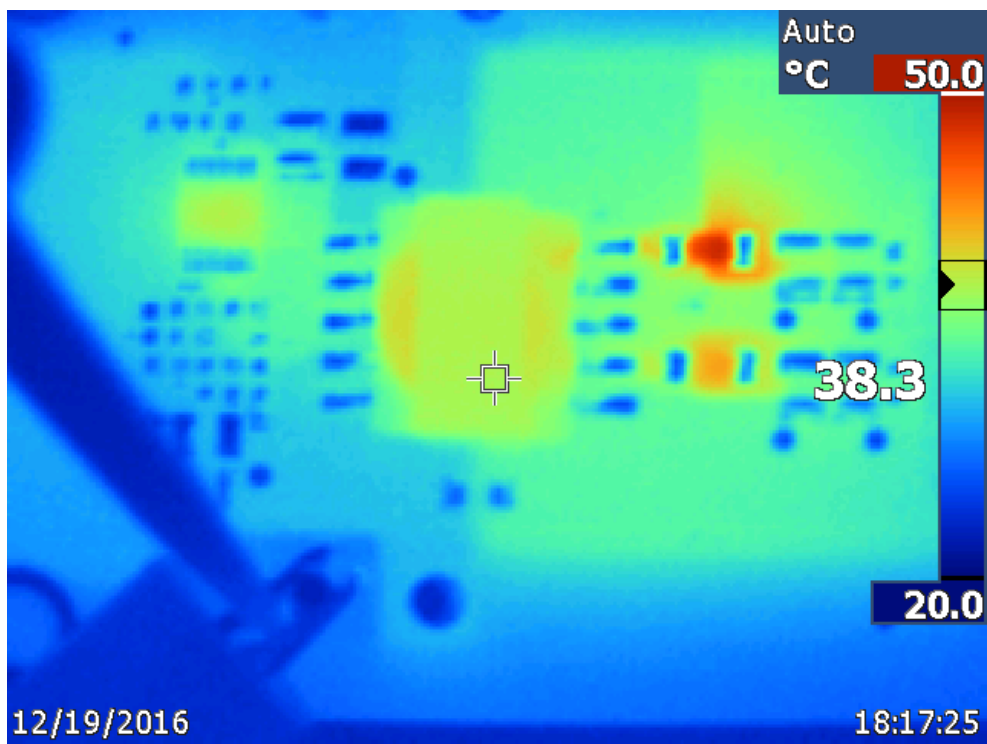


-40oC

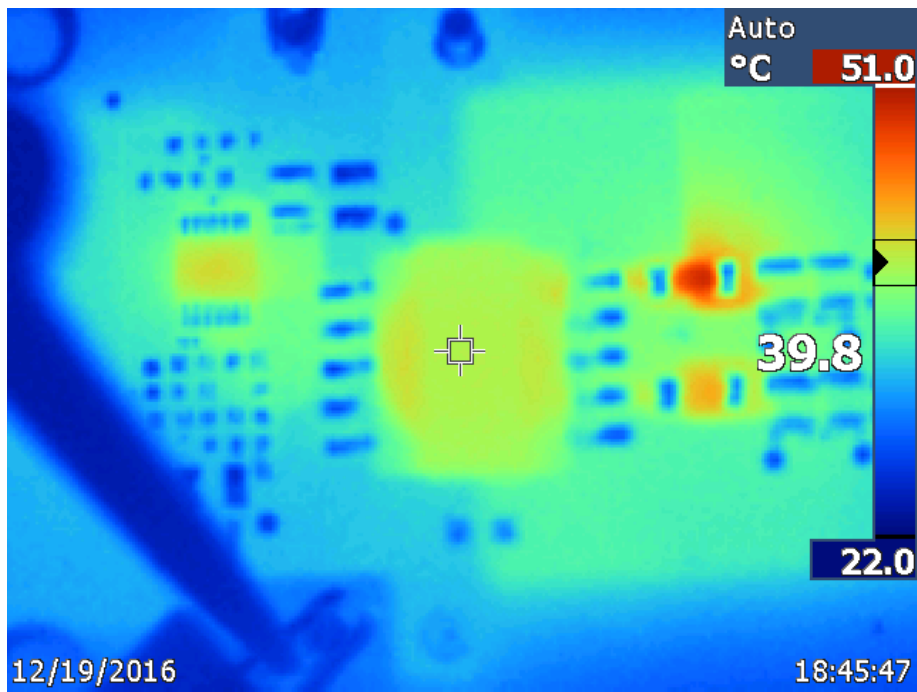
5 Thermal



Thermal equilibrium was taken at 18Vin, full load on both 3.3V and 5V rails. No air flow.



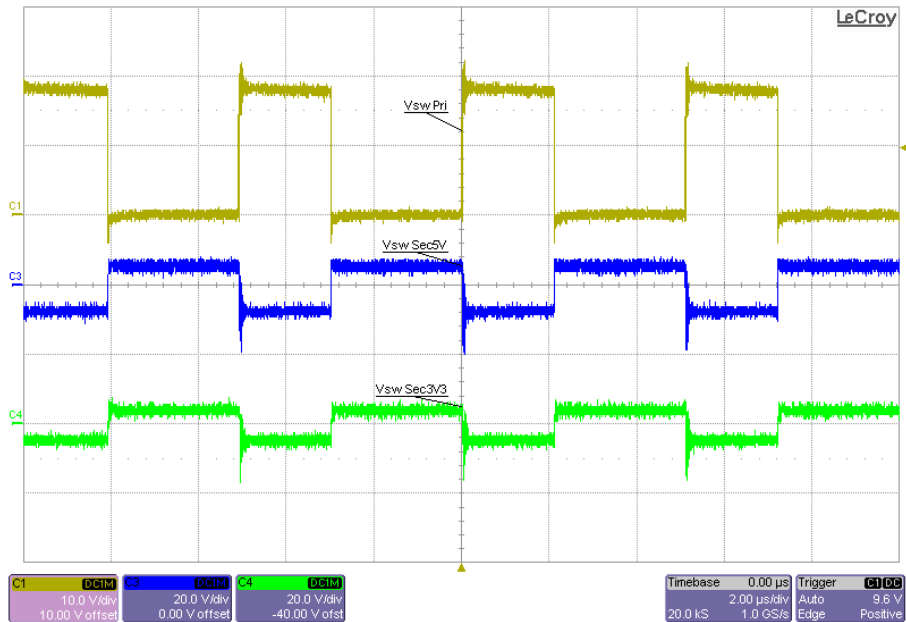
Thermal equilibrium was taken at 24Vin, full load on both 3.3V and 5V rails. No air flow.



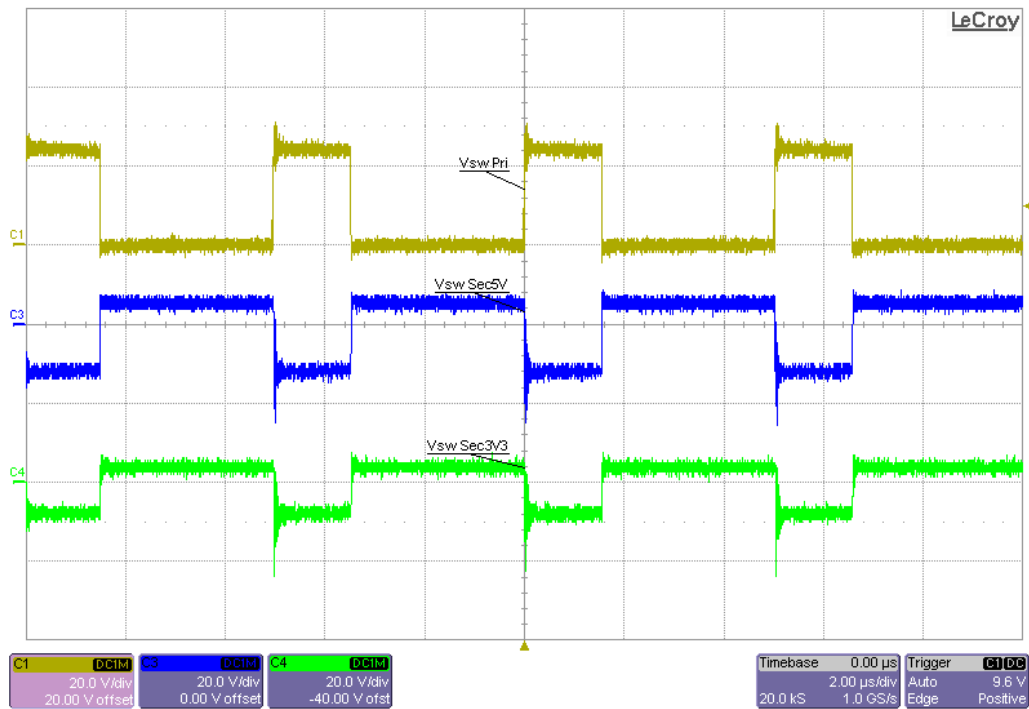
Thermal equilibrium was taken at 31Vin, full load on both 3.3V and 5V rails. No air flow.

6 Waveform

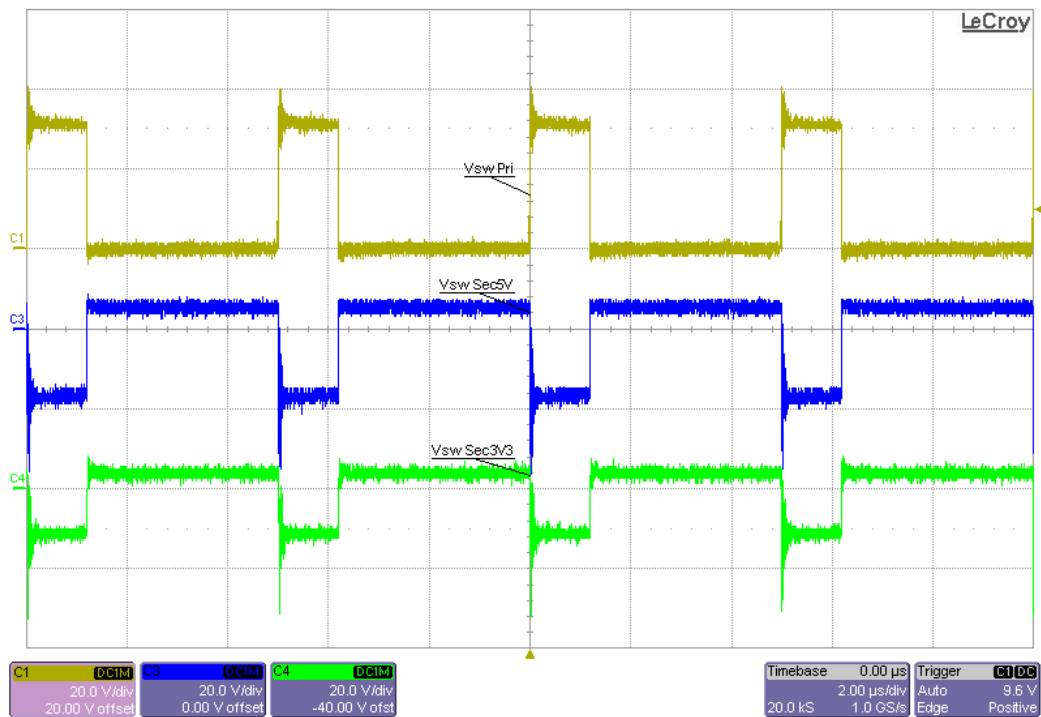
6.1 Switching Waveform



18Vin, full load on both 3.3V and 5V rails. Ch1 measures primary switch, Ch4 measures 3.3V secondary switch, Ch3 measures 5V secondary switch.

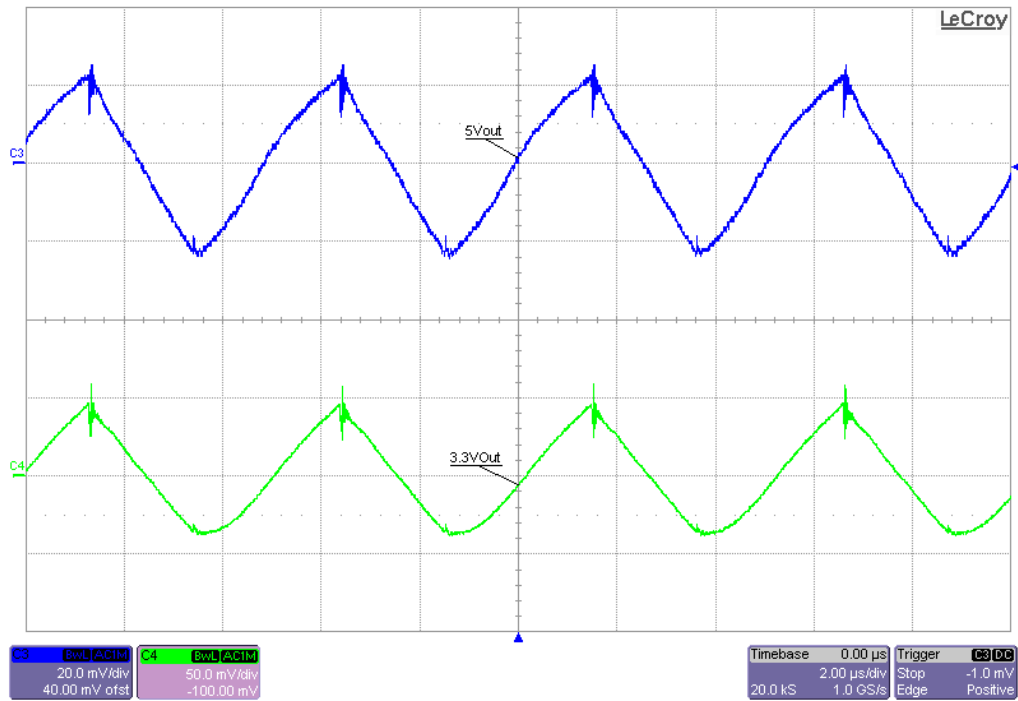


24Vin, full load on both 3.3V and 5V rails. Ch1 measures primary switch, Ch4 measures 3.3V secondary switch, Ch3 measures 5V secondary switch.

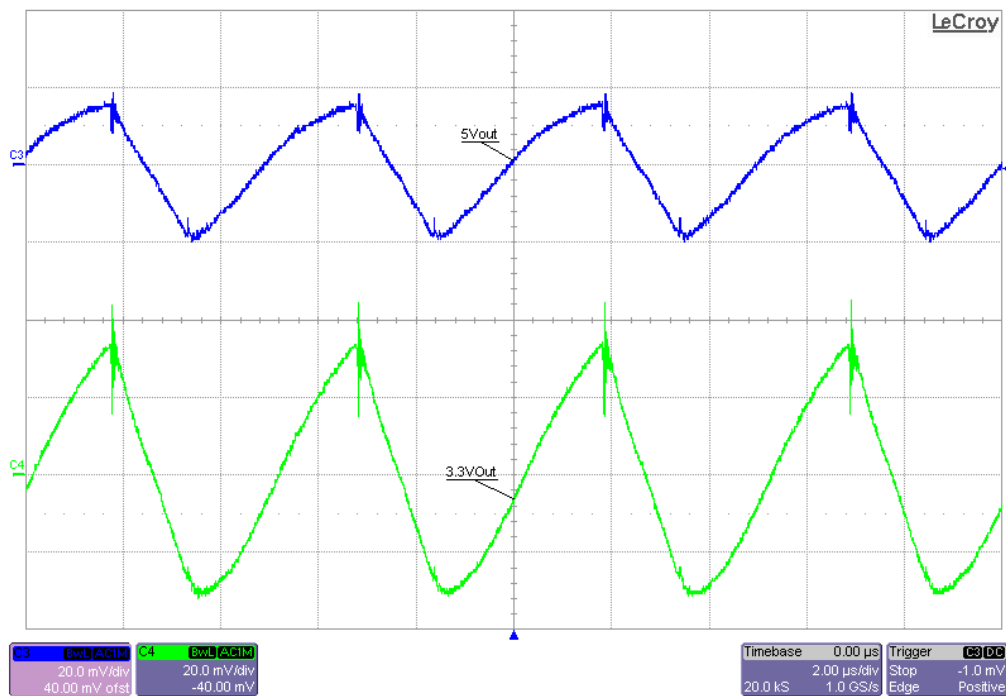


31Vin, full load on both 3.3V and 5V rails. Ch1 measures primary switch, Ch4 measures 3.3V secondary switch, Ch3 measures 5V secondary switch.

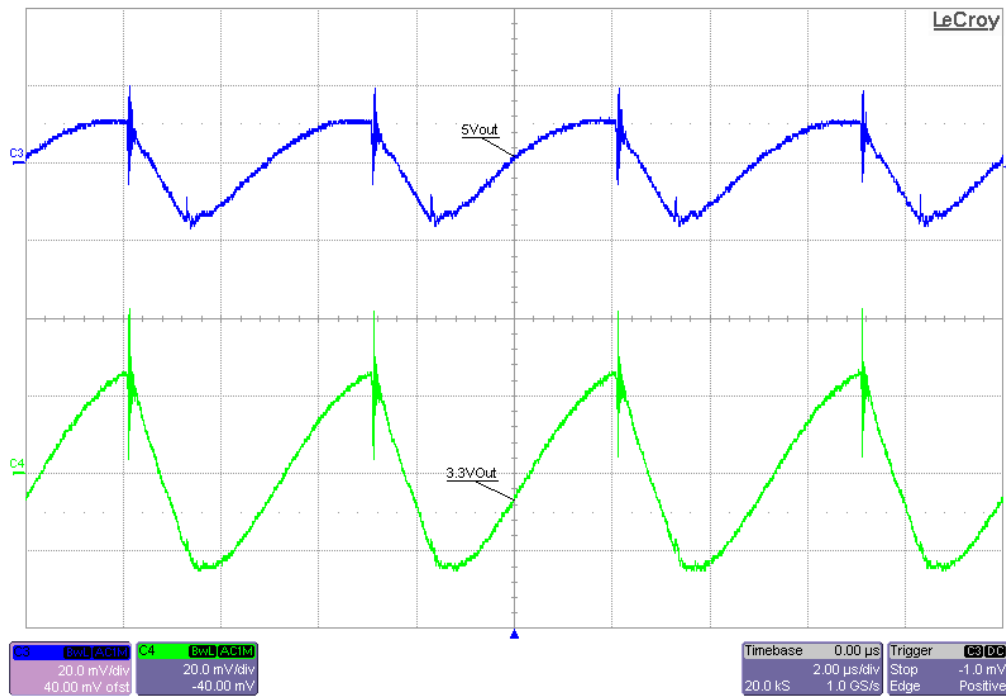
6.2 Switching Output Ripple



18Vin, full load on both 3.3V and 5V rails. Ch4 measures 3.3V switching output ripple, Ch3 measures 5V switching output ripple.

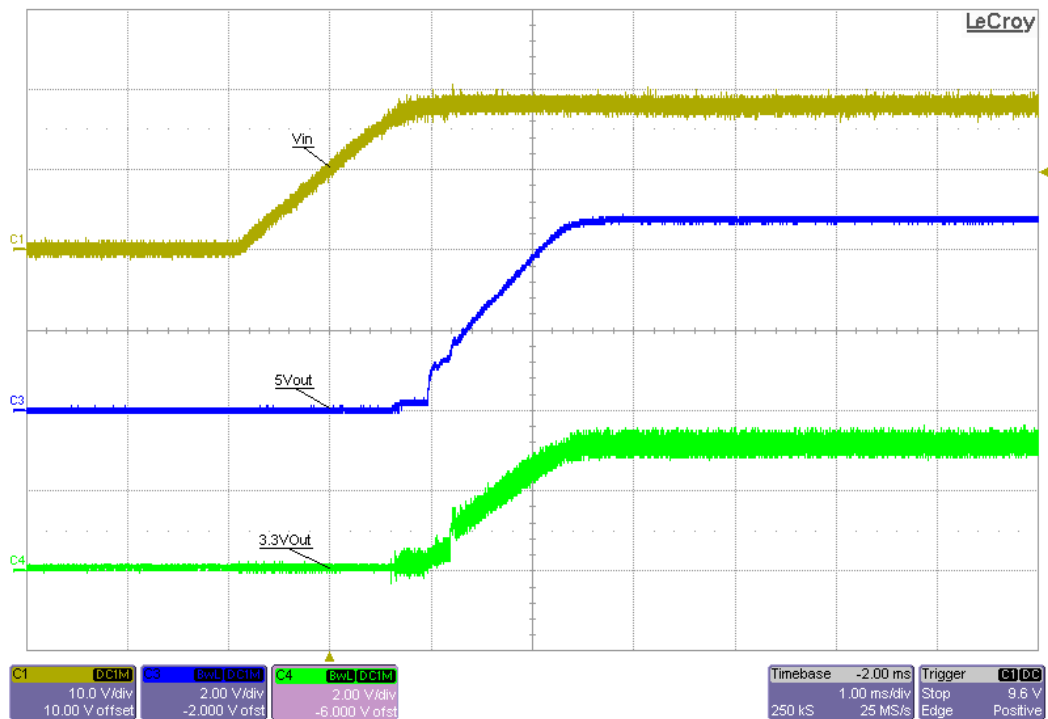


24Vin, full load on both 3.3V and 5V rails. Ch4 measures 3.3V switching output ripple, Ch3 measures 5V switching output ripple.

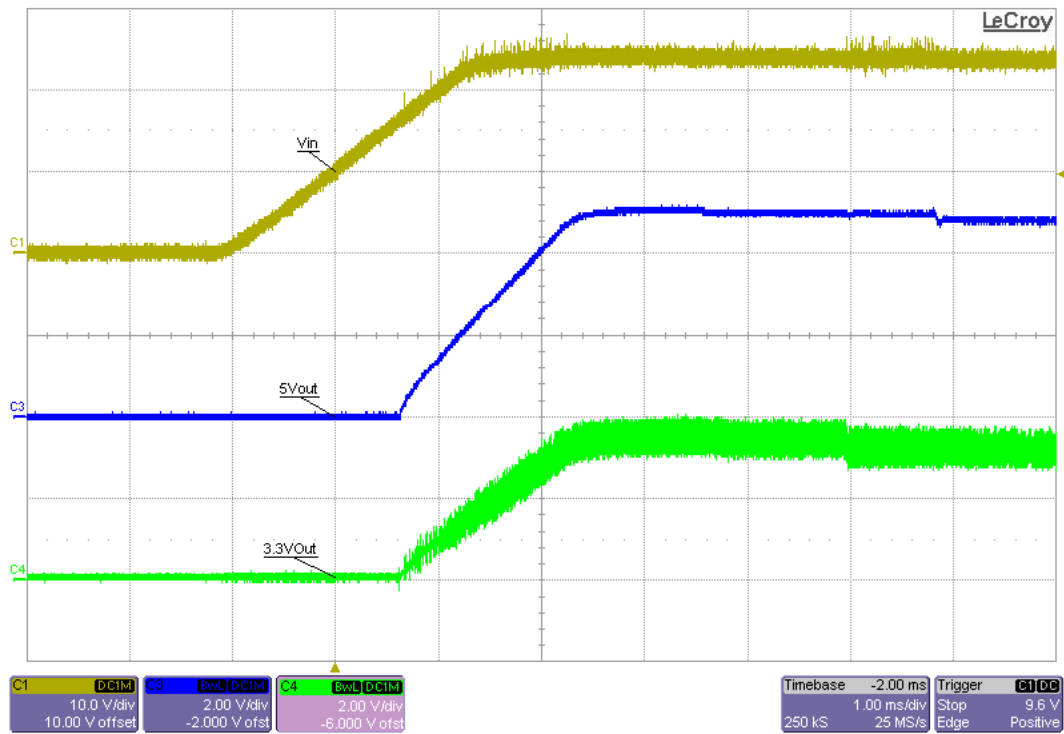


31Vin, full load on both 3.3V and 5V rails. Ch4 measures 3.3V switching output ripple, Ch3 measures 5V switching output ripple.

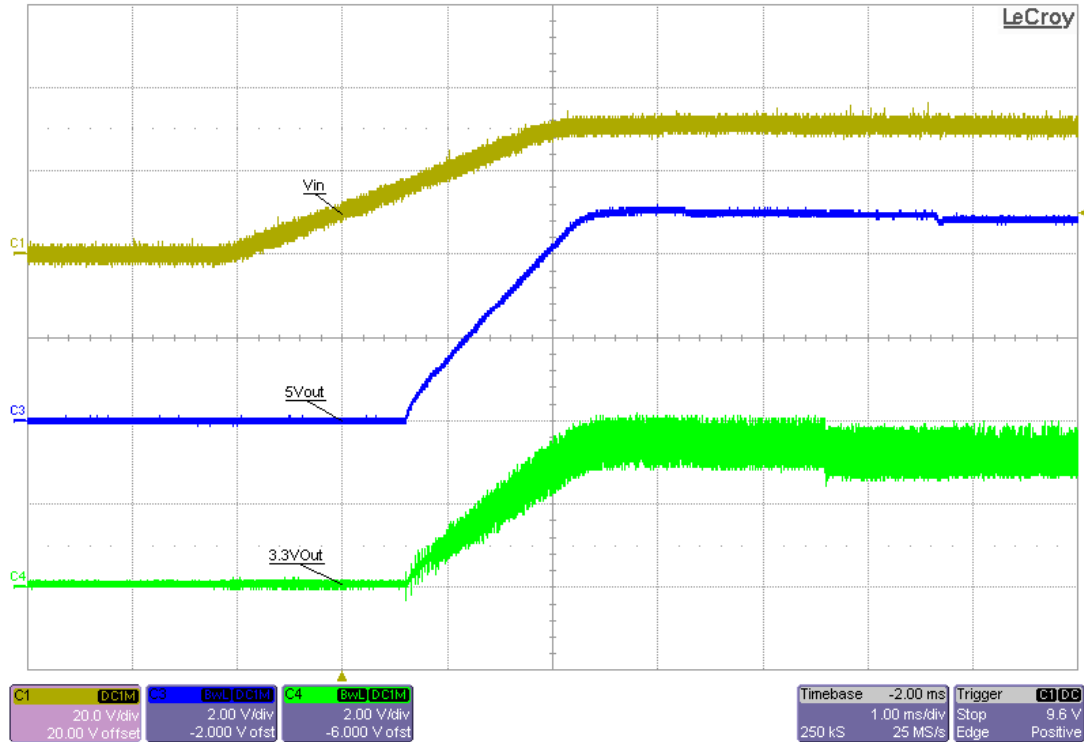
6.3 Start Up



18Vin, full load start up from Vin. Ch1 measures Vin, Ch3 measures 5V, and Ch4 measures 3.3V.

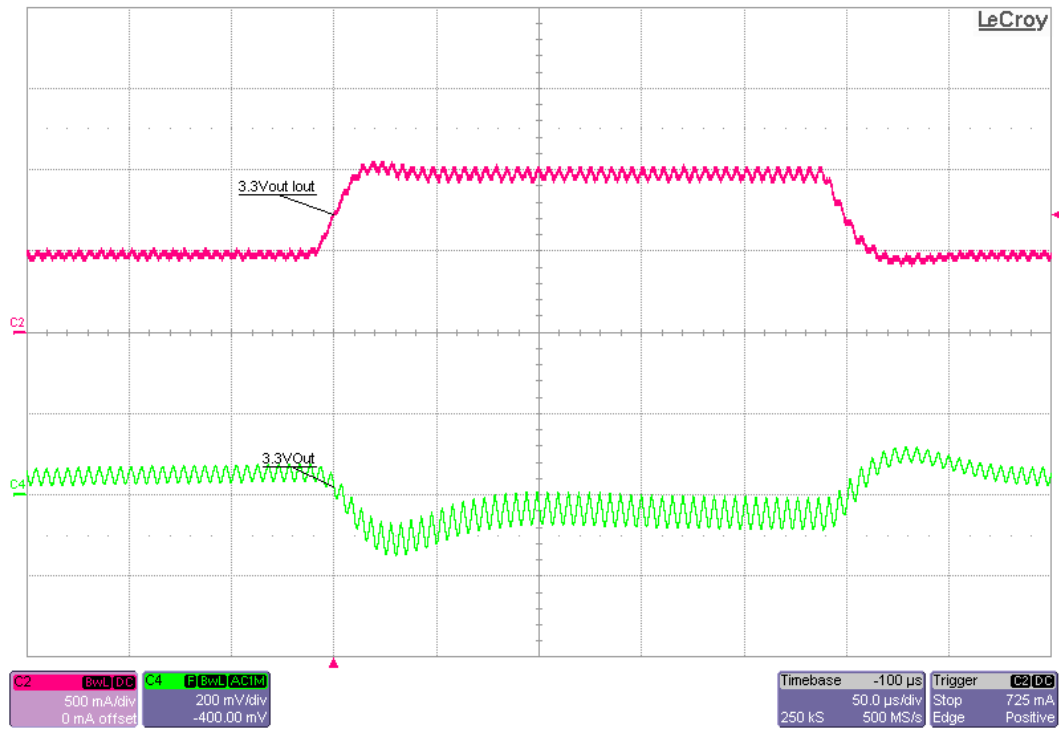


24Vin, full load start up from Vin. Ch1 measures Vin, Ch3 measures 5V, and Ch4 measures 3.3V.

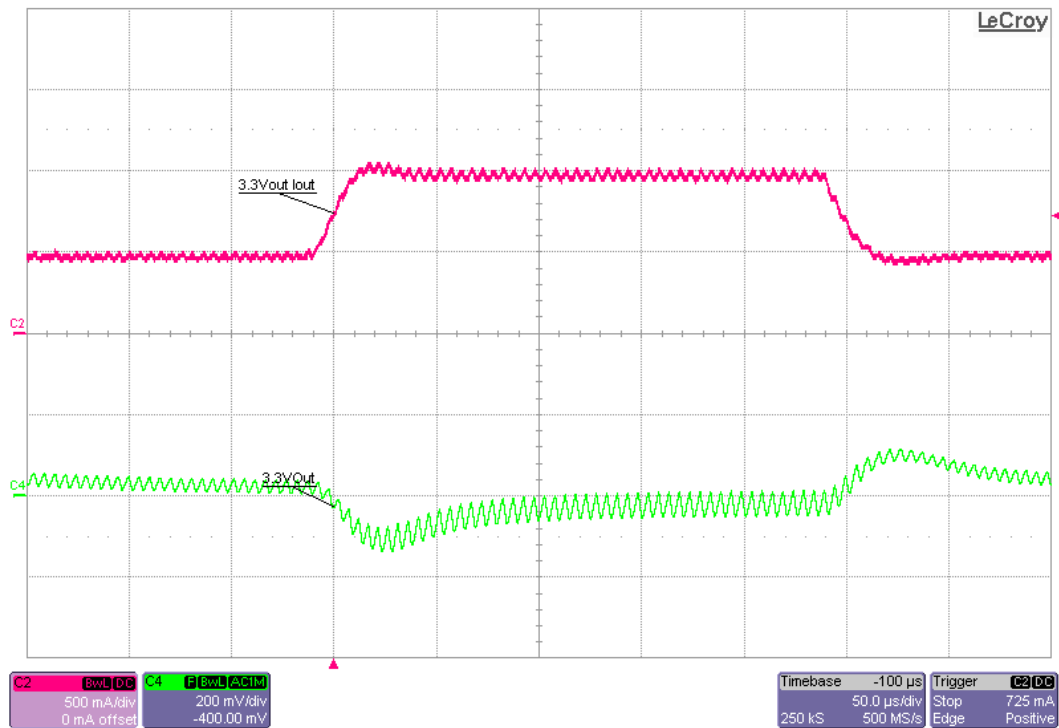


31Vin, full load start up from Vin. Ch1 measures Vin, Ch3 measures 5V, and Ch4 measures 3.3V.

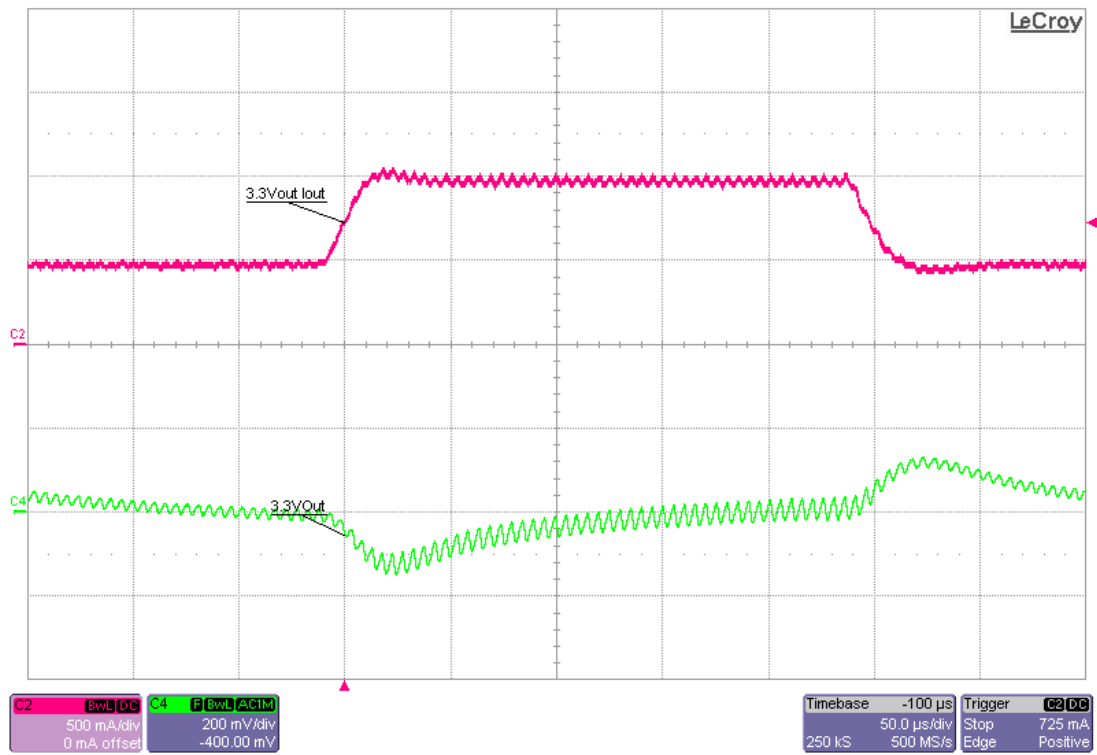
6.4 Transient Response



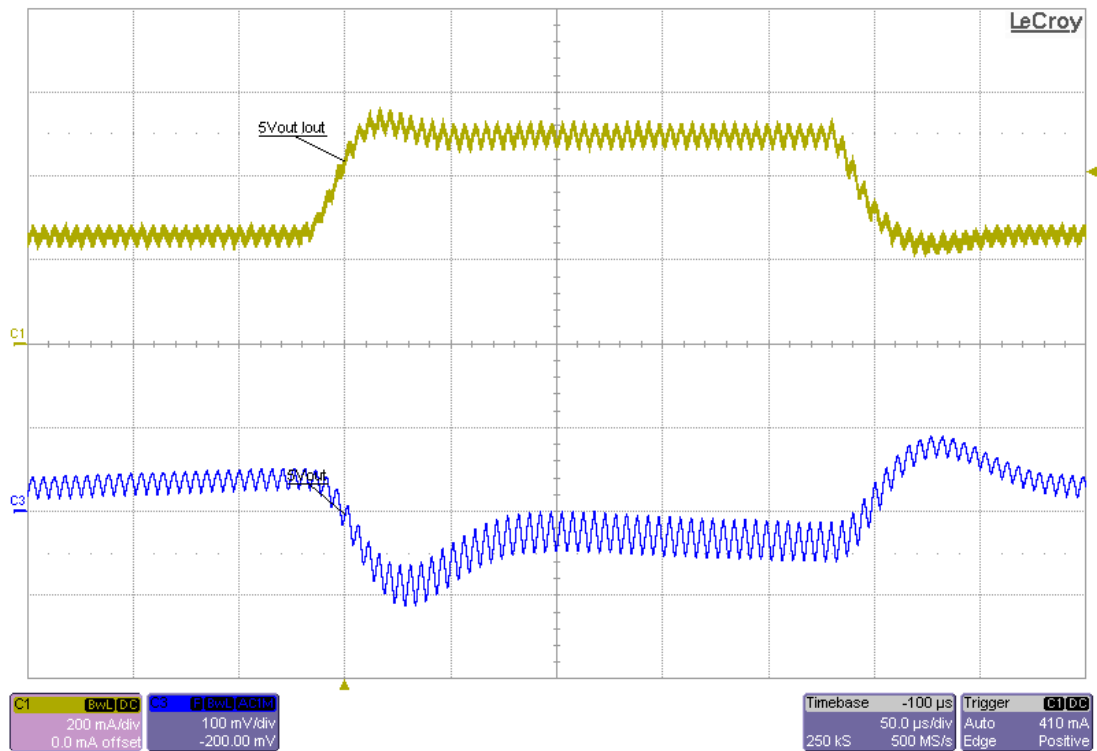
18Vin, 3.3Vout 0.5A to 1A load transient while 5V loaded. Ch2 measures Iout, and Ch4 measures 3.3V.



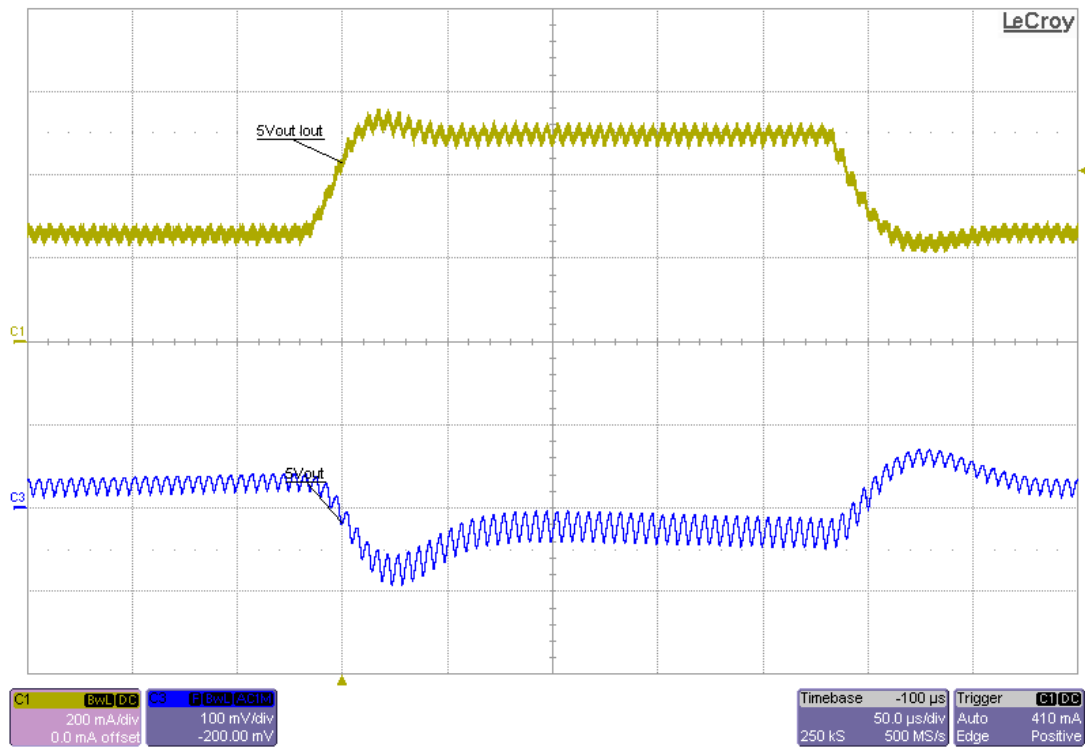
24Vin, 3.3Vout 0.5A to 1A load transient while 5V loaded. Ch2 measures Iout, and Ch4 measures 3.3V.



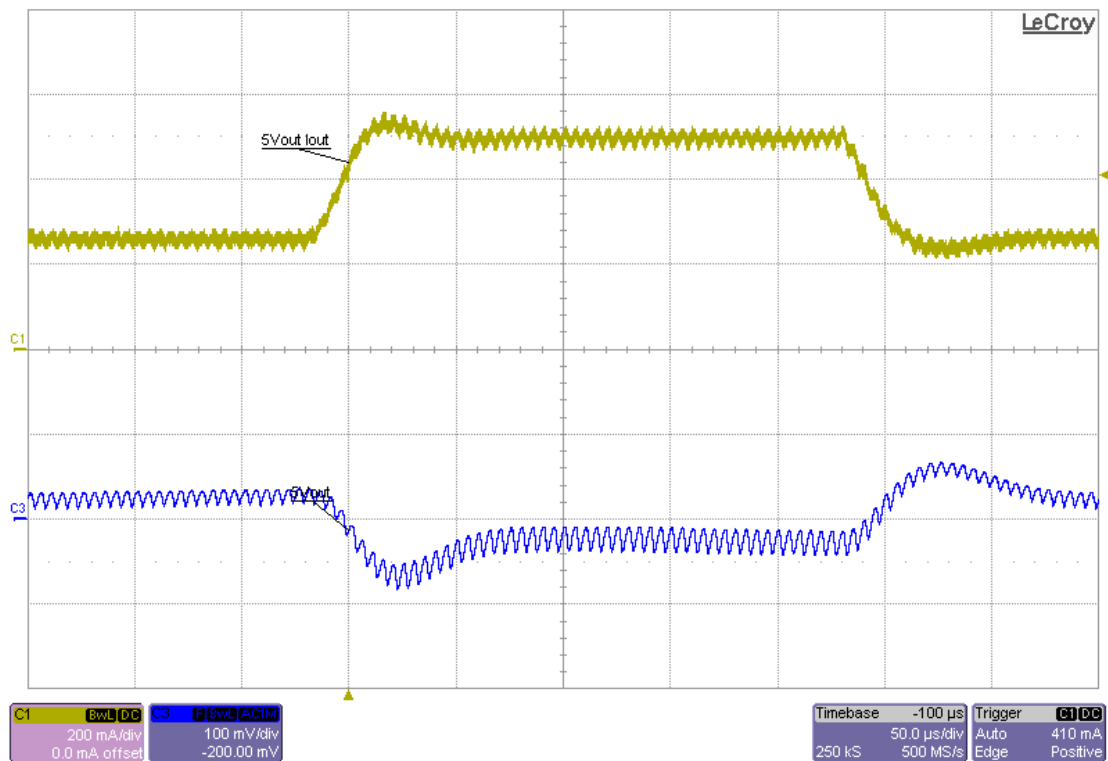
31Vin, 3.3Vout 0.5A to 1A load transient while 5V loaded. Ch2 measures lout, and Ch4 measures 3.3V.



18Vin, 5Vout 0.25A to 0.5A load transient while 3.3V loaded. Ch1 measures lout, Ch3 measures 5V.



24Vin, 5Vout 0.25A to 0.5A load transient while 3.3V loaded. Ch1 measures Iout, Ch3 measures 5V.



31Vin, 5Vout 0.25A to 0.5A load transient while 3.3V loaded. Ch1 measures Iout, Ch3 measures 5V.

IMPORTANT NOTICE FOR TI DESIGN INFORMATION AND RESOURCES

Texas Instruments Incorporated ("TI") technical, application or other design advice, services or information, including, but not limited to, reference designs and materials relating to evaluation modules, (collectively, "TI Resources") are intended to assist designers who are developing applications that incorporate TI products; by downloading, accessing or using any particular TI Resource in any way, you (individually or, if you are acting on behalf of a company, your company) agree to use it solely for this purpose and subject to the terms of this Notice.

TI's provision of TI Resources does not expand or otherwise alter TI's applicable published warranties or warranty disclaimers for TI products, and no additional obligations or liabilities arise from TI providing such TI Resources. TI reserves the right to make corrections, enhancements, improvements and other changes to its TI Resources.

You understand and agree that you remain responsible for using your independent analysis, evaluation and judgment in designing your applications and that you have full and exclusive responsibility to assure the safety of your applications and compliance of your applications (and of all TI products used in or for your applications) with all applicable regulations, laws and other applicable requirements. You represent that, with respect to your applications, you have all the necessary expertise to create and implement safeguards that (1) anticipate dangerous consequences of failures, (2) monitor failures and their consequences, and (3) lessen the likelihood of failures that might cause harm and take appropriate actions. You agree that prior to using or distributing any applications that include TI products, you will thoroughly test such applications and the functionality of such TI products as used in such applications. TI has not conducted any testing other than that specifically described in the published documentation for a particular TI Resource.

You are authorized to use, copy and modify any individual TI Resource only in connection with the development of applications that include the TI product(s) identified in such TI Resource. NO OTHER LICENSE, EXPRESS OR IMPLIED, BY ESTOPPEL OR OTHERWISE TO ANY OTHER TI INTELLECTUAL PROPERTY RIGHT, AND NO LICENSE TO ANY TECHNOLOGY OR INTELLECTUAL PROPERTY RIGHT OF TI OR ANY THIRD PARTY IS GRANTED HEREIN, including but not limited to any patent right, copyright, mask work right, or other intellectual property right relating to any combination, machine, or process in which TI products or services are used. Information regarding or referencing third-party products or services does not constitute a license to use such products or services, or a warranty or endorsement thereof. Use of TI Resources may require a license from a third party under the patents or other intellectual property of the third party, or a license from TI under the patents or other intellectual property of TI.

TI RESOURCES ARE PROVIDED "AS IS" AND WITH ALL FAULTS. TI DISCLAIMS ALL OTHER WARRANTIES OR REPRESENTATIONS, EXPRESS OR IMPLIED, REGARDING TI RESOURCES OR USE THEREOF, INCLUDING BUT NOT LIMITED TO ACCURACY OR COMPLETENESS, TITLE, ANY EPIDEMIC FAILURE WARRANTY AND ANY IMPLIED WARRANTIES OF MERCHANTABILITY, FITNESS FOR A PARTICULAR PURPOSE, AND NON-INFRINGEMENT OF ANY THIRD PARTY INTELLECTUAL PROPERTY RIGHTS.

TI SHALL NOT BE LIABLE FOR AND SHALL NOT DEFEND OR INDEMNIFY YOU AGAINST ANY CLAIM, INCLUDING BUT NOT LIMITED TO ANY INFRINGEMENT CLAIM THAT RELATES TO OR IS BASED ON ANY COMBINATION OF PRODUCTS EVEN IF DESCRIBED IN TI RESOURCES OR OTHERWISE. IN NO EVENT SHALL TI BE LIABLE FOR ANY ACTUAL, DIRECT, SPECIAL, COLLATERAL, INDIRECT, PUNITIVE, INCIDENTAL, CONSEQUENTIAL OR EXEMPLARY DAMAGES IN CONNECTION WITH OR ARISING OUT OF TI RESOURCES OR USE THEREOF, AND REGARDLESS OF WHETHER TI HAS BEEN ADVISED OF THE POSSIBILITY OF SUCH DAMAGES.

You agree to fully indemnify TI and its representatives against any damages, costs, losses, and/or liabilities arising out of your non-compliance with the terms and provisions of this Notice.

This Notice applies to TI Resources. Additional terms apply to the use and purchase of certain types of materials, TI products and services. These include; without limitation, TI's standard terms for semiconductor products (<http://www.ti.com/sc/docs/stdterms.htm>), [evaluation modules](#), and [samples](http://www.ti.com/sc/docs/sampterm.htm) (<http://www.ti.com/sc/docs/sampterm.htm>).

Mailing Address: Texas Instruments, Post Office Box 655303, Dallas, Texas 75265
Copyright © 2017, Texas Instruments Incorporated