

PMP40182 Test Results

1 General

1.1 PURPOSE

Provide the detailed data for evaluating and verifying the PMP40182. The PMP40182 is the battery charge/discharge DC-DC converter with the MCU controlling port. It delivers up to 4V/10A charge and discharge power. The work mode is buck for charge the battery, and the boost for the discharge the battery. The converter could provide high efficiency with the good performance, which makes it an ideal choice for battery initialization converter. For all the testing applications, it's without the fan cooling. The Mother board is PMP40280; the PMP40182 should be mounted on the mother board for all the testing.

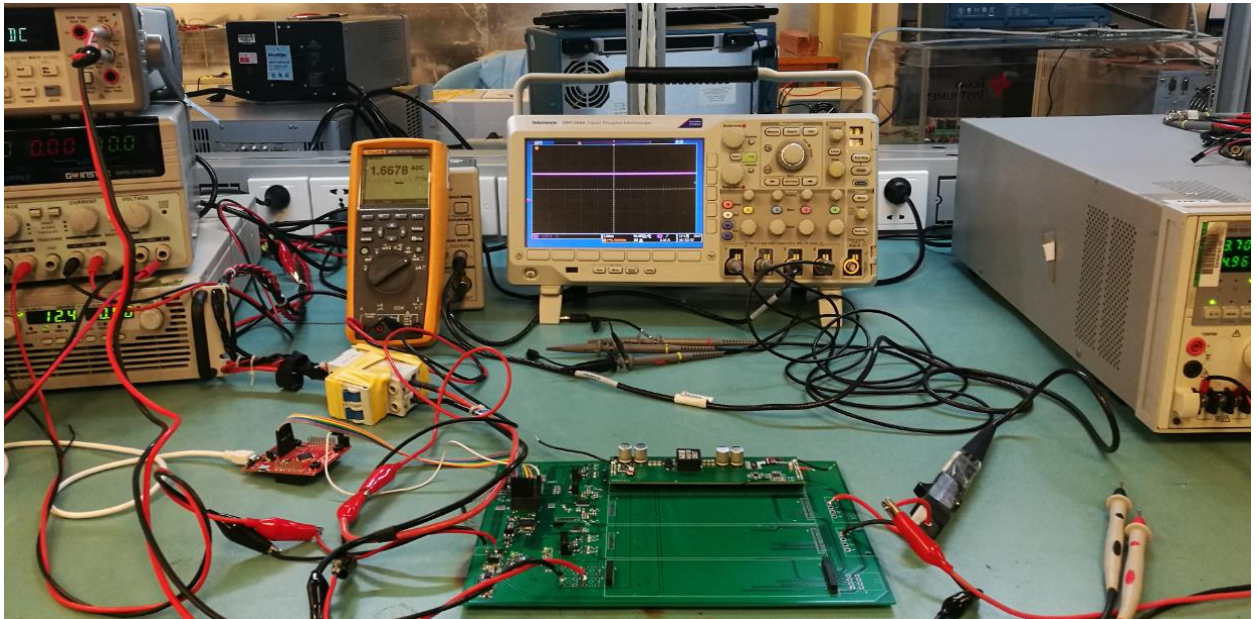
1.2 TEST EQUIPMENTS

Multi-meter: Fluke Multimeter 287C, Agilent 34401A, Fluke 8845A

DC Source: TDK-Lambda, DC Load: Chroma 63103A

Ambient Temperature at 25DegC

1.3 TEST Setup Photos



Testing Setup



Top View of the Board

Board Pins Assignment

Pin No.	J1 12V DC Input	Description	J2 Battery Output	Description
1	GND	Power Ground	B-	Battery -
2	GND	Power Ground	B-	Battery -
3	GND	Power Ground	B-	Battery -
4	12V+	12V power input	B-	Battery -
5	12V+	12V power input	B+	Battery +
6	12V+	12V power input	B+	Battery +
7	12V	Aux 12V	B+	Battery +
8	AGND	Analog Ground	B+	Battery +
9	+5V	Aux +5V	VSET	Output voltage threshold setting
10	-5V	Aux -5V	Fault	Fault signal, open drain
11	-5V	Aux -5V	ADC_V	Battery voltage output
12	+5V	Aux +5V	MD	MODE setting: 0 - Buck; 1 - Boost
13	AGND	Analog Ground	OUT_EN	Output on/off. 1 - on; 0 - off
14	12V	Aux 12V	VS_N	V bat - Input
15	12V+	12V power input	VS_P	V bat + Input
16	12V+	12V power input	VS_P	V bat + Input
17	12V+	12V power input	VS_N	V bat - Input
18	GND	Power Ground	IN_EN	Input on/off. 1 - on; 0 - off
19	GND	Power Ground	ADC_I	Charging/discharging current signal
20	GND	Power Ground	ISET	Charging/discharging current threshold
21			REF2048	Input reference voltage, onboard REF5020 could be bypassed by jumper
22			EN	Enable PWM output, 1 - on; 0 - off
23			B+	Battery +
24			B+	Battery +
25			B+	Battery +
26			B+	Battery +
27			B-	Battery -
28			B-	Battery -
29			B-	Battery -
30			B-	Battery -

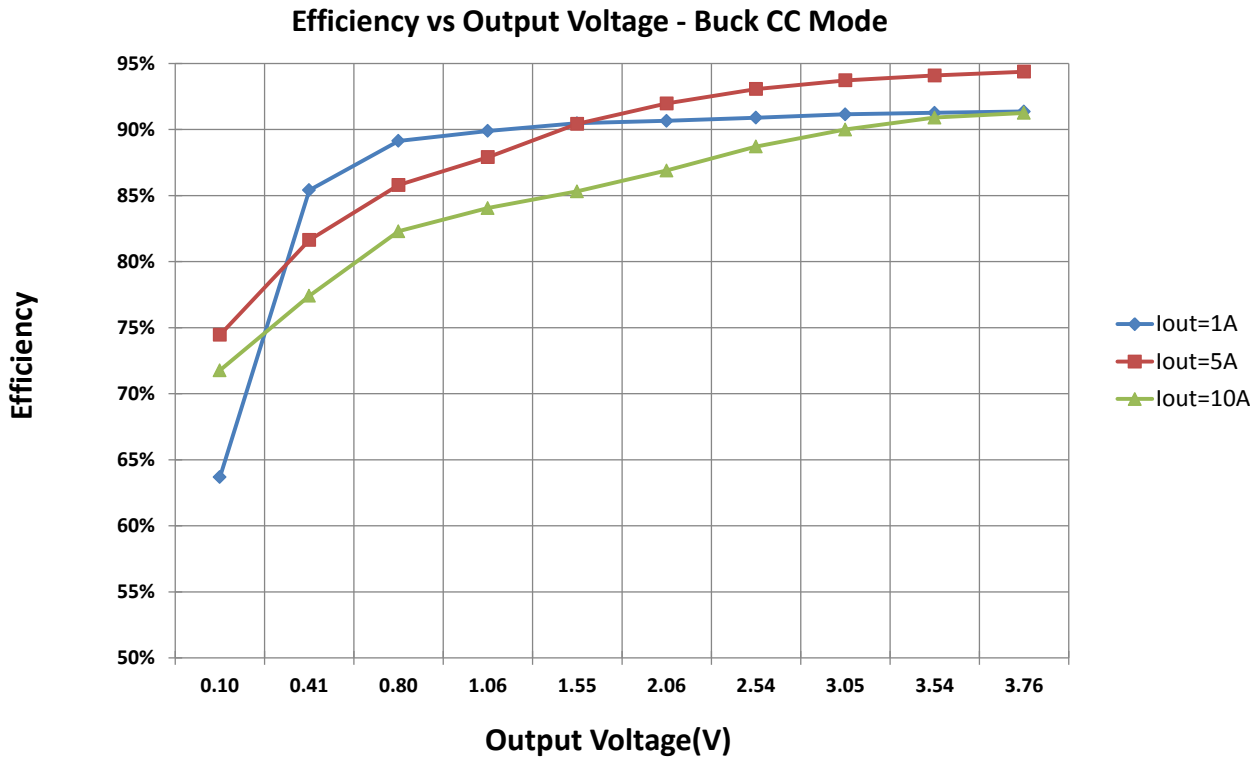
2 INPUT & Output CHARACTERISTICS

2.1: Buck CC Mode Efficiency vs Output

Vset=4.0V

Vin (V)	Iin (A)	Vout (V)	Iout (A)	Eff. (%)
1A				
12.459	0.0124	0.099	0.9960	63.7%
12.456	0.0385	0.411	0.9958	85.4%
12.452	0.0720	0.803	0.9958	89.1%
12.449	0.0940	1.056	0.9959	89.9%
12.444	0.1369	1.548	0.9960	90.5%
12.439	0.1816	2.055	0.9965	90.7%
12.433	0.2243	2.543	0.9970	90.9%
12.428	0.2689	3.054	0.9975	91.2%
12.423	0.3118	3.543	0.9979	91.3%
12.421	0.3305	3.758	0.9981	91.4%
5A				
12.436	0.2025	0.376	4.9827	74.5%
12.424	0.2991	0.609	4.9826	81.6%
12.412	0.4042	0.864	4.9830	85.8%
12.402	0.4851	1.061	4.9828	87.9%
12.379	0.6722	1.510	4.9831	90.4%
12.354	0.8767	1.999	4.9837	92.0%
12.329	1.0904	2.510	4.9843	93.1%
12.304	1.2965	2.999	4.9851	93.7%
12.278	1.5116	3.503	4.9856	94.1%
12.267	1.5946	3.703	4.9860	94.4%
10A				
12.365	0.7838	0.699	9.9540	71.8%
12.338	1.0071	0.966	9.9540	77.4%
12.298	1.3351	1.358	9.9540	82.3%
12.276	1.5171	1.573	9.9550	84.1%
12.256	1.6828	1.768	9.9550	85.3%
12.225	1.9329	2.063	9.9560	86.9%
12.172	2.3699	2.570	9.9570	88.7%
12.120	2.7935	3.060	9.9580	90.0%
12.066	3.2370	3.565	9.9590	90.9%

12.045	3.4070	3.760	9.9600	91.3%
--------	--------	-------	--------	-------

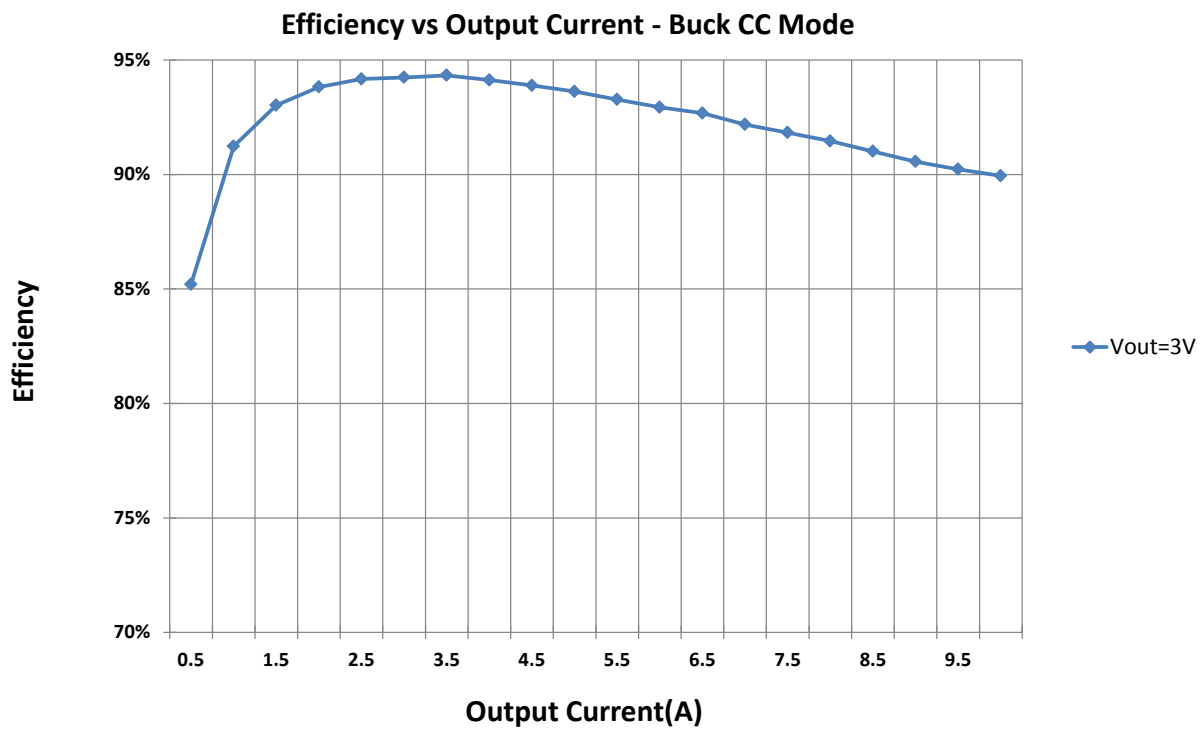
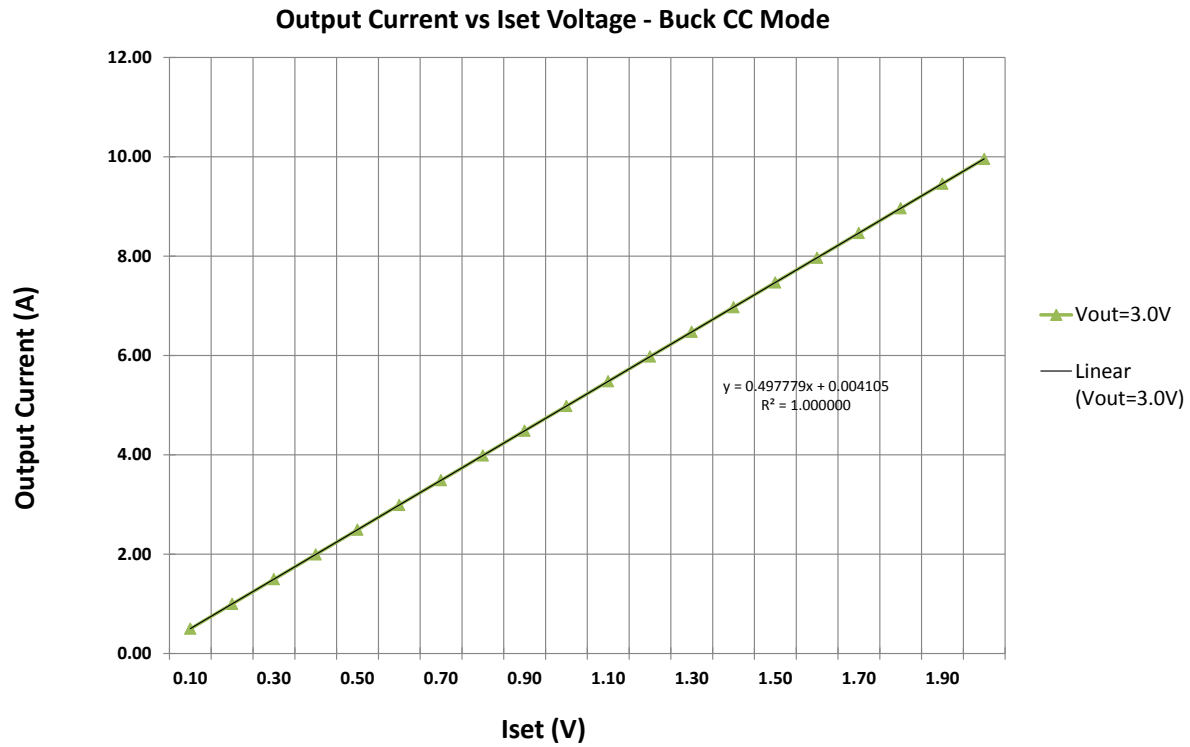


Buck CC Mode, Repeat Power Up

Vin (V)	Iin (A)	Vout (V)	Iout (A)	Eff. (%)	Number
5A					
12.304	1.2957	3.00	4.9856	93.7%	1
12.304	1.2959	3.00	4.9855	93.7%	2
12.304	1.2960	3.00	4.9854	93.7%	3
12.304	1.2960	3.00	4.9853	93.7%	4
12.304	1.2961	3.00	4.9854	93.7%	5

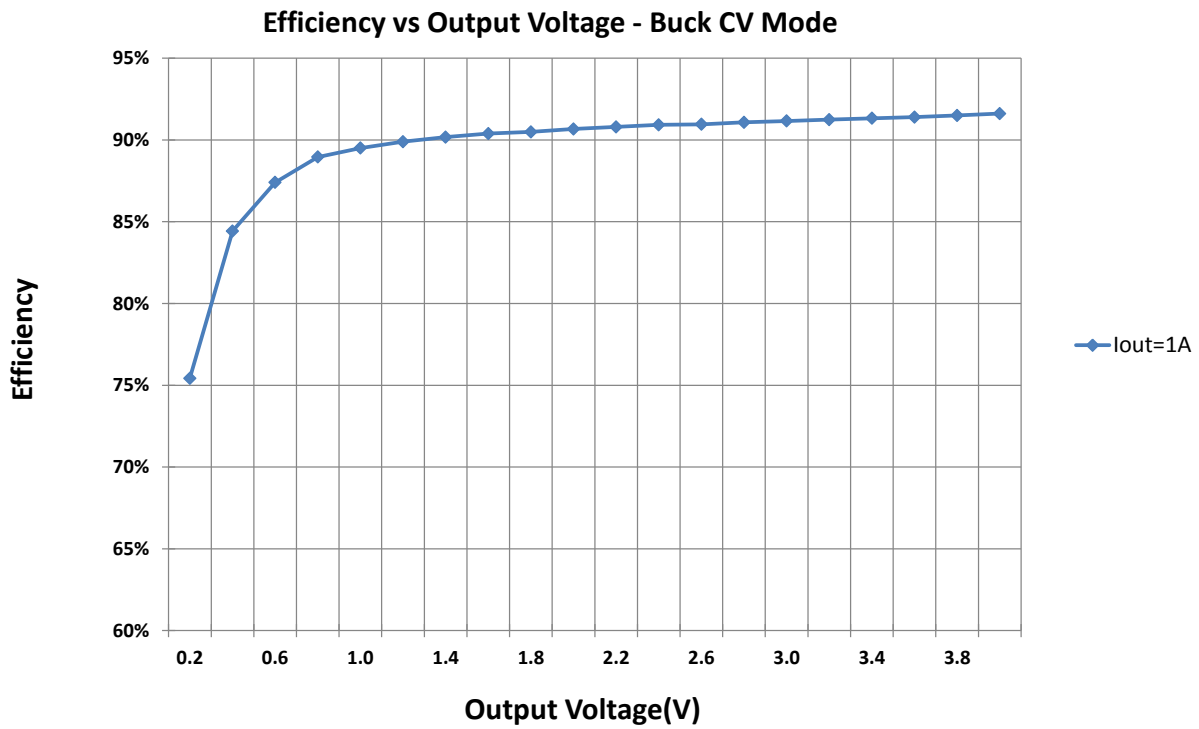
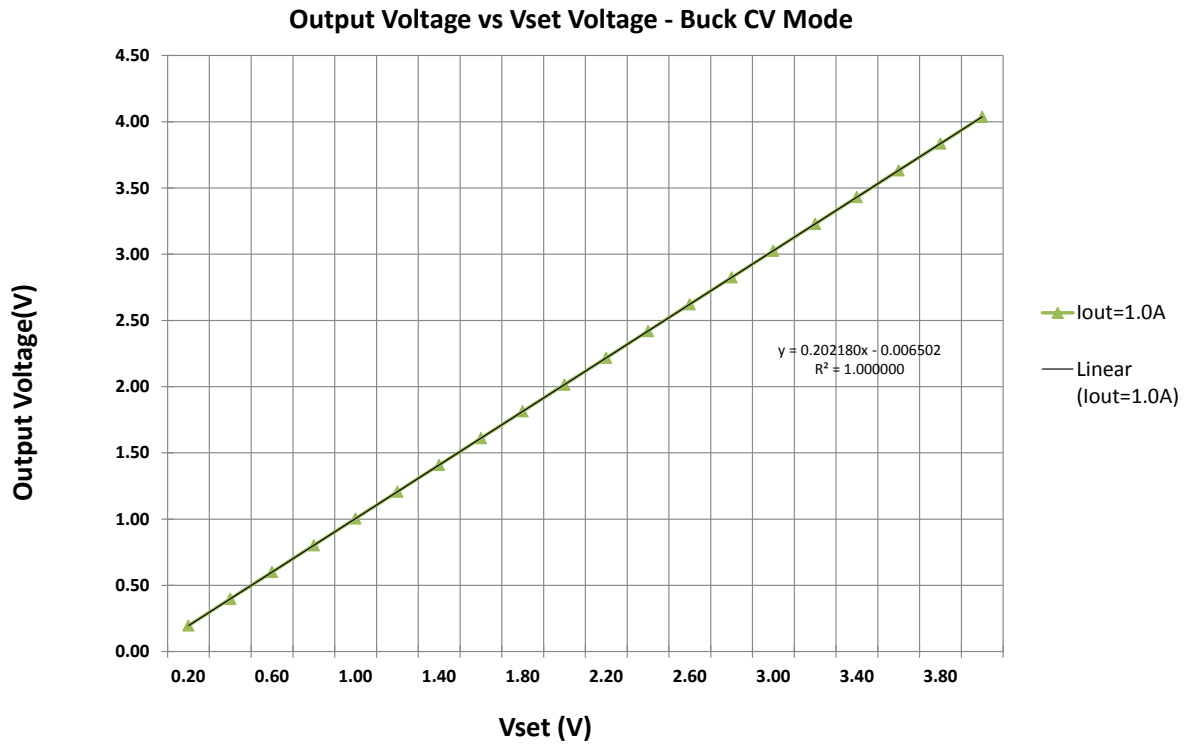
Buck CC Mode, Iset Curve
Vset=4.0V

Vin (V)	Iin (A)	Vout (V)	Iout (A)	Iset (V)	Eff. (%)
12.444	0.1417	3.006	0.4997	0.09967	85.2%
12.429	0.2638	2.996	0.9983	0.19972	91.2%
12.413	0.3896	3.006	1.4965	0.29971	93.0%
12.398	0.5164	3.011	1.9947	0.39970	93.8%
12.383	0.6413	3.000	2.4928	0.49969	94.2%
12.367	0.7716	3.006	2.9913	0.59973	94.2%
12.351	0.8984	3.000	3.4892	0.69972	94.3%
12.335	1.0324	3.006	3.9872	0.79710	94.1%
12.319	1.1688	3.014	4.4855	0.89976	93.9%
12.303	1.2996	3.004	4.9835	0.99974	93.6%
12.285	1.4403	3.011	5.4810	1.09970	93.3%
12.269	1.5731	3.000	5.9790	1.19970	92.9%
12.251	1.7184	3.013	6.4770	1.29980	92.7%
12.235	1.8550	3.000	6.9740	1.39970	92.2%
12.216	2.0054	3.011	7.4710	1.49970	91.8%
12.196	2.1716	3.040	7.9680	1.59970	91.5%
12.180	2.2997	3.011	8.4660	1.69980	91.0%
12.163	2.4421	3.001	8.9630	1.79980	90.6%
12.142	2.6165	3.030	9.4600	1.89980	90.2%
12.124	2.7589	3.021	9.9580	1.99980	89.9%



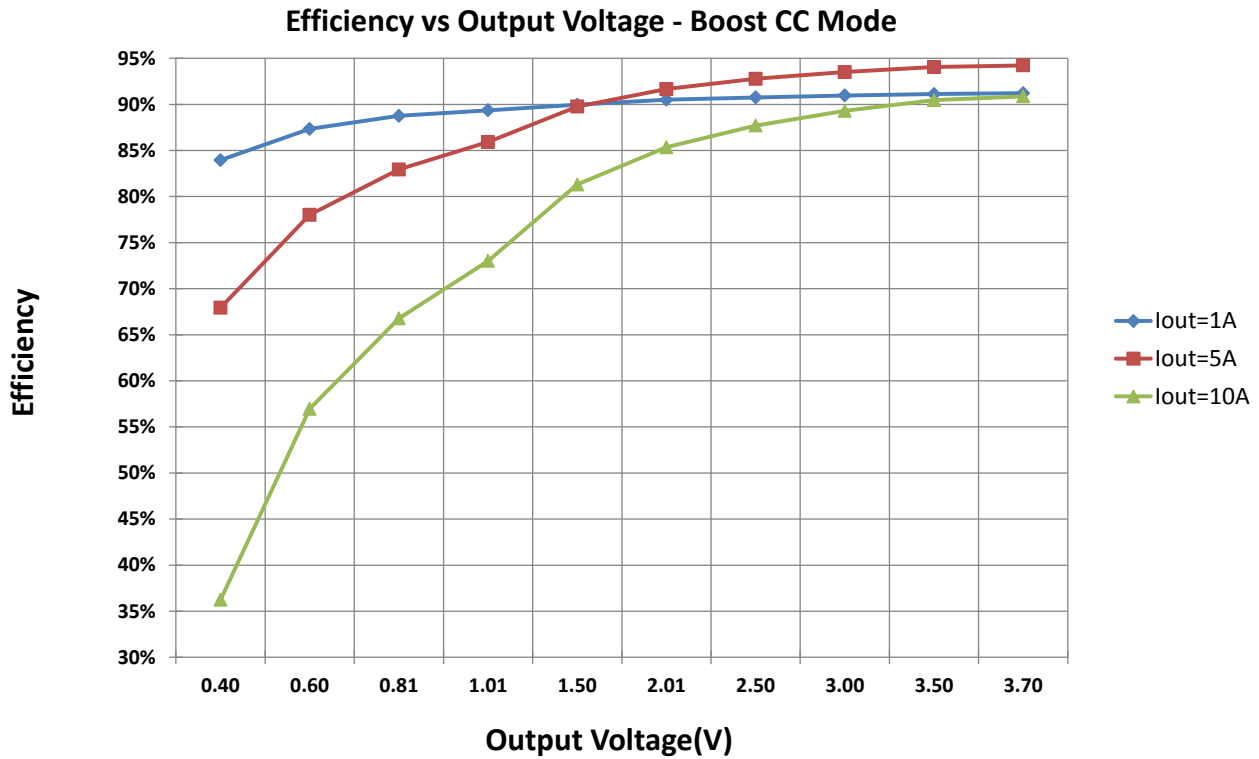
Buck CV Mode, Vset Curve
Iset=10A(2.00V)

Vin (V)	Iin (A)	Vout (V)	Iout (A)	Vset (V)	Eff. (%)
12.458	0.0207	0.1957	0.9940	0.1998	75.4%
12.456	0.0376	0.3978	0.9940	0.3998	84.4%
12.453	0.0548	0.6001	0.9940	0.5999	87.4%
12.450	0.0720	0.8022	0.9940	0.7998	89.0%
12.449	0.0896	1.0044	0.9940	0.9999	89.5%
12.446	0.1072	1.2066	0.9940	1.1999	89.9%
12.443	0.1248	1.4088	0.9940	1.3999	90.2%
12.440	0.1424	1.6109	0.9940	1.5999	90.4%
12.440	0.1601	1.8131	0.9940	1.7999	90.5%
12.433	0.1777	2.0153	0.9940	1.9999	90.7%
12.431	0.1953	2.2175	0.9941	2.1999	90.8%
12.431	0.2128	2.4197	0.9940	2.4000	90.9%
12.430	0.2305	2.6218	0.9940	2.5999	91.0%
12.428	0.2480	2.8240	0.9940	2.8000	91.1%
12.424	0.2656	3.0262	0.9940	3.0000	91.2%
12.423	0.2831	3.2284	0.9940	3.2000	91.2%
12.421	0.3006	3.4306	0.9940	3.4000	91.3%
12.418	0.3182	3.6328	0.9941	3.6000	91.4%
12.415	0.3356	3.8349	0.9941	3.8000	91.5%
12.410	0.3530	4.0371	0.9941	4.0001	91.6%



2.2: Boost CC Mode Efficiency vs Output
Vset=4.0V

Vin (V)	Iin (A)	Vout (V)	Iout (A)	Eff. (%)
1A				
12.006	0.0282	0.4032	1.0003	84.0%
12.008	0.0440	0.6048	1.0003	87.3%
12.009	0.0596	0.8065	0.9999	88.8%
12.011	0.0750	1.0081	0.9999	89.4%
12.014	0.1124	1.5019	0.9995	90.0%
12.018	0.1509	2.0063	0.9987	90.5%
12.021	0.1884	2.5004	0.9981	90.7%
12.025	0.2267	3.0043	0.9975	91.0%
12.028	0.2642	3.4986	0.9968	91.1%
12.029	0.2796	3.7002	0.9965	91.2%
5A				
12.014	0.1135	0.4024	4.9876	67.9%
12.022	0.1955	0.6040	4.9877	78.0%
12.029	0.2769	0.8053	4.9874	82.9%
12.037	0.3584	1.0069	4.9872	85.9%
12.055	0.5573	1.5008	4.9870	89.8%
12.073	0.7589	2.0047	4.9862	91.7%
12.091	0.9596	2.5086	4.9855	92.8%
12.109	1.1558	3.0026	4.9848	93.5%
12.127	1.3553	3.5060	4.9843	94.1%
12.134	1.4348	3.7070	4.9841	94.2%
10A				
12.015	0.1216	0.4045	9.9640	36.3%
12.030	0.2868	0.6078	9.9640	57.0%
12.044	0.4421	0.8004	9.9640	66.8%
12.059	0.6049	1.0026	9.9640	73.0%
12.095	1.0098	1.5076	9.9640	81.3%
12.131	1.4040	2.0031	9.9630	85.3%
12.167	1.7947	2.4991	9.9630	87.7%
12.203	2.1913	3.0054	9.9630	89.3%
12.237	2.5794	3.5024	9.9630	90.5%
12.252	2.7394	3.7070	9.9630	90.9%

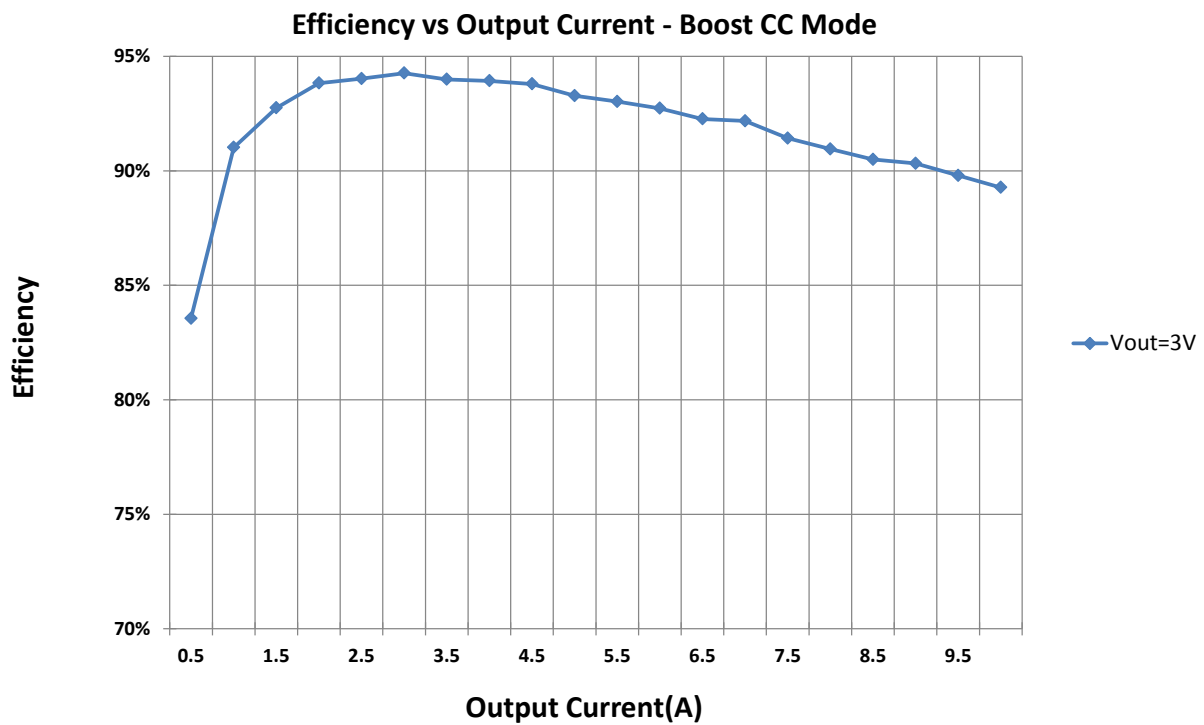
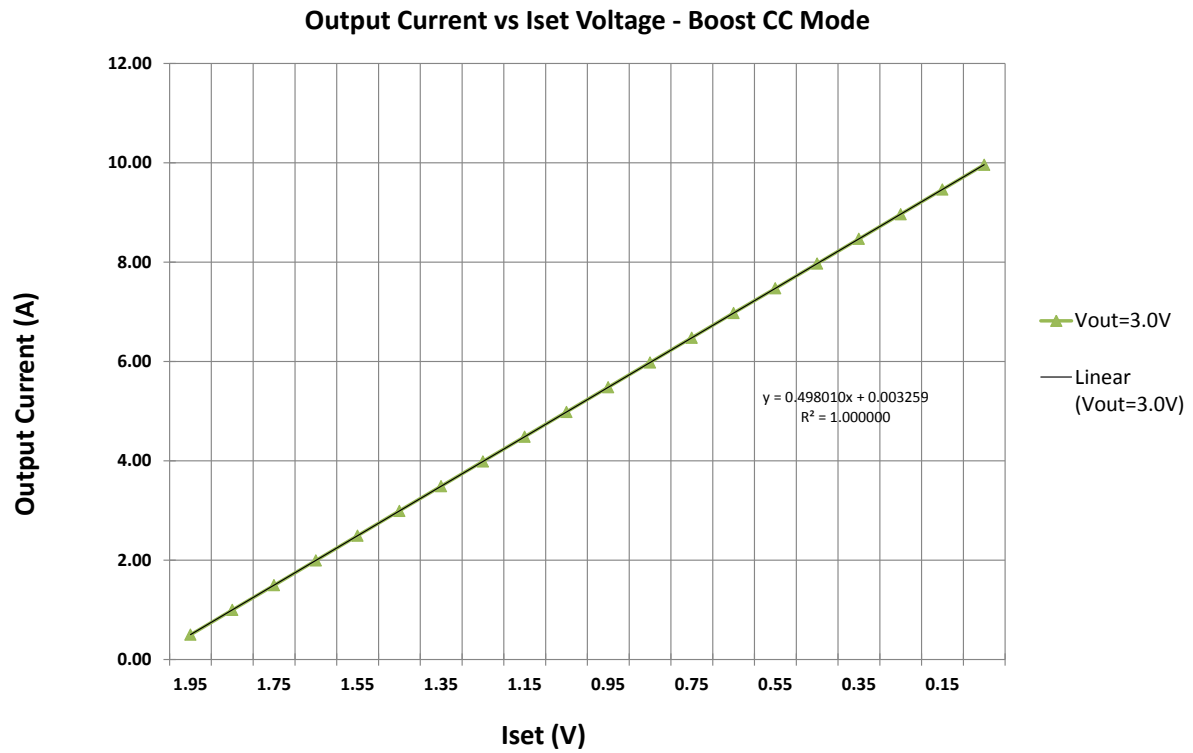


Boost CC Mode, Repeat Power Up

Vin (V)	Iin (A)	Vout (V)	Iout (A)	Eff. (%)	Number
5A					
12.110	1.1568	3.00	4.9864	93.6%	1
12.110	1.1563	3.00	4.9863	93.6%	2
12.110	1.1561	3.00	4.9863	93.6%	3
12.110	1.1559	3.00	4.9862	93.6%	4
12.110	1.1557	3.00	4.9862	93.6%	5

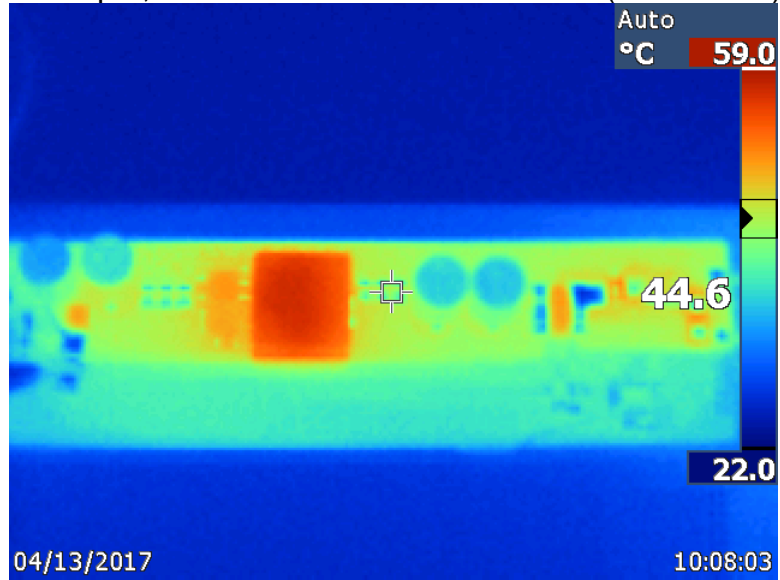
Boost CC Mode, Iset Curve
Vset=4.0V

Vin (V)	Iin (A)	Vout (V)	Iout (A)	Iset (V)	Eff. (%)
12.014	0.1042	3.000	0.4994	1.94770	83.6%
12.025	0.2266	3.000	0.9979	1.84770	91.0%
12.036	0.3459	3.000	1.4962	1.74780	92.8%
12.047	0.4661	3.000	1.9947	1.64780	93.8%
12.058	0.5833	3.000	2.4933	1.54770	94.0%
12.068	0.7010	3.000	2.9915	1.44770	94.3%
12.079	0.8147	3.000	3.4898	1.34770	94.0%
12.089	0.9297	3.000	3.9884	1.24770	93.9%
12.100	1.0434	3.000	4.4866	1.14771	93.8%
12.110	1.1519	3.000	4.9847	1.04773	93.3%
12.120	1.2625	3.000	5.4827	0.94774	93.0%
12.130	1.3717	3.000	5.9810	0.84768	92.7%
12.138	1.4775	3.000	6.4790	0.74769	92.3%
12.148	1.5880	3.000	6.9760	0.64771	92.2%
12.157	1.6862	3.000	7.4740	0.54772	91.4%
12.166	1.7879	3.000	7.9720	0.44767	91.0%
12.176	1.8884	3.000	8.4690	0.34768	90.5%
12.185	1.9938	3.000	8.9660	0.24769	90.3%
12.194	2.0908	3.000	9.4640	0.14770	89.8%
12.203	2.1862	3.000	9.9610	0.04765	89.3%

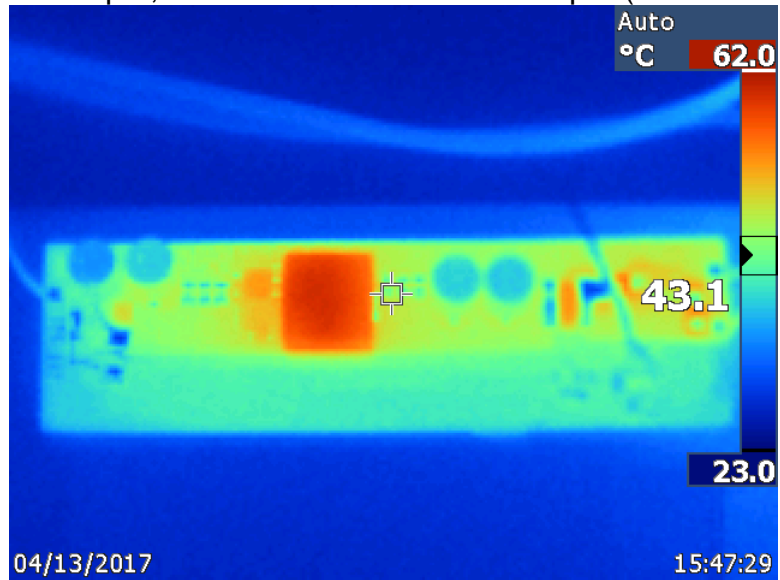


3 IR Scan Thermal Gradient (Without Fan Cooling)

12V Input, Buck CC Mode 10A/3.7V Load (15 minutes)



12V Output, Boost CC Mode 10A/3.7V Input (15 minutes)



IMPORTANT NOTICE FOR TI DESIGN INFORMATION AND RESOURCES

Texas Instruments Incorporated ("TI") technical, application or other design advice, services or information, including, but not limited to, reference designs and materials relating to evaluation modules, (collectively, "TI Resources") are intended to assist designers who are developing applications that incorporate TI products; by downloading, accessing or using any particular TI Resource in any way, you (individually or, if you are acting on behalf of a company, your company) agree to use it solely for this purpose and subject to the terms of this Notice.

TI's provision of TI Resources does not expand or otherwise alter TI's applicable published warranties or warranty disclaimers for TI products, and no additional obligations or liabilities arise from TI providing such TI Resources. TI reserves the right to make corrections, enhancements, improvements and other changes to its TI Resources.

You understand and agree that you remain responsible for using your independent analysis, evaluation and judgment in designing your applications and that you have full and exclusive responsibility to assure the safety of your applications and compliance of your applications (and of all TI products used in or for your applications) with all applicable regulations, laws and other applicable requirements. You represent that, with respect to your applications, you have all the necessary expertise to create and implement safeguards that (1) anticipate dangerous consequences of failures, (2) monitor failures and their consequences, and (3) lessen the likelihood of failures that might cause harm and take appropriate actions. You agree that prior to using or distributing any applications that include TI products, you will thoroughly test such applications and the functionality of such TI products as used in such applications. TI has not conducted any testing other than that specifically described in the published documentation for a particular TI Resource.

You are authorized to use, copy and modify any individual TI Resource only in connection with the development of applications that include the TI product(s) identified in such TI Resource. NO OTHER LICENSE, EXPRESS OR IMPLIED, BY ESTOPPEL OR OTHERWISE TO ANY OTHER TI INTELLECTUAL PROPERTY RIGHT, AND NO LICENSE TO ANY TECHNOLOGY OR INTELLECTUAL PROPERTY RIGHT OF TI OR ANY THIRD PARTY IS GRANTED HEREIN, including but not limited to any patent right, copyright, mask work right, or other intellectual property right relating to any combination, machine, or process in which TI products or services are used. Information regarding or referencing third-party products or services does not constitute a license to use such products or services, or a warranty or endorsement thereof. Use of TI Resources may require a license from a third party under the patents or other intellectual property of the third party, or a license from TI under the patents or other intellectual property of TI.

TI RESOURCES ARE PROVIDED "AS IS" AND WITH ALL FAULTS. TI DISCLAIMS ALL OTHER WARRANTIES OR REPRESENTATIONS, EXPRESS OR IMPLIED, REGARDING TI RESOURCES OR USE THEREOF, INCLUDING BUT NOT LIMITED TO ACCURACY OR COMPLETENESS, TITLE, ANY EPIDEMIC FAILURE WARRANTY AND ANY IMPLIED WARRANTIES OF MERCHANTABILITY, FITNESS FOR A PARTICULAR PURPOSE, AND NON-INFRINGEMENT OF ANY THIRD PARTY INTELLECTUAL PROPERTY RIGHTS.

TI SHALL NOT BE LIABLE FOR AND SHALL NOT DEFEND OR INDEMNIFY YOU AGAINST ANY CLAIM, INCLUDING BUT NOT LIMITED TO ANY INFRINGEMENT CLAIM THAT RELATES TO OR IS BASED ON ANY COMBINATION OF PRODUCTS EVEN IF DESCRIBED IN TI RESOURCES OR OTHERWISE. IN NO EVENT SHALL TI BE LIABLE FOR ANY ACTUAL, DIRECT, SPECIAL, COLLATERAL, INDIRECT, PUNITIVE, INCIDENTAL, CONSEQUENTIAL OR EXEMPLARY DAMAGES IN CONNECTION WITH OR ARISING OUT OF TI RESOURCES OR USE THEREOF, AND REGARDLESS OF WHETHER TI HAS BEEN ADVISED OF THE POSSIBILITY OF SUCH DAMAGES.

You agree to fully indemnify TI and its representatives against any damages, costs, losses, and/or liabilities arising out of your non-compliance with the terms and provisions of this Notice.

This Notice applies to TI Resources. Additional terms apply to the use and purchase of certain types of materials, TI products and services. These include; without limitation, TI's standard terms for semiconductor products (<http://www.ti.com/sc/docs/stdterms.htm>), [evaluation modules](#), and [samples](http://www.ti.com/sc/docs/sampterm.htm) (<http://www.ti.com/sc/docs/sampterm.htm>).

Mailing Address: Texas Instruments, Post Office Box 655303, Dallas, Texas 75265
Copyright © 2017, Texas Instruments Incorporated