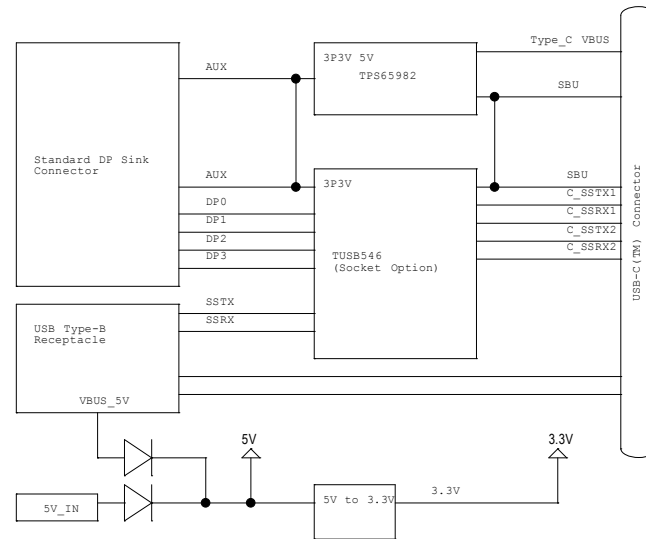
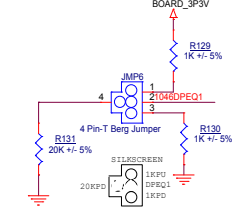
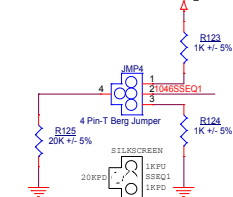
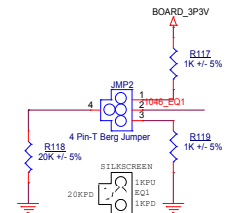


TUSB546 - INT017A USB-C(TM) Enabler Board

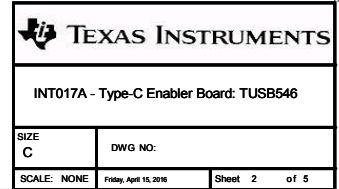
REVA2



Config Switch



	DCI	non-DCI
23 CTL1/HPDIN	DP ENABLE in GPIO mode HPD in I2C mode	DP Enable in GPIO mode, Unused in I2C mode
29 CAD_SNK/DCI_DAT	AUX Snoop EN in GPIO mode DCI_DAT in I2C mode	AUX Snoop EN in GPIO mode EN in I2C mode
32 DCI_CLK	HPD in GPIO mode DCI_CLK in I2C mode	HPD



TUSB546 - INT017A USB-C(TM) Enabler Board

Test Purpose
Headers and
Options

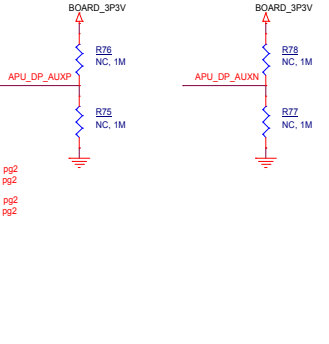
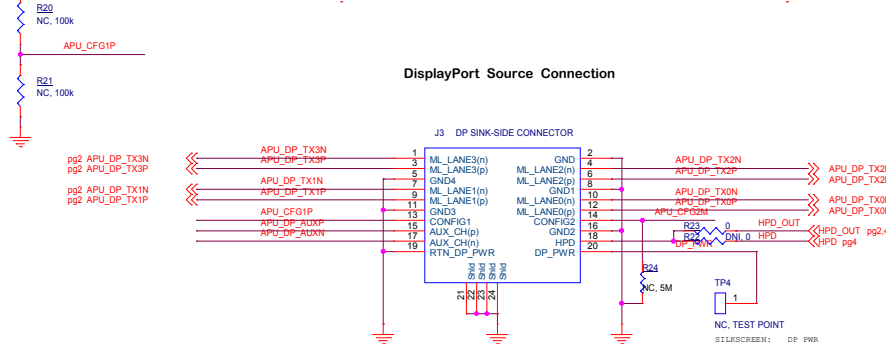
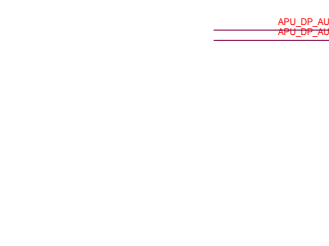
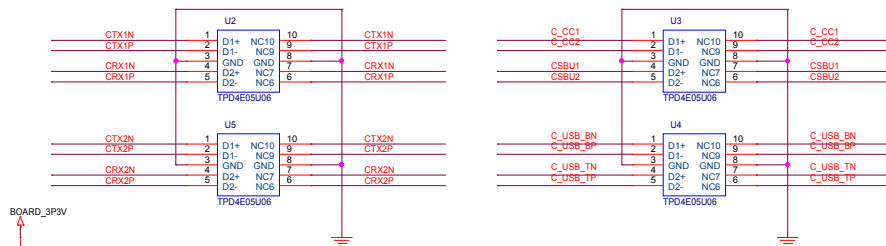
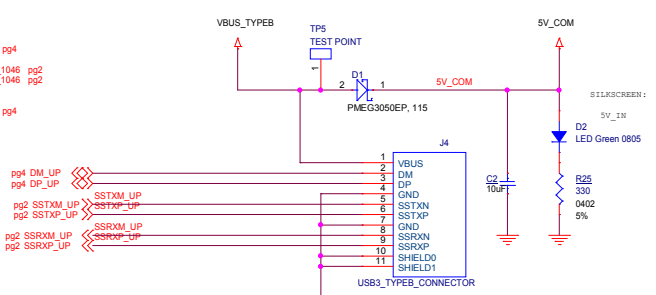
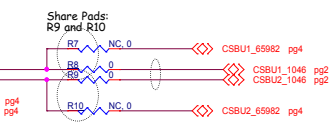
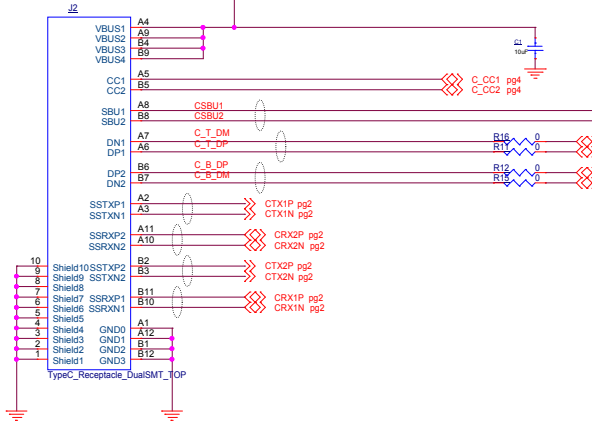
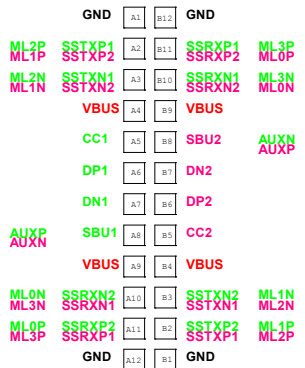
USB and DP Connectors

USB Host
Connection

ESD
Components

DisplayPort Source Connection

TypeC Connector and Source
Pin Mapping



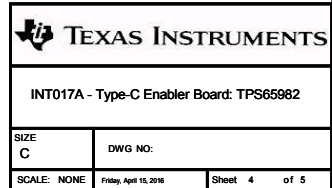
NOTE: ALL DIFF PAIRS ARE
ROUTED 85 TO 90 OHMS
DIFFERENTIAL AND 50 OHMS
COMMON MODE. ALL OTHER
TRACES ARE 50 OHM.

TEXAS INSTRUMENTS

INT017A - USB-C Enabler Board: Connectors

SIZE C	DWG NO:
SCALE: NONE	Friday, April 15, 2016
Sheet 3	of 5

NOTE: ALL DIFF PAIRS ARE ROUTED 85 TO 90 OHMS DIFFERENTIAL AND 50 OHM COMMON MODE. ALL OTHER TRACES ARE 50 OHM.



TUSB546 - INT017A USB-C(TM) Enabler Board

Power

