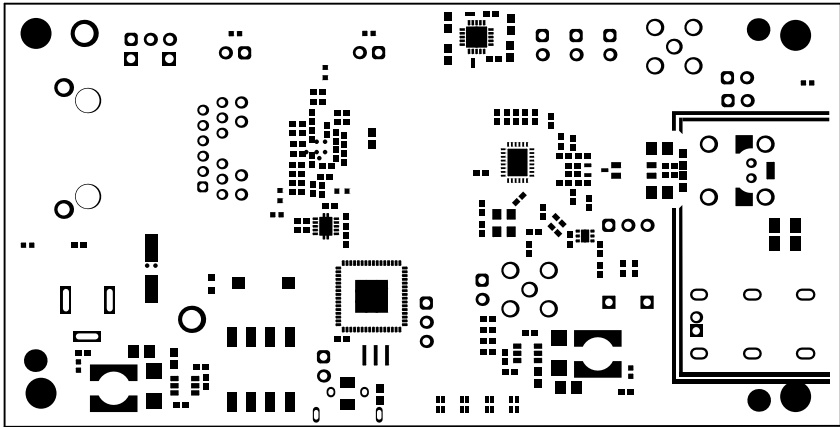


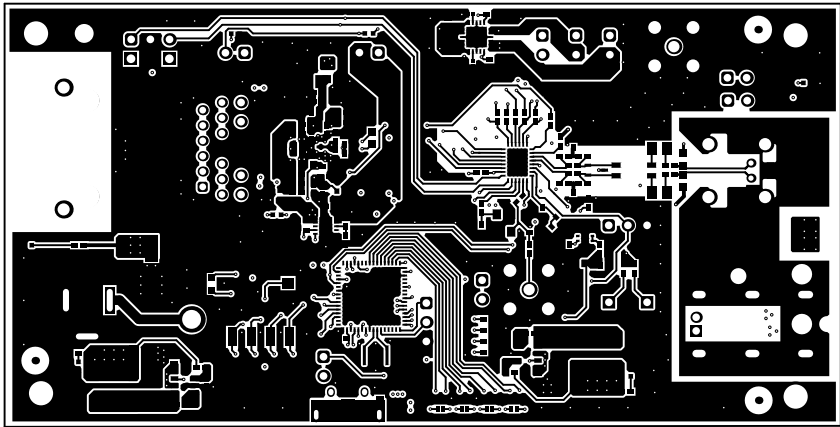
ALL ARTWORK VIEWED FROM TOP SIDE	BOARD #: HSDC123	REV: A	SUN REV: Not In VersionControl
LAYER NAME = Top Overlay	TID #: N/A		
PLOT NAME = Top Overlay	GENERATED : 4/19/2022 3:13:09 PM	TEXAS INSTRUMENTS	





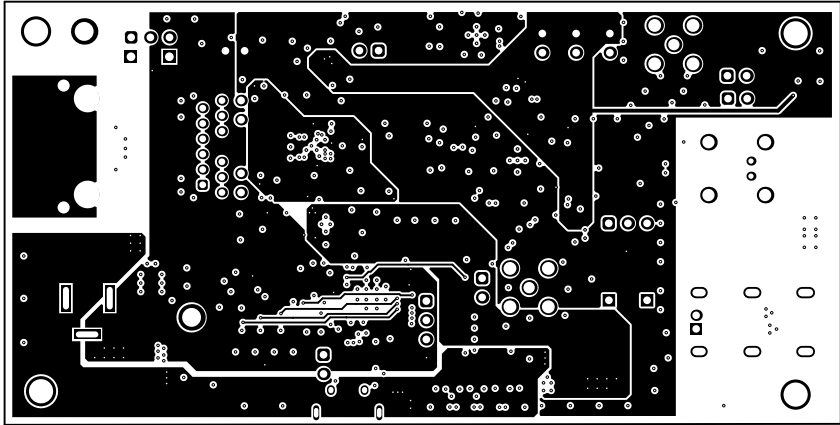
ALL ARTWORK VIEWED FROM TOP SIDE	BOARD #: HSDC123	REV: A	SUN REV: Not In VersionControl
LAYER NAME = Top Solder	TID #: N/A		
PLOT NAME = Top Solder Mask	GENERATED : 4/19/2022 3:13:09 PM	TEXAS INSTRUMENTS	





ALL ARTWORK VIEWED FROM TOP SIDE	BOARD #: HSDC123	REV: A	SUN REV: Not In VersionControl
LAYER NAME = Top Layer	TID #: N/A		
PLOT NAME = Top Layer	GENERATED : 4/19/2022	3:13:09 PM	TEXAS INSTRUMENTS

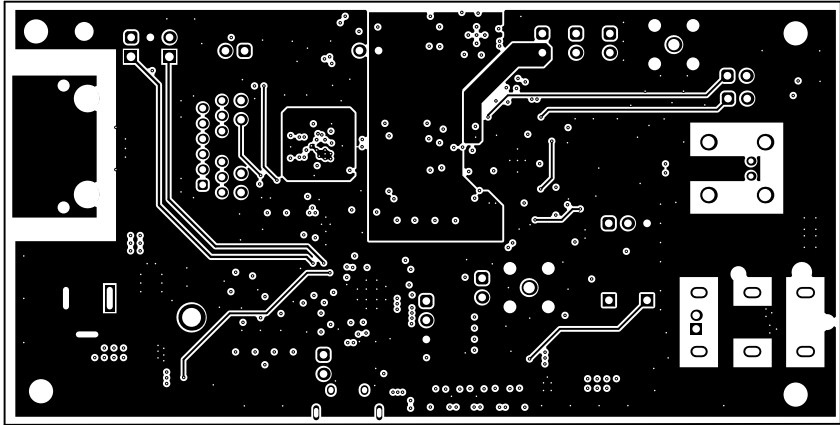




ALL ARTWORK VIEWED FROM TOP SIDE	BOARD #: HSDC123	REV: A	SUN REV: Not In VersionControl
LAYER NAME = UCC1	TID #: N/A		
PLOT NAME = Signal Layer 1	GENERATED : 4/19/2022	3:13:09 PM	TEXAS INSTRUMENTS

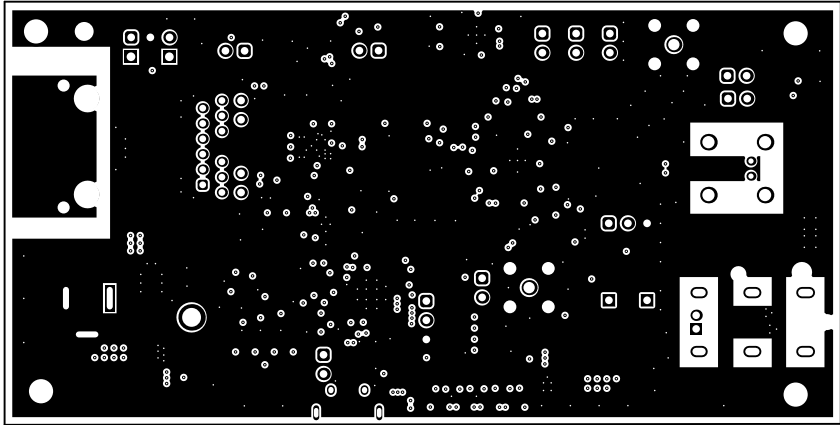






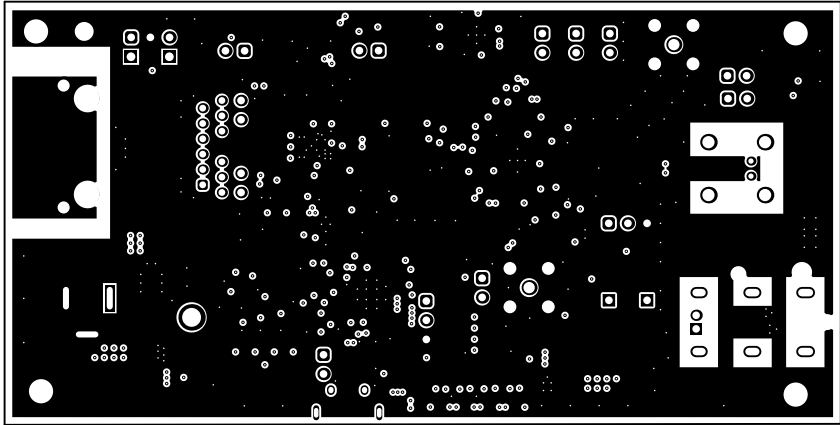
ALL ARTWORK VIEWED FROM TOP SIDE	BOARD #: HSDC123	REV: A	SUN REV: Not In VersionControl
LAYER NAME = UCC2	TID #: N/A		
PLOT NAME = Signal Layer 2	GENERATED : 4/19/2022	3:13:09 PM	TEXAS INSTRUMENTS





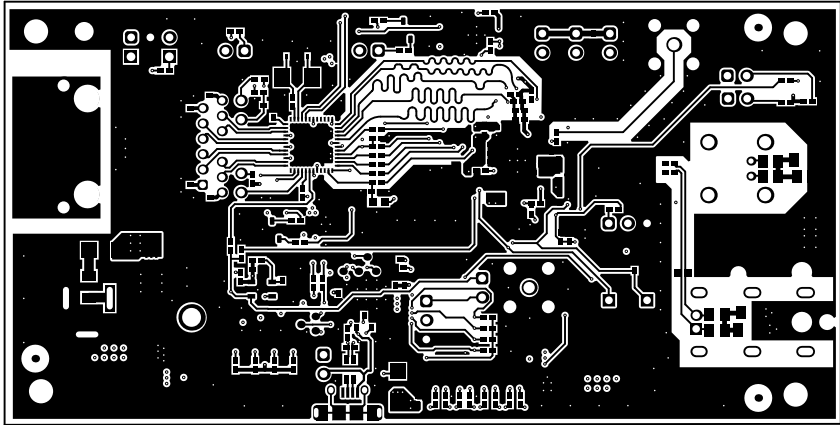
ALL ARTWORK VIEWED FROM TOP SIDE	BOARD #: HSDC123	REV: A	SUN REV: Not In VersionControl
LAYER NAME = GND1	TID #: N/A		
PLOT NAME = Signal Layer 3	GENERATED : 4/19/2022	3:13:09 PM	TEXAS INSTRUMENTS





ALL ARTWORK VIEWED FROM TOP SIDE	BOARD #: HSDC123	REV: A	SUN REV: Not In VersionControl
LAYER NAME = GND2	TID #: N/A		
PLOT NAME = Signal Layer 4	GENERATED : 4/19/2022 3:13:10 PM	TEXAS INSTRUMENTS	

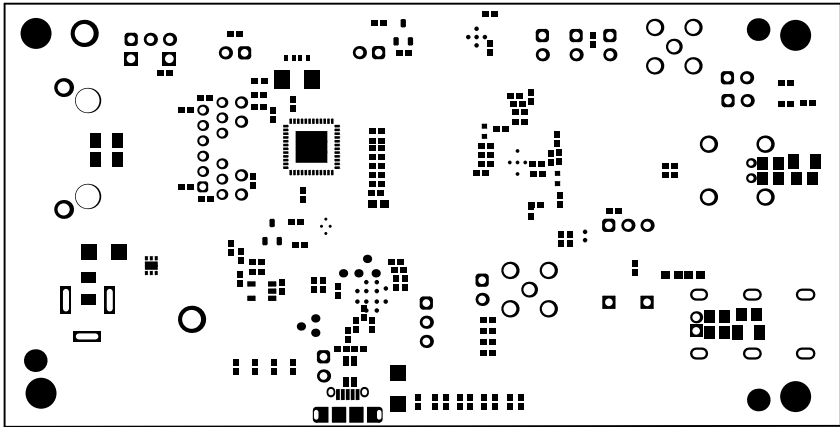




ALL ARTWORK VIEWED FROM TOP SIDE	BOARD #: HSDC123	REV: A	SUN REV: Not In VersionControl
LAYER NAME = Bottom Layer	TID #: N/A		
PLOT NAME = Bottom Layer	GENERATED : 4/19/2022	3:13:10 PM	TEXAS INSTRUMENTS



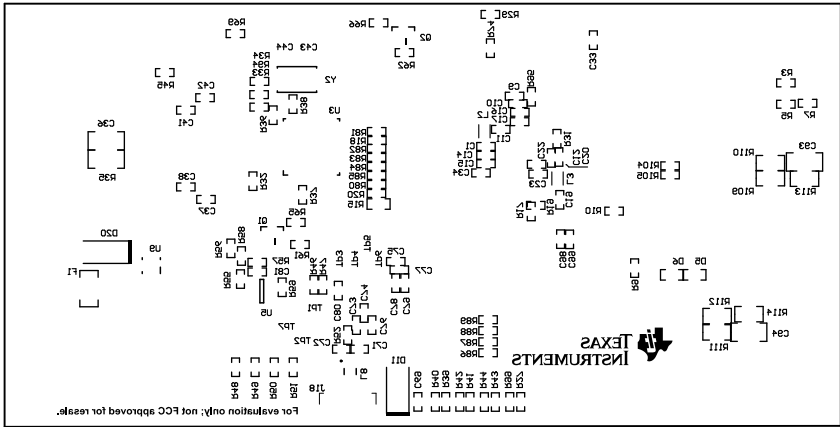




ALL ARTWORK VIEWED FROM TOP SIDE	BOARD #:	HSDC123	REV:	A	SUN REV:	Not In VersionControl
LAYER NAME = Bottom Solder	TID #:	N/A				
PLOT NAME = Bottom Solder Mask	GENERATED	: 4/19/2022	3:13:10 PM	TEXAS INSTRUMENTS		

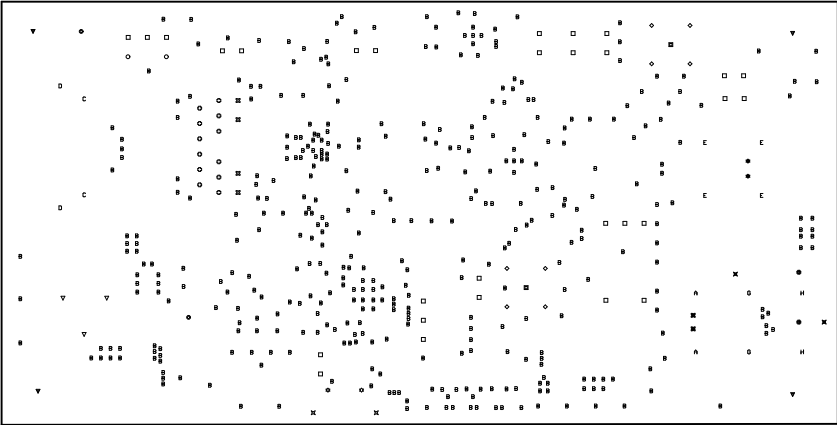


ALL ARTWORK VIEWED FROM TOP SIDE	BOARD #: HSDC123	REV: A	SUN REV: Not In VersionControl
LAYER NAME = Bottom Overlay	TID #: N/A		
PLOT NAME = Bottom Overlay	GENERATED : 4/19/2022 3:13:10 PM	TEXAS INSTRUMENTS	



Symbol	Quantity	Finished Hole Size	Plated	Hole Type	Drill Layer Pair	Hole Tolerance
✕	2	62.99mil (1.600mm)	NPTH	Round	Top Layer - Bottom Layer	±1.97mil
⚙	2	86.61mil (2.200mm)	NPTH	Round	Top Layer - Bottom Layer	
C	2	124.02mil (3.150mm)	NPTH	Round	Top Layer - Bottom Layer	
B	400	7.87mil (0.200mm)	PTH	Round	Top Layer - Bottom Layer	
✳	2	27.56mil (0.700mm)	PTH	Round	Top Layer - Bottom Layer	
⊕	12	35.43mil (0.900mm)	PTH	Round	Top Layer - Bottom Layer	
✂	2	39.37mil (1.000mm)	PTH	Round	Top Layer - Bottom Layer	
□	29	40.00mil (1.016mm)	PTH	Round	Top Layer - Bottom Layer	
⊗	4	40.16mil (1.020mm)	PTH	Round	Top Layer - Bottom Layer	
○	2	45.28mil (1.150mm)	PTH	Round	Top Layer - Bottom Layer	
■	2	59.06mil (1.500mm)	PTH	Round	Top Layer - Bottom Layer	±1.97mil
D	2	62.99mil (1.600mm)	PTH	Round	Top Layer - Bottom Layer	
E	4	63.78mil (1.620mm)	PTH	Round	Top Layer - Bottom Layer	
◇	8	66.93mil (1.700mm)	PTH	Round	Top Layer - Bottom Layer	
⦿	2	98.43mil (2.500mm)	PTH	Round	Top Layer - Bottom Layer	
▼	4	125.98mil (3.200mm)	PTH	Round	Top Layer - Bottom Layer	
⊗	2	23.62mil (0.600mm)	PTH	Slot	Top Layer - Bottom Layer	
✳	2	27.56mil (0.700mm)	PTH	Slot	Top Layer - Bottom Layer	
▽	3	31.50mil (0.800mm)	PTH	Slot	Top Layer - Bottom Layer	
Ⓐ	2	39.37mil (1.000mm)	PTH	Slot	Top Layer - Bottom Layer	
G	2	39.37mil (1.000mm)	PTH	Slot	Top Layer - Bottom Layer	
H	2	39.37mil (1.000mm)	PTH	Slot	Top Layer - Bottom Layer	
	492 Total					

Slot definitions : Routed Path Length = Calculated from tool start centre position to tool end centre position.  
Hole Length = Routed Path Length + Tool Size + Slot length as defined in the PCB layout



ALL ARTWORK VIEWED FROM TOP SIDE	BOARD #: HSDC123	REV: A	SUN REV: Not In VersionControl
LAYER NAME = Drill Drawing	TID #: N/A		
PLOT NAME = Drill Drawing	GENERATED : 4/19/2022 3:13:11 PM	TEXAS INSTRUMENTS	



