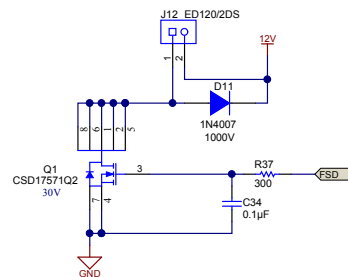
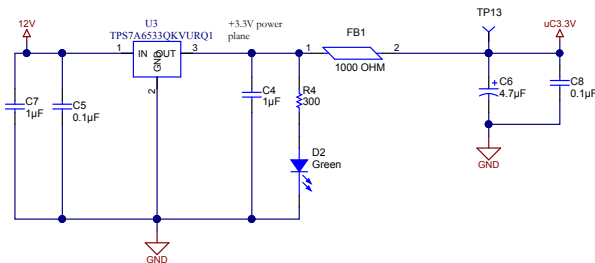
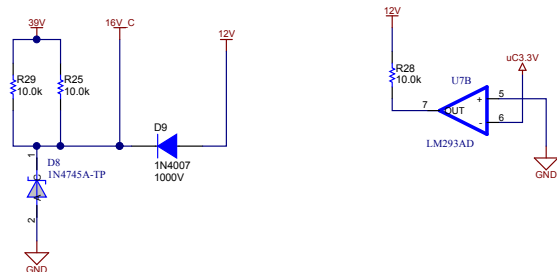
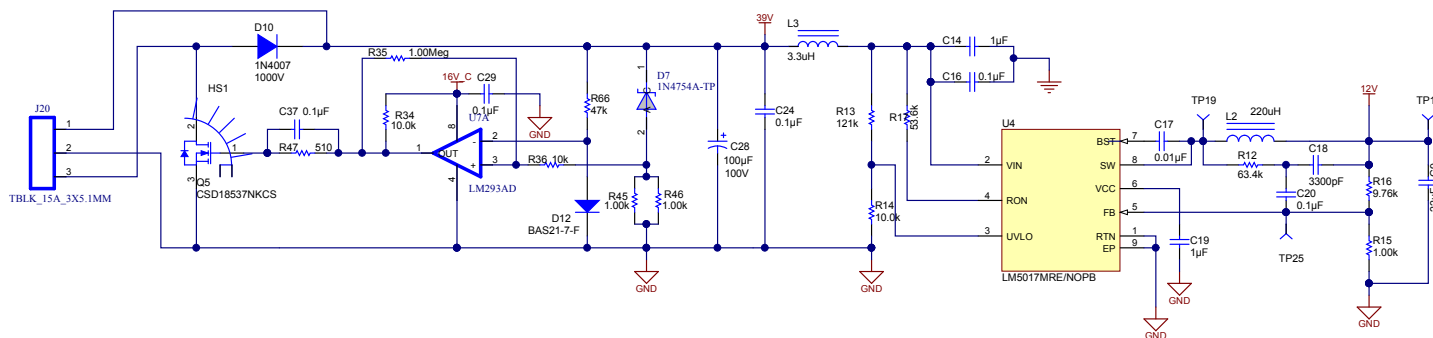


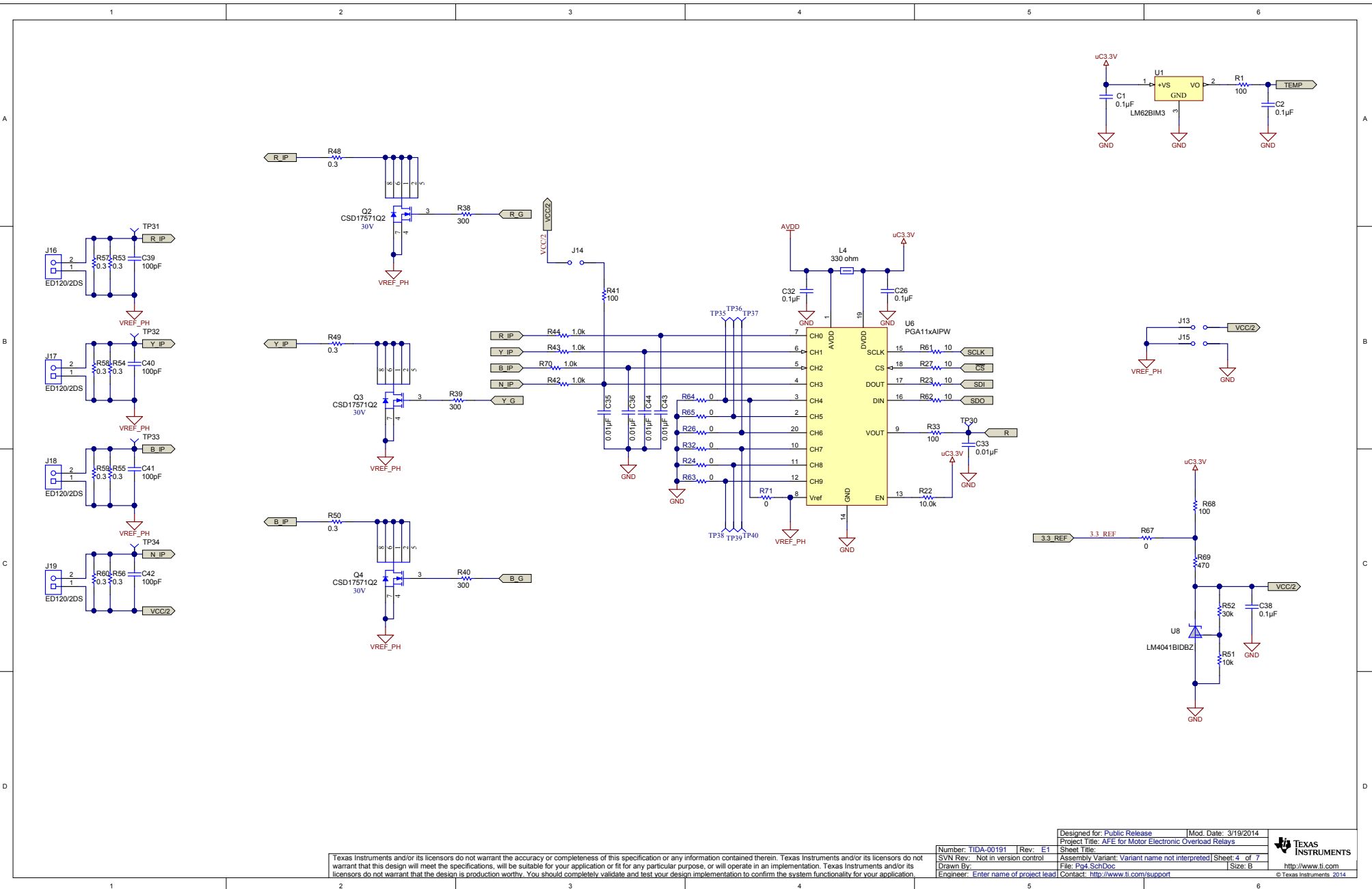
Texas Instruments and/or its licensors do not warrant the accuracy or completeness of this specification or any information contained therein. Texas Instruments and/or its licensors do not warrant that this design will meet the specifications, will be suitable for your application or fit for any particular purpose, or will operate in an implementation. Texas Instruments and/or its licensors do not warrant that the design is production worthy. You should completely validate and test your design implementation to confirm the system functionality for your application.

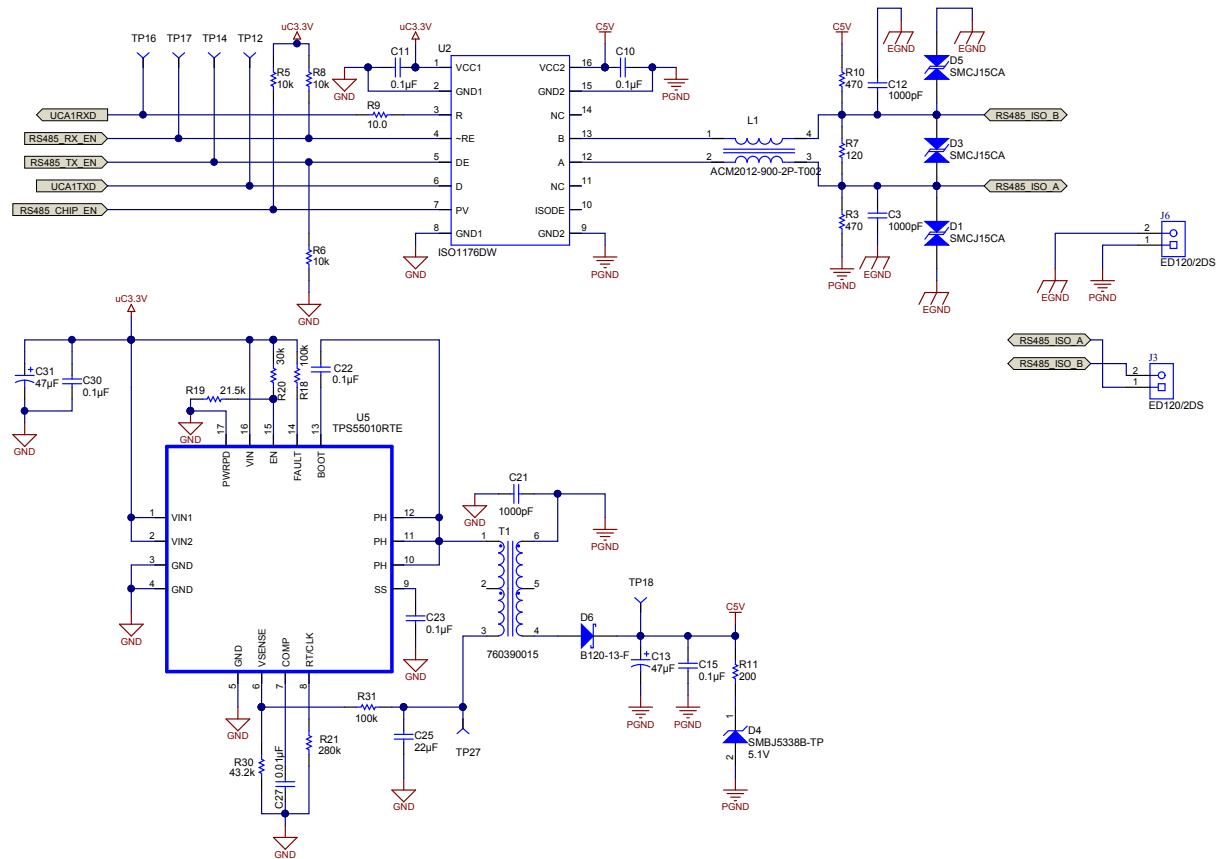
Number: TIDA-00191	Rev: E1	Designed for: Public Release	Mod. Date: 3/19/2014
SVN Rev: Not in version control	Assembly Variant: Variant name not interpreted	Project Title: AFE for Motor Electronic Overload Relays	Sheet Title:
Drawn By:	File: Pg2 Block Diagram.SchDoc	Size: B	Sheet 2 of 7
Engineer: Enter name of project lead	Contact: http://www.ti.com/support		http://www.ti.com
			© Texas Instruments 2014





Texas Instruments and/or its licensors do not warrant the accuracy or completeness of this specification or any information contained therein. Texas Instruments and/or its licensors do not warrant that this design will meet the specifications, will be suitable for your application or fit for any particular purpose, or will operate in an implementation. Texas Instruments and/or its licensors do not warrant that the design is production worthy. You should completely validate and test your design implementation to confirm the system functionality for your application.

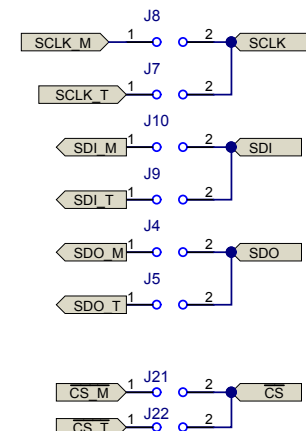
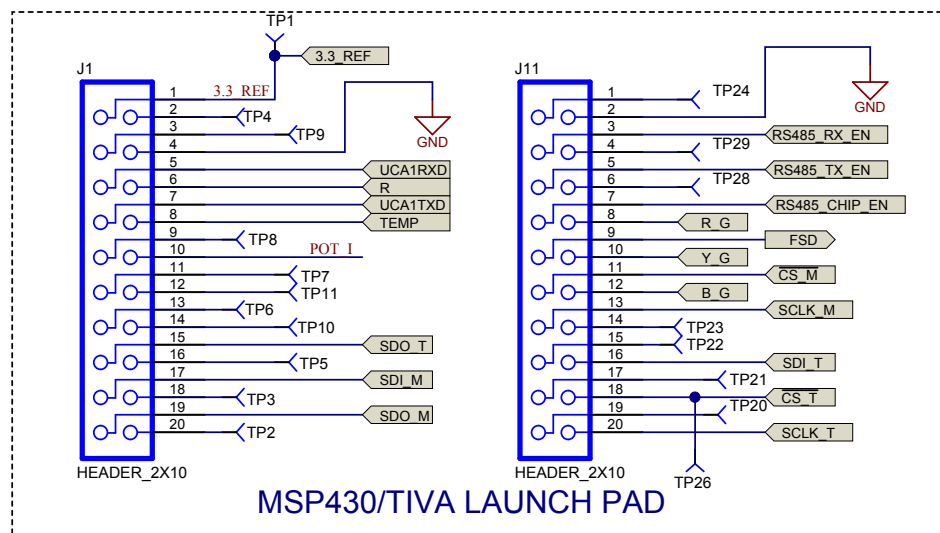
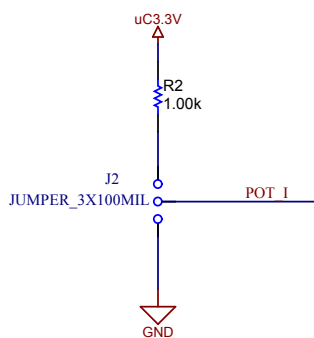




Texas Instruments and/or its licensors do not warrant the accuracy or completeness of this specification or any information contained therein. Texas Instruments and/or its licensors do not warrant that this design will meet the specifications, will be suitable for your application or fit for any particular purpose, or will operate in an implementation. Texas Instruments and/or its licensors do not warrant that the design is production worthy. You should completely validate and test your design implementation to confirm the system functionality for your application.

Designed for: Public Release		Mod. Date: 3/19/2014	
Project Title: AFE for Motor Electronic Overload Relays			
Number: TIDA-00191	Rev: E1	Sheet Title:	
SVN Rev: Not in version control	Assembly Variant: Variant name not interpreted		Sheet 5 of 7
Drawn By:	File: Pgs_SchDoc		Size: B
Engineer: Enter name of project lead	Contact: http://www.ti.com/support		http://www.ti.com
			© Texas Instruments 2014





Texas Instruments and/or its licensors do not warrant the accuracy or completeness of this specification or any information contained therein. Texas Instruments and/or its licensors do not warrant that this design will meet the specifications, will be suitable for your application or fit for any particular purpose, or will operate in an implementation. Texas Instruments and/or its licensors do not warrant that the design is production worthy. You should completely validate and test your design implementation to confirm the system functionality for your application.

Number: [TIDA-00191](#) | Rev: [E1](#)
 SVN Rev: Not in version control
 Drawn By:
 Engineer: [Enter name of project lead](#)

Designed for: [Public Release](#) | Mod. Date: 3/19/2014
 Project Title: [AFE for Motor Electronic Overload Relays](#)
 Sheet Title:
 Assembly Variant: [Variant name not interpreted](#) Sheet: 6 of 7
 File: [Pg6.SchDoc](#) | Size: A4
 Contact: <http://www.ti.com/support>

