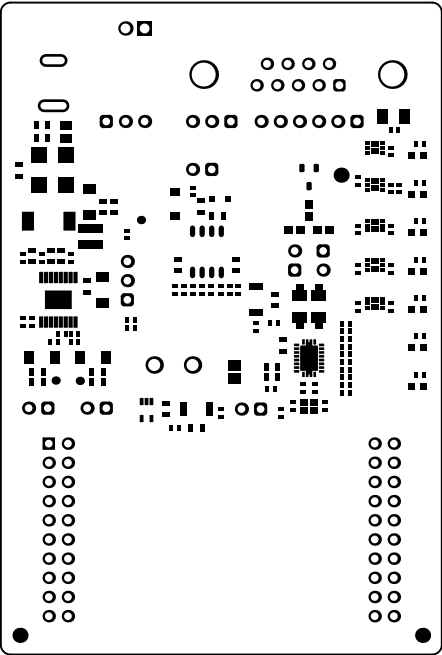
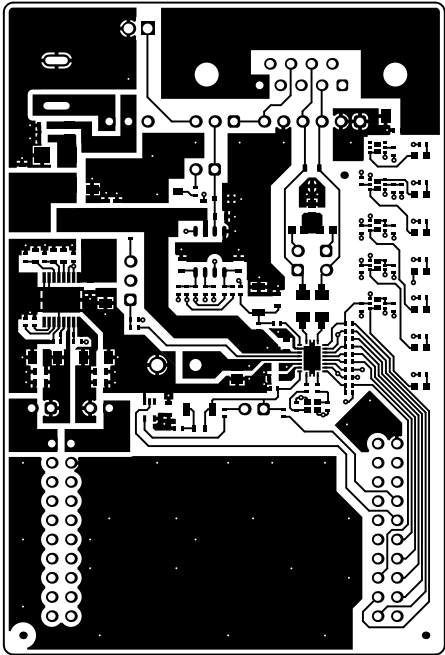


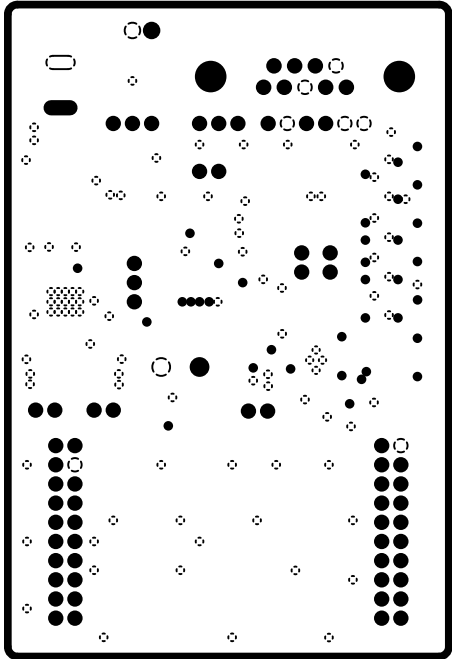
ALL ARTWORK VIEWED FROM TOP SIDE	BOARD #: INT107	REV: A	SUN REV: Not In VersionControl
LAYER NAME = Top Overlay	TID #: N/A		
PLOT NAME = Top Overlay	GENERATED : 5/20/2019 2:42:24 PM	TEXAS INSTRUMENTS	



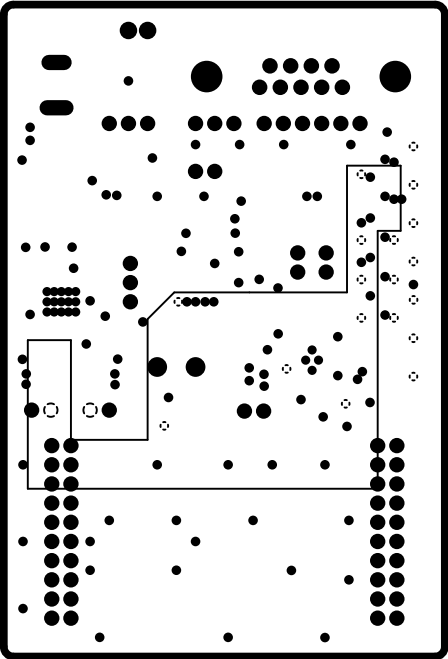
ALL ARTWORK VIEWED FROM TOP SIDE	BOARD #: INT107	REV: A	SUN REV: Not In VersionControl
LAYER NAME = Top Solder	TID #: N/A		
PLOT NAME = Top Solder Mask	GENERATED : 5/20/2019 2:42:25 PM	TEXAS INSTRUMENTS	



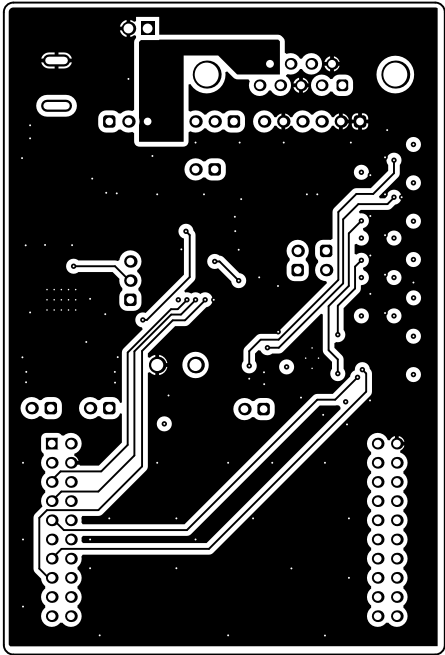
ALL ARTWORK VIEWED FROM TOP SIDE	BOARD #: INT107	REV: A	SUN REV: Not In VersionControl
LAYER NAME = Top Layer	TID #: N/A		
PLOT NAME = Top Layer	GENERATED : 5/20/2019 2:42:26 PM	TEXAS INSTRUMENTS	



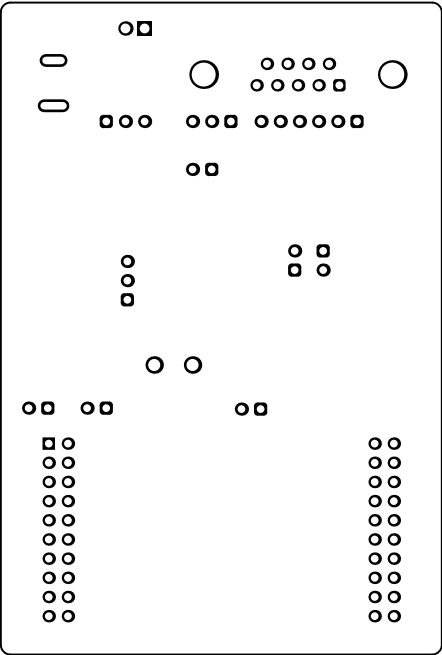
ALL ARTWORK VIEWED FROM TOP SIDE	BOARD #: INT107	REV: A	SUN REV: Not In VersionControl
LAYER NAME = Layer 2 GND	TID #: N/A		
PLOT NAME = Signal Layer 1	GENERATED : 5/20/2019 2:42:27 PM		TEXAS INSTRUMENTS



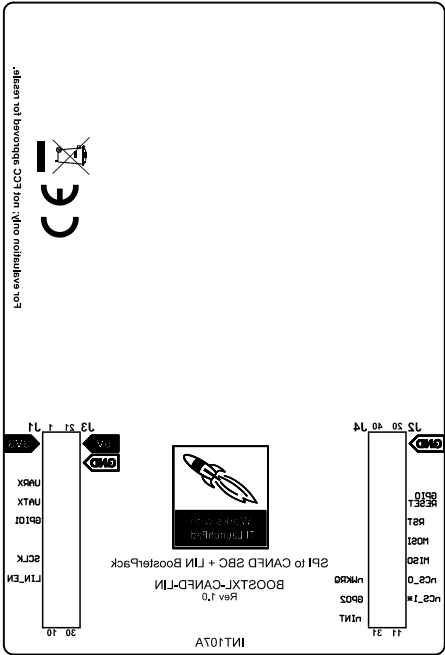
ALL ARTWORK VIEWED FROM TOP SIDE	BOARD #: INT107	REV: A	SUN REV: Not In VersionControl
LAYER NAME = Layer 3 PWR	TID #: N/A		
PLOT NAME = Signal Layer 2	GENERATED : 5/20/2019 2:42:28 PM		TEXAS INSTRUMENTS



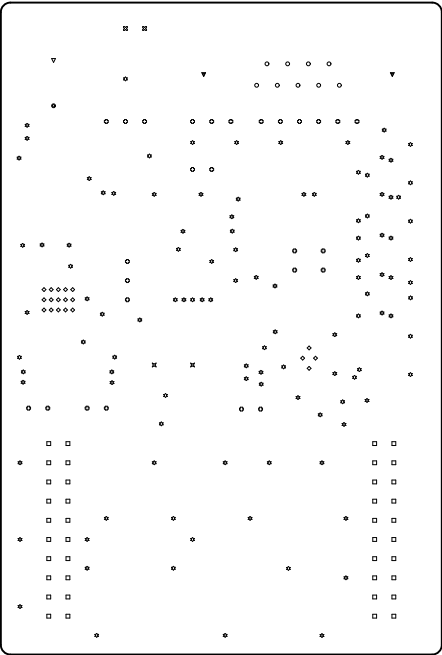
ALL ARTWORK VIEWED FROM TOP SIDE	BOARD #: INT107	REV: A	SUN REV: Not In VersionControl
LAYER NAME = Bottom Layer	TID #: N/A		
PLOT NAME = Bottom Layer	GENERATED : 5/20/2019 2:42:29 PM		TEXAS INSTRUMENTS



ALL ARTWORK VIEWED FROM TOP SIDE	BOARD #: INT107	REV: A	SUN REV: Not In VersionControl
LAYER NAME = Bottom Solder	TID #: N/A		
PLOT NAME = Bottom Solder Mask	GENERATED : 5/20/2019 2:42:30 PM	TEXAS INSTRUMENTS	



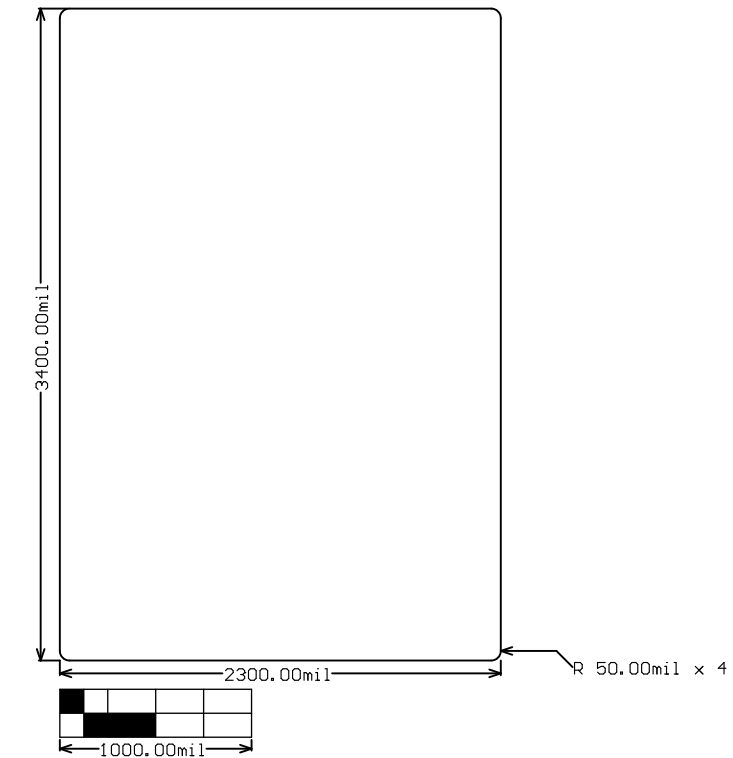
ALL ARTWORK VIEWED FROM TOP SIDE	BOARD #: INT107	REV: A	SUN REV: Not In VersionControl
LAYER NAME = Bottom Overlay	TID #: N/A		
PLOT NAME = Bottom Overlay	GENERATED : 5/20/2019 2:42:30 PM	TEXAS INSTRUMENTS	



Symbol	Quantity	Finished Hole Size	Plated	Hole Type	Drill Layer Pair	Hole Tolerance
◇	19	7.87mil (0.200mm)	PTH	Round	Top Layer - Bottom Layer	
⊛	114	10.00mil (0.254mm)	PTH	Round	Top Layer - Bottom Layer	
⊛	27	40.00mil (1.016mm)	PTH	Round	Top Layer - Bottom Layer	
□	40	40.16mil (1.020mm)	PTH	Round	Top Layer - Bottom Layer	
○	9	40.95mil (1.040mm)	PTH	Round	Top Layer - Bottom Layer	
⊗	2	51.18mil (1.300mm)	PTH	Round	Top Layer - Bottom Layer	
⊗	2	63.00mil (1.600mm)	PTH	Round	Top Layer - Bottom Layer	
▽	2	124.80mil (3.170mm)	PTH	Round	Top Layer - Bottom Layer	
▽	1	39.37mil (1.000mm)	PTH	Slot	Top Layer - Bottom Layer	
●	1	39.37mil (1.000mm)	PTH	Slot	Top Layer - Bottom Layer	
	217 Total					

Slot definitions : Routed Path Length = Calculated from tool start centre position to tool end centre position.
Hole Length = Routed Path Length + Tool Size = Slot length as defined in the PCB layout

ALL ARTWORK VIEWED FROM TOP SIDE	BOARD #: INT107	REV: A	SUN REV: Not In VersionControl
LAYER NAME = Drill Drawing	TID #: N/A		
PLOT NAME = Drill Drawing	GENERATED : 5/20/2019 2:42:31 PM	TEXAS INSTRUMENTS	



ALL ARTWORK VIEWED FROM TOP SIDE	BOARD #: INT107	REV: A	SUN REV: Not In VersionControl
LAYER NAME = M2 Board Dimensions	TID #: N/A		
PLOT NAME = Board Dimensions	GENERATED : 5/20/2019 2:42:33 PM	TEXAS INSTRUMENTS	