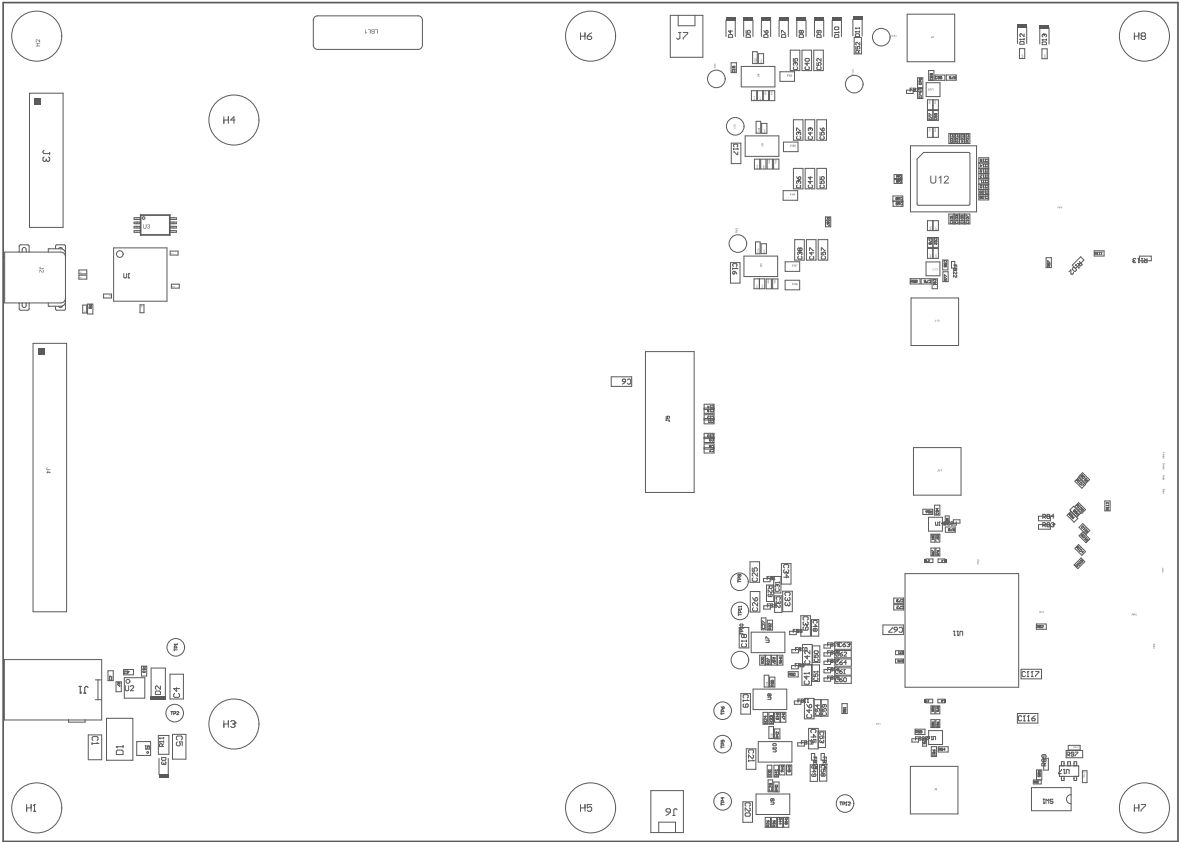


221 ■ These assemblies must comply with workmanship standards IPC-A-610 Class 2, unless otherwise specified.
■ These assemblies must be clean and free from flux and all contaminants. Use of no clean flux is not acceptable.
■
222 ■ Install label in silkscreened box after final wash. Text shall be 8 pt font. Text shall be per the Label Table in the PDF schematic.
■ Install label in silkscreened box after final wash. Text shall be 8 pt font. Text shall be per the Label Table in the PDF schematic.
224 ■ These assemblies must be clean and free from flux and all contaminants. Use of no clean flux is not acceptable.
225 ■ These assemblies must comply with workmanship standards IPC-A-610 Class 2, unless otherwise specified.
226 ■ These assemblies are ESD sensitive, ESD precautions shall be observed.



COMPONENTS MARKED "DNP" SHOULD NOT BE POPULATED.
ASSEMBLY URGENT: 002

PCB VIEWED FROM TOP SIDE	BOARD #: TIDA-010274	REV: B	SVN REV: Not in version control
PLOT NAME = Top Assembly Drawing	GENERATED : 4/17/2024 1:16:43 PM	TEXAS INSTRUMENTS	



PCB VIEWED FROM BOTTOM SIDE	BOARD #:	TIDA-010274	REV:	B	SVN REV:	Not in version control
PLOT NAME = Bottom Assembly Drawing	GENERATED :	4/17/2024	1:16:43 PM		TEXAS INSTRUMENTS	