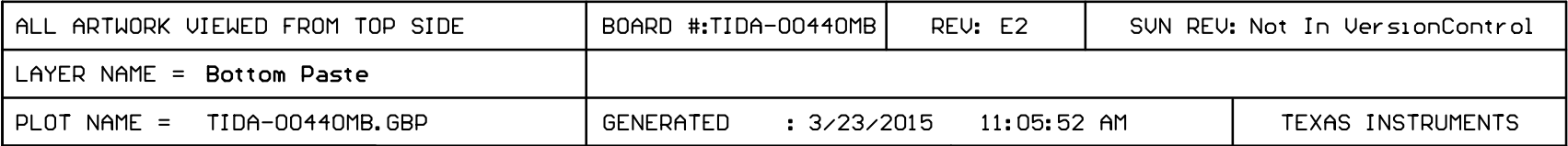
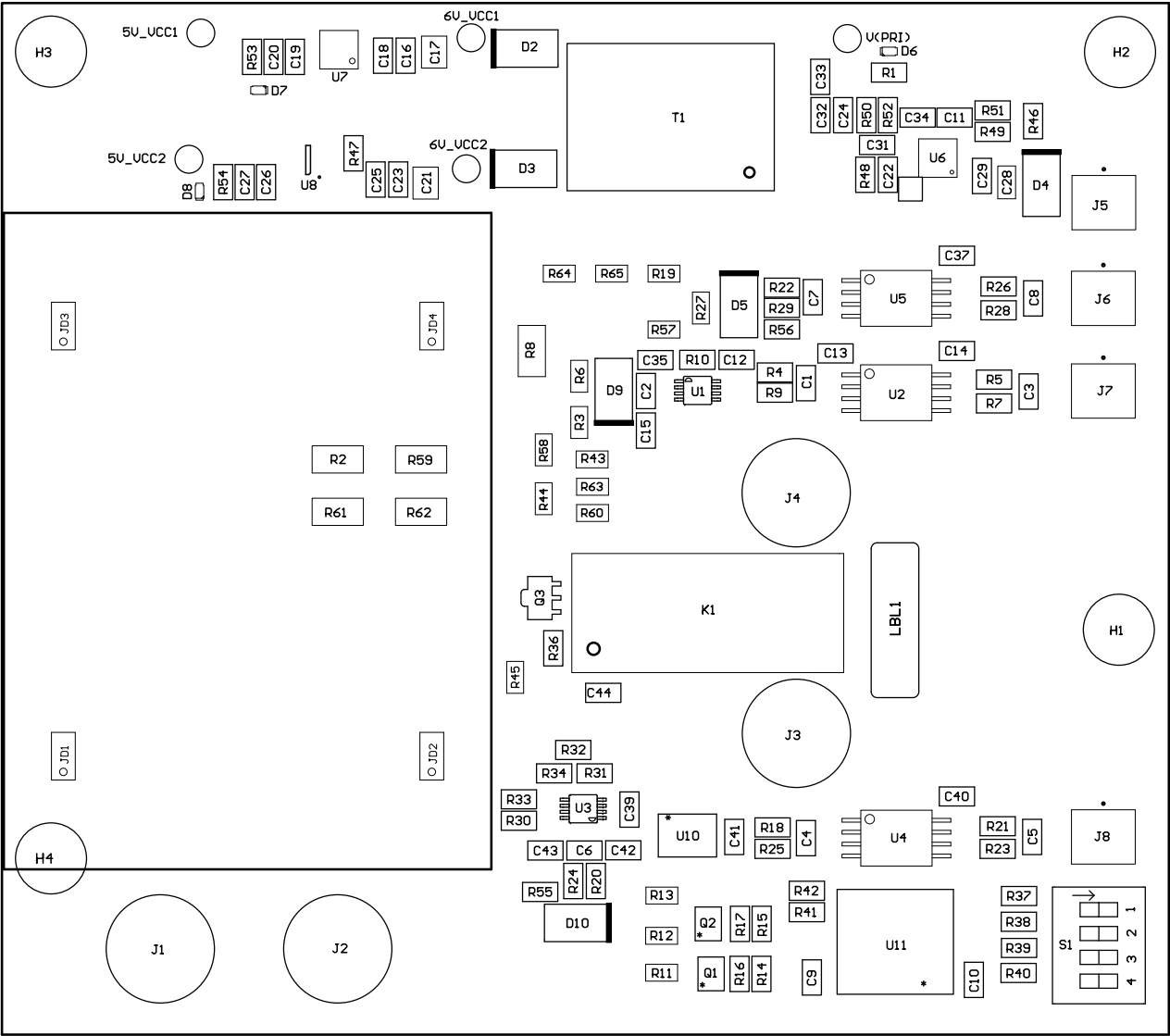


ALL ARTWORK VIEWED FROM TOP SIDE	BOARD #:TIDA-00440MB	REV: E2	SUN REV: Not In VersionControl
LAYER NAME = Top Paste			
PLOT NAME = TIDA-00440MB.GTP	GENERATED	: 3/23/2015 11:05:52 AM	TEXAS INSTRUMENTS



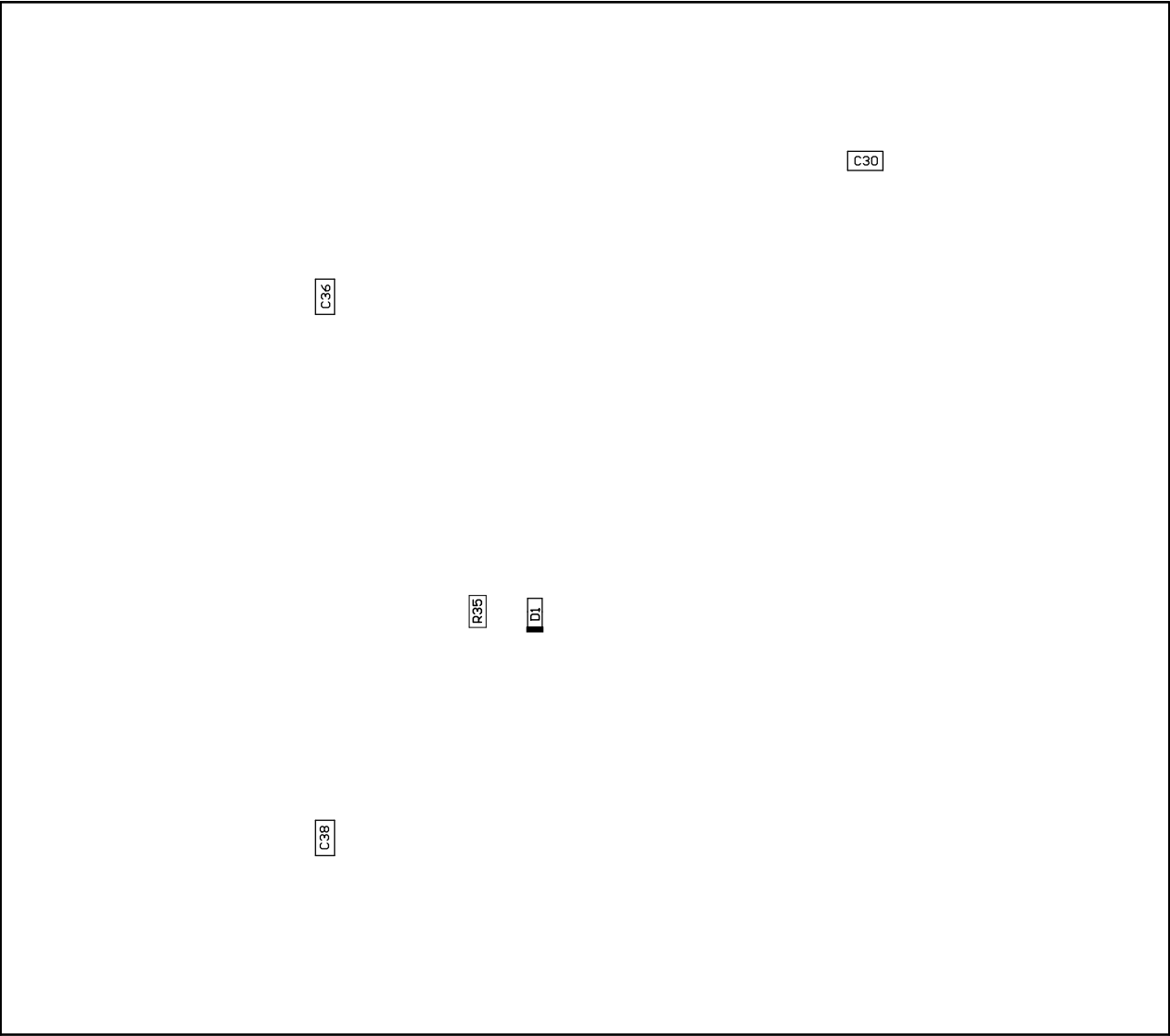
ALL ARTWORK VIEWED FROM TOP SIDE	BOARD #:TIDA-00440MB	REV: E2	SUN REV: Not In VersionControl
LAYER NAME = Bottom Paste			
PLOT NAME = TIDA-00440MB.GBP	GENERATED	: 3/23/2015 11:05:52 AM	TEXAS INSTRUMENTS

Z21 ■ Install label in silkscreened box after final wash. Text shall be 8 pt font. Text shall be per the Label Table in the PDF schematic.
Z22 ■ These assemblies are ESD sensitive, ESD precautions shall be observed.
Z23 ■ These assemblies must be clean and free from flux and all contaminants. Use of no clean flux is not acceptable.
Z24 ■ These assemblies must comply with workmanship standards IPC-A-610 Class 2, unless otherwise specified.



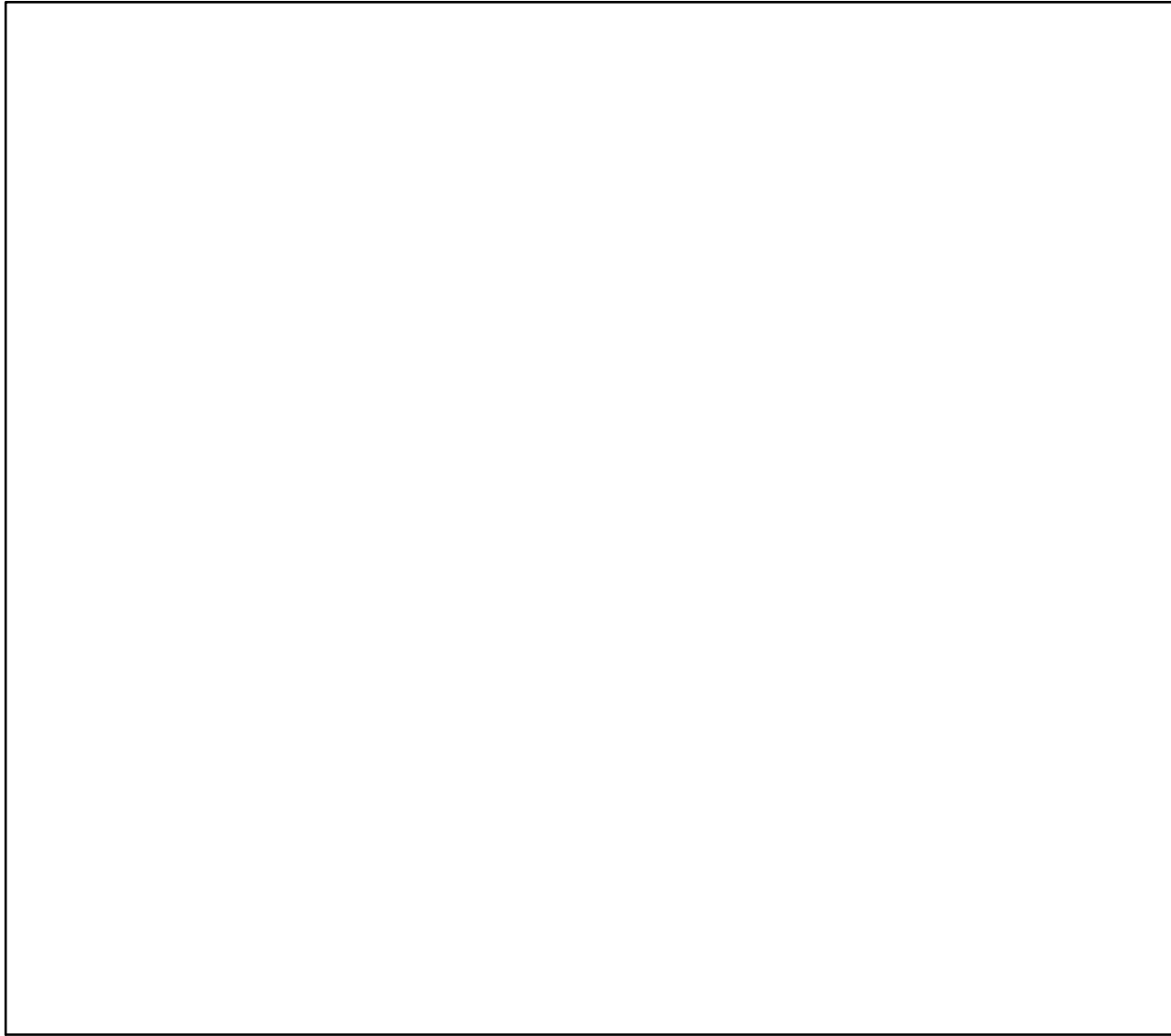
COMPONENTS MARKED 'DNP' SHOULD NOT BE POPULATED.
ASSEMBLY VARIANT: 001

PCB VIEWED FROM TOP SIDE	BOARD #: TIDA-00440MB	REV: E2	SUN REV: Not In VersionControl
IGNORE -> ASSEMBLY TOP			
PLOT NAME = TIDA-00440MB.GM5	GENERATED : 3/23/2015	11:50:55 AM	TEXAS INSTRUMENTS



COMPONENTS MARKED 'DNP' SHOULD NOT BE POPULATED.
ASSEMBLY VARIANT: 001

PCB VIEWED FROM BOTTOM SIDE	BOARD #:TIDA-00440MB	REV: E2	SUN REV: Not In VersionControl
	IGNORE -> ASSEMBLY BOTTOM		
PLOT NAME = TIDA-00440MB.GM6	GENERATED : 3/23/2015 11:50:55 AM		TEXAS INSTRUMENTS



ALL ARTWORK VIEWED FROM TOP SIDE	BOARD #:TIDA-00440MB	REV: E2	SUN REV: Not In VersionControl
LAYER NAME = M1 Board Outline			
PLOT NAME = TIDA-00440MB.GM1	GENERATED	: 3/23/2015 11:05:53 AM	TEXAS INSTRUMENTS