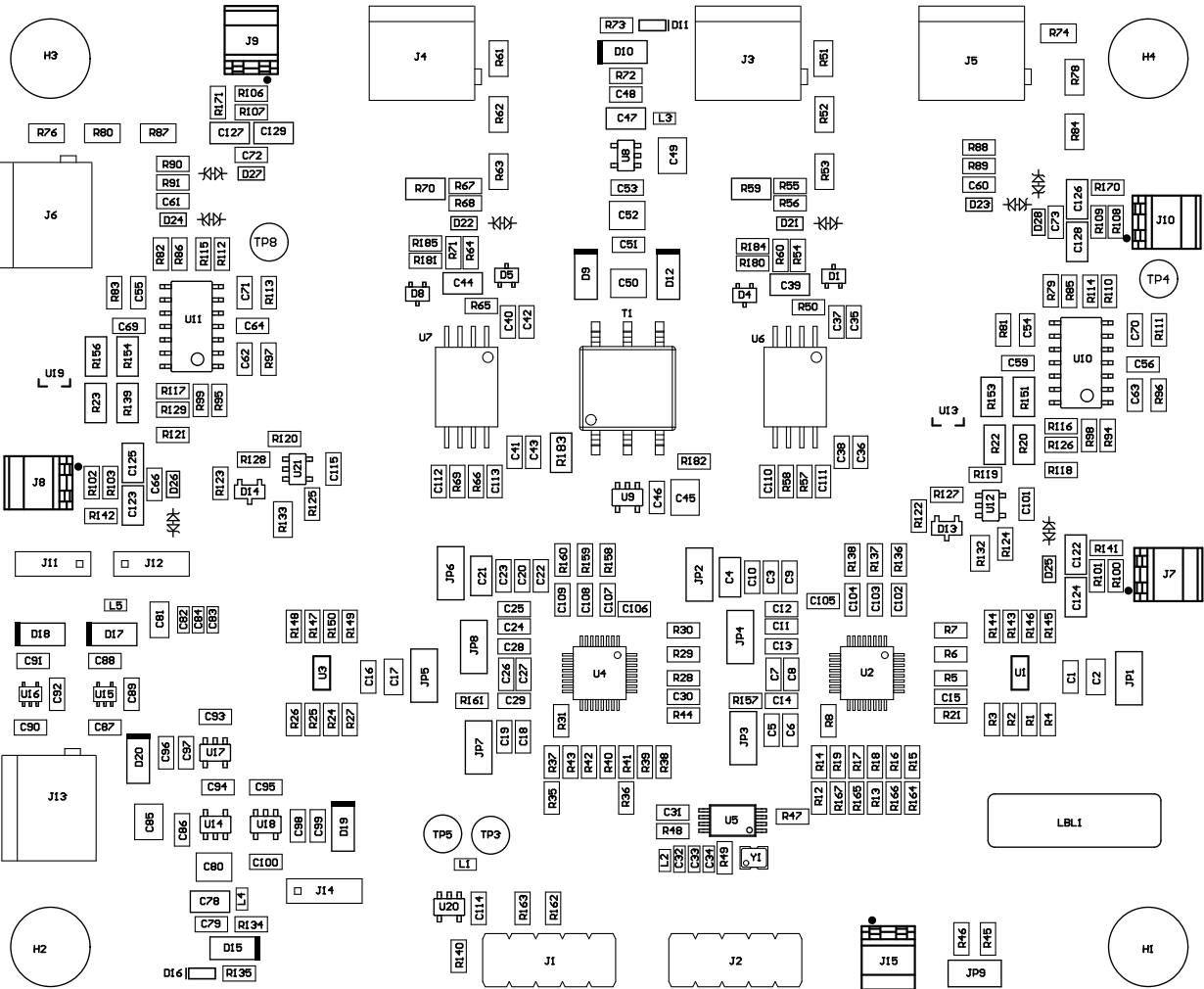


ALL ARTWORK VIEWED FROM TOP SIDE	BOARD #: TIDA-00810	REV: E2	SUN REV: Not In VersionControl
LAYER NAME = Top Paste			
PLOT NAME = Top Paste	GENERATED : 7/5/2016 12:00:12 PM	TEXAS INSTRUMENTS	

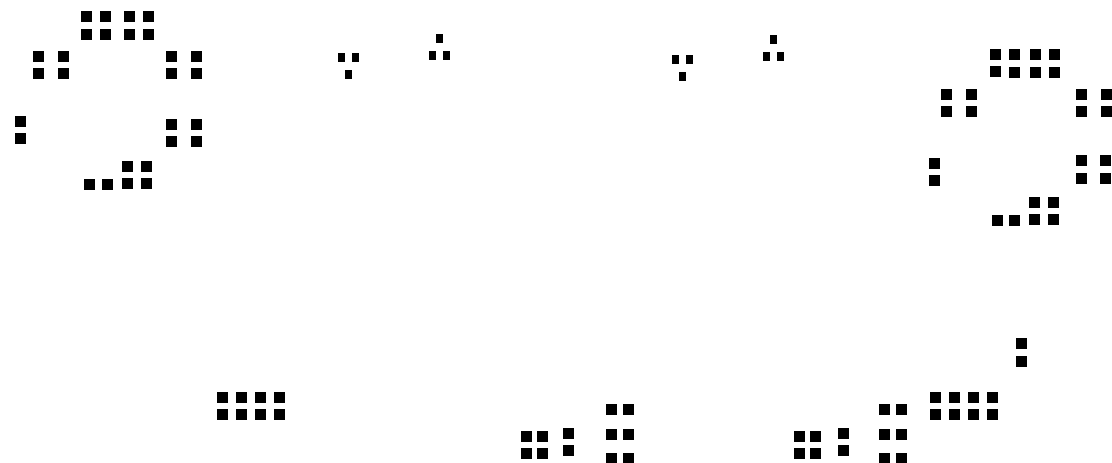
- Z21 ■ Install label in silkscreened box after final wash. Text shall be 8 pt font. Text shall be per the Label Table in the PDF schematic.
- Z22 ■ These assemblies are ESD sensitive, ESD precautions shall be observed.
- Z23 ■ These assemblies must be clean and free from flux and all contaminants. Use of no clean flux is not acceptable.
- Z24 ■ These assemblies must comply with workmanship standards IPC-A-610 Class 2, unless otherwise specified.



ASSEMBLY VARIANT:

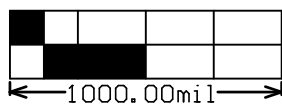
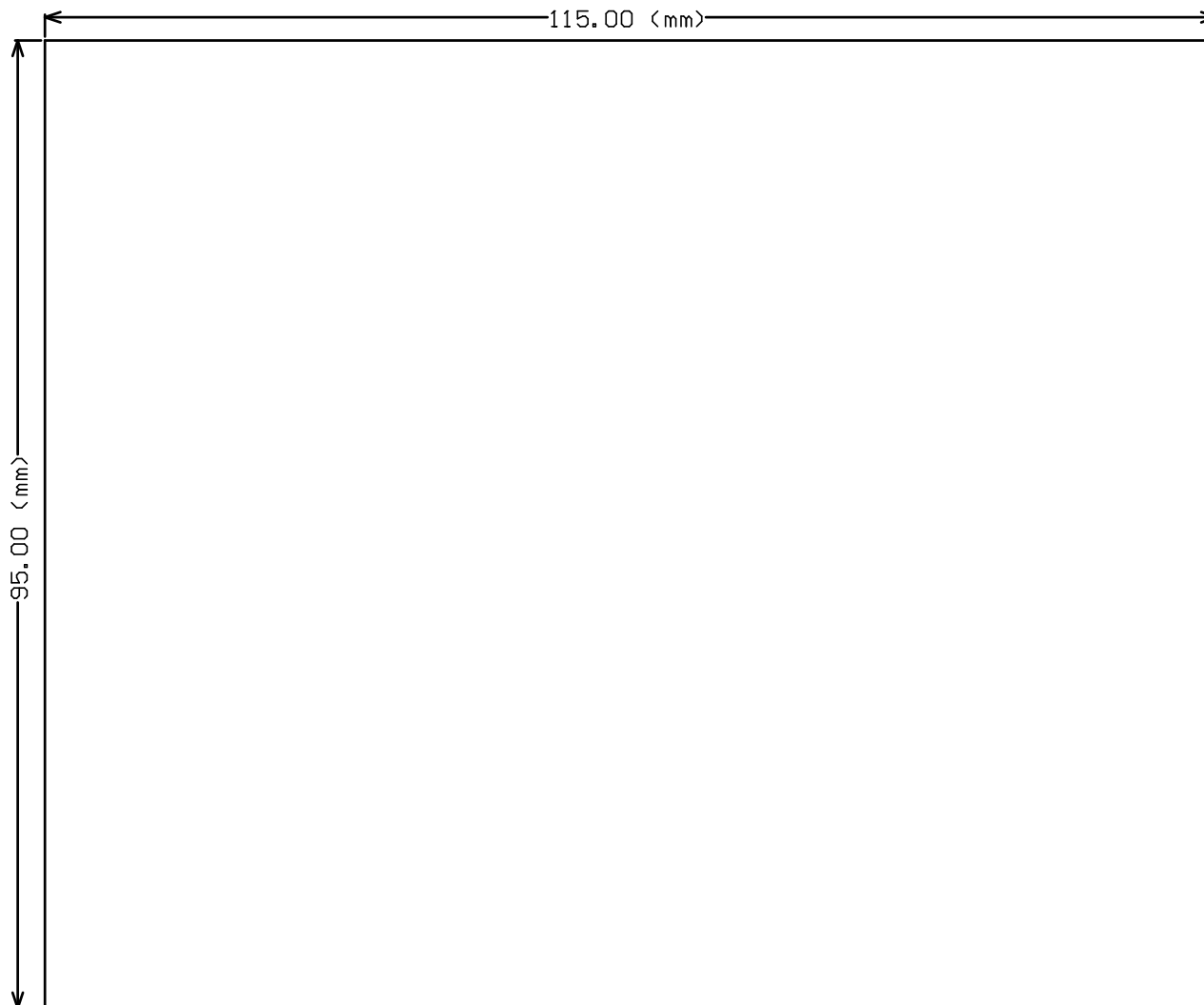
[No Variations]

PCB VIEWED FROM TOP SIDE	BOARD #:	TIDA-00810	REV:	E2	SUN REV:	Not In VersionControl
LAYER NAME =	M5 Assembly Top					IGNORE ->
PLOT NAME =	Top Assembly Drawing					GENERATED : 7/5/2016 12:00:13 PM TEXAS INSTRUMENTS



ALL ARTWORK VIEWED FROM TOP SIDE	BOARD #: TIDA-00810	REV: E2	SUN REV: Not In VersionControl
LAYER NAME = Bottom Paste			
PLOT NAME = Bottom Paste	GENERATED : 7/5/2016 12:00:14 PM	TEXAS INSTRUMENTS	

PCB VIEWED FROM BOTTOM SIDE	BOARD #:	TIDA-00810	REV:	E2	SUN REV:	Not In VersionControl
LAYER NAME = M6 Assembly bottom	IGNORE ->					
PLOT NAME = Bottom Assembly Drawing	GENERATED :	7/5/2016	12:00:16 PM	TEXAS INSTRUMENTS		



ALL ARTWORK VIEWED FROM TOP SIDE	BOARD #: TIDA-00810	REV: E2	SUN REV: Not In VersionControl
LAYER NAME = M1 Board Outline			
PLOT NAME = Board Outline	GENERATED : 7/5/2016 12:00:17 PM	TEXAS INSTRUMENTS	