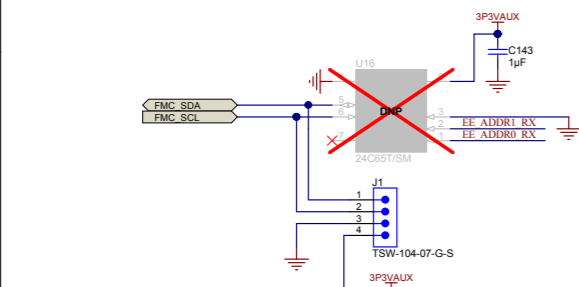
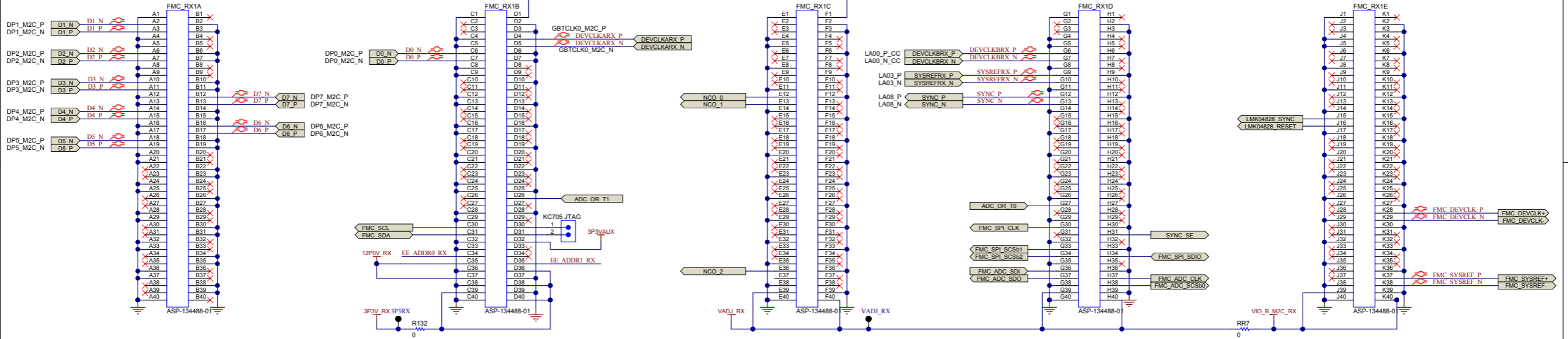
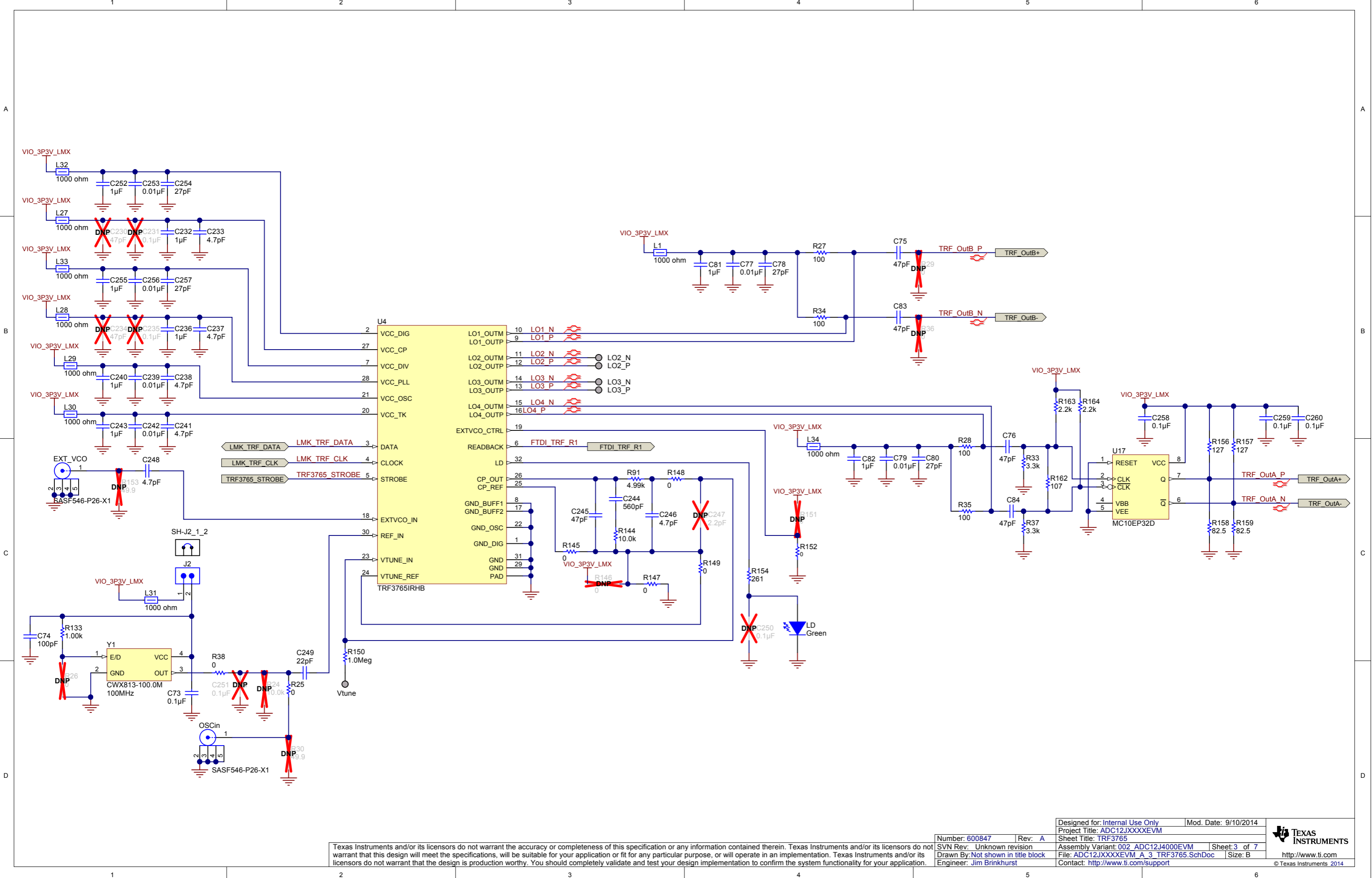


The D<7.0> connections polarity have been swapped from the T1 standard FMC ADC guidelines to ease routing. This is accounted for in the FPGA code.

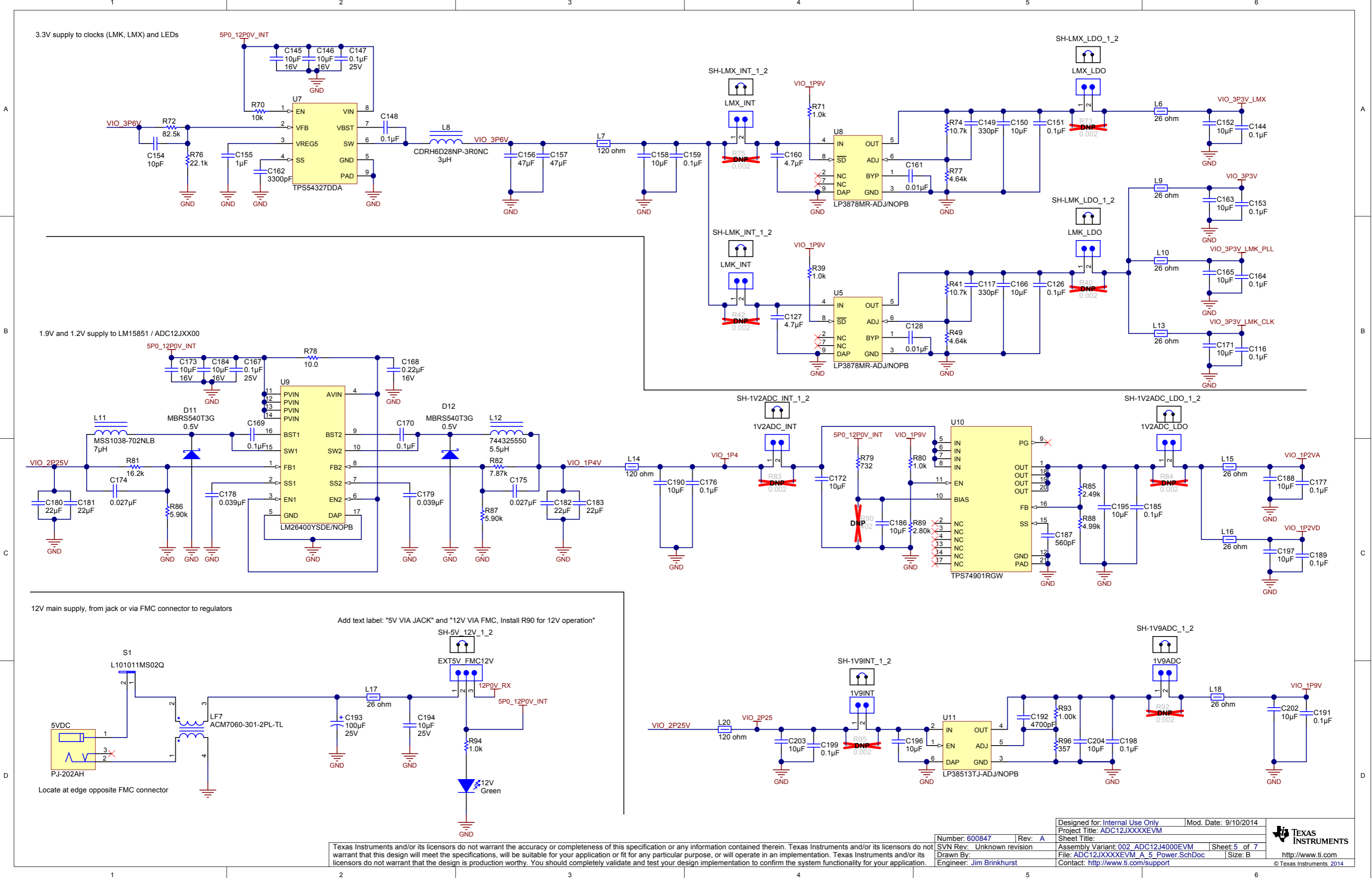




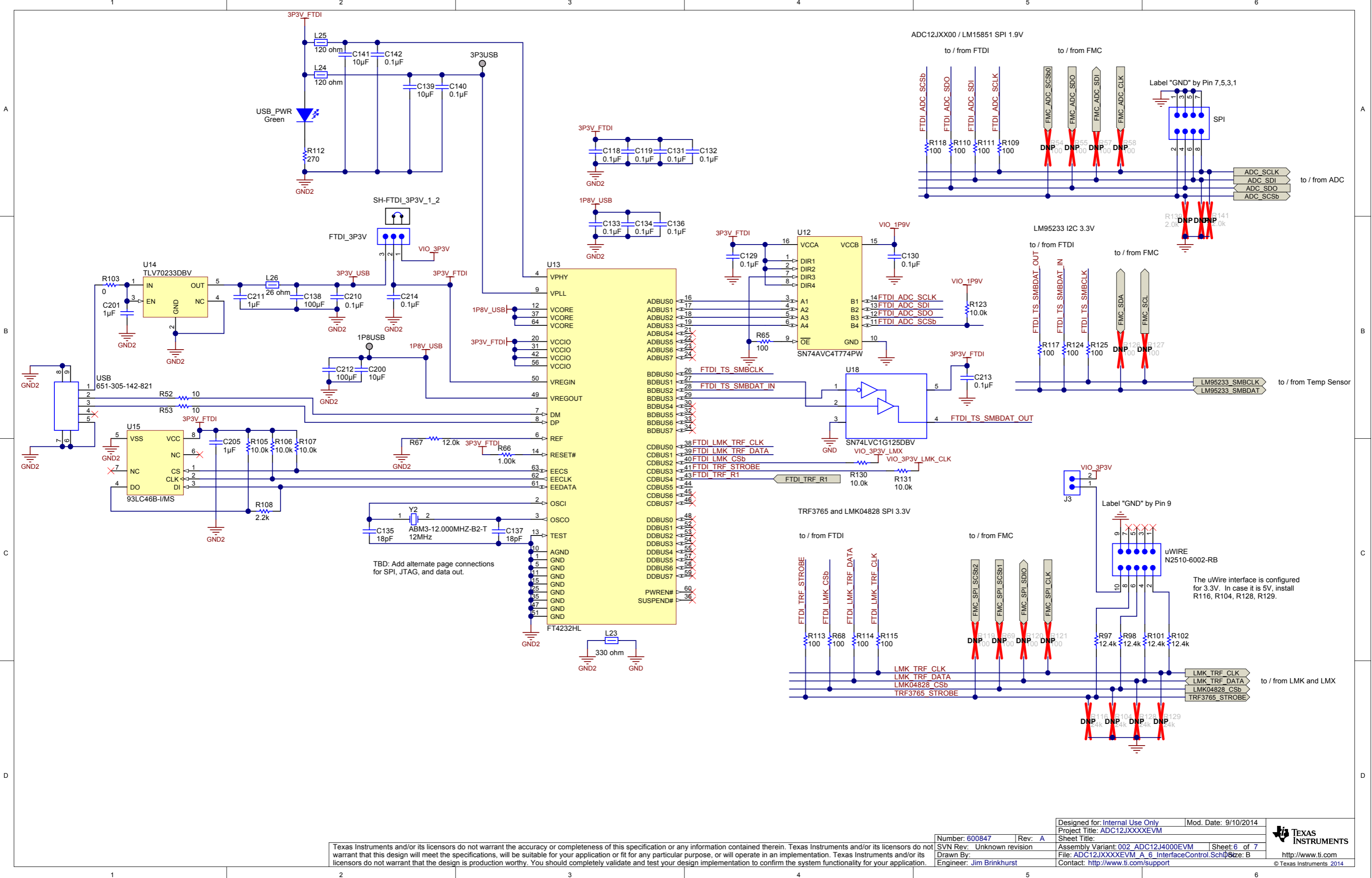
Texas Instruments and/or its licensors do not warrant the accuracy or completeness of this specification or any information contained therein. Texas Instruments and/or its licensors do not warrant that this design will meet the specifications, will be suitable for your application or fit for any particular purpose, or will operate in an implementation. Texas Instruments and/or its licensors do not warrant that the design is production worthy. You should completely validate and test your design implementation to confirm the system functionality for your application.







Texas Instruments and/or its licensors do not warrant the accuracy or completeness of this specification or any information contained therein. Texas Instruments and/or its licensors do not warrant that this design will meet the specifications, will be suitable for your application or fit for any particular purpose, or will operate in an implementation. Texas Instruments and/or its licensors do not warrant that the design is production worthy. You should completely validate and test your design implementation to confirm the system functionality for your application.



PCB  
LOGO  
Texas Instruments

H12  
MECH  
FMC - FMC Nut

Place at least two of the GND test points in the power section.

ZZ1  
Label Assembly Note  
This Assembly Note is for PCB labels only

ZZ2

**Assembly Note**

These assemblies are ESD sensitive, ESD precautions shall be observed.

ZZ3

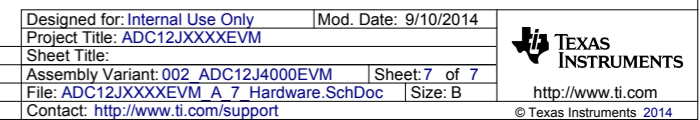
Assembly Note
---------------

These assemblies must be clean and free from flux and all contaminants. Use of no clean flux is not acceptable.

**ZZ4**

**Assembly Note**

These assemblies must comply with workmanship standards IPC-A-610 Class 2., unless otherwise specified.



Texas Instruments and/or its licensors do not warrant the accuracy or completeness of this specification or any information contained therein. Texas Instruments and/or its licensors do not warrant that this design will meet the specifications, will be suitable for your application or fit for any particular purpose, or will operate in an implementation. Texas Instruments and/or its licensors do not warrant that the design is production worthy. You should completely validate and test your design implementation to confirm the system functionality for your application.