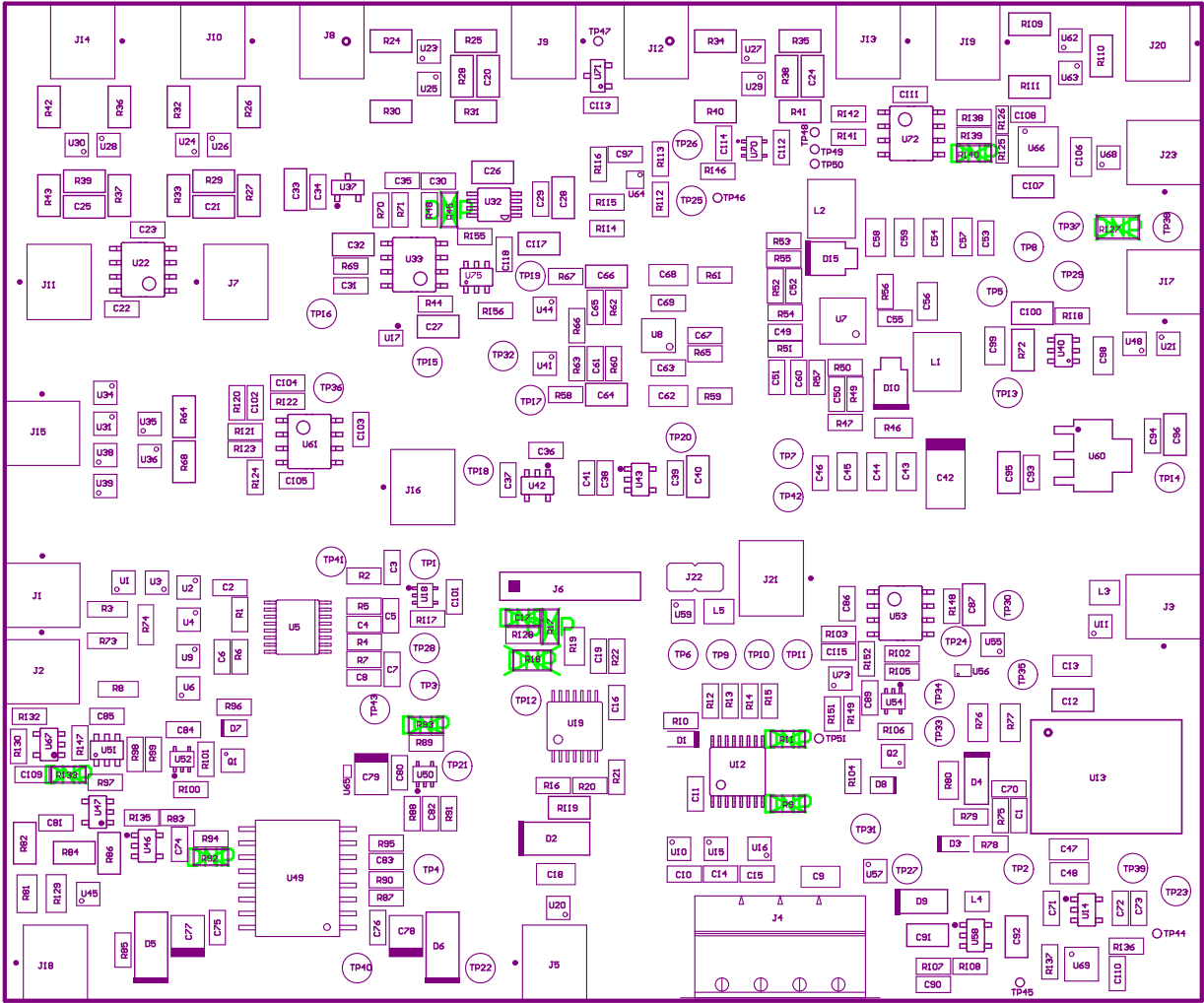
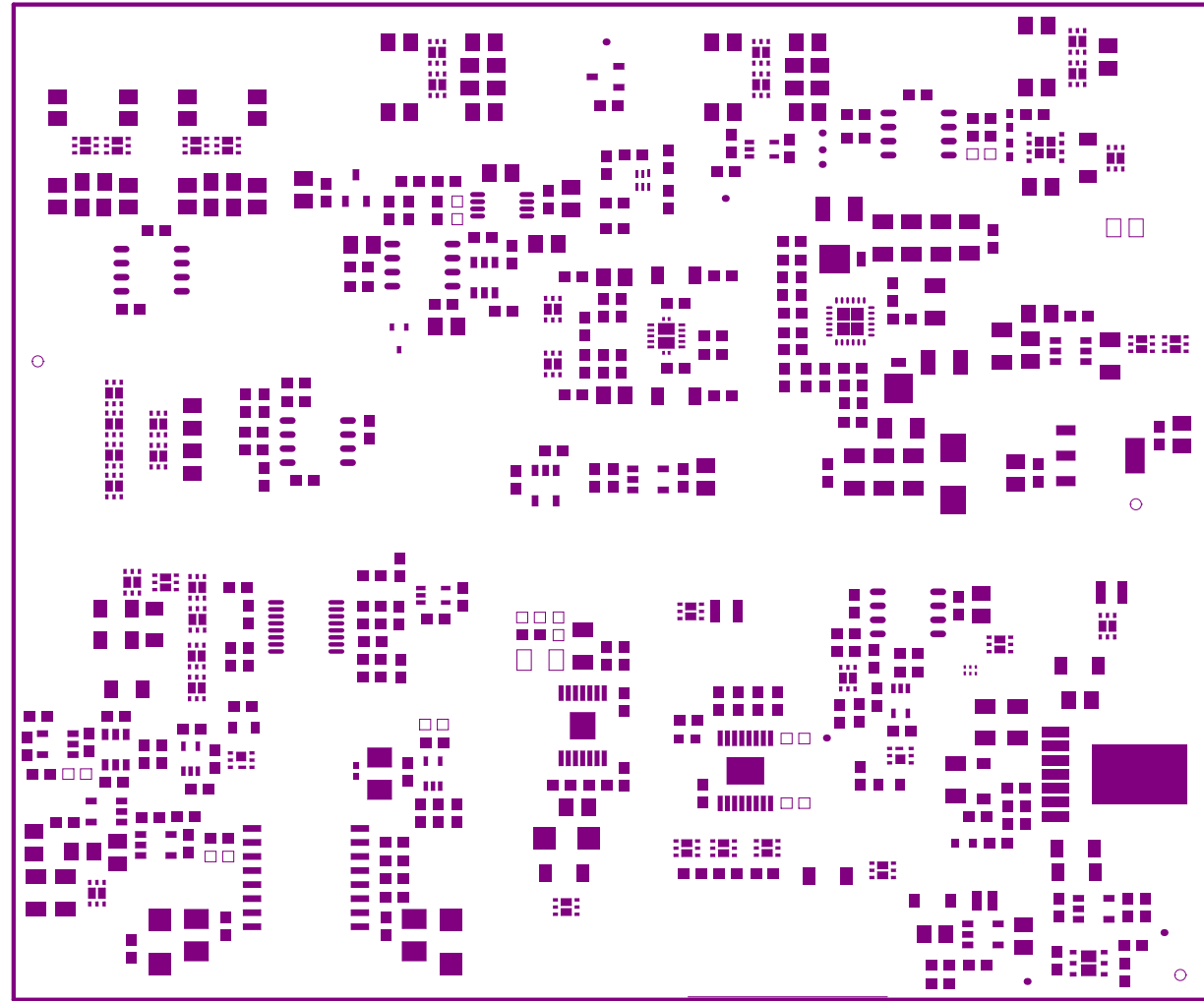
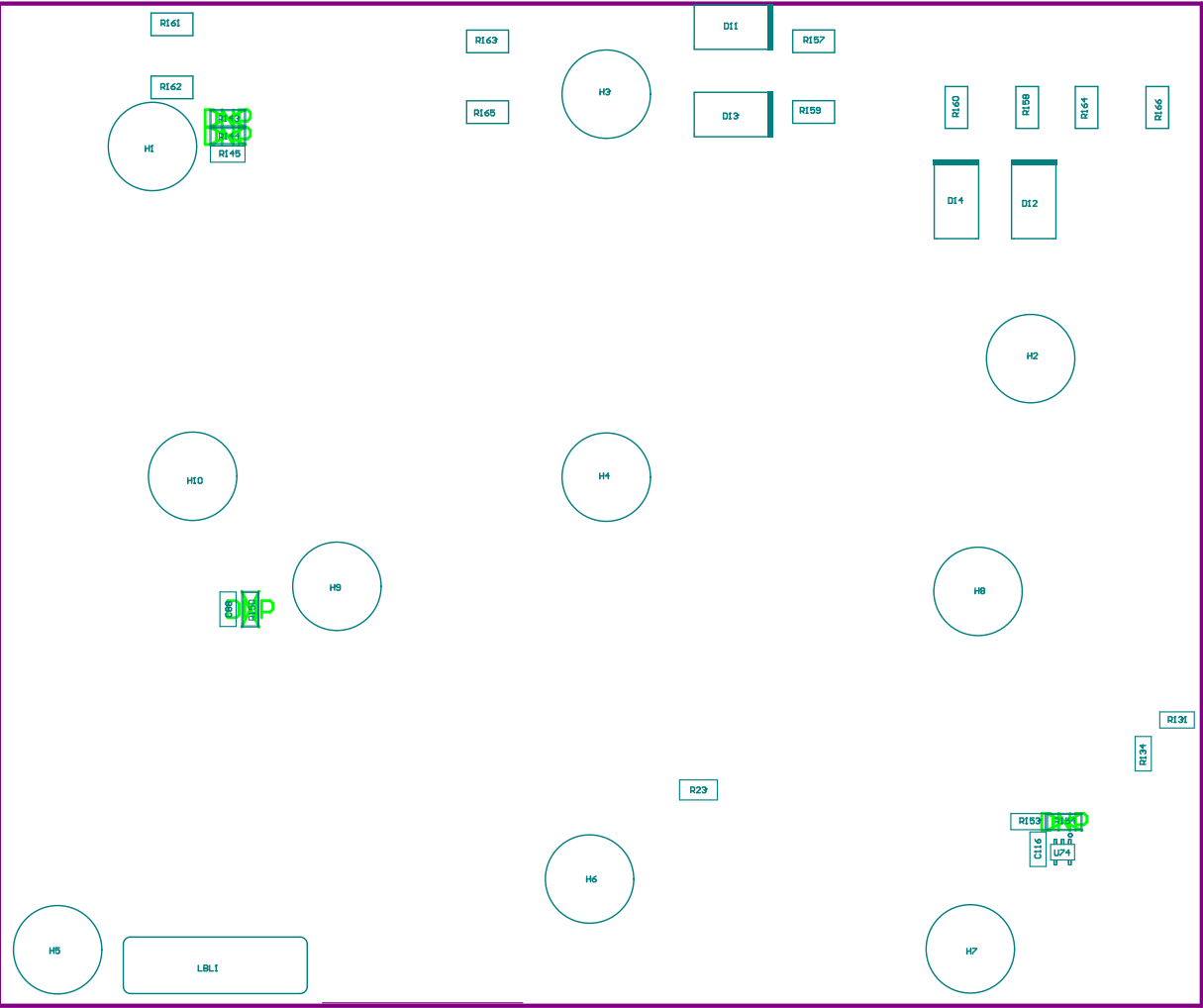


- ZZ1 ■ Install label in silkscreened box after final wash. Text shall be 8 pt font. Text shall be per the Label Table in the PDF schematic.
- ZZ2 ■ These assemblies are ESD sensitive, ESD precautions shall be observed.
- ZZ3 ■ These assemblies must be clean and free from flux and all contaminants. Use of no clean flux is not acceptable.
- ZZ4 ■ These assemblies must comply with workmanship standards IPC-A-610 Class 2, unless otherwise specified.





Top Paste



COMPONENTS MARKED 'DNP' SHOULD NOT BE POPULATED.

ASSEMBLY VARIANT: 001

|   |   |            |                                   |
|---|---|------------|-----------------------------------|
| PCB VIEWED FROM BOTTOM SIDE                 | BOARD #:<br>TIDA-010008_10-Power+Protection | REV:<br>E2 | SUN REV:<br>Not In VersionControl |
| LAYER NAME =<br>M6 Assembly Bottom          | TID #:<br>010008                            |            |                                   |
| PLOT NAME =<br>Bottom LayerAssembly Drawing | GENERATED :<br>4/29/2019                    | 2:39:23 PM | TEXAS INSTRUMENTS                 |

