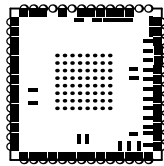
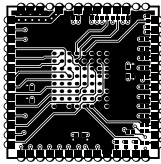


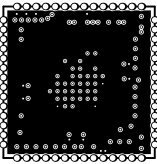
| | | | |
|----------------------------------|----------------------------------|-----------|--|
| ALL ARTWORK VIEWED FROM TOP SIDE | BOARD #: PROC148_NOR | FLAVOR: A | SUN REV: b1cc1e417ad80a14f3cd317bb35322d20932ddc0 [Locally Modified] |
| LAYER NAME = Top Overlay | TID #: N/A | | |
| PLOT NAME = Top Overlay | GENERATED : 3/13/2023 4:06:48 PM | | TEXAS INSTRUMENTS |



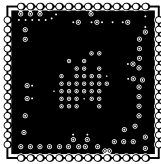
| | | | |
|----------------------------------|----------------------------------|-----------|--|
| ALL ARTWORK VIEWED FROM TOP SIDE | BOARD #: PROC148_NOR | FLAVOR: A | SUN REV: b1cc1e417ad80a14f3cd317bb35322d20932ddc0 [Locally Modified] |
| LAYER NAME = Top Solder | TID #: N/A | | |
| PLOT NAME = Top Solder Mask | GENERATED : 3/13/2023 4:06:48 PM | | TEXAS INSTRUMENTS |



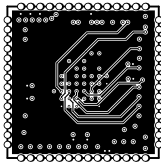
| | | | |
|----------------------------------|----------------------------------|--------|--|
| ALL ARTWORK VIEWED FROM TOP SIDE | BOARD #: PROC148_NORFLASH | REV: A | SUN REV: b1cc1e417ad80a14f3cd317eb35322d20932ddc0 [Locally Modified] |
| LAYER NAME = Top Layer | TID #: N/A | | |
| PLOT NAME = Top Layer | GENERATED : 3/13/2023 4:06:49 PM | | TEXAS INSTRUMENTS |



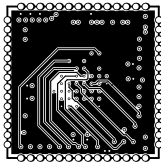
| | | | |
|----------------------------------|----------------------------------|--------|--|
| ALL ARTWORK VIEWED FROM TOP SIDE | BOARD #: PROC148_NORFLASH | REV: A | SUN REV: b1cc1e417ad80a14f3cd317bb35322d20932ddc0 [Locally Modified] |
| LAYER NAME = | TID #: N/A | | |
| PLOT NAME = Signal Layer 1 | GENERATED : 3/13/2023 4:06:49 PM | | TEXAS INSTRUMENTS |



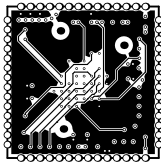
| | | | |
|----------------------------------|----------------------------------|-----------|--|
| ALL ARTWORK VIEWED FROM TOP SIDE | BOARD #: PROC148_NOR | FLAVOR: A | SUN REV: b1cc1e417ad80a14f3cd317bb35322d20932ddc0 [Locally Modified] |
| LAYER NAME = | TID #: N/A | | |
| PLOT NAME = Signal Layer 2 | GENERATED : 3/13/2023 4:06:50 PM | | TEXAS INSTRUMENTS |



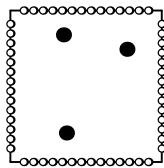
| | | | |
|----------------------------------|----------------------------------|-------------------|--|
| ALL ARTWORK VIEWED FROM TOP SIDE | BOARD #: PROC148_NORFLASH | REV: A | SUN REV: b1cc1e417ad80a14f3cd317cb35322d20932ddc0 [Locally Modified] |
| LAYER NAME = | TID #: N/A | | |
| PLOT NAME = Signal Layer 3 | GENERATED : 3/13/2023 4:06:50 PM | TEXAS INSTRUMENTS | |



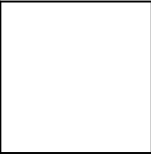
| | | | |
|----------------------------------|----------------------------------|-----------|--|
| ALL ARTWORK VIEWED FROM TOP SIDE | BOARD #: PROC148_NOR | FLAVOR: A | SUN REV: b1cc1e417ad80a14f3cd317bb35322d20932ddc0 [Locally Modified] |
| LAYER NAME = | TID #: N/A | | |
| PLOT NAME = Signal Layer 4 | GENERATED : 3/13/2023 4:06:50 PM | | TEXAS INSTRUMENTS |



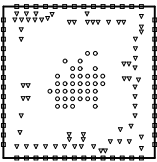
| | | | |
|----------------------------------|----------------------------------|-----------|--|
| ALL ARTWORK VIEWED FROM TOP SIDE | BOARD #: PROC148_NOR | FLAVOR: A | SUN REV: b1cc1e417ad80a14f3cd317cb35322d20932ddc0 [Locally Modified] |
| LAYER NAME = Bottom Layer | TID #: N/A | | |
| PLOT NAME = Bottom Layer | GENERATED : 3/13/2023 4:06:51 PM | | TEXAS INSTRUMENTS |



| | | | |
|----------------------------------|----------------------------------|-----------|--|
| ALL ARTWORK VIEWED FROM TOP SIDE | BOARD #: PROC148_NOR | FLAVOR: A | SUN REV: b1cc1e417ad80a14f3cd317bb35322d20932ddc0 [Locally Modified] |
| LAYER NAME = Bottom Solder | TID #: N/A | | |
| PLOT NAME = Bottom Solder Mask | GENERATED : 3/13/2023 4:06:51 PM | | TEXAS INSTRUMENTS |

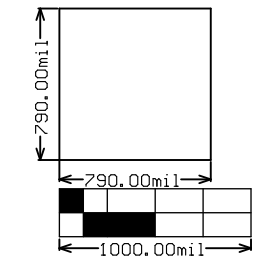


| | | | |
|----------------------------------|----------------------------------|-----------|--|
| ALL ARTWORK VIEWED FROM TOP SIDE | BOARD #: PROC148_NOR | FLAVOR: A | SUN REV: b1cc1e417ad80a14f3cd317bb35322d20932ddc0 [Locally Modified] |
| LAYER NAME = Bottom Overlay | TID #: N/A | | |
| PLOT NAME = Bottom Overlay | GENERATED : 3/13/2023 4:06:52 PM | | TEXAS INSTRUMENTS |



| Symbol | Quantity | Finished Hole Size | Plated | Hole Type | Drill Layer Pair | Hole Tolerance |
|--------|-----------|--------------------|--------|-----------|--------------------------|----------------|
| ○ | 37 | 7.87mil (0.200mm) | PTH | Round | Top Layer - Bottom Layer | |
| ▽ | 65 | 10.00mil (0.254mm) | PTH | Round | Top Layer - Bottom Layer | |
| □ | 56 | 30.00mil (0.762mm) | PTH | Round | Top Layer - Bottom Layer | |
| | 158 Total | | | | | |

| | | | |
|----------------------------------|----------------------------------|-----------|--|
| ALL ARTWORK VIEWED FROM TOP SIDE | BOARD #: PROC148_NOR | FLAVOR: A | SUN REV: b1cc1e417ad80a14f3cd317cb35322d20932ddc0 [Locally Modified] |
| LAYER NAME = Drill Drawing | TID #: N/A | | |
| PLOT NAME = Drill Drawing | GENERATED : 3/13/2023 4:06:52 PM | | TEXAS INSTRUMENTS |



| | | | |
|----------------------------------|----------------------------------|-----------|--|
| ALL ARTWORK VIEWED FROM TOP SIDE | BOARD #: PROC148_NOR | FLAVOR: A | SUN REV: b1cc1e417ad80a14f3cd317bb35322d20932ddc0 [Locally Modified] |
| LAYER NAME = M2 Board Dimensions | TID #: N/A | | |
| PLOT NAME = Board Dimensions | GENERATED : 3/13/2023 4:06:53 PM | | TEXAS INSTRUMENTS |